



# Wisconsin Department of Transportation

## Division of Transportation Systems Development

Bureau of Project Development  
4822 Madison Yards Way, 4<sup>th</sup> Floor South  
Madison, WI 53705

August 3, 2023

Telephone: (608) 266-1631  
Facsimile (FAX): (608) 266-8459

### NOTICE TO ALL CONTRACTORS:

**Proposal #08: 1146-75-73, WISC 2023581**  
**STH 76 – New London**  
**CTH T/Givens Road – USH 45**  
**STH 15**  
**Outagamie County**

### Letting of August 8, 2023

This is Addendum No. 03, which provides for the following:

#### Schedule of Items:

Revised Bid Item Quantities					
Bid Item	Item Description	Unit	Proposal Total Prior to Addendum	Proposal Quantity Change (-)	Proposal Total After Addendum
653.0105	Pull Boxes Steel 12x24-Inch	EACH	11	-6	5
653.0140	Pull Boxes Steel 24x42-Inch	EACH	13	6	19

#### Plan Sheets:

Revised Plan Sheets	
Plan Sheet	Plan Sheet Title (brief description of changes to sheet)
142	Traffic Control Signal – S68-0859 (Reduced number of Pull Boxes Steel 12x24-Inch and increased number of Pull Boxes Steel 24x42-Inch)
143	Traffic Control Signal – S68-0859 (Reduced number of Pull Boxes Steel 12x24-Inch and increased number of Pull Boxes Steel 24x42-Inch)
251	Miscellaneous Quantities (Reduced number of Pull Boxes Steel 12x24-Inch and increased number of Pull Boxes Steel 24x42-Inch)

**Schedule of Items**

Attached, dated August 3, 2023, are the revised Schedule of Items Page 16.

**Plan Sheets**

The following 8½ x 11-inch sheets are attached and made part of the plans for this proposal:

Revised: 142, 143, and 251

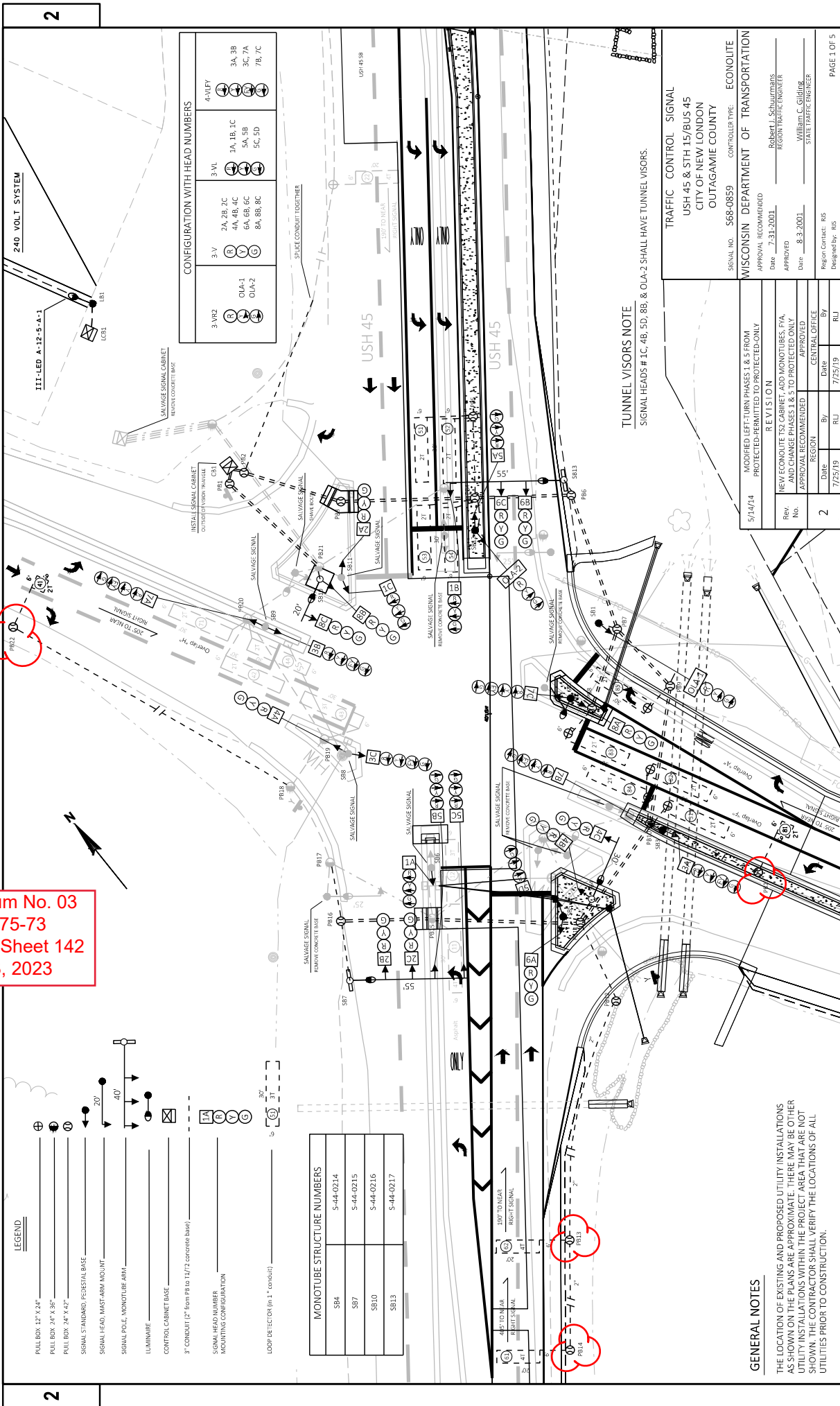
The responsibility for notifying potential subcontractors and suppliers of these changes remains with the prime contractor.

Sincerely,

*Mike Coleman*

Proposal Development Specialist  
Proposal Management Section

END OF ADDENDUM



2

2

**Addendum No. 03**  
**ID 1146-75-73**  
**Revised Sheet 142**  
**August 3, 2023**

**LEGEND**

- PULL BOX 12" X 24"
- PULL BOX 24" X 36"
- PULL BOX 24" X 42"
- SIGNAL STANDARD, PERSPECTAL BASE
- SIGNAL HEAD, MAST ARM MOUNT
- SIGNAL POLE, MONOTUBE ARM
- LUMINAIRE
- CONTROL CABINET BASE
- 3" CONDUIT (2" from PB to T1/T2 concrete base)
- SIGNAL HEAD NUMBER MOUNTING CONFIGURATION
- LOOP DETECTOR (in 1" conduit)

MONOTUBE STRUCTURE NUMBERS	
SB4	S-44-0214
SB7	S-44-0215
SB10	S-44-0216
SB13	S-44-0217

CONFIGURATION WITH HEAD NUMBERS			
3-VL	3-V	4-VLFY	
3A, 3B	2A, 2B, 2C	3A, 3B	
3C, 3A	4A, 4B, 4C	4A, 1B, 1C	
3B, 7C	5A, 5B	5A, 5B	
7B, 7C	6A, 6B, 6C	5C, 5D	
	8A, 8B, 8C		
	OLA-1		
	OLA-2		

**TUNNEL VISORS NOTE**  
 SIGNAL HEADS # 1C, 4B, 5D, 8B, & OLA-2 SHALL HAVE TUNNEL VISORS.

**GENERAL NOTES**

THE LOCATION OF EXISTING AND PROPOSED UTILITY INSTALLATIONS AS SHOWN ON THE PLANS ARE APPROXIMATE. THERE MAY BE OTHER UTILITY INSTALLATIONS WITHIN THE PROJECT AREA THAT ARE NOT SHOWN. THE CONTRACTOR SHALL VERIFY THE LOCATIONS OF ALL UTILITIES PRIOR TO CONSTRUCTION.

TRAFFIC CONTROL SIGNAL  
 USH 45 & STH 15/BUS 45  
 CITY OF NEW LONDON  
 OUTAGAMIE COUNTY

SIGNAL NO. S68-0859  
 CONTROLLER TYPE: ECONOLITE

WISCONSIN DEPARTMENT OF TRANSPORTATION  
 APPROVAL RECOMMENDED  
 Date: 7-31-2021  
 APPROVED: Robert L. Schuurmans  
 REGIONAL TRAFFIC ENGINEER

APPROVAL RECOMMENDED  
 Date: 8-3-2021  
 APPROVED: William C. Gilmer  
 STATE TRAFFIC ENGINEER

Region Contact: RUS  
 Designed by: RUS

REVISED	
Rev No	Date
2	7/25/19
	7/25/19
	RU
	RU

MODIFIED LEFT-TURN PHASES 1 & 5 FROM PROTECTED-PERMITTED TO PROTECTED-ONLY

NEW ECONOLITE T52 CABINET, ADD MONOTUBES, FVA, AND CHANGE PHASES 1 & 5 TO PROTECTED ONLY

APPROVAL RECOMMENDED

Region: OUTAGAMIE  
 Date: 5/14/14  
 APPROVED: Robert L. Schuurmans  
 REGIONAL TRAFFIC ENGINEER

LEGEND

- PULL BOX 32' X 24'
- PULL BOX 24' X 36'
- PULL BOX 24' X 42'
- SIGNAL STANDARD/PEDESTAL BASE
- SIGNAL HEAD MAST ARM MOUNT
- SIGNAL POLE MOUNT/UB ARM
- LUMINAIRE
- CONTROL CABINET BASE
- 3' CONDUIT (2' from PB to 11/77 enclosure base)
- SIGNAL HEAD NUMBER MOUNTING CONFIGURATION
- LOOP DETECTOR (in 1' conduit)

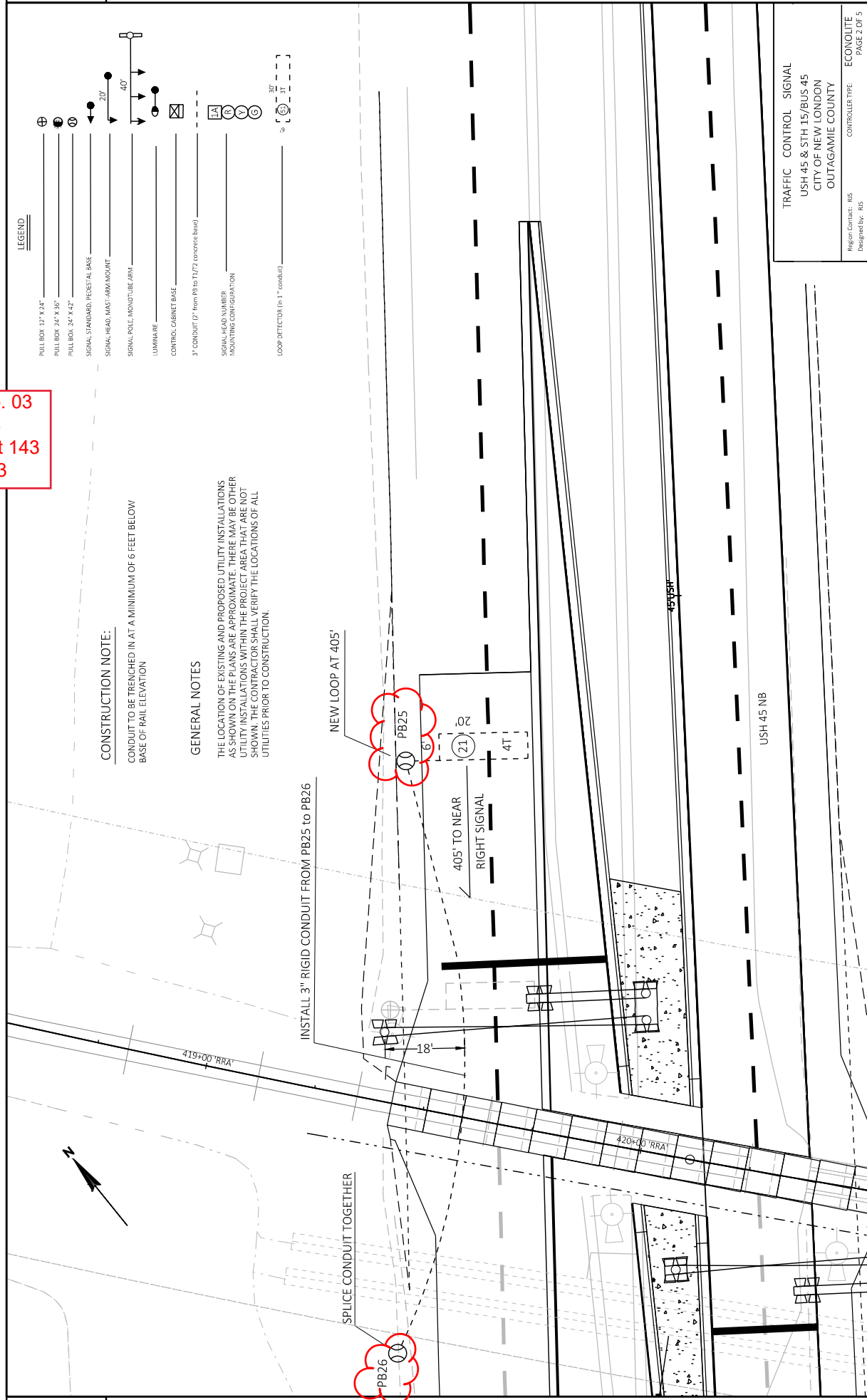
CONSTRUCTION NOTE:

CONDUIT TO BE TRENCHED IN AT A MINIMUM OF 6 FEET BELOW BASE OF RAIL ELEVATION

GENERAL NOTES

THE LOCATION OF EXISTING AND PROPOSED UTILITY INSTALLATIONS AS SHOWN ON THE PLANS ARE APPROXIMATE. THERE MAY BE OTHER UTILITY INSTALLATIONS WITHIN THE PROJECT AREA THAT ARE NOT SHOWN. THE CONTRACTOR SHALL VERIFY THE LOCATIONS OF ALL UTILITIES PRIOR TO CONSTRUCTION.

Addendum No. 03  
ID 1146-75-73  
Revised Sheet 143  
August 3, 2023



TRAFFIC CONTROL SIGNAL  
 USH 45 & STH 15/BUS 45  
 CITY OF NEW LONDON  
 OUTAGAMIE COUNTY

Region Contact: NIS  
 Designed by: fbs

CONTROLLER TYPE: ECONOLITE  
 PAGE 2 OF 5

PROJECT NO: 1146-75-73	COUNTY: OUTAGAMIE	TRAFFIC CONTROL SIGNAL - S68-0859	SHEET 143	E
FILE NAME: F:\03_TRAFFIC\S68-0859 (NEW LONDON)\NCR\S68-0859 2.0.DWG	LAYOUT NAME: S68-0859-143	PLOT DATE: 8/2/2023 9:26 AM	PLOT NAME: TALCOTT, MATTHEW J	PLOT SCALE: 1 IN=20 FT
WISDOT/CADDS SHEET 42				

Conduit Rigid Nonmetallic Schedule 40					
Location	652.0135 Rigid Metallic 3-inch	652.0225 2-inch	652.0235 3-inch	652.0615 3-inch Special	
USH 45 & STH 15/Bus 45 (\$44-0859)	LF	LF	LF	LF	
FROM					
TO					
PB1			10		
PB1			10		
PB1			10		
PB2			10		
PB2		80			
Splice point					
PB3				40	
PB3				40	
PB4				70	
PB4				70	
PB4		20			
PB5		40			
PB6			50		
PB6			50		
PB6			10		
PB7			70		
PB7		10			
PB8			40		
PB8		10			
PB8			40		
PB9			40		
PB9			40		
TOTALS	140	1,125	940	440	

**Addendum No. 03  
ID 1146-75-73  
Revised Sheet 142  
August 3, 2023**

Pull Boxes, Steel			
653.0105 12x24-inch EACH	653.0140 24x42-inch EACH	653.0905 Removing Pullboxes EACH	
USH 45 & STH 15/Bus 45 (\$44-0859)			
5	19	7	
TOTALS	19	7	

Concrete Bases						
654.0101 Type 1	654.0102 Type 2	654.0105 Type 5 PNR	654.0110 Type 10	654.0113 Type 13 Special	654.0217 Cabinet Control Type 9	654.0224 Cabinet Control Type 124
USH 45 & STH 15/Bus 45 (\$44-0859)						
4	1	2	2	2	1	1
TOTALS	4	1	2	2	1	1

Removing Concrete Bases	
204.0195	
USH 45 & STH 15/Bus 45 (\$44-0859)	
8	
TOTAL	8
TOTAL FROM REMOVING CONCRETE BASE SUMMARY	4
PROJECT TOTAL	12

**Addendum No. 03  
ID 1146-75-73  
Revised Sheet 251  
August 3, 2023**

**ALL ITEMS ARE CATEGORY 0010  
UNLESS NOTED OTHERWISE**



Proposal Schedule of Items

Proposal ID: 20230808008 Project(s): 1146-75-73

Federal ID(s): WISC 2023581

SECTION: 0001 Contract Items

Alt Set ID: Alt Mbr ID:

Proposal Line Number	Item ID Description	Approximate Quantity and Units	Unit Price	Bid Amount
0444	652.0235 Conduit Rigid Nonmetallic Schedule 40 3-Inch	940.000 LF	_____.	_____.
0446	652.0615 Conduit Special 3-Inch	440.000 LF	_____.	_____.
0448	652.0800 Conduit Loop Detector	1,100.000 LF	_____.	_____.
0450	653.0105 Pull Boxes Steel 12x24-Inch	5.000 EACH	_____.	_____.
0452	653.0140 Pull Boxes Steel 24x42-Inch	19.000 EACH	_____.	_____.
0454	653.0905 Removing Pull Boxes	7.000 EACH	_____.	_____.
0456	654.0101 Concrete Bases Type 1	4.000 EACH	_____.	_____.
0458	654.0102 Concrete Bases Type 2	1.000 EACH	_____.	_____.
0460	654.0105 Concrete Bases Type 5	2.000 EACH	_____.	_____.
0462	654.0110 Concrete Bases Type 10	2.000 EACH	_____.	_____.
0464	654.0113 Concrete Bases Type 13	2.000 EACH	_____.	_____.
0466	654.0217 Concrete Control Cabinet Bases Type 9 Special	1.000 EACH	_____.	_____.
0468	654.0224 Concrete Control Cabinet Bases Type L24	1.000 EACH	_____.	_____.
0470	655.0230 Cable Traffic Signal 5-14 AWG	1,900.000 LF	_____.	_____.
0472	655.0240 Cable Traffic Signal 7-14 AWG	410.000 LF	_____.	_____.