



Wisconsin Department of Transportation

Division of Transportation Systems Development

Bureau of Project Development
4822 Madison Yards Way, 4th Floor South
Madison, WI 53705

December 8, 2023

Telephone: (608) 266-1631
Facsimile (FAX): (608) 266-8459

NOTICE TO ALL CONTRACTORS:

Proposal #06: 5100-01-60, WISC 2024057
Cashton - Hillsboro
Kickapoo R Br to C Hillsboro Limit
STH 33
Vernon County

Letting of December 12, 2023

This is Addendum No. 01, which provides for the following:

Schedule of Items:

Added Bid Item Quantities					
Bid Item	Item Description	Unit	Proposal Total Prior to Addendum	Quantity Added	Proposal Total After Addendum
603.8000	Concrete Barrier Temporary Precast Delivered	LF	0	360	360
603.8125	Concrete Barrier Temporary Precast Installed	LF	0	720	720
614.0905	Crash Cushions Temporary	EA	0	4	4
643.3150	Temporary Marking Line Removable Tape 4-Inch	LF	0	720	720
643.3850	Temporary Marking Stop Line Removeable Tape	LF	0	22	22
646.9010	Marking Removal Line Water Blasting 4-Inch	LF	0	360	360
661.0101	Temporary Traffic Signals for Bridge (Structure) 01. B-62-63	EA	0	1	1

Plan Sheets:

Added Plan Sheets	
Plan Sheet	Plan Sheet Title (brief description of why sheet was added)
81A	Miscellaneous Quantities (Added quantities for traffic control for B-62-63)
131A-131N	Concrete Barrier Temporary Precast, 12'-6" (SDD added for use in traffic control for B-62-63)
199A	Traffic Control, One Lane Road with Temporary Signals (SDD added for traffic control for B-62-63)

Schedule of Items

Attached, dated December 8, 2023, are the revised Schedule of Items Pages 1 – 7.

Plan Sheets

The following 8½ x 11-inch sheets are attached and made part of the plans for this proposal:
Added: 81A, 131A-N and 199A.

The responsibility for notifying potential subcontractors and suppliers of these changes remains with the prime contractor.

Sincerely,

Mike Coleman

Proposal Development Specialist
Proposal Management Section

END OF ADDENDUM

Addendum No. 01
ID 5100-01-60
Added Sheet 81A
December 8, 2023

B-62-63 TRAFFIC CONTROL

CATEGORY	STATION	TO	STATION	LOCATION	LF	EACH	LF	LF	LF	LF	REMARKS
0050	500+09	-	505+69	LT & RT	-	-	720	-	-	-	661.0101.01 TEMPORARY TRAFFIC SIGNALS FOR BRIDGES (STRUCTURE) (01.B-62.63)
0050	501+09	-	504+69	LT & RT	360	4	-	-	-	360	646.9010 MARKING REMOVAL LINE WATER BLASTING 4-INCH
				TOTAL 0050	360	4	720	22	360	360	1

** TEMPORARY MARKING LINE REMOVABLE TAPE 4-INCH TO BE USED IN LIEU OF TEMPORARY PAVEMENT MARKING LINE

PROJECT NO: 5100-01-60 FILE NAME: N:\PDS\1\030000_mq.pbx	HWY: STH 33	COUNTY: VERNON	MISCELLANEOUS QUANTITIES	SHEET: 81A	E
---	-------------	----------------	--------------------------	------------	---

PLOT DATE: December 8, 2023 PLOT BY: A.R.H. PLOT NAME: PLOT SCALE: 1:1

**CONCRETE BARRIER,
TEMPORARY PRECAST,
12' - 6"**
STATE OF WISCONSIN
DEPARTMENT OF TRANSPORTATION 131A

GENERAL NOTES

PLACE BARRIER ON PAVED SURFACE BEFORE PLACEMENT OF TEMPORARY BARRIER.
REMOVE ALL LOOSE MATERIAL FROM PAVED SURFACE.

LOOP BARS C1, C2 AND C3 ARE NOT FOR PLACEMENT OR MOVEMENT OF BARRIER.

(100) PERMANENTLY FORM INTO ONE END OF BARRIER THE FOLLOWING INFORMATION:

A. TYPE OF BARRIER, WH-CBTP

B. MANUFACTURER'S MARK

C. DATE OF MANUFACTURE (MONTH AND YEAR)

(101) 1" OPTIONAL CHAMFER

(102) SEE LIFTING SLOT DETAIL

(103) SEE ANCHOR BLOCK DETAIL

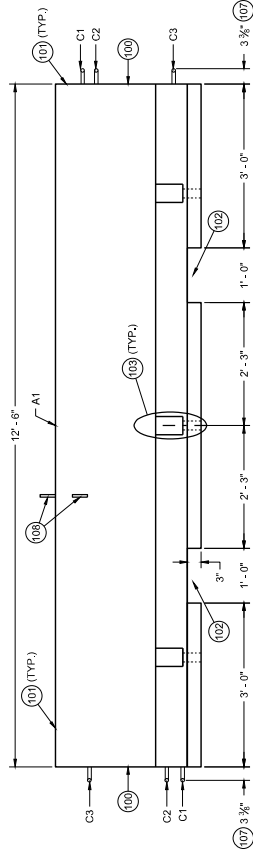
(104) 1 1/2" MIN. CLEAR COVER

(105) 2" MIN. CLEAR COVER

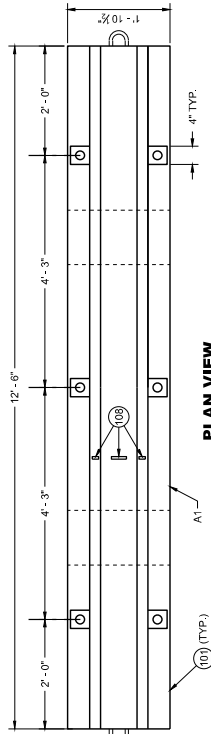
(106) 1" MIN. CLEAR COVER

(107) 3/8" MEASURED FROM FACE OF CONCRETE BARRIER TO OUTSIDE OF LOOP BAR (TYP.)

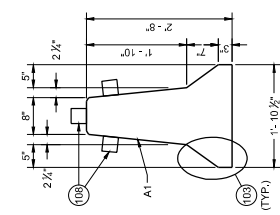
(108) USE DELINEATORS CONFORMING TO SECTION 633 OF THE STANDARD SPECIFICATIONS.
CONTRACTOR MAY USE ALTERNATE SHAPES AND HOUSING, INSTALL DELINEATORS
ACCORDING TO MANUFACTURER'S INSTRUCTION. INSTALL YELLOW REFLECTORS WHEN
OPERATING IN THE DARK. DELINEATORS SHALL BE SPACED TO MAINTAIN A MINIMUM
OF TRAFFIC SPACE DELINEATORS A MAXIMUM OF 25 FEET APART. PROVIDE TO ADJUNCT
DELINEATORS IN ADDITION TO SIDE MOUNTED DELINEATORS ON BARRIER INSTALLATIONS
LOCATED ON A CURVED ALIGNMENT LONGER THAN 200 FEET AND ON BARRIERS USED TO
SEPARATE OPPOSING TRAFFIC.



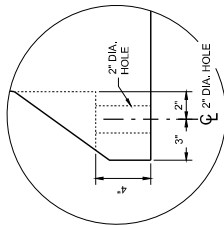
PROFILE VIEW



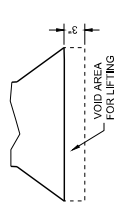
**PLAN VIEW
TEMPORARY BARRIER**



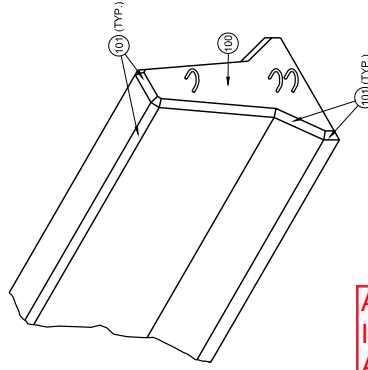
CROSS SECTION



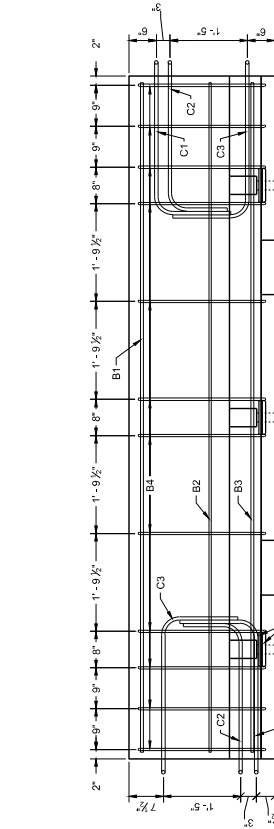
**ANCHOR BLOCK
DETAIL**



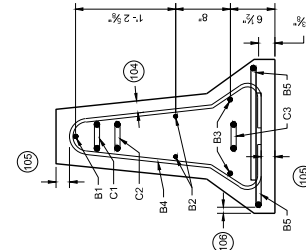
**LIFTING SLOT DETAIL
(TYP.)**



Addendum No. 01
ID 5100-01-60
Added Sheet 131A
December 8, 2023



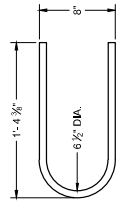
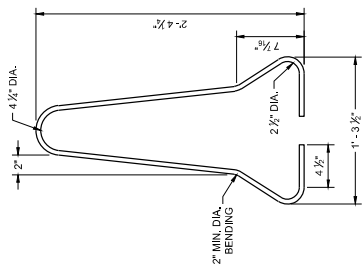
**PROFILE VIEW
TEMPORARY BARRIER REINFORCEMENT**



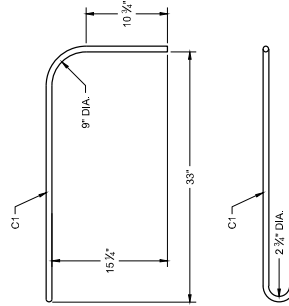
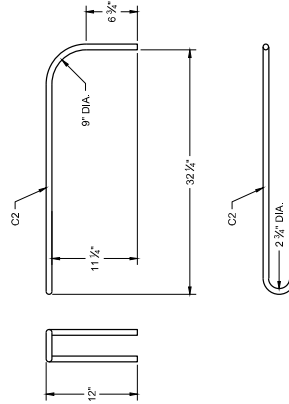
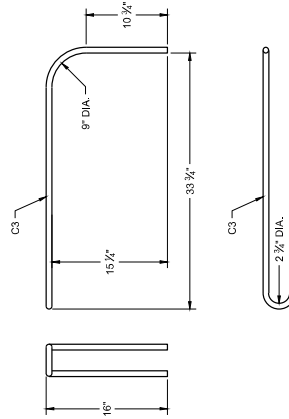
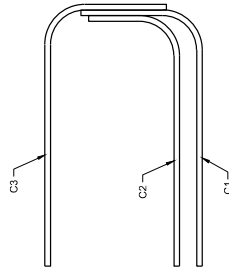
Addendum No. 01
ID 5100-01-60
Added Sheet 131B
December 8, 2023

CONCRETE BARRIER
TEMPORARY PRECAST,
12' - 6"

STATE OF WISCONSIN
DEPARTMENT OF TRANSPORTATION 131B



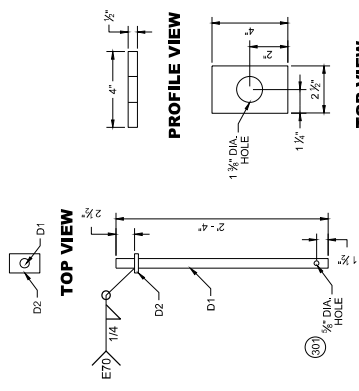
B5 BAR DETAIL



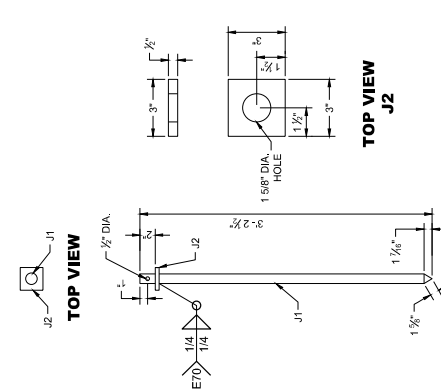
C BAR DETAILS

GENERAL NOTES

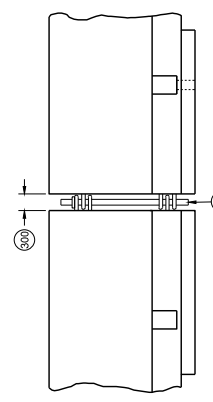
- (600) SET WITH 3/4" WOOD BLOCK.
- (601) HOLE IS OPTIONAL.
- (602) CONNECTOR PIN ASSEMBLY.
- (603) CONCRETE PAVEMENT, APPROACH SLAB, OR DECK.
- (604) CONCRETE DECK.
- (605) DO NOT USE ON CONCRETE BRIDGE DECK WITH ASPHALT OVERLAY OR CONCRETE PAVEMENT WITH ASPHALT OVERLAY.
- (606) MINIMUM OF 2" OF ASPHALT.
- (607) ASPHALT ANCHOR PIN ASSEMBLY.
- (608) IF DRILLING A PILOT HOLE, THE MAX. DIA. OF THE HOLE IS 3/4".
- (609) WHEN THERE IS ASPHALT OVERLAYING CONCRETE PAVEMENT, A 1/8" DIA. PILOT HOLE CAN BE DRILLED INTO THE OVERLAY AND CONCRETE. IF NEEDED DRILL A 3/4" PILOT HOLE IN BASE COURSE.



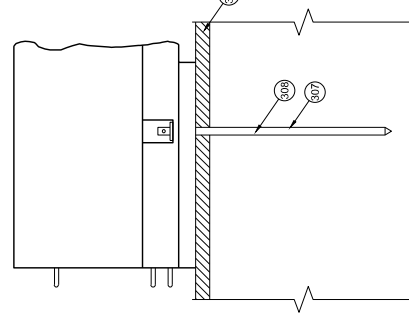
PROFILE PIN CONNECTOR PIN ASSEMBLY



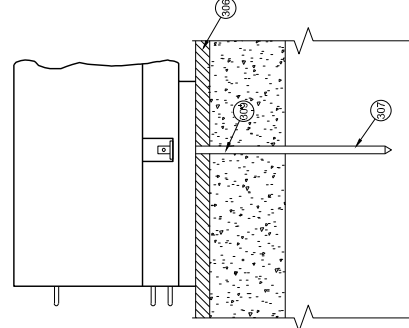
PROFILE VIEW ASPHALT ANCHOR PIN ASSEMBLY



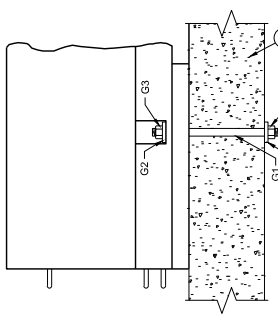
CONNECTING TEMPORARY BARRIER SECTIONS



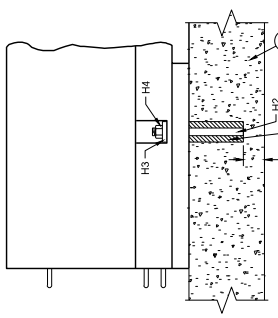
SIDE VIEW ASPHALT ANCHOR INSTALLATION THROUGH ASPHALT PAVEMENT



SIDE VIEW ASPHALT ANCHOR INSTALLATION THROUGH ASPHALT OVERLAY ON TOP OF CONCRETE PAVEMENT



SIDE VIEW THROUGH BOLT ANCHOR INSTALLATION

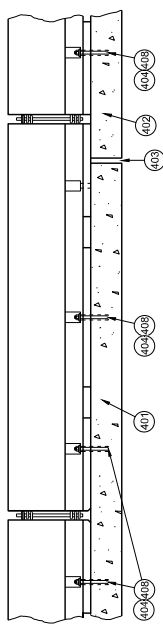


SIDE VIEW ADHESIVE ANCHOR INSTALLATION

Addendum No. 01
ID 5100-01-60
Added Sheet 131C
December 8, 2023

CONCRETE BARRIER TEMPORARY PRECAST, 12' - 6"

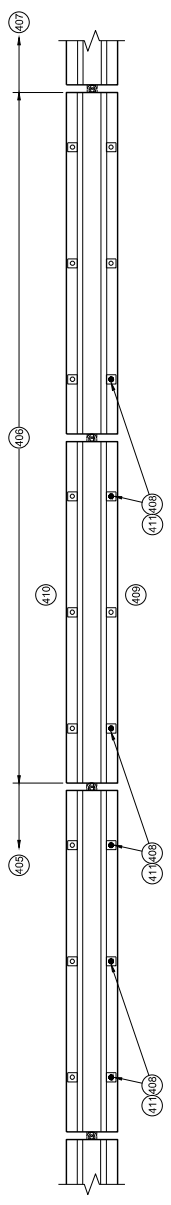
STATE OF WISCONSIN
DEPARTMENT OF TRANSPORTATION 131C



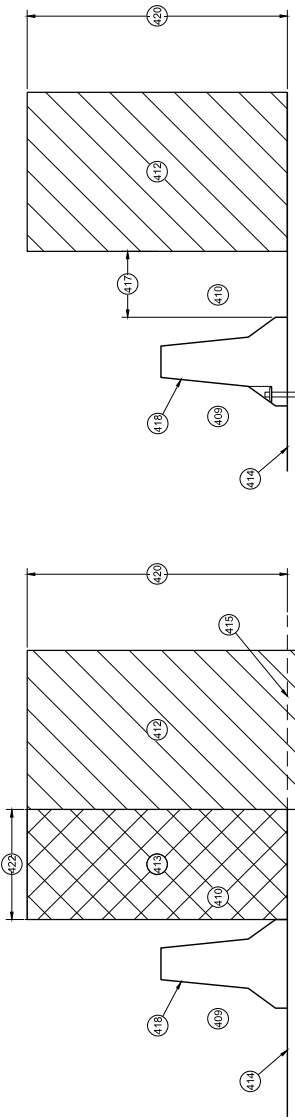
PROFILE VIEW
ANCHORED BARRIER NEAR EXPANSION JOINT

GENERAL NOTES

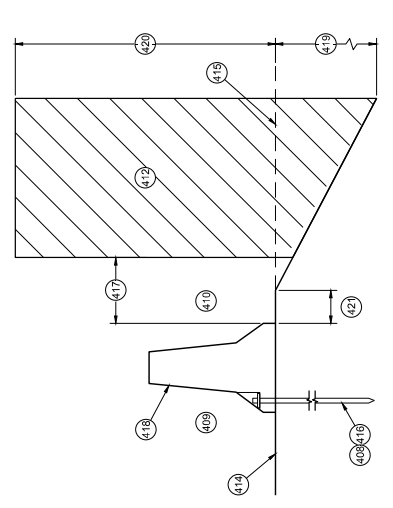
- 400 NO SINGLE CONCRETE BARRIER SECTION SHALL BE ANCHORED TO BOTH THE BRIDGE DECK AND THE APPROACH SLAB. THE ANCHOR ROD SHALL BE PLACED IN THE APPROACH SLAB WITH THE DETAIL, NO MORE THAN ONE ANCHOR BOLT SHALL BE ELIMINATED FROM A BARRIER SECTION WHEN SPANNING AN EXPANSION JOINT.
- 401 CONCRETE DECK
- 402 CONCRETE DECK OR APPROACH SLAB
- 403 EXPANSION JOINT
- 404 ADHESIVE ANCHOR SHOWN. SEE ANCHOR DETAILS.
- 405 ANCHORED TEMPORARY BARRIER
- 406 TRANSITION FROM ANCHORED TEMPORARY BARRIER TO FREE STANDING
- 407 FREE STANDING BARRIER
- 408 REMOVE ALL ANCHORS WHEN NO LONGER NEEDED. FILL CONCRETE PAVEMENTS, DECKS AND APPROACH PAVEMENTS WITH ASTM D6680 TYPE II RUBBERIZED CRACK FILLER.
- 409 TRAFFIC SIDE
- 410 NON-TRAFFIC SIDE
- 411 ANCHOR LOCATION. SEE ANCHORING DETAILS.
- 412 WORK AREA
- 413 AREA FREE OF OBJECTS AND WORKERS
- 414 GRADE LINE
- 415 EXTENDED GRADE LINE
- 416 ANCHORED TEMPORARY BARRIER. SEE BOLT THROUGH DECK, REMOVABLE ADHESIVE ANCHOR OR AN ASPHALT ANCHOR ROD DETAILS FOR MORE INFORMATION. ASPHALT ANCHOR ROD SHOWN.
- 417 WHEN OBJECTS EXTEND ABOVE THE GRADE, A MINIMUM OF 1 FOOT IS REQUIRED FROM BACK OF BARRIER TO OBJECT.
- 418 OBJECTS ARE NOT TO BE PLACED ON, ADJACENT TO, OR ALLOWED TO LEAN AGAINST THE BARRIER WITHOUT WRITTEN PERMISSION OF THE PROJECT ENGINEER.
- 419 DEPTHS OF 3 FEET OR MORE.
- 420 Y = 6.5'
- 421 OFFSET FROM BACK OF BARRIER EDGE:
CONCRETE PAVEMENT 0.5'
ASPHALT 0.5'
- 422 POSTED SPEED (MPH):
4.0' 40 OR LOWER
2.0' 40 OR LOWER



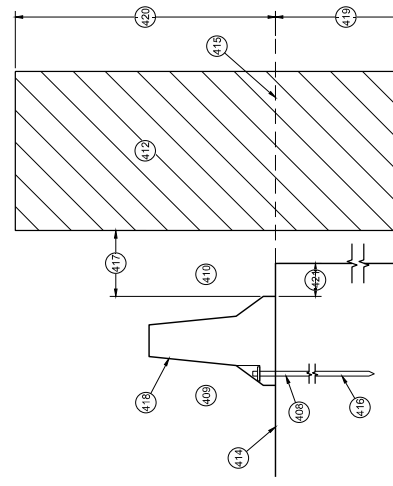
PLAN VIEW
TRANSITION FROM FREE STANDING TO ANCHORED BARRIER



CROSS SECTION
FREE STANDING BARRIER



CROSS SECTION
ANCHORED BARRIER FOR OBJECTS ABOVE THE GRADE LINE AND NEAR THE BARRIER



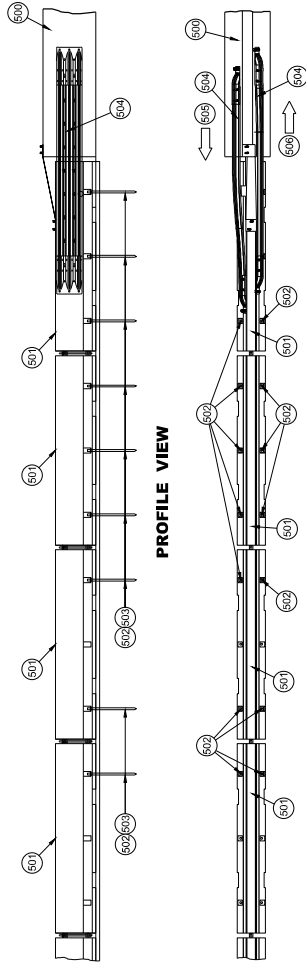
CROSS SECTION
ANCHORED BARRIER NEAR A SLOPE

**CONCRETE BARRIER,
TEMPORARY PRECAST,
12' - 6"**
STATE OF WISCONSIN
DEPARTMENT OF TRANSPORTATION 131D

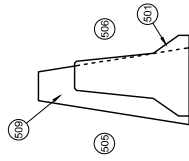
Addendum No. 01
ID 5100-01-60
Added Sheet 131D
December 8, 2023

GENERAL NOTES

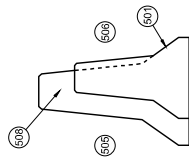
- 500 EXISTING RIGID BARRIERS (VARIES)
- 501 TEMPORARY BARRIER
- 502 SEE OTHER DETAIL ON HOW TO ANCHOR TEMPORARY BARRIER (BARRIER ASPHALT ANCHOR SHOWN)
- 503 ANCHORS ARE REQUIRED ON BOTH SIDE OF THE TEMPORARY BARRIER.
- 504 NESTED RAILS ARE REQUIRED ON BOTH SIDES OF THE TEMPORARY BARRIER FOR ALL INSTALLATIONS.
- 505 TRAFFIC TRAVELS FROM PERMANENT BARRIER TO TEMPORARY BARRIER.
- 506 TRAFFIC TRAVELS FROM TEMPORARY BARRIER TO PERMANENT BARRIER.
- 507 VERTICAL BARRIER
- 508 SAFETY SHAPE BARRIER
- 509 SINGLE SLOPE BARRIER
- 510 CAP END PLATE PLACED FLUSH WITH UPSTREAM END OF RIGID BARRIER.
- 511 BENT THREE BEAM TO FIT.
- 512 THREE BEAM PIECES ARE OFFSET 15% TO PREVENT INTERFERENCE FROM THE ANCHORS ON OPPOSING SIDES.
- 513 TWO (2) P1, P2 AND P3 ARE REQUIRED
- 514 FIVE (5) N1, N2 AND N3 ARE REQUIRED
- 515 TWO (2) R1, R2 AND R3 ARE REQUIRED
- 516 CUT WOOD BLOCK TO FIT.
- 517 SEE THREE BEAM RAIL TERMINAL CONNECTOR DETAIL ASSEMBLY.
- 518 CAP ASSEMBLY
- 519 4" MAX. GAP BETWEEN TEMPORARY BARRIER AND RIGID BARRIER.
- 520 ALL TWELVE SPLICE HOLES REQUIRE M1 AND M2



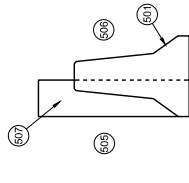
PROFILE VIEW



**CROSS SECTION
TEMPORARY BARRIER
PLACEMENT SINGLE SLOPE**

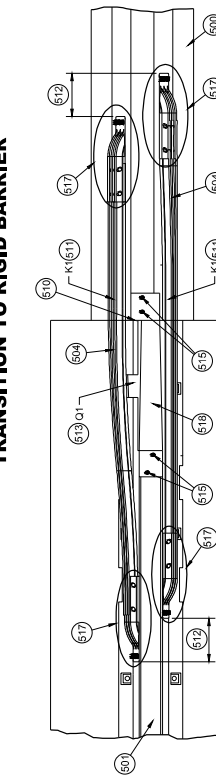


**CROSS SECTION
TEMPORARY BARRIER
PLACEMENT SAFETY SHAPE**

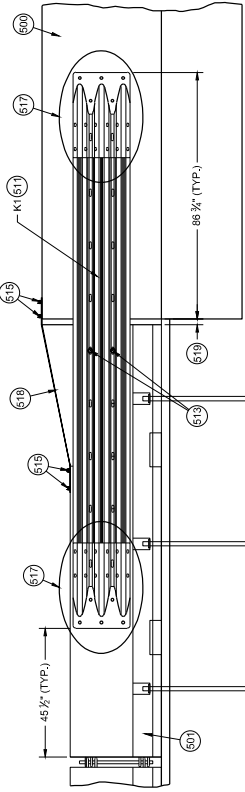


**CROSS SECTION
TEMPORARY BARRIER
PLACEMENT VERTICAL**

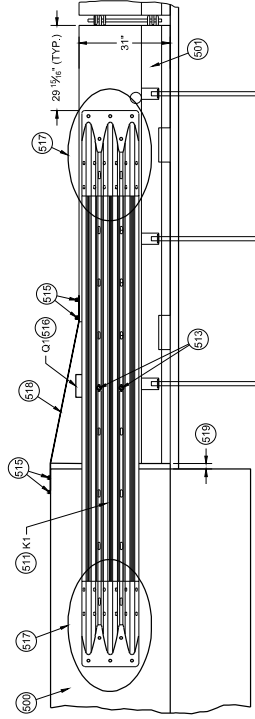
**PLAN VIEW
TRANSITION TO RIGID BARRIER**



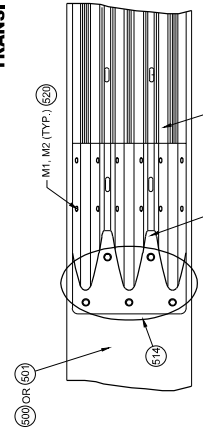
**PLAN DETAIL VIEW
TRANSITION TO RIGID BARRIER**



**FRONT DETAIL VIEW
TRANSITION TO RIGID BARRIER**



**BACK DETAIL VIEW
TRANSITION TO RIGID BARRIER**



**517 DETAIL PLAN VIEW
THREE BEAM RAIL TERMINAL CONNECTOR ASSEMBLY**

Addendum No. 01
ID 5100-01-60
Added Sheet 131E
December 8, 2023

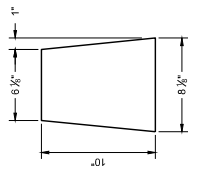
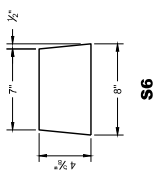
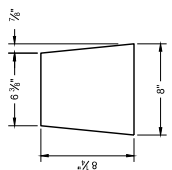
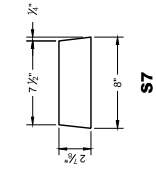
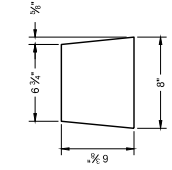
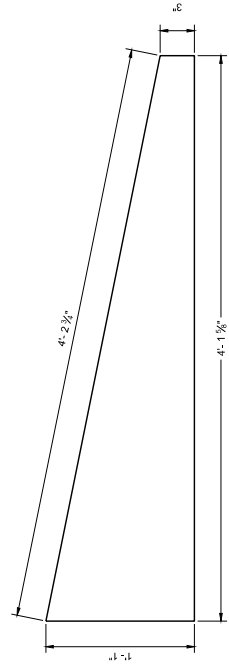
**CONCRETE BARRIER
TEMPORARY PRECAST,
12' - 6"**

STATE OF WISCONSIN
DEPARTMENT OF TRANSPORTATION 131E

**CONCRETE BARRIER
TEMPORARY PRECAST,
12' - 6"**

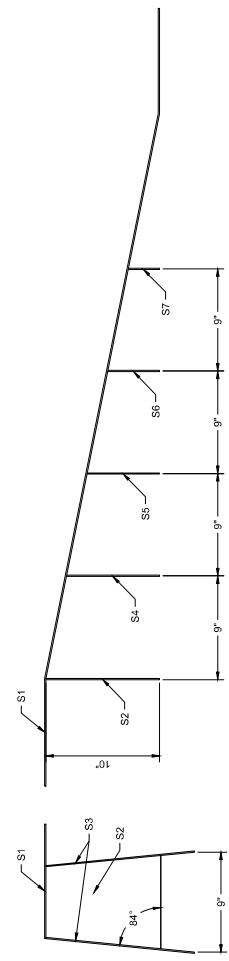
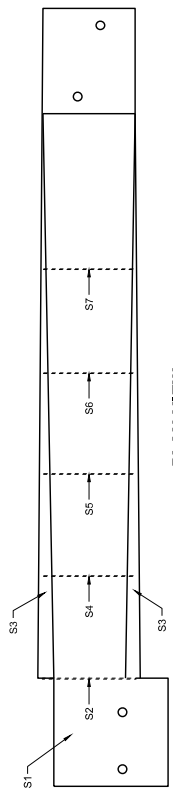
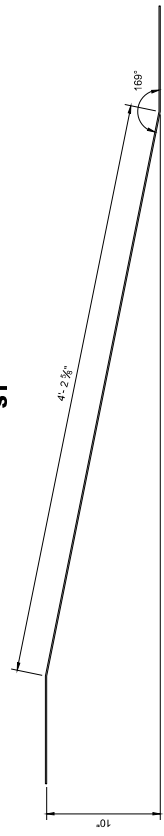
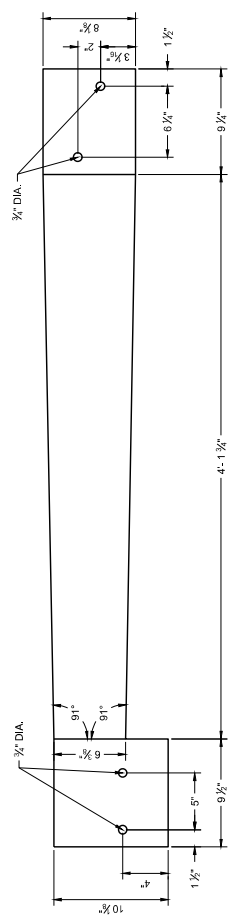
STATE OF WISCONSIN
DEPARTMENT OF TRANSPORTATION **131F**

Addendum No. 01
ID 5100-01-60
Added Sheet 131F
December 8, 2023



GENERAL NOTES

- STITCH WELD GUSSET PLATES AND END PLATES ON THREE SIDES
- STITCH WELD TWO SIDE PLATES TO TOP PLATE, END PLATE AND GUSSETS.
- (600) SIDE PLATES (S3) NOT SHOWN FOR CLARITY.



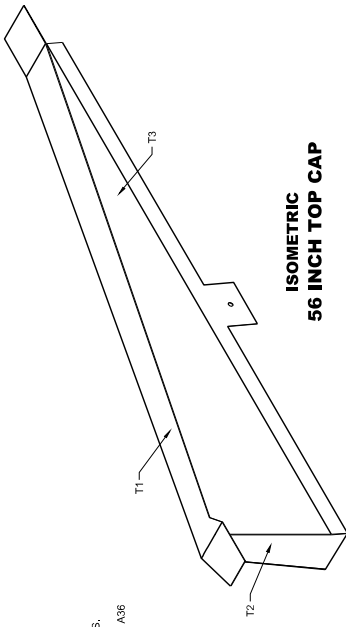
(600)

42" TOP CAP ASSEMBLY

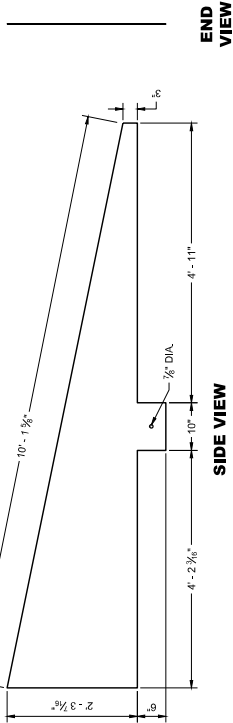
BACK VIEW

GENERAL NOTES

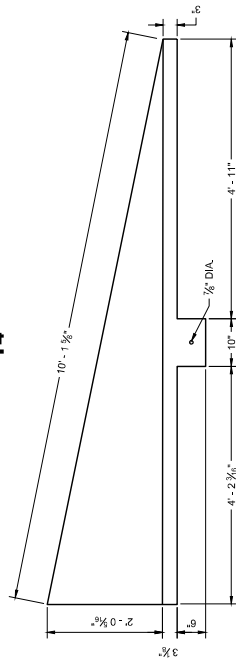
- STITCH WELD GUSSET PLATES AND END PLATES ON THREE SIDES
- STITCH WELD TWO SIDE PLATES TO TOP PLATE, END PLATE AND GUSSETS.
- SIDE PLATES, TOP PLATE, END PLATE AND GUSSETS ARE 12 GAUGE ASTM A36 GALVANIZED STEEL.
- (700) SIDE PLATES (T3 AND T4) NOT SHOWN FOR CLARITY.



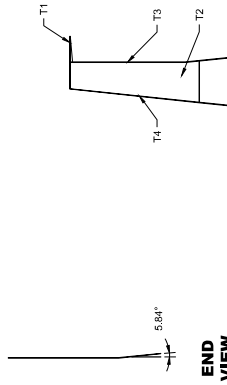
**ISOMETRIC
56 INCH TOP CAP**



**SIDE VIEW
T4**

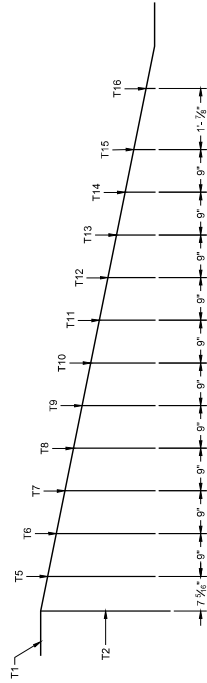


**SIDE VIEW
T3**

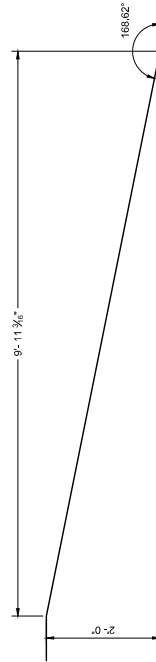


END VIEW

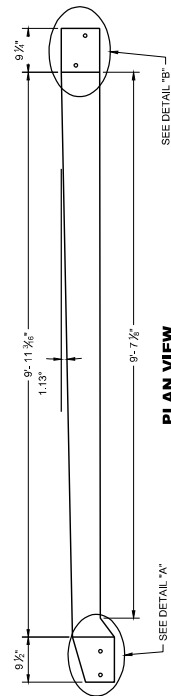
**END VIEW
56 INCH TOP CAP**



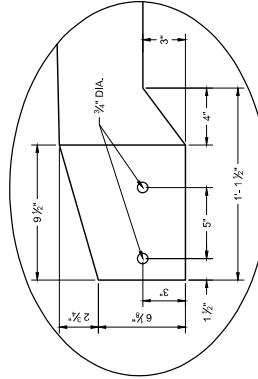
**SIDE VIEW
56 INCH TOP CAP**



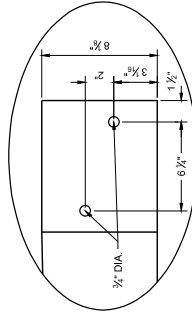
**SIDE VIEW
TOP PLATE T1**



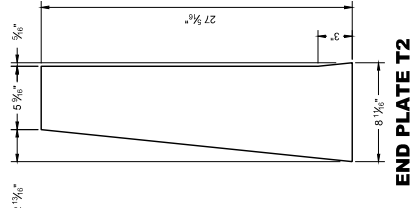
**PLAN VIEW
TOP PLATE T1**



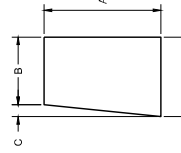
DETAIL "A"



DETAIL "B"



END PLATE T2



**GUSSET PLATES
T5 - T16**

GUSSET NO.	GUSSET DIMENSIONS			
	A	B	C	D
T5	22 3/8"	5 1/8"	2 3/8"	8 1/8"
T6	21"	5 1/4"	2 3/8"	8 1/8"
T7	19 1/2"	6 3/4"	1 1/8"	8 1/8"
T8	17 1/2"	6 1/4"	1 1/8"	8 1/8"
T9	15 1/8"	6 7/8"	1 1/8"	8 1/8"
T10	13 1/2"	6 3/4"	1 1/8"	8 1/8"
T11	11 1/8"	6 3/8"	1 1/4"	8 1/8"
T12	10 1/8"	7"	1 1/8"	8 1/8"
T13	8 3/4"	7 1/8"	1 1/8"	8 1/8"
T14	6 1/4"	7 3/4"	1 1/8"	8 1/8"
T15	4 1/8"	7 1/8"	1 1/2"	8"
T16	2 1/8"	7 3/4"	1 1/2"	8"

**CONCRETE BARRIER,
TEMPORARY PRECAST,
12' - 6"**

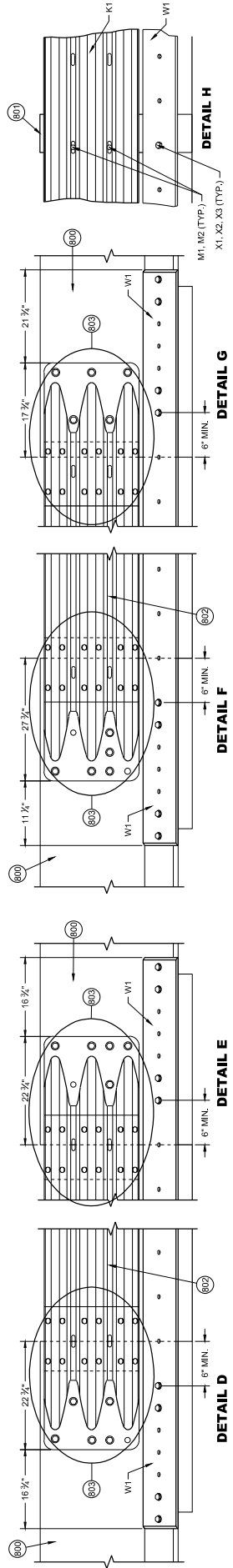
STATE OF WISCONSIN
DEPARTMENT OF TRANSPORTATION 131G

Addendum No. 01
ID 5100-01-60
Added Sheet 131G
December 8, 2023

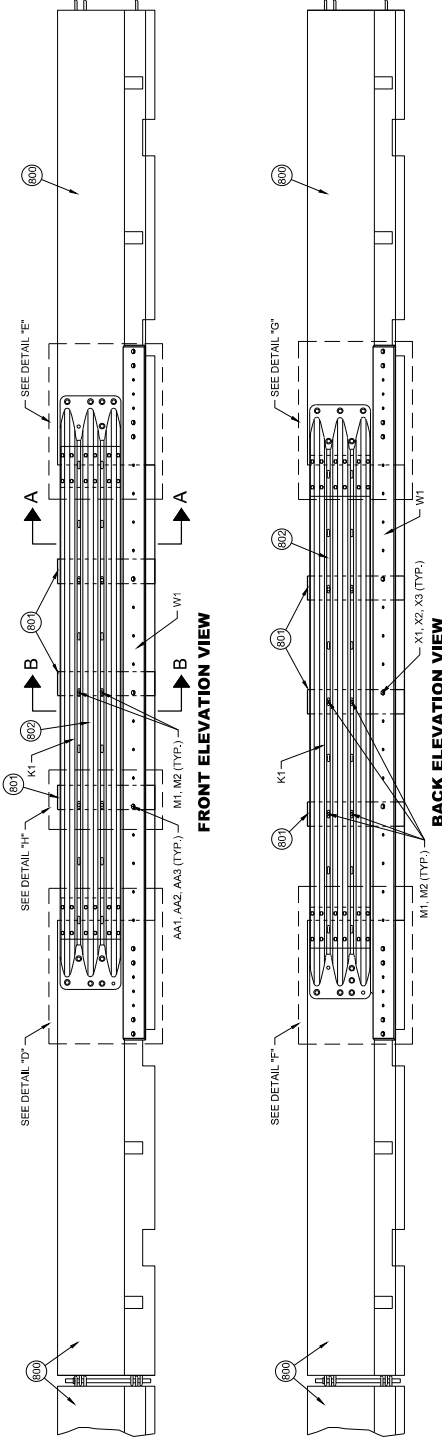
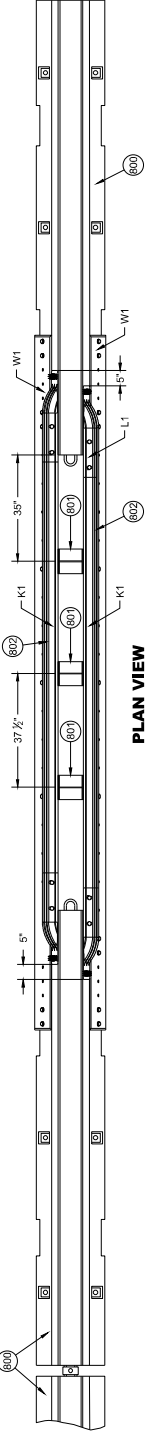
Addendum No. 01
ID 5100-01-60
Added Sheet 131H
December 8, 2023

CONCRETE BARRIER
TEMPORARY PRECAST,
12' - 6"

STATE OF WISCONSIN
DEPARTMENT OF TRANSPORTATION
131H



- GENERAL NOTES**
- 600 FREE STANDING TEMPORARY BARRIER
 - 601 GAP STIFFENER ASSEMBLY
 - 602 THRIE BEAMS ARE NESTED ON BOTH SIDES OF THE TEMPORARY BARRIER.
 - 603 SEE THRIE BEAM RAIL TERMINAL CONNECTOR DETAIL

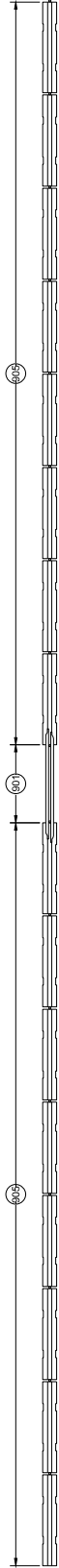


PORTABLE CONCRETE BARRIER GAP THRIE BEAM COVER

Addendum No. 01
ID 5100-01-60
Added Sheet 1311
December 8, 2023

CONCRETE BARRIER
TEMPORARY PRECAST,
12' - 6"

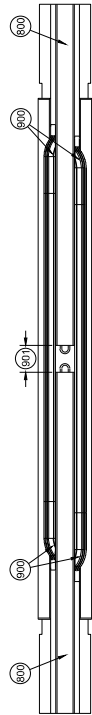
STATE OF WISCONSIN
DEPARTMENT OF TRANSPORTATION 1311



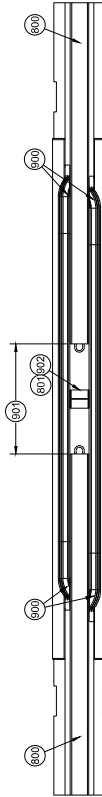
PLAN VIEW
GAP WITHIN SPACING

GENERAL NOTES

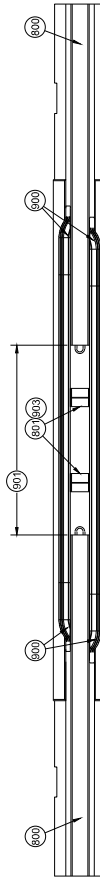
- 600 SEE OTHER DETAILS FOR TEMPORARY GAP HARDWARE (TYP.)
- 601 TEMPORARY BARRIER GAP
- 602 GAP STIFFENER ASSEMBLY CENTERED IN THE GAP.
- 603 GAP STIFFENER ASSEMBLY IS OFFSET 18 3/4" FROM CENTER
- 604 MINIMUM NUMBER OF GAP STIFFENERS SHOWN FOR THE GAP RANGE SHOWN.
- 605 MINIMUM OF 8 CONTINUOUS FREE STANDING TEMPORARY BARRIERS



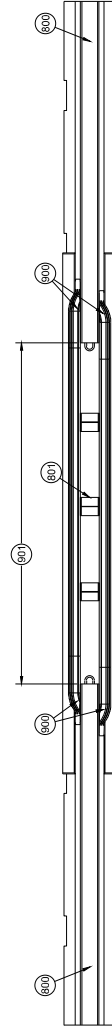
PLAN VIEW
TEMPORARY BARRIER GAP OVER 4" TO 1' MAX.



PLAN VIEW
TEMPORARY BARRIER GAP OVER 1' TO 4' MAX.



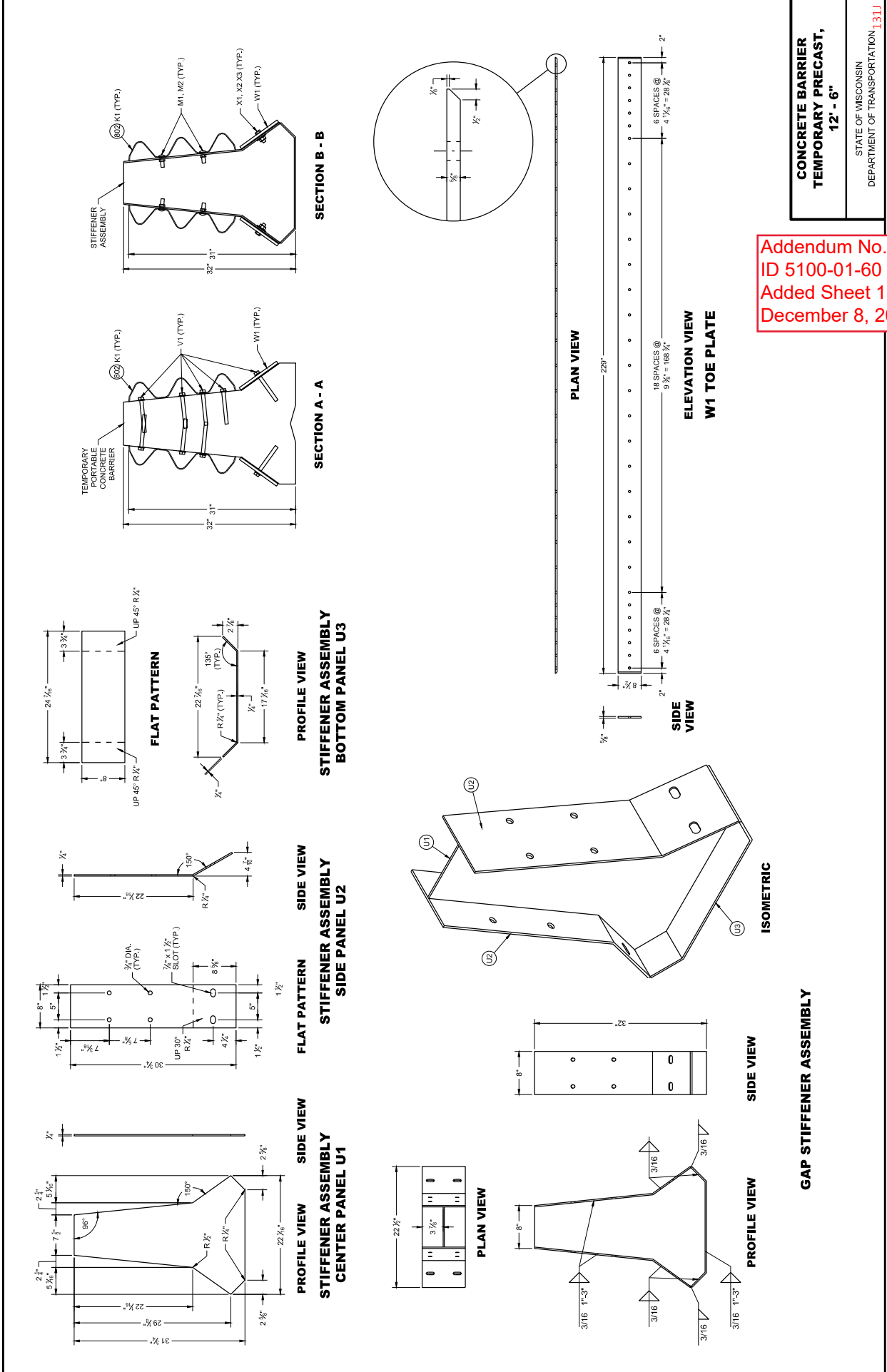
PLAN VIEW
TEMPORARY BARRIER GAP OVER 4' TO 7' MAX.



PLAN VIEW
TEMPORARY BARRIER GAP OVER 7' TO 12.5' MAX.

CONCRETE BARRIER
TEMPORARY PRECAST,
12' - 6"
STATE OF WISCONSIN
DEPARTMENT OF TRANSPORTATION 131J

Addendum No. 01
ID 5100-01-60
Added Sheet 131J
December 8, 2023



Addendum No. 01
ID 5100-01-60
Added Sheet 131K
December 8, 2023

CONCRETE BARRIER
TEMPORARY PRECAST,
12' - 6"

STATE OF WISCONSIN
DEPARTMENT OF TRANSPORTATION 131K

GENERAL NOTES

- (108) 1" DIA. HOLE
- (109) 3/4" DIA. HOLE
- (109) PROVIDE HOLES IN THRIE BEAM TERMINAL CONNECTOR TO LIMIT STEEL STRESS CONCENTRATION. PROVIDE HOLES IN THRIE BEAM TERMINAL CONNECTOR WITH ADDITIONAL HOLES FROM SUPPLIER.

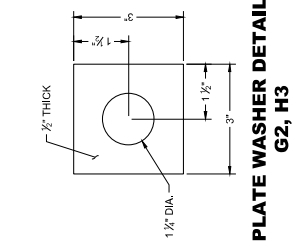
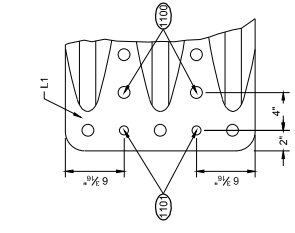
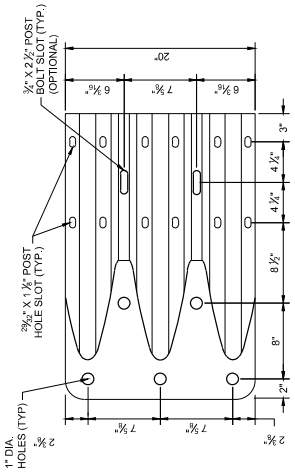


PLATE WASHER DETAIL
G2, H3



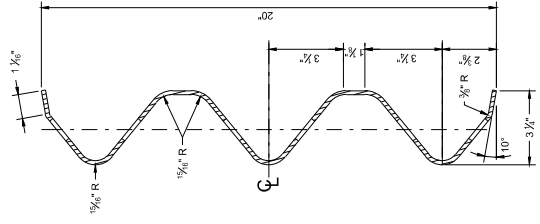
ELEVATION VIEW

ADDITIONAL THRIE BEAM
TERMINAL CONNECTOR HOLE DETAIL

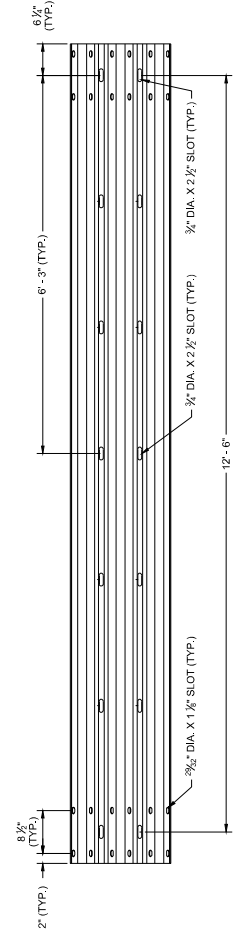


ELEVATION VIEW

THRIE BEAM
TERMINAL CONNECTOR



SECTION THROUGH
BEAM K1



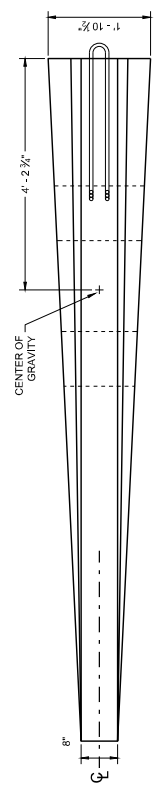
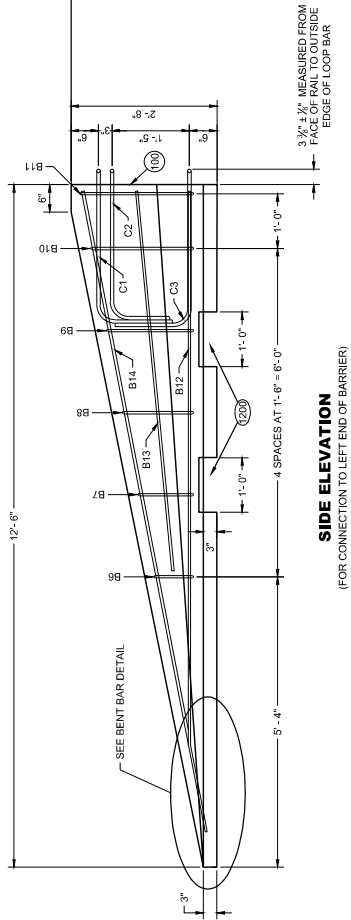
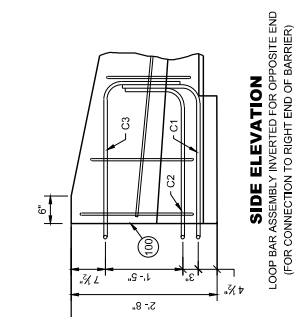
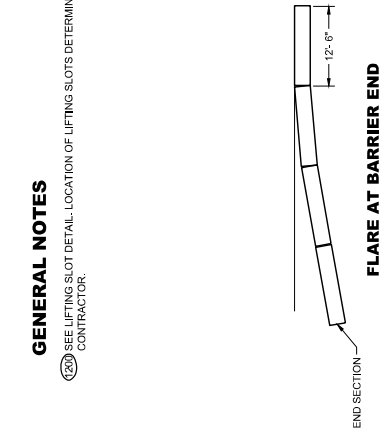
SLOTTED THRIE BEAM RAIL K1

Addendum No. 01
 ID 5100-01-60
 Added Sheet 131L
 December 8, 2023

**CONCRETE BARRIER
 TEMPORARY PRECAST,
 12' - 6"**

STATE OF WISCONSIN
 DEPARTMENT OF TRANSPORTATION 131L

GENERAL NOTES
 (200) SEE LIFTING SLOT DETAIL. LOCATION OF LIFTING SLOTS DETERMINED BY CONTRACTOR.

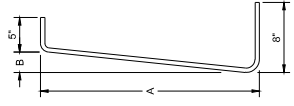


PLAN VIEW

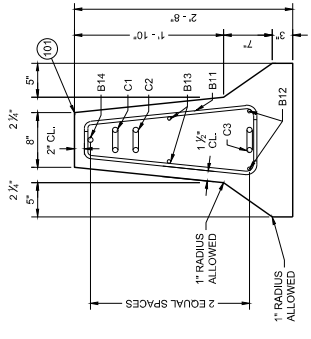


BAR	A	B
B6	10"	1"
B7	1'-1"	1 1/2"
B8	1'-5"	1 1/2"
B9	1'-8"	1 1/2"
B10	2'-0 1/2"	2 3/4"
B11	2'-3"	2 3/4"

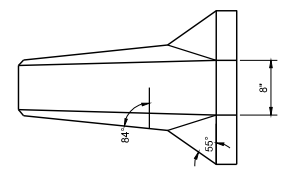
B BARS
 2 OF EACH SIZE REQUIRED FOR STIRRUP ASSEMBLY



BENT BAR DETAIL



END SECTION



FRONT ELEVATION

DETAILS OF BARRIER TAPER SECTION

BILL OF MATERIALS - CONCRETE BARRIER PRECAST

PART	DESCRIPTION	MATERIALS SPECIFICATIONS	NOTES
A1	PRECAST TEMPORARY BARRIER - CONCRETE	MIN. = Fc, 5000 PSI	
B1	REBAR	STANDARD SPEC. 505.2 GRADE 60 UNCOATED REBAR	#6 REBAR, LENGTH 12'-2"
B2	REBAR	STANDARD SPEC. 505.2 GRADE 60 UNCOATED REBAR	#4 REBAR, LENGTH 12'-2"
B3	REBAR	STANDARD SPEC. 505.2 GRADE 60 UNCOATED REBAR	#6 REBAR, LENGTH 12'-2"
B4	REBAR	STANDARD SPEC. 505.2 GRADE 60 UNCOATED REBAR	#4 REBAR, LENGTH 6'-0"
B5	REBAR	STANDARD SPEC. 505.2 GRADE 60 UNCOATED REBAR	#6 REBAR, LENGTH 2'-11"
B6	REBAR	STANDARD SPEC. 505.2 GRADE 60 UNCOATED REBAR	#4 REBAR, LENGTH 1'-11"
B7	REBAR	STANDARD SPEC. 505.2 GRADE 60 UNCOATED REBAR	#4 REBAR, LENGTH 2'-5"
B8	REBAR	STANDARD SPEC. 505.2 GRADE 60 UNCOATED REBAR	#4 REBAR, LENGTH 3'-2"
B9	REBAR	STANDARD SPEC. 505.2 GRADE 60 UNCOATED REBAR	#4 REBAR, LENGTH 3'-4"
B10	REBAR	STANDARD SPEC. 505.2 GRADE 60 UNCOATED REBAR	#4 REBAR, LENGTH 12'-0"
B11	REBAR	STANDARD SPEC. 505.2 GRADE 60 UNCOATED REBAR	#4 REBAR, LENGTH 7'-9"
B12	REBAR	STANDARD SPEC. 505.2 GRADE 60 UNCOATED REBAR	#6 REBAR, LENGTH 11'-9"
B13	REBAR	STANDARD SPEC. 505.2 GRADE 60 UNCOATED REBAR	#4 REBAR, LENGTH 11'-9"
B14	REBAR	STANDARD SPEC. 505.2 GRADE 60 UNCOATED REBAR	#4 REBAR, LENGTH 11'-9"
C1	LOOP BAR	ASTM A709 GRADE 70 SMOOTH BAR OR ASTM A706 GRADE 60 REBAR UNCOATED	3/4" DIA.
C2	LOOP BAR	ASTM A709 GRADE 70 SMOOTH BAR OR ASTM A706 GRADE 60 REBAR UNCOATED	3/4" DIA.
C3	LOOP BAR	ASTM A709 GRADE 70 SMOOTH BAR OR ASTM A706 GRADE 60 REBAR UNCOATED	3/4" DIA.
D1	CONNECTION PIN - ROD	ASTM A572 MAX STRENGTH 50 KSI / ASTM A575 MAX STRENGTH 50 KSI / ASTM A692 MAX STRENGTH 50 KSI / ASTM A692 MAX STRENGTH 50 KSI / ASTM A692 MAX STRENGTH 50 KSI / ASTM A692 MAX STRENGTH 50 KSI	1 1/2" DIA.
D2	CONNECTION PIN - TOP PLATE	HOT DIP ASHTO M232 CLASS / ASTM A163 CLASS C / ASTM F2329 C OR MECHANICAL GALVANIZE TO ASHTO M298 CLASS 55 TYPE 2 / A307 GRADE 2 UNC	1 1/2" DIA.
G1	BOLT THROUGH ANCHOR - THREADED ROD	ASTM A36 MIN. STRENGTH 36 KSI / ASTM A572 MAX STRENGTH 50 KSI / ASTM A575 MAX STRENGTH 50 KSI / ASTM A692 MAX STRENGTH 50 KSI / ASTM A692 MAX STRENGTH 50 KSI	1 1/2" DIA.
G2	BOLT THROUGH ANCHOR - WASHER, SQUARE	HOT DIP ASHTO M232 CLASS / ASTM A163 CLASS C / ASTM F2329 C OR MECHANICAL GALVANIZE TO ASHTO M298 CLASS 55 TYPE 2 / A307 GRADE 2 UNC	1 1/2" DIA.
G3	BOLT THROUGH ANCHOR - NUT	HOT DIP ASHTO M232 CLASS / ASTM A163 CLASS C / ASTM F2329 C OR MECHANICAL GALVANIZE TO ASHTO M298 CLASS 55 TYPE 2 / A307 GRADE 2 UNC	1 1/2" DIA.
H1	ADHESIVE ANCHOR - ADHESIVE	10C ES-A3098, 5 1/2" EMBEDMENT WITH A MIN. BOND STRENGTH OF 1,650 PSI. SEE 603.2 AND 603.3.1.2 OF THE WISCONSIN STANDARD SPECIFICATIONS FOR MORE INFORMATION ON ADHESIVE ANCHORS.	
H2	ADHESIVE ANCHOR - THREADED ROD	HOT DIP ASHTO M232 CLASS / ASTM A163 CLASS C / ASTM F2329 C OR MECHANICAL GALVANIZE TO ASHTO M298 CLASS 55 TYPE 2 / A307 GRADE 2 UNC	
H3	ADHESIVE ANCHOR - WASHER, SQUARE	ASTM A36 MIN. STRENGTH 36 KSI / ASTM A572 MAX STRENGTH 50 KSI / ASTM A575 MAX STRENGTH 50 KSI / ASTM A692 MAX STRENGTH 50 KSI	
H4	ADHESIVE ANCHOR - NUT	HOT DIP ASHTO M232 CLASS / ASTM A163 CLASS C / ASTM F2329 C OR MECHANICAL GALVANIZE TO ASHTO M298 CLASS 55 TYPE 2 / A307 GRADE 2 UNC	
J1	ASPHALT ANCHOR PIN - ROD	ASTM A36 MIN. STRENGTH 36 KSI / ASTM A572 MAX STRENGTH 50 KSI / ASTM A575 MAX STRENGTH 50 KSI / ASTM A692 MAX STRENGTH 50 KSI	1 1/2" DIA.
J2	ASPHALT ANCHOR PIN - STOP PLATE	ASTM A36 MIN. STRENGTH 36 KSI / ASTM A572 MAX STRENGTH 50 KSI / ASTM A575 MAX STRENGTH 50 KSI / ASTM A692 MAX STRENGTH 50 KSI	1 1/2" DIA.
K1	THREE BEAM RAIL	ASHTO M180 CLASS A, TYPE 2, APPROVED PRODUCER	12 GAUGE
L1	THREE BEAM RAIL - TERMINAL	ASHTO M180 CLASS A, TYPE 2, APPROVED PRODUCER	12 GAUGE

PART	DESCRIPTION	MATERIALS SPECIFICATIONS	NOTES
M1	SPLICE BOLT	HOT DIP ASHTO M232 CLASS / ASTM A163 CLASS C / ASTM F2329 C OR MECHANICAL GALVANIZE TO ASHTO M298 CLASS 55 TYPE 2 / A307 GRADE 2 UNC / ASTM F1554 GRADE 36	3/4" DIA.
M2	SPLICE BOLT - NUT	HOT DIP ASHTO M232 CLASS / ASTM A163 CLASS C / ASTM F2329 C OR MECHANICAL GALVANIZE TO ASHTO M298 CLASS 55 TYPE 2 / A307 GRADE 2 UNC / ASTM F1554 GRADE 36	3/4" DIA.
N1	THREE BEAM RAIL TERMINAL - MECHANICAL ANCHOR	HOT DIP ASHTO M232 CLASS / ASTM A163 CLASS C / ASTM F2329 C OR MECHANICAL GALVANIZE TO ASHTO M298 CLASS 55 TYPE 2 / A307 GRADE 2 UNC / ASTM F1554 GRADE 36	3/4" DIA.
N2	THREE BEAM RAIL TERMINAL - WASHER	HOT DIP ASHTO M232 CLASS / ASTM A163 CLASS C / ASTM F2329 C OR MECHANICAL GALVANIZE TO ASHTO M298 CLASS 55 TYPE 2 / A307 GRADE 2 UNC / ASTM F1554 GRADE 36	3/4" DIA.
N3	THREE BEAM RAIL TERMINAL - MECHANICAL OR ADHESIVE ANCHOR	MINIMUM MECHANICAL OR ADHESIVE ANCHOR STRENGTH REQUIREMENTS: ULTIMATE TENSILE LOAD 17.9 KIPS AND ULTIMATE SHEAR LOAD 21.96 KIPS. SEE 603.2 AND 603.3.1.2 OF THE WISCONSIN STANDARD SPECIFICATIONS FOR MORE INFORMATION ON ADHESIVE ANCHORS.	
P1	THREE BEAM RAIL CONNECTION - BOLT	HOT DIP ASHTO M232 CLASS / ASTM A163 CLASS C / ASTM F2329 C OR MECHANICAL GALVANIZE TO ASHTO M298 CLASS 55 TYPE 2 / A307 GRADE 2 UNC / ASTM F1554 GRADE 36	3/4" DIA.
P2	THREE BEAM RAIL CONNECTION - WASHER	HOT DIP ASHTO M232 CLASS / ASTM A163 CLASS C / ASTM F2329 C OR MECHANICAL GALVANIZE TO ASHTO M298 CLASS 55 TYPE 2 / A307 GRADE 2 UNC / ASTM F1554 GRADE 36	3/4" DIA.
P3	THREE BEAM RAIL CONNECTION - MECHANICAL OR ADHESIVE ANCHOR	MINIMUM MECHANICAL OR ADHESIVE ANCHOR STRENGTH REQUIREMENTS: ULTIMATE TENSILE LOAD 17.9 KIPS AND ULTIMATE SHEAR LOAD 21.96 KIPS. SEE 603.2 AND 603.3.1.2 OF THE WISCONSIN STANDARD SPECIFICATIONS FOR MORE INFORMATION ON ADHESIVE ANCHORS.	
Q1	BLOCK WOOD	SEE STANDARD SPEC. 614	
R1	CAP - BOLT	HOT DIP ASHTO M232 CLASS / ASTM A163 CLASS C / ASTM F2329 C OR MECHANICAL GALVANIZE TO ASHTO M298 CLASS 55 TYPE 2 / A307 GRADE 2 UNC / ASTM F1554 GRADE 36	3/4" DIA.
R2	CAP - BOLT - WASHER	HOT DIP ASHTO M232 CLASS / ASTM A163 CLASS C / ASTM F2329 C OR MECHANICAL GALVANIZE TO ASHTO M298 CLASS 55 TYPE 2 / A307 GRADE 2 UNC / ASTM F1554 GRADE 36	3/4" DIA.
R3	CAP - BOLT - MECHANICAL ANCHOR	MINIMUM MECHANICAL OR ADHESIVE ANCHOR STRENGTH REQUIREMENTS: ULTIMATE TENSILE LOAD 17.9 KIPS AND ULTIMATE SHEAR LOAD 21.96 KIPS. SEE 603.2 AND 603.3.1.2 OF THE WISCONSIN STANDARD SPECIFICATIONS FOR MORE INFORMATION ON ADHESIVE ANCHORS.	12 GAUGE
S1	CAP 42-INCH TOP PLATE	ASTM A163, ASTM A163, ASTM A36 MIN. STRENGTH 36 KSI, OR ASTM A572 MAX STRENGTH 50 KSI, OR ASTM A575 MAX STRENGTH 50 KSI, OR ASTM A692 MAX STRENGTH 50 KSI, OR ASTM A709	12 GAUGE
S2	CAP 42-INCH END PLATE	ASTM A163, ASTM A163, ASTM A36 MIN. STRENGTH 36 KSI, OR ASTM A572 MAX STRENGTH 50 KSI, OR ASTM A575 MAX STRENGTH 50 KSI, OR ASTM A692 MAX STRENGTH 50 KSI, OR ASTM A709	12 GAUGE
S3	CAP 42-INCH SIDE PLATE	ASTM A163, ASTM A163, ASTM A36 MIN. STRENGTH 36 KSI, OR ASTM A572 MAX STRENGTH 50 KSI, OR ASTM A575 MAX STRENGTH 50 KSI, OR ASTM A692 MAX STRENGTH 50 KSI, OR ASTM A709	12 GAUGE
S4	CAP 42-INCH GUSSET 1	ASTM A163, ASTM A163, ASTM A36 MIN. STRENGTH 36 KSI, OR ASTM A572 MAX STRENGTH 50 KSI, OR ASTM A575 MAX STRENGTH 50 KSI, OR ASTM A692 MAX STRENGTH 50 KSI, OR ASTM A709	12 GAUGE
S5	CAP 42-INCH GUSSET 2	ASTM A163, ASTM A163, ASTM A36 MIN. STRENGTH 36 KSI, OR ASTM A572 MAX STRENGTH 50 KSI, OR ASTM A575 MAX STRENGTH 50 KSI, OR ASTM A692 MAX STRENGTH 50 KSI, OR ASTM A709	12 GAUGE
S6	CAP 42-INCH GUSSET 3	ASTM A163, ASTM A163, ASTM A36 MIN. STRENGTH 36 KSI, OR ASTM A572 MAX STRENGTH 50 KSI, OR ASTM A575 MAX STRENGTH 50 KSI, OR ASTM A692 MAX STRENGTH 50 KSI, OR ASTM A709	12 GAUGE
S7	CAP 42-INCH GUSSET 4	ASTM A163, ASTM A163, ASTM A36 MIN. STRENGTH 36 KSI, OR ASTM A572 MAX STRENGTH 50 KSI, OR ASTM A575 MAX STRENGTH 50 KSI, OR ASTM A692 MAX STRENGTH 50 KSI, OR ASTM A709	12 GAUGE

Addendum No. 01
ID 5100-01-60
Added Sheet 131M
December 8, 2023

CONCRETE BARRIER
TEMPORARY PRECAST,
12" - 6"

STATE OF WISCONSIN
DEPARTMENT OF TRANSPORTATION 131M

BILL OF MATERIALS - CONCRETE BARRIER PRECAST

PART	DESCRIPTION	MATERIALS SPECIFICATIONS	NOTES
T1	CAP 56-INCH TOP PLATE	ASHTO M11 / ASTM A193 A95 MIN. STRENGTH 98 KSI OR ASTM A529 MAX. STRENGTH 50 KSI OR ASTM A922 MAX. STRENGTH 50 KSI	12 GAUGE
T2	CAP 56-INCH END PLATE	ASHTO M11 / ASTM A193 A95 MIN. STRENGTH 98 KSI OR ASTM A529 MAX. STRENGTH 50 KSI OR ASTM A922 MAX. STRENGTH 50 KSI	12 GAUGE
T3	CAP 56-INCH SIDE PLATE 1	ASHTO M11 / ASTM A193 A95 MIN. STRENGTH 98 KSI OR ASTM A529 MAX. STRENGTH 50 KSI OR ASTM A922 MAX. STRENGTH 50 KSI	12 GAUGE
T4	CAP 56-INCH SIDE PLATE 2	ASHTO M11 / ASTM A193 A95 MIN. STRENGTH 98 KSI OR ASTM A529 MAX. STRENGTH 50 KSI OR ASTM A922 MAX. STRENGTH 50 KSI	12 GAUGE
T5	CAP 56-INCH GUSSET 1	ASHTO M11 / ASTM A193 A95 MIN. STRENGTH 98 KSI OR ASTM A529 MAX. STRENGTH 50 KSI OR ASTM A922 MAX. STRENGTH 50 KSI	12 GAUGE
T6	CAP 56-INCH GUSSET 2	ASHTO M11 / ASTM A193 A95 MIN. STRENGTH 98 KSI OR ASTM A529 MAX. STRENGTH 50 KSI OR ASTM A922 MAX. STRENGTH 50 KSI	12 GAUGE
T7	CAP 56-INCH GUSSET 3	ASHTO M11 / ASTM A193 A95 MIN. STRENGTH 98 KSI OR ASTM A529 MAX. STRENGTH 50 KSI OR ASTM A922 MAX. STRENGTH 50 KSI	12 GAUGE
T8	CAP 42-INCH GUSSET 4	ASHTO M11 / ASTM A193 A95 MIN. STRENGTH 98 KSI OR ASTM A529 MAX. STRENGTH 50 KSI OR ASTM A922 MAX. STRENGTH 50 KSI	12 GAUGE
T9	CAP 42-INCH GUSSET 5	ASHTO M11 / ASTM A193 A95 MIN. STRENGTH 98 KSI OR ASTM A529 MAX. STRENGTH 50 KSI OR ASTM A922 MAX. STRENGTH 50 KSI	12 GAUGE
T10	CAP 42-INCH GUSSET 6	ASHTO M11 / ASTM A193 A95 MIN. STRENGTH 98 KSI OR ASTM A529 MAX. STRENGTH 50 KSI OR ASTM A922 MAX. STRENGTH 50 KSI	12 GAUGE
T11	CAP 42-INCH GUSSET 7	ASHTO M11 / ASTM A193 A95 MIN. STRENGTH 98 KSI OR ASTM A529 MAX. STRENGTH 50 KSI OR ASTM A922 MAX. STRENGTH 50 KSI	12 GAUGE
T12	CAP 42-INCH GUSSET 8	ASHTO M11 / ASTM A193 A95 MIN. STRENGTH 98 KSI OR ASTM A529 MAX. STRENGTH 50 KSI OR ASTM A922 MAX. STRENGTH 50 KSI	12 GAUGE
T13	CAP 42-INCH GUSSET 9	ASHTO M11 / ASTM A193 A95 MIN. STRENGTH 98 KSI OR ASTM A529 MAX. STRENGTH 50 KSI OR ASTM A922 MAX. STRENGTH 50 KSI	12 GAUGE
T14	CAP 42-INCH GUSSET 10	ASHTO M11 / ASTM A193 A95 MIN. STRENGTH 98 KSI OR ASTM A529 MAX. STRENGTH 50 KSI OR ASTM A922 MAX. STRENGTH 50 KSI	12 GAUGE
T15	CAP 42-INCH GUSSET 11	ASHTO M11 / ASTM A193 A95 MIN. STRENGTH 98 KSI OR ASTM A529 MAX. STRENGTH 50 KSI OR ASTM A922 MAX. STRENGTH 50 KSI	12 GAUGE
T16	CAP 42-INCH GUSSET 12	ASHTO M11 / ASTM A193 A95 MIN. STRENGTH 98 KSI OR ASTM A529 MAX. STRENGTH 50 KSI OR ASTM A922 MAX. STRENGTH 50 KSI	12 GAUGE
U1	GAP STIFFENER	ASHTO M11 / ASTM A193 A95 MIN. STRENGTH 98 KSI OR ASTM A529 MAX. STRENGTH 50 KSI OR ASTM A922 MAX. STRENGTH 50 KSI	
U2	GAP STIFFENER -CONNECTOR PLATE 1	ASHTO M11 / ASTM A193 A95 MIN. STRENGTH 98 KSI OR ASTM A529 MAX. STRENGTH 50 KSI OR ASTM A922 MAX. STRENGTH 50 KSI	
U3	GAP STIFFENER -CONNECTOR PLATE 2	ASHTO M11 / ASTM A193 A95 MIN. STRENGTH 98 KSI OR ASTM A529 MAX. STRENGTH 50 KSI OR ASTM A922 MAX. STRENGTH 50 KSI	

PART	DESCRIPTION	MATERIALS SPECIFICATIONS	NOTES
V1	THREE BEAM RAIL TERMINAL MECHANICAL ANCHOR OR ADHESIVE ANCHOR	MINIMUM MECHANICAL OR ADHESIVE ANCHOR STRENGTH REQUIREMENTS ULTIMATE TENSILE TO LOAD KIPES AND BE SHEAR LOAD 2.15 IS. SEE A322 AND A323 FOR DETAILS OF ANCHORS. WISCONSIN STANDARD SPECIFICATIONS FOR MORE INFORMATION ON ADHESIVE ANCHORS.	3/4" DIA.
V2	GAP STIFFENER - BOLT - NUT	HOT DIP ASHTO M232 CLASS / ASTM A153 CLASS C / ASTM F2329 C OR MECHANICAL GALVANIZE TO ASHTO M298 CLASS 55 TYPE 2 / ASTM B986 CLASS 55 TYPE 1 UNC OVER CAP NUTS AS SPECIFIED IN AASHTO M281 A 563 HEAVY HEX HEAD / ASTM A563DH OR SAE J429 GRADE 5	
W1	TOE PLATE	ASHTO M11 / ASTM A193 A95 MIN. STRENGTH 98 KSI OR ASTM A529 MAX. STRENGTH 50 KSI OR ASTM A922 MAX. STRENGTH 50 KSI	
X1	TOE PLATE - CONNECTION BOLT	HOT DIP ASHTO M232 CLASS / ASTM A153 CLASS C / ASTM F2329 C OR MECHANICAL GALVANIZE TO ASHTO M298 CLASS 55 TYPE 2 / ASTM B986 CLASS 55 TYPE 1 UNC HEAVY HEX HEAD OR ASHTO M180 HEAD / ASTM F3125 GRADE A325 TYPE 1 HEAVY HEX HEAD OR SAE J429 GRADE 5 HEAVY HEX HEAD / ASTM A449 TYPE 1 HEAVY HEX HEAD. BOLTS MAY BE FULLY THREADED. PROVIDE ENOUGH THREADING FOR PROPER TIGHTENING OF BOLT.	3/4" DIA.
X2	TOE PLATE - CONNECTION BOLT - WASHER	HOT DIP ASHTO M232 CLASS / ASTM A153 CLASS C / ASTM F2329 C OR MECHANICAL GALVANIZE TO ASHTO M298 CLASS 55 TYPE 2 / ASTM B986 CLASS 55 TYPE 2 F438 TYPE 1 (HARDEN WASHER ONLY)	
X3	TOE PLATE - CONNECTION BOLT - NUT	HOT DIP ASHTO M232 CLASS / ASTM A153 CLASS C / ASTM F2329 C OR MECHANICAL GALVANIZE TO ASHTO M298 CLASS 55 TYPE 2 / ASTM B986 CLASS 55 UNC OVER TAP NUTS AS SPECIFIED IN AASHTO 281 / ASTM A 563 HEAVY HEX HEAD ASTM A963DH OR SAE J985 GRADE 5	

Addendum No. 01
ID 5100-01-60
Added Sheet 131N
December 8, 2023

**CONCRETE BARRIER
TEMPORARY PRECAST,
12' - 6"**

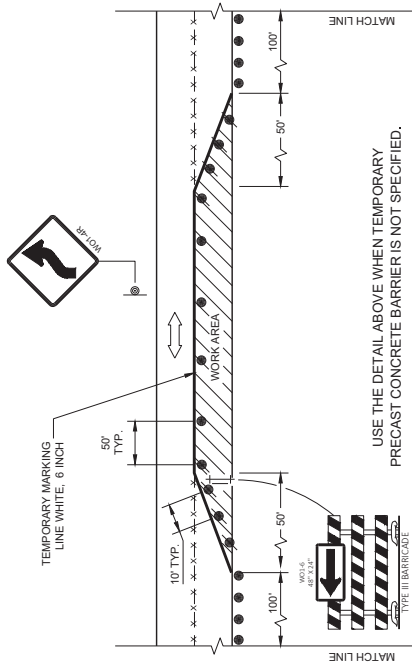
STATE OF WISCONSIN
DEPARTMENT OF TRANSPORTATION

APPROVED
DATE
February 2023
RST
ROADWAY SAFETY DIVISION
UNIT SUPERVISOR
PAPA

131N

GENERAL NOTES

- 1 THE EXACT NUMBERS, LOCATION, AND SPACING OF ALL SIGNS AND DEVICES SHALL BE ADJUSTED TO FIT FIELD CONDITIONS AS APPROVED BY THE ENGINEER.
- 2 THE SPACING BETWEEN TRAFFIC CONTROL SIGNS SHOULD BE ADJUSTED TO NOT CONFLICT WITH AND TO PROVIDE A MINIMUM OF 200 FEET (500 FEET DESIRABLE) CLEARANCE TO EXISTING SIGNS THAT WILL REMAIN IN PLACE.
- 3 THIS LANE CLOSURE IS TYPICAL FOR CLOSING RIGHT LANE - REVERSE FOR CLOSING LEFT LANE.
- 4 ALL SIGNS ARE 48" X 48" UNLESS OTHERWISE NOTED.
- 5 "WO" IS THE SAME AS "W" EXCEPT THE BACKGROUND IS ORANGE.
- 6 ANY SIGNS TEMPORARY OR EXISTING, WHICH CONFLICT WITH TRAFFIC CONTROL, "IN USE" SHALL BE REMOVED OR COVERED AS NEEDED OR AS APPROVED BY THE ENGINEER.
- 7 REMOVE PAVEMENT MARKING AND PLACE TEMPORARY PAVEMENT MARKING LINES IF THE CLOSURE IS TO BE IN PLACE FOR 4 OR MORE CONTINUOUS DAYS AND NIGHTS.
- 8 INSTALL OVERHEAD TEMPORARY SIGNAL HEADS ABOVE THE MIDDLE OF THE TRAVEL LANE THEY ARE CONTROLLING.
- 9 500 FOOT SPACING SHOWN IS FOR ROADWAYS WITH A PRE-CONSTRUCTION REGULATORY SPEED LIMIT OF 45 MPH OR MORE. FOR 35 - 40 MPH, USE 350 FOOT TYPICAL SPACING. FOR 25 - 30 MPH, USE 200 FOOT TYPICAL SPACING.
- 10 USE 300 FOOT SPACING IF THE PRE-CONSTRUCTION REGULATORY SPEED IS 35 MPH OR LESS.
- 11 DIMENSION DETERMINED BY CBTP, TAPER FROM EDGE LINE TO TANGENT SECTION OF THE ROAD.
- 12 TEMPORARY PAVEMENT MARKING LINE, 18 INCH WHITE STOP LINE.
- 13 700 FOOT TEMPORARY PAVEMENT MARKING LINE, 6 INCH DOUBLE YELLOW - WHEN THE DISTANCE FOR THE PRECEDING NO - PASSING ZONE IS LESS THAN THE MINIMUM DISTANCE BETWEEN ZONES AS INDICATED IN THE SPECIFICATIONS, THE TWO ZONES SHALL BE CONNECTED.
- 14 SEE SDD 15D02 - SHEET "F" FOR ADVANCED WIDTH RESTRICTION SIGNING.



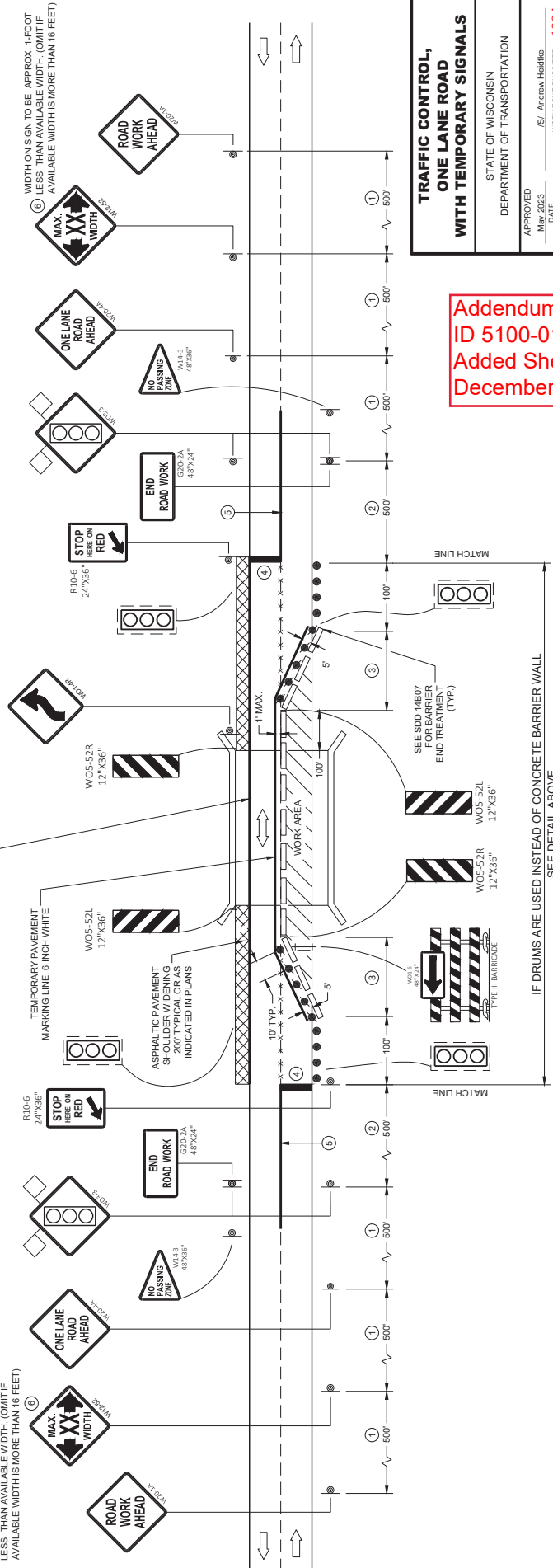
USE THE DETAIL ABOVE WHEN TEMPORARY PRECAST CONCRETE BARRIER IS NOT SPECIFIED.

- LEGEND**
- TYPE III BARRICADE WITH ATTACHED SIGN
 - SIGN ON PERMANENT SUPPORT
 - TRAFFIC CONTROL DRUM WITH TYPE "C" STEADY BURN LIGHT
 - TRAFFIC CONTROL DRUM
 - FLAGS, 16" X 16" MIN. (ORANGE)
 - REMOVING PAVEMENT MARKING
 - DIRECTION OF TRAFFIC
 - ASPHALTIC PAVEMENT WIDENING
 - CONCRETE BARRIER TEMPORARY PRECAST
 - TEMPORARY SIGNAL - SEE SDD 09G02 FOR EXACT PLACEMENT.

TEMPORARY PAVEMENT MARKING LINE, 6 INCH WHITE STOP LINE AND OFFSET THE TEMPORARY EDGE LINE IF THE DISTANCE FROM THE EDGE LINE TO CONCRETE BARRIER WALL IS LESS THAN 9 FEET.

TEMPORARY PAVEMENT MARKING LINE, 6 INCH WHITE STOP LINE AND OFFSET THE TEMPORARY EDGE LINE IF THE DISTANCE FROM THE EDGE LINE TO CONCRETE BARRIER WALL IS LESS THAN 9 FEET.

WIDTH ON SIGN TO BE APPROX. 1-FOOT LESS THAN AVAILABLE WIDTH. (OMIT IF AVAILABLE WIDTH IS MORE THAN 16 FEET)



IF DRUMS ARE USED INSTEAD OF CONCRETE BARRIER WALL SEE DETAIL ABOVE

**TRAFFIC CONTROL,
ONE LANE ROAD
WITH TEMPORARY SIGNALS**

STATE OF WISCONSIN
DEPARTMENT OF TRANSPORTATION

APPROVED _____ DATE _____
/S/ Andrew Hertling
WORK ZONE ENGINEER 199A

Addendum No. 01
ID 5100-01-60
Added Sheet 199A
December 8, 2023



Proposal Schedule of Items

Proposal ID: 20231212006 Project(s): 5100-01-60

Federal ID(s): WISC 2024057

SECTION: 0001 Contract Items

Alt Set ID: Alt Mbr ID:

Proposal Line Number	Item ID Description	Approximate Quantity and Units	Unit Price	Bid Amount
0002	201.0105 Clearing	8.000 STA	_____.	_____.
0004	201.0205 Grubbing	8.000 STA	_____.	_____.
0006	203.0335 Debris Containment Over Waterway (structure) 01. B-62-63	1.000 EACH	_____.	_____.
0008	204.0110 Removing Asphaltic Surface	1,369.000 SY	_____.	_____.
0010	204.0115 Removing Asphaltic Surface Butt Joints	216.000 SY	_____.	_____.
0012	204.0120 Removing Asphaltic Surface Milling	248,893.000 SY	_____.	_____.
0014	204.0150 Removing Curb & Gutter	4,245.000 LF	_____.	_____.
0016	204.0165 Removing Guardrail	23,767.000 LF	_____.	_____.
0018	211.0400 Prepare Foundation for Asphaltic Shoulders	951.000 STA	_____.	_____.
0020	213.0100 Finishing Roadway (project) 01. 5100-01-60	1.000 EACH	_____.	_____.
0022	305.0110 Base Aggregate Dense 3/4-Inch	3,408.000 TON	_____.	_____.
0024	455.0605 Tack Coat	12,792.000 GAL	_____.	_____.
0026	460.0105.S HMA Percent Within Limits (PWL) Test Strip Volumetrics	1.000 EACH	_____.	_____.
0028	460.0110.S HMA Percent Within Limits (PWL) Test Strip Density	2.000 EACH	_____.	_____.
0030	460.2005 Incentive Density PWL HMA Pavement	18,340.000 DOL	1.00000	18,340.00



Proposal Schedule of Items

Proposal ID: 20231212006 Project(s): 5100-01-60

Federal ID(s): WISC 2024057

SECTION: 0001 Contract Items

Alt Set ID: Alt Mbr ID:

Proposal Line Number	Item ID Description	Approximate Quantity and Units	Unit Price	Bid Amount
0032	460.2007 Incentive Density HMA Pavement Longitudinal Joints	39,720.000 DOL	1.00000	39,720.00
0034	460.2010 Incentive Air Voids HMA Pavement	28,650.000 DOL	1.00000	28,650.00
0036	460.5224 HMA Pavement 4 LT 58-28 S	28,578.000 TON	_____.	_____.
0038	465.0105 Asphaltic Surface	310.000 TON	_____.	_____.
0040	465.0120 Asphaltic Surface Driveways and Field Entrances	307.000 TON	_____.	_____.
0042	465.0560 Asphaltic Rumble Strips, Centerline	11,066.000 LF	_____.	_____.
0044	502.3200 Protective Surface Treatment	25.000 SY	_____.	_____.
0046	505.0600 Bar Steel Reinforcement HS Coated Structures	1,242.000 LB	_____.	_____.
0048	509.1500 Concrete Surface Repair	660.000 SF	_____.	_____.
0050	601.0553 Concrete Curb & Gutter 4-Inch Sloped 36-Inch Type D	4,169.000 LF	_____.	_____.
0052	601.0576 Concrete Curb & Gutter 4-Inch Sloped 30-Inch Type J	76.000 LF	_____.	_____.
0054	602.0405 Concrete Sidewalk 4-Inch	124.000 SF	_____.	_____.
0056	602.3010 Concrete Surface Drains	3.000 CY	_____.	_____.
0058	614.0010 Barrier System Grading Shaping Finishing	23.000 EACH	_____.	_____.
0060	614.0400 Adjusting Steel Plate Beam Guard	1,281.000 LF	_____.	_____.



Proposal Schedule of Items

Proposal ID: 20231212006 Project(s): 5100-01-60

Federal ID(s): WISC 2024057

SECTION: 0001 Contract Items

Alt Set ID: Alt Mbr ID:

Proposal Line Number	Item ID Description	Approximate Quantity and Units	Unit Price	Bid Amount
0062	614.2300 MGS Guardrail 3	18,151.000 LF	_____.	_____.
0064	614.2330 MGS Guardrail 3 K	3,976.000 LF	_____.	_____.
0066	614.2350 MGS Guardrail Short Radius	1,089.000 LF	_____.	_____.
0068	614.2500 MGS Thrie Beam Transition	312.000 LF	_____.	_____.
0070	614.2610 MGS Guardrail Terminal EAT	53.000 EACH	_____.	_____.
0072	614.2620 MGS Guardrail Terminal Type 2	6.000 EACH	_____.	_____.
0074	614.2630 MGS Guardrail Short Radius Terminal	5.000 EACH	_____.	_____.
0076	618.0100 Maintenance and Repair of Haul Roads (project) 01. 5100-01-60	1.000 EACH	_____.	_____.
0078	619.1000 Mobilization	1.000 EACH	_____.	_____.
0080	624.0100 Water	56.000 MGAL	_____.	_____.
0082	628.1504 Silt Fence	2,603.000 LF	_____.	_____.
0084	628.1520 Silt Fence Maintenance	2,603.000 LF	_____.	_____.
0086	628.1905 Mobilizations Erosion Control	2.000 EACH	_____.	_____.
0088	628.1910 Mobilizations Emergency Erosion Control	2.000 EACH	_____.	_____.
0090	628.2004 Erosion Mat Class I Type B	1,294.000 SY	_____.	_____.
0092	628.2008 Erosion Mat Urban Class I Type B	37.000 SY	_____.	_____.



Proposal Schedule of Items

Proposal ID: 20231212006 Project(s): 5100-01-60

Federal ID(s): WISC 2024057

SECTION: 0001 Contract Items

Alt Set ID: Alt Mbr ID:

Proposal Line Number	Item ID Description	Approximate Quantity and Units	Unit Price	Bid Amount
0094	629.0210 Fertilizer Type B	2.000 CWT	_____.	_____.
0096	630.0120 Seeding Mixture No. 20	39.000 LB	_____.	_____.
0098	630.0200 Seeding Temporary	39.000 LB	_____.	_____.
0100	630.0500 Seed Water	80.000 MGAL	_____.	_____.
0102	638.2102 Moving Signs Type II	75.000 EACH	_____.	_____.
0104	642.5201 Field Office Type C	1.000 EACH	_____.	_____.
0106	643.0300 Traffic Control Drums	19,003.000 DAY	_____.	_____.
0108	643.0420 Traffic Control Barricades Type III	255.000 DAY	_____.	_____.
0110	643.0705 Traffic Control Warning Lights Type A	510.000 DAY	_____.	_____.
0112	643.0715 Traffic Control Warning Lights Type C	6,750.000 DAY	_____.	_____.
0114	643.0900 Traffic Control Signs	1,980.000 DAY	_____.	_____.
0116	643.0920 Traffic Control Covering Signs Type II	15.000 EACH	_____.	_____.
0118	643.1050 Traffic Control Signs PCMS	14.000 DAY	_____.	_____.
0120	643.3165 Temporary Marking Line Paint 6-Inch	129,394.000 LF	_____.	_____.
0122	643.3170 Temporary Marking Line Epoxy 6-Inch	8,057.000 LF	_____.	_____.
0124	643.5000 Traffic Control	1.000 EACH	_____.	_____.



Proposal Schedule of Items

Proposal ID: 20231212006 Project(s): 5100-01-60

Federal ID(s): WISC 2024057

SECTION: 0001 Contract Items

Alt Set ID: Alt Mbr ID:

Proposal Line Number	Item ID Description	Approximate Quantity and Units	Unit Price	Bid Amount
0126	646.2020 Marking Line Epoxy 6-Inch	400.000 LF	_____.	_____.
0128	646.2040 Marking Line Grooved Wet Ref Epoxy 6-Inch	161,938.000 LF	_____.	_____.
0130	646.4040 Marking Line Grooved Wet Ref Epoxy 10-Inch	75.000 LF	_____.	_____.
0132	646.4720 Marking Line Same Day Epoxy 6-Inch	121,337.000 LF	_____.	_____.
0134	646.6120 Marking Stop Line Epoxy 18-Inch	72.000 LF	_____.	_____.
0136	648.0100 Locating No-Passing Zones	15.000 MI	_____.	_____.
0138	650.5500 Construction Staking Curb Gutter and Curb & Gutter	4,245.000 LF	_____.	_____.
0140	650.8000 Construction Staking Resurfacing Reference	79,439.000 LF	_____.	_____.
0142	650.9911 Construction Staking Supplemental Control (project) 01. 5100-01-60	1.000 EACH	_____.	_____.
0144	690.0150 Sawing Asphalt	1,599.000 LF	_____.	_____.
0146	740.0440 Incentive IRI Ride	30,090.000 DOL	1.00000	30,090.00
0148	ASP.1T0A On-the-Job Training Apprentice at \$5.00/HR	800.000 HRS	5.00000	4,000.00
0150	ASP.1T0G On-the-Job Training Graduate at \$5.00/HR	475.000 HRS	5.00000	2,375.00
0152	SPV.0060 Special 01. Safety Grate for Concrete Box Culvert C-62-267	1.000 EACH	_____.	_____.



Proposal Schedule of Items

Proposal ID: 20231212006 Project(s): 5100-01-60

Federal ID(s): WISC 2024057

SECTION: 0001 Contract Items

Alt Set ID: Alt Mbr ID:

Proposal Line Number	Item ID Description	Approximate Quantity and Units	Unit Price	Bid Amount
0154	SPV.0060 Special 02. Cleaning Box Culvert, 4' X 5', STA 726+32	1.000 EACH	_____.	_____.
0156	SPV.0060 Special 03. Cleaning Box Culvert, 6' X 6', STA 446+90	1.000 EACH	_____.	_____.
0158	SPV.0060 Special 04. Cleaning Box Culvert, 5' X 8', STA 460+49	1.000 EACH	_____.	_____.
0160	SPV.0060 Special 05. Rail Post Anchorage Repair	2.000 EACH	_____.	_____.
0162	SPV.0070 Special 01. Sprayed Asphaltic Shoulder Treatment	490.000 GAL	_____.	_____.
0164	SPV.0090 Special 01. Flashing Stainless Steel	102.000 LF	_____.	_____.
0166	SPV.0180 Special 01. Removing Distressed Pavement Milling	12,445.000 SY	_____.	_____.
0168	603.8000 Concrete Barrier Temporary Precast Delivered	360.000 LF	_____.	_____.
0170	603.8125 Concrete Barrier Temporary Precast Installed	720.000 LF	_____.	_____.
0172	614.0905 Crash Cushions Temporary	4.000 EACH	_____.	_____.
0174	643.3150 Temporary Marking Line Removable Tape 4-Inch	720.000 LF	_____.	_____.
0176	643.3850 Temporary Marking Stop Line Removable Tape 18-Inch	22.000 LF	_____.	_____.
0178	646.9010 Marking Removal Line Water Blasting 4-Inch	360.000 LF	_____.	_____.



Proposal Schedule of Items

Proposal ID: 20231212006 Project(s): 5100-01-60

Federal ID(s): WISC 2024057

SECTION: 0001 Contract Items

Alt Set ID: Alt Mbr ID:

Proposal Line Number	Item ID Description	Approximate Quantity and Units	Unit Price	Bid Amount
0180	661.0101 Temporary Traffic Signals for Bridges (structure) 01. B-62-63	1.000 EACH	_____.	_____.
Section: 0001			Total:	_____.
			Total Bid:	_____.

