



Wisconsin Department of Transportation

December 8, 2023

Division of Transportation Systems Development
 Bureau of Project Development
 4822 Madison Yards Way, 4th Floor South
 Madison, WI 53705

Telephone: (608) 266-1631
 Facsimile (FAX): (608) 266-8459

NOTICE TO ALL CONTRACTORS:

**Proposal #08: 5685-00-05, Federal ID
 V of McFarland, Exchange Street
 Farwell St to Sleepy Hollow Road
 Loc Str
 Dane County**

Letting of December 12, 2023

This is Addendum No. 01, which provides for the following:

Special Provisions:

Revised Special Provisions	
Article No.	Description
16	General Provisions for Village of McFarland Sanitary Sewer
17	General Provisions for Village of McFarland Water Main
18	General Provisions for Village Conduit Installation

Added Special Provisions	
Article No.	Description
42	Remove and Reinstall RRFB Crossing System, Item SPV.0060.23
43	Remove and Reinstall Fencing, Item SPV.0090.11

Schedule of Items:

Revised Bid Item Quantities					
Bid Item	Item Description	Unit	Proposal Total Prior to Addendum	Proposal Quantity Change (-)	Proposal Total After Addendum
204.0110	Removing Asphaltic Surface	SY	18700	-18200	500
602.0405	Concrete Sidewalk 4-Inch	SF	33200	465	33665
602.0415	Concrete Sidewalk 6-Inch	SF	6315	450	6765
602.0515	Curb Ramp Detectable Warning Field Natural Patina	SF	272	78	350
602.0810	Concrete Driveway 6-Inch	SY	1350	123	1473
608.0312	Storm Sewer Pipe Reinforced Concrete Class III 12-Inch	LF	1547	16	1563
608.0318	Storm Sewer Pipe Reinforced Concrete Class III 18-Inch	LF	774	8	782
646.6120	Marking Stop Line Epoxy 18-Inch	LF	115	20	135

650.9000	Construction Staking Curb Ramps	EACH	34	1	35
652.0225	Conduit Rigid Nonmetallic Schedule 40 (2")	LF	2540	-180	2360
SPV.0060.01	Inlet Protection Type D-RF	EACH	43	-2	41

Added Bid Item Quantities					
Bid Item	Item Description	Unit	Proposal Total Prior to Addendum	Quantity Added	Proposal Total After Addendum
520.8000	Concrete Collars For Pipe	EACH	0	6	6
602.1500	Concrete Steps	SF	0	15	15
628.1504	Silt Fence	LF	0	230	230
611.0430	Reconstructing Inlets	EACH	0	2	2
652.0225	Conduit Rigid Nonmetallic Schedule 80 (2")	LF	0	80	80
654.0102	Concrete Bases Type 2	EACH	0	18	18
654.0200	Concrete Control Cabinet Bases Type 6	EACH	0	1	1
690.0250	Sawing Concrete	LF	0	1100	1100
SPV.0060.22	Remove and Reinstall RRFB Crossing System	EACH	0	1	1
SPV.0090.11	Remove and Reinstall Fencing	LF	0	80	80

Plan Sheets:

Revised Plan Sheets	
Plan Sheet	Plan Sheet Title (brief description of changes to sheet)
11	Intersection Details (Added details at northern project limits)
17	Curb Ramp Details- Exchange Street/Jaeger Road South (revised ex. Inlet depiction)
24	Curb Ramp Details- Exchange Street/Sure Avenue SE (revised connection to Sure sw)
71	Permanent Signing/Pavement Marking Plan (Added notes for SPV.0060.23)
75	Miscellaneous Quantities (revised to show quantity changes)
76	Miscellaneous Quantities (revised to show quantity changes)
77	Miscellaneous Quantities (revised to show quantity changes)
78	Miscellaneous Quantities (revised to show quantity changes)
80	Miscellaneous Quantities (revised to show quantity changes)
82	Miscellaneous Quantities (revised to show quantity changes)
89	Plan and Profile: Exchange Street (added silt fence)
90	Plan and Profile: Exchange Street (added silt fence, apron, car walk)
91	Plan and Profile: Exchange Street (added sidewalk side street connection, car walk)
92	Plan and Profile: Exchange Street (added apron, sidewalk connection)
94	Plan and Profile: Exchange Street (added car walk, apron)
96	Plan and Profile: Exchange Street (added car walks, aprons)
97	Plan and Profile: Exchange Street (added car walks, aprons)

The responsibility for notifying potential subcontractors and suppliers of these changes remains with the prime contractor.

Sincerely,

Mike Coleman

Proposal Development Specialist
Proposal Management Section

**ADDENDUM NO. 01
5685-00-05
December 8, 2023**

Special Provisions

16. General Provisions for Village of McFarland Sanitary Sewer.

Add the following to the end of this section:

Staking and inspection will be provided and performed by the Village Engineer.

17. General Provisions for Village of McFarland Water Main.

Add the following to the end of this section:

Staking and inspection will be provided and performed by the Village Engineer.

18. General Provisions for Village Conduit Installation.

Add the following to the end of this section:

Staking and inspection of conduit and all street lighting items will be provided and performed by the Village Engineer.

42. Remove and Reinstall RRFB Crossing System, Item SPV.0060.22.

A Description

This work consists of removing and reinstalling existing RRFB pedestrian crossing system at the direction of the engineer.

B (Vacant)

C Construction

At the location noted on the permanent signing and marking plans, the Contractor shall remove the existing pedestrian crossing RRFB system and place the materials at temporary location during construction. Caution shall be used during removal in order to allow for the reinstallation after construction is completed. The temporary placement location will be determined by the engineer. At the conclusion of the project, re-install the pedestrian crossing RRFB system to the original location or a location determined by the engineer.

D Measurement

The department will measure Remove and Reinstall RRFB Crossing System,, Item SPV.0060.23 as per each system, including both signage systems on either side of the crossing, acceptably completed.

E Payment

The department will pay for measured quantities at the contract unit price under the following bid item:

ITEM NUMBER	DESCRIPTION	UNIT
SPV.0060.22	Remove and Reinstall RRFB Crossing System	EACH

Payment is full compensation for removing and temporarily relocating the fencing and placing the fencing in the original location or location determined by the engineer.

43. Remove and Reinstall Fencing, Item SPV.0090.11.

A Description

This work consists of removing and reinstalling existing fencing at the direction of the engineer.

B (Vacant)

C Construction

Where geometric changes to the roadway and grading require that existing fencing be removed, the Contractor shall remove the fencing and place the materials at temporary location during construction. Caution shall be used during removal in order to allow for the reinstallation of the fencing after construction is completed. The temporary placement location will be determined by the engineer. At the conclusion of the project, re-install the fencing to the original location or a location determined by the engineer. Replace fencing materials with like materials if any damage occurs.

D Measurement

The department will measure Remove and Replace Fencing, Item SPV.0060.22 as per lineal foot, acceptably completed.

E Payment

The department will pay for measured quantities at the contract unit price under the following bid item:

ITEM NUMBER	DESCRIPTION	UNIT
SPV.0090.11	Remove and Reinstall Fencing	LF

Payment is full compensation for removing and temporarily relocating the fencing and placing the fencing in the original location or location determined by the engineer.

Schedule of Items

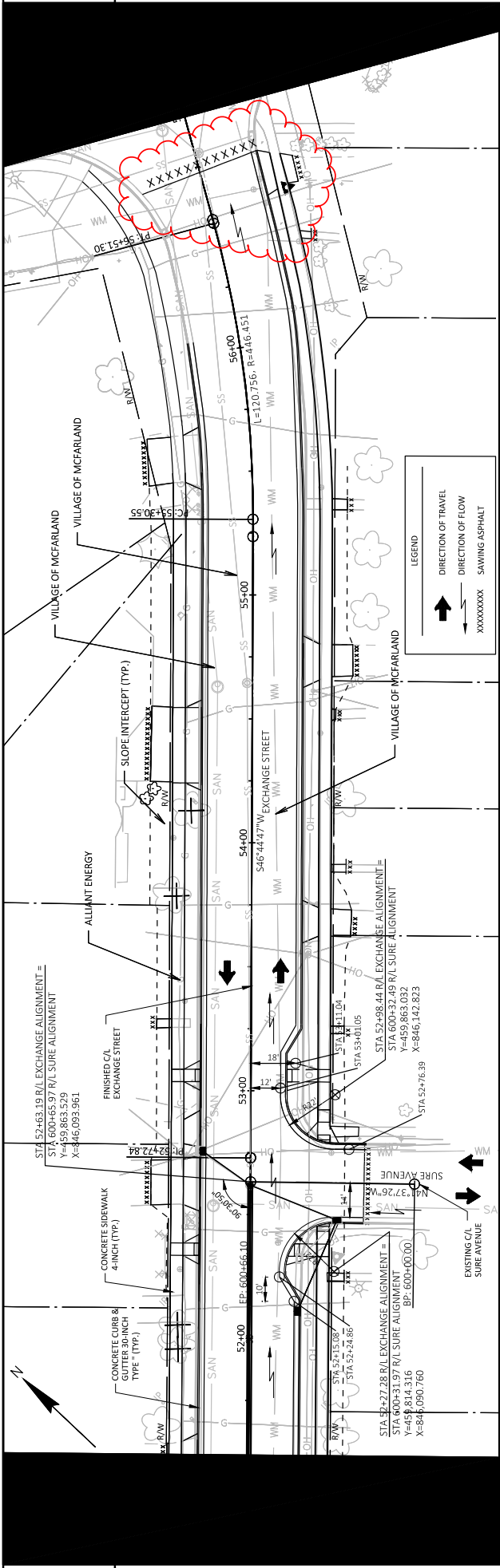
Attached, dated December 8, 2023, are the revised Schedule of Items Pages 1 – 9.

Plan Sheets

The following 8½ x 11-inch sheets are attached and made part of the plans for this proposal:

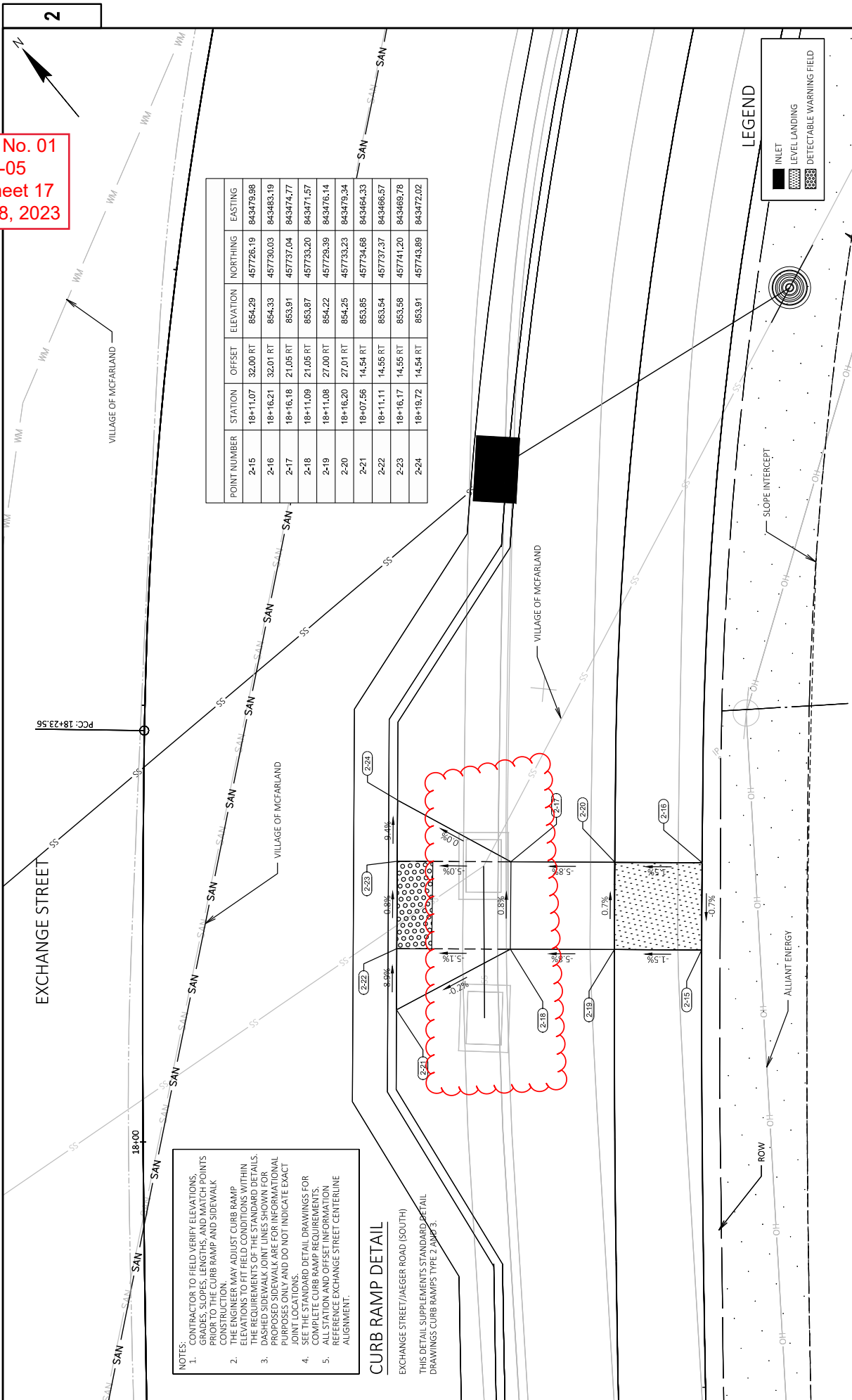
Revised: 11, 17, 24, 71, 75 - 78, 80, 82, 89 - 91, 92, 94, 96, and 97

END OF ADDENDUM



Addendum No. 01
 ID 5685-00-05
 Revised Sheet 11
 December 8, 2023

Addendum No. 01
 ID 5685-00-05
 Revised Sheet 17
 December 8, 2023



POINT NUMBER	STATION	OFFSET	ELEVATION	NORTHING	EASTING
2-15	18+11.07	32.00 RT	864.29	457726.19	843479.98
2-16	18+16.21	32.01 RT	864.33	457730.03	843483.19
2-17	18+16.18	21.05 RT	853.91	457737.04	843474.77
2-18	18+11.09	21.05 RT	853.87	457733.20	843471.57
2-19	18+11.08	27.00 RT	864.22	457729.39	843476.14
2-20	18+16.20	27.01 RT	854.25	457733.23	843479.34
2-21	18+07.56	14.54 RT	853.86	457734.68	843464.33
2-22	18+11.11	14.55 RT	853.54	457737.37	843466.57
2-23	18+16.17	14.55 RT	853.58	457741.20	843469.78
2-24	18+19.72	14.54 RT	853.91	457743.89	843472.02

NOTES:

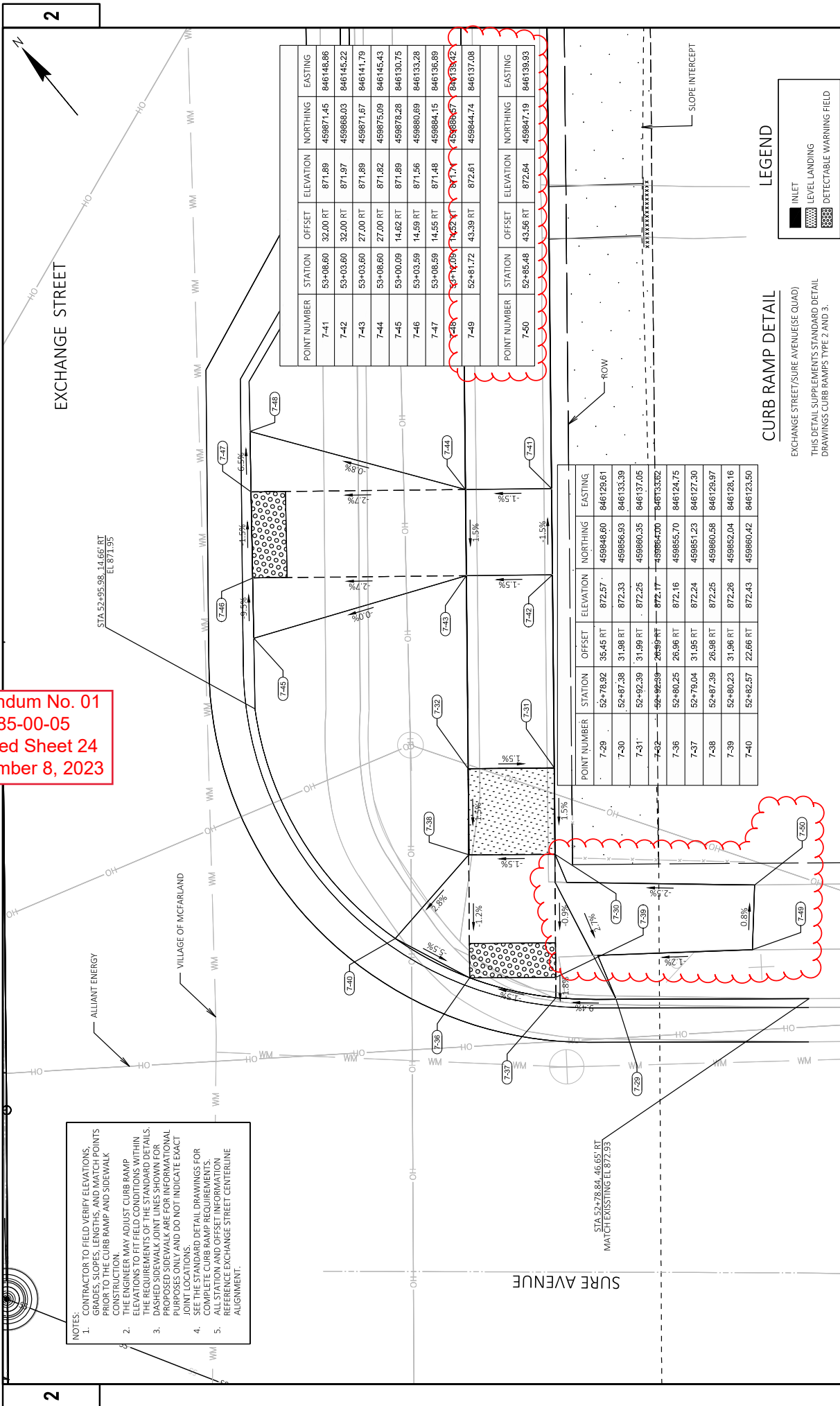
1. CONTRACTOR TO FIELD VERIFY ELEVATIONS, GRADES, SLOPES, LENGTHS, AND MATCH POINTS PRIOR TO THE CURB RAMP AND SIDEWALK CONSTRUCTION.
2. THE ENGINEER MAY ADJUST CURB RAMP ELEVATIONS TO FIT FIELD CONDITIONS WITHIN THE REQUIREMENTS OF THE STANDARD DETAILS.
3. DASHED SIDEWALK JOINT LINES SHOWN FOR PROPOSED SIDEWALK ARE FOR INFORMATIONAL PURPOSES ONLY AND DO NOT INDICATE EXACT JOINT LOCATIONS.
4. THIS DRAWING IS A DETAIL DRAWING FOR CURB RAMP CONSTRUCTION. IT DOES NOT SHOW ALL REQUIREMENTS, DIMENSIONS, OR OFFSETS.
5. ALL STATION AND OFFSET INFORMATION REFERENCE EXCHANGE STREET CENTERLINE ALIGNMENT.

CURB RAMP DETAIL

EXCHANGE STREET/JAEGER ROAD (SOUTH)
 THIS DETAIL SUPPLEMENTS STANDARD DETAIL DRAWINGS CURB RAMP TYPE 2, PART 3.

LEGEND

- INLET
- LEVEL LANDING
- DETECTABLE WARNING FIELD



Addendum No. 01
ID 5685-00-05
Revised Sheet 24
December 8, 2023

- NOTES:**
1. CONTRACTOR TO FIELD VERIFY ELEVATIONS, GRADES, SLOPES, LENGTHS, AND MATCH POINTS PRIOR TO THE CURB RAMP AND SIDEWALK CONSTRUCTION.
 2. THE ENGINEER MAY ADJUST CURB RAMP ELEVATIONS TO FIT FIELD CONDITIONS WITHIN THE REQUIREMENTS OF THE STANDARD DETAILS.
 3. PROPOSED SIDEWALK ARE FOR INFORMATIONAL PURPOSES ONLY AND DO NOT INDICATE EXACT JOINT LOCATIONS.
 4. SEE THE STANDARD DETAIL DRAWINGS FOR COMPLETE CURB RAMP REQUIREMENTS.
 5. ALL STATION AND OFFSET INFORMATION REFERENCE EXCHANGE STREET CENTERLINE ALIGNMENT.

POINT NUMBER	STATION	OFFSET	ELEVATION	NORTHING	EASTING
7-41	53+08.60	32.00 RT	871.89	459871.45	846148.86
7-42	53+03.60	32.00 RT	871.97	459865.03	846145.22
7-43	53+03.60	27.00 RT	871.89	459871.67	846141.79
7-44	53+08.60	27.00 RT	871.82	459875.09	846145.43
7-45	53+00.09	14.62 RT	871.89	459878.28	846130.75
7-46	53+03.59	14.59 RT	871.56	459880.69	846133.28
7-47	53+08.59	14.55 RT	871.48	459884.15	846136.89
7-48	53+03.09	14.52 RT	871.71	459880.67	846138.42
7-49	52+81.72	43.39 RT	872.61	459844.74	846137.08

POINT NUMBER	STATION	OFFSET	ELEVATION	NORTHING	EASTING
7-50	52+85.48	43.56 RT	872.64	459847.19	846139.93

POINT NUMBER	STATION	OFFSET	ELEVATION	NORTHING	EASTING
7-29	52+78.92	35.45 RT	872.57	459848.60	846129.61
7-30	52+87.38	31.98 RT	872.33	459856.93	846133.39
7-31	52+92.39	31.99 RT	872.25	459860.35	846137.05
7-32	52+95.99	28.99 RT	872.17	459864.70	846135.62
7-36	52+80.25	26.96 RT	872.16	459865.70	846124.75
7-37	52+79.04	31.95 RT	872.24	459851.23	846127.30
7-38	52+87.39	26.98 RT	872.25	459860.38	846129.97
7-39	52+80.23	31.96 RT	872.26	459862.04	846128.16
7-40	52+82.57	22.66 RT	872.43	459860.42	846123.50

LEGEND

- INLET
- LEVEL LANDING
- DETECTABLE WARNING FIELD

CURB RAMP DETAIL

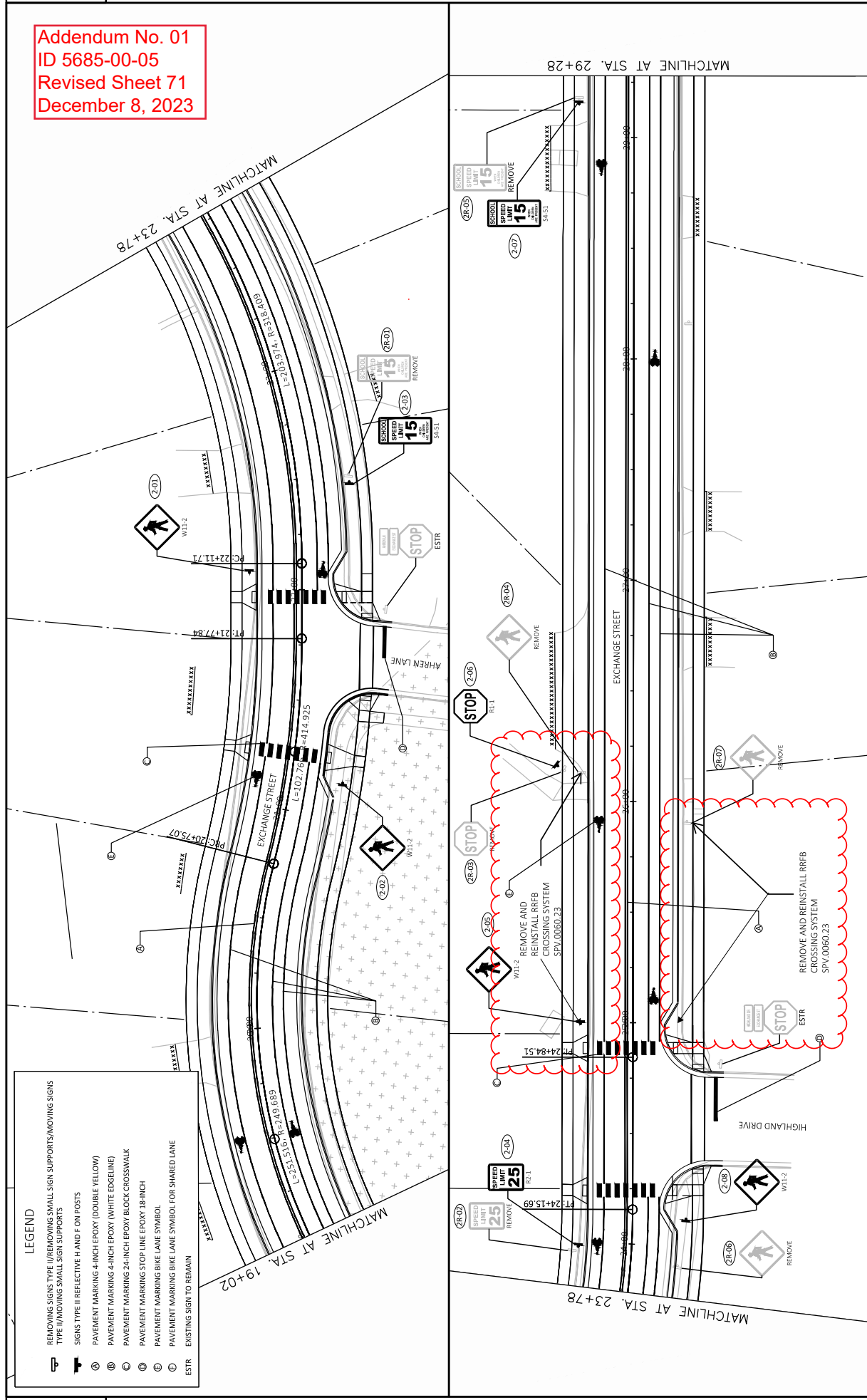
EXCHANGE STREET/SURE AVENUE(SEE QUAD)

THIS DETAIL SUPPLEMENTS STANDARD DETAIL DRAWINGS CURB RAMPS TYPE 2 AND 3.

Addendum No. 01
 ID 5685-00-05
 Revised Sheet 71
 December 8, 2023

LEGEND

	REMOVING SIGNS TYPE II (REMOVING SMALL SIGN SUPPORTS/MOVING SIGNS TYPE I)/MOVING SMALL SIGN SUPPORTS
	SIGNS TYPE II REFLECTIVE H AND F ON PORTS
	PAVEMENT MARKING 4-INCH EPOXY (DOUBLE YELLOW)
	PAVEMENT MARKING 4-INCH EPOXY (WHITE EDGE LINE)
	PAVEMENT MARKING 24-INCH EPOXY BLOCK CROSSWALK
	PAVEMENT MARKING STOP LINE EPOXY 18-INCH
	PAVEMENT MARKING BIKE LANE SYMBOL
	PAVEMENT MARKING BIKE LANE SYMBOL FOR SHARED LANE
	EXISTING SIGN TO REMAIN
	ESTR



PROJECT NO: 5685-00-05
 COUNTY: DANE
 HWY: EXCHANGE STREET
 PERMANENT SIGNING/PAVEMENT MARKING PLAN
 SHEET 71
 E

FILE NAME: J:\JOB\5685\KCP\LAND\MVC-134-M Exchange Street Preliminary Engineering (FILE)\DRAWING\MVC-134 SIGN AND MARKINGS.DWG
 LAYOUT NAME: 02
 PLOT DATE: 10/16/2023 10:58 AM
 PLOT BY: TIM STEVE
 PLOT SCALE: 1 IN.=40 FT
 WISDOT/CADDIS SHEET 44

CLEARING AND GRUBBING

STATION - STATION	LOCATION	EXCHANGE	201.0120 ID	201.0220 ID
12+51 - 55+73	EXCHANGE	555	555	

REMOVING ASPHALTIC SURFACE

STATION - STATION	LOCATION	EXCHANGE	204.0110 SY
12+73.00 - 53+73.00	EXCHANGE	500	500
TOTAL			500

REMOVING CURB & GUTTER

STATION - STATION	LOCATION	LF	204.0150 LF
13+23.20 - 17+70.35	LT	451	
17+86.73 - 55+73.12	LT	3797	
12+42.15 - 21+56.60	RT	931	
21+82.87 - 24+37.56	RT	289	
24+75.23 - 37+75.02	RT	1325	
38+05.17 - 44+96.14	RT	709	
45+29.47 - 52+49.26	RT	746	
52+76.39 - 55+73.13	RT	312	
TOTAL			8560

REMOVING CONCRETE SIDEWALK

STATION - STATION	LOCATION	SY	204.0155 SY
12+42.15 - 21+56.60	RT	440	
21+82.87 - 24+37.56	RT	150	
24+75.23 - 37+75.02	RT	710	
38+05.17 - 44+96.14	RT	300	
45+29.47 - 52+49.26	RT	320	
52+76.39 - 55+73.13	RT	140	
TOTAL			2060

SAWING CONCRETE

STATION	LOCATION	LF	690.0250 LF
12+70	EXCHANGE ST	1100	
TOTAL			1100

STORM SEWER REMOVALS

STATION - STATION	LOCATION	REMOVING INLETS EACH	REMOVING STORM SEWER 12-INCH LF	REMOVING STORM SEWER 15-INCH LF
15+28.03	22.31' RT	1		
15+74.04	19.06' LT	1		
18+07.07	19.57' RT	1		
18+15.93	19.50' RT	1		
24+31.30	22.02' LT	1		
24+35.31	32.72' RT	1		
24+88.13	23.46' RT	1		
24+91.52	21.98' RT	1		
52+32.37	20.01' RT	1		
15+28.03 - 15+37.80	RT		10	
15+37.80 - 15+74.04	RT/LT		54	
17+72.11 - 18+15.93	RT/LT			80
18+07.07 - 18+15.93	RT		8	
18+15.93 - 18+53.82	RT			37
24+31.30 - 24+35.31	RT/LT		54	
24+35.31 - 24+91.52	RT/LT		53	
52+32.37 - 52+47.97	RT		21	
TOTAL			9	200

EXCAVATION COMMON

STATION	- STATION	CUT (2) CY	EBS EXCAVATION (3) CY	COMMON EXCAVATION (1) SELECT	CRUSHED MATERIAL (TON)	UNEXPANDED FILL CY	MASS ORDNATE +/- CY
12+51 -	55+73	14110	1410	312.0110	2610	0	12930
SUBTOTAL		14110	1410	2610	2610	0	12930
TOTALS		15620	1410	2610	0	0	0

Notes:

- 1) Common Excavation is the sum of the Cut and EBS Excavation columns. Item number 205.0100
- 2) Cut volume includes concrete and asphaltic surface material
- 3) All EBS material is to be wasted offsite. EBS quantity estimated using 10.0% of the cut volume.
- 4) The Mass Ordinate + or - Qty calculated for the Division. Negative indicates a shortage of material within
- 5) EBS Excavation to be backfilled with Select Crushed Material.

Addendum No. 01
ID 5685-00-05
Revised Sheet 75
December 8, 2023

ALL BID ITEMS CATEGORY 0010 UNLESS OTHERWISE NOTED

BASE AGGREGATE DENSE

STATION	STATION	305.0120	305.0130	624.0100
1 1/4-INCH	3 INCH	WATER		
12+51 - 55+73	0010	0020	0010	0020
	TON	TON	MGAL	MGAL
	7730	1040	12700	1710
	15		180	20
	DRIVEWAYS			0
	7745	1040	12700	1710
	8785	14410	180	20
	TOTAL			

HMA PAVEMENT

STATION	STATION	455.0605	460.5224	460.5225
TACK COAT	HMA PAVEMENT 4 LT 58-28 S	HMA PAVEMENT 5 LT 58-28 S		
12+51 - 55+73	0020	0010	0020	0020
	GAL	TON	TON	TON
	470	3080	420	210
	70	1540	1710	180
	3080	420	1750	210
	70	1540	1750	210
	TOTAL			

CONCRETE CURB & GUTTER

STATION	STATION	601.0411	601.0600	650.5500
CONCRETE CURB & GUTTER 30-INCH TYPE D	CONCRETE CURB PEDESTRIAN	CONCRETE CURB CONSTRUCTION STAKING	CONCRETE CURB CONSTRUCTION STAKING	CONCRETE CURB CONSTRUCTION STAKING
12+76.70 - 17+67.02	496	496	496	496
	LF	LF	LF	LF
17+83.80 - 55+73.13	3795	3795	3905	3905
	RT	RT	RT	RT
12+42.15 - 21+56.60	943	943	943	943
	RT	RT	RT	RT
21+82.89 - 24+37.58	302	302	302	302
	RT	RT	RT	RT
24+75.25 - 37+75.05	1341	1341	1341	1341
	RT	RT	RT	RT
38+05.17 - 44+97.87	193	193	193	193
	RT	RT	RT	RT
45+26.84 - 52+49.26	779	779	779	779
	RT	RT	RT	RT
52+76.39 - 55+73.13	319	319	319	319
	RT	RT	RT	RT
	TOTAL	8068	8878	8878

CONCRETE SIDEWALK

STATION	STATION	602.0405	602.0415	650.9500
CONCRETE SIDEWALK 4-INCH	CONCRETE SIDEWALK 6-INCH	CONSTRUCTION STAKING	CONSTRUCTION STAKING	CONSTRUCTION STAKING
17+83.80 - 55+73.13	16000	3600	3600	3600
	LF	LF	LF	LF
12+42.15 - 21+56.60	3725	660	660	660
	RT	RT	RT	RT
21+82.89 - 24+37.58	1250	70	70	70
	RT	RT	RT	RT
24+75.25 - 37+75.05	5520	900	900	900
	RT	RT	RT	RT
38+05.17 - 44+97.87	2600	860	860	860
	RT	RT	RT	RT
45+26.84 - 52+49.26	3070	450	450	450
	RT	RT	RT	RT
52+76.39 - 56+72.07	1500	225	225	225
	RT	RT	RT	RT
	UNDISTRIBUTED	-	-	1
	TOTAL	33665	6765	1

Addendum No. 01
ID 5685-00-05
Revised Sheet 76
December 8, 2023

ADJUSTING MANHOLE COVERS

STATION	LOCATION	EACH
38+53.53	1' RT	1
42+01.33	1' RT	1
45+69.17	2' RT	1
48+72.20	1' RT	1
54+64.47	2' LT	1
58+67.48	22' RT	1
7+65.62	8' LT	1
19+66.63	10' LT	1
21+73.69	12' LT	1
22+65.42	2' LT	1
25+01.80	1' LT	1
26+43.42	2' LT	1
28+98.35	3' LT	1
33+01.29	4' LT	1
36+40.94	12' LT	1
38+77.12	14' LT	1
41+32.09	12' LT	1
45+11.30	18' LT	1
48+62.38	16' LT	1
52+54.40	15' LT	1
54+63.84	14' LT	1
	TOTAL	21

CONCRETE STEPS

STATION	LOCATION	SF
18+49	LT	5
23+39	LT	5
36+72	LT	5
	TOTAL	15

ASPHALTIC SURFACE DRIVEWAYS AND FIELD ENTRANCES

STATION	STATION	LOCATION	TON
17+86.73 - 55+73.12	LT	53	53
21+82.87 - 24+37.56	RT	0	0
24+75.23 - 37+75.02	RT	0	0
38+05.17 - 44+96.14	RT	3	3
45+29.47 - 52+49.26	RT	2	2
52+76.39 - 55+73.13	RT	2	2
	TOTAL	66	66

CONCRETE DRIVEWAY 6-INCH

STATION	STATION	LOCATION	SY
13+23.20 - 17+70.35	LT	45	45
17+86.73 - 55+73.12	LT	550	550
12+42.15 - 21+56.60	RT	258	258
21+82.87 - 24+37.56	RT	25	25
24+75.23 - 37+75.02	RT	230	230
38+05.17 - 44+96.14	RT	215	215
45+29.47 - 52+49.26	RT	100	100
52+76.39 - 56+72.07	RT	50	50
	TOTAL	1473	1473

MISCELLANEOUS QUANTITIES

33665	6765	1
TOTAL		

PROJECT NO: 5685-00-05
COUNTY: DANF
HIGHWAY: EXCHANGE STREET

FILE NAME: I:\PROJECTS\5685-00-05\EXCHANGE STREET PRELIMINARY ENGINEERING\FILEDRAWS\DWG 134 MISCELLANEOUS QUANTITIES.DWG
PLOT DATE: 12/26/2023 4:00:59 PM
PLOT BY: NIKOLAUS DOMINA

SHEET 76
UNOFF: 06-SHEET2

Addendum No. 01
ID 5685-00-05
Revised Sheet 77
December 8, 2023

ALL BID ITEMS CATEGORY 0010 UNLESS OTHERWISE NOTED

RECONSTRUCTING INLETS

STATION	STRUCTURE	EACH
21+56.30	EX. 30	1
21+84.43	EX. 29	1
	TOTAL	2

STORM SEWER - PIPE

520.8000	608.0312	608.0318
CONCRETE	STORM SEWER	STORM SEWER
COLLARS	PIPE REINFORCED	PIPE REINFORCED
FOR PIPE	CONCRETE CLASS	CONCRETE CLASS
	III 12-INCH	III 18-INCH
STRUCTURE	TO	STRUCTURE
INL-01	-	CB INL MH 01
CB INL MH 01	-	INL-04
CB INL MH 01	-	INL-05
CB INL MH 01	-	INL-02
INL-03	-	INL-02
EX 33	-	CB INL MH 02
CB INL MH 02	-	INL-06
INL-06	-	MH 03
INL-07	-	EX 30
EX 29	-	INL-08
CB INL MH 04	-	INL-09
INL-10	-	INL-11
INL-11	-	INL-12
INL-12	-	INL-13
INL-15	-	MH 05
MH 05	-	INL-14
MH 05	-	MH 06
MH 06	-	INL-16
MH 06	-	MH 07
INL-19	-	MH 07
MH 07	-	INL-20
INL-18	-	MH 08
MH 07	-	MH 08
INL-21	-	INL-23
INL-23	-	MH 09
MH 09	-	INL-22
TOTAL		TOTAL
		6
		1563
		782

SAWING ASPHALT

STATION	LOCATION	690.0150
12+70	EXCHANGE ST	LF
17+67	EXCHANGE ST	100
21+57	JAELGER RD	20
24+37	AHREN LN	25
37+75	HIGHLAND DR	40
44+98	LEWIS LN	30
56+75	RENEE CT	30
	EXCHANGE ST	40
	TOTAL	215

STORM SEWER - STRUCTURES

STATION	STRUCTURE	MANHOLE	MANHOLE	DIAMETER	INLETS	INLET	CONSTRUCT	ION	STAKING	TOP OF	STRUCTURE	INVERT	DEPTH
		TYPE J	S 4-FT	R	2X3-FT	COVERS	STORM	STORM	EACH	ELEVATION	ELEVATION		
15+21.32	INL-01	1	1	1	1	1	1	1	1	851.23	848.72	2.51	
15+31.80	INL-03	1	1	1	1	1	1	1	1	851.89	848.75	3.14	
15+39.64	INL-02	1	1	1	1	1	1	1	1	851.85	848.71	3.14	
15+74.32	CB INL MH 01	1	1	1	1	1	1	1	1	851.82	848.45	3.37	
16+58.52	INL-04	1	1	1	1	1	1	1	1	852.44	848.88	3.56	
16+81.56	INL-05	1	1	1	1	1	1	1	1	852.47	849.10	3.37	
18+05.09	CB INL MH 02	1	1	1	1	1	1	1	1	853.62	847.12	6.5	
18+40.13	INL-06	1	1	1	1	1	1	1	1	853.34	847.48	5.86	
18+53.82	MH 03	1	1	1	1	1	1	1	1	854.58	848.90	5.68	
21+21.61	INL-07	1	1	1	1	1	1	1	1	854.92	851.51	3.41	
22+19.35	INL-08	1	1	1	1	1	1	1	1	854.46	851.54	2.92	
22+25.52	INL-09	1	1	1	1	1	1	1	1	854.48	851.58	2.90	
23+98.65	INL-10	1	1	1	1	1	1	1	1	853.93	850.40	3.53	
24+03.14	INL-11	1	1	1	1	1	1	1	1	853.94	849.35	4.59	
24+31.20	CB INL MH 04	1	1	1	1	1	1	1	1	852.32	849.10	3.22	
24+36.30	INL-12	1	1	1	1	1	1	1	1	854.21	850.57	3.64	
25+12.24	INL-13	1	1	1	1	1	1	1	1	854.37	851.28	3.09	
38+42.74	INL-14	1	1	1	1	1	1	1	1	889.30	885.33	3.97	
38+45.28	INL-15	1	1	1	1	1	1	1	1	888.56	884.60	3.96	
38+53.53	MH 05	1	1	1	1	1	1	1	1	889.30	884.39	4.91	
41+93.36	INL-17	1	1	1	1	1	1	1	1	885.93	881.96	3.97	
42+00.16	INL-16	1	1	1	1	1	1	1	1	885.74	881.77	3.97	
42+01.33	MH 06	1	1	1	1	1	1	1	1	885.94	881.48	4.46	
44+59.59	INL-18	1	1	1	1	1	1	1	1	881.63	877.66	3.97	
45+56.29	INL-19	1	1	1	1	1	1	1	1	879.86	875.90	3.96	
45+64.14	INL-20	1	1	1	1	1	1	1	1	880.48	876.42	4.06	
45+69.17	MH 07	1	1	1	1	1	1	1	1	880.49	875.25	5.24	
48+72.20	MH 08	1	1	1	1	1	1	1	1	878.45	871.66	6.79	
52+11.14	INL-21	1	1	1	1	1	1	1	1	873.34	869.38	3.96	
52+75.46	INL-22	1	1	1	1	1	1	1	1	870.66	866.94	3.72	
52+47.97	INL-23	1	1	1	1	1	1	1	1	873.28	867.73	5.55	
52+61.87	MH 09	1	1	1	1	1	1	1	1	871.21	866.53	4.68	
TOTAL		6	6	26	26	26	32						

CONSTRUCTION STAKING

650.4500	650.9911	650.9920
SUBGRADE	SUPPLEMENTAL	SLOPE
LF	CONTROL (PROJECT)	STAKES
4322	EACH	LF
4322	1	4322
TOTAL	1	4322

Addendum No. 01
 ID 5685-00-05
 Revised Sheet 79
 December 8, 2023

ALL BID ITEMS CATEGORY 0010 UNLESS OTHERWISE NOTED

PERMANENT SIGNING

SIGN #	SIGN CODE	SIGN SIZE	SIGN SIZE WXH	SIGN TYPE II		SF	SF	10-FT EACH	REMARKS
				REFLECTIVE H	REFLECTIVE F				
1-01	W11-2	2S	30X30	-	6.25	6.25	1	1	PEDESTRIAN CROSSING SYMBOL
1-02	W11-2	2S	30X30	-	6.25	6.25	1	1	PEDESTRIAN CROSSING SYMBOL
2-01	W11-2	2S	30X30	-	6.25	6.25	1	1	PEDESTRIAN CROSSING SYMBOL
2-02	W11-2	2S	30X30	-	6.25	6.25	1	1	PEDESTRIAN CROSSING SYMBOL
2-03	S4-51	2S	24X48	-	8.00	8.00	1	1	SCHOOL SPEED LIMIT 15 MPH
2-04	R2-1	2S	24X30	5.00	-	-	1	1	SPEED LIMIT 25 MPH
2-05	W11-2	2S	30X30	-	6.25	6.25	1	1	PEDESTRIAN CROSSING SYMBOL
2-06	R1-1	2S	30X30	6.25	-	-	1	1	STOP
2-07	S4-51	2S	24X48	-	8.00	8.00	1	1	SCHOOL SPEED LIMIT 15 MPH
2-08	W11-2	2S	30X30	-	6.25	6.25	1	1	PEDESTRIAN CROSSING SYMBOL
3-01	R2-1C	-	-	X	X	X	1	1	YOUR SPEED (DYNAMIC MESSAGE SPEED SIGN)
3-02	W11-2	2S	30X30	-	6.25	6.25	1	1	PEDESTRIAN CROSSING SYMBOL
3-03	W11-2	2S	30X30	-	6.25	6.25	1	1	PEDESTRIAN CROSSING SYMBOL
4-01	R2-1	2S	24X30	5.00	-	-	1	1	SPEED LIMIT 25 MPH
4-02	W11-2	2S	30X30	-	6.25	6.25	1	1	PEDESTRIAN CROSSING SYMBOL
4-03	W11-2	2S	30X30	-	6.25	6.25	1	1	PEDESTRIAN CROSSING SYMBOL
4-04	R2-1	2S	24X30	5.00	-	-	1	1	SPEED LIMIT 25 MPH
5-01	R6-2L	1	18X24	3.00	-	-	1	1	ONE WAY LEFT ARROW
TOTAL				24.25	78.50	78.50	18.00		

TRAFFIC CONTROL

12+51 - 55+73	486*	12*	35*	35*	29*	1*
ENDAR DAYS / UNIT	107*	107*	107*	107*	107*	107*
TOTAL	52049	1284	3745	3745	3103	1

EROSION CONTROL - MOBILIZATION

628,1905	MOBILIZATIONS	628,1910	MOBILIZATIONS
EROSION CONTROL EACH	2	EROSION CONTROL EACH	2
TOTAL	2	TOTAL	2

TRAFFIC CONTROL - CONTINUED

643.0300	TRAFFIC CONTROL	643.0410	TRAFFIC CONTROL	643.0705	TRAFFIC CONTROL
DRUMS	TYPE II	TYPE III	TYPE I	TYPE A	TYPE A
DAYS	486*	12*	35*	35*	29*
TOTAL	52049	1284	3745	3745	3103

**Note: One Cycle

INLET PROTECTION TYPE D-RF

STATION	STRUCTURE	EACH
15+21.32	INL-01	1
15+31.80	INL-03	1
15+39.64	INL-02	1
15+74.32	INL MH 01	1
16+58.52	INL-04	1
16+81.56	INL-05	1
18+05.09	INL MH 02	1
18+40.13	INL-06	1
21+06.53	INL-07	1
22+19.35	INL-08	1
22+25.52	INL-09	1
23+98.65	INL-10	1
24+31.28	INL MH 04	1
24+36.30	INL-12	1
25+12.24	INL-13	1
38+42.74	INL-14	1
38+45.28	INL-15	1
41+93.36	INL-17	1
42+00.16	INL-16	1
44+59.59	INL-18	1
45+64.14	INL-19	1
45+70.44	INL-20	1
52+11.14	INL-21	1
52+47.97	INL-22	1
15+28.03	89	1
15+38.09	90	1
15+74.23	91	1
18+07.19	35	1
18+16.05	32	1
20+03.91	31	1
21+54.35	30	1
21+53.97	36	1
21+85.15	29	1
24+31.37	27	1
24+34.25	26	1
24+88.67	25	1
24+92.38	24	1
52+46.49	38	1
52+75.47	49	1
56+52.02	43	1
56+81.26	42	1
TOTAL		41

ALL IDENTIFIED CATEGORIES OUTDOOR UNLESS OTHERWISE NOTED

PAVEMENT MARKING - LINES

646.1020		646.6120		646.7420		646.7520	
MARKING LINE EPOXY 4-INCH		MARKING STOP LINE EPOXY 18-INCH		MARKING CROSSWALK EPOXY TRANSVERSE LINE 6-INCH		MARKING CROSSWALK EPOXY BLOCK STYLE 24-INCH	
STATION	LOCATION	YELLOW SOLID LF	WHITE SOLID LF	WHITE DASHED LF	LF	LF	LF
12+66	EXCHANGE	8840	10940	215	---	---	---
18+13.56	EXCHANGE	---	---	---	---	---	42
21+25.80	EXCHANGE	---	---	---	---	---	42
21+96.63	EXCHANGE	---	---	---	---	---	42
24+24.29	EXCHANGE	---	---	---	---	---	42
24+88.59	EXCHANGE	---	---	---	---	---	42
37+61.82	EXCHANGE	---	---	---	---	---	42
38+10.80	EXCHANGE	---	---	---	---	---	42
44+83.72	EXCHANGE	---	---	---	---	---	42
45+39.74	EXCHANGE	---	---	---	---	---	42
52+35.84	EXCHANGE	---	---	---	---	---	42
53+05.97	EXCHANGE	---	---	---	---	---	42
56+84	EXCHANGE	---	---	---	---	---	42
SLEEPY HOLLOW							
SUBTOTALS		8840	11268	215	135	325	462
TOTALS		20323	135	325	462		

PAVEMENT MARKINGS - SYMBOLS

646.5020		646.5220	
MARKING ARROW EPOXY - TYPE 2		MARKING ARROW EPOXY - TYPE 3	
STATION	LOCATION	EACH	EACH
12+66	EXCHANGE	2	2
56+84	EXCHANGE	2	2
SUBTOTALS			
TOTALS		4	33

TRAFFIC CONTROL PEDESTRIAN ACCOMODATION

FROM	TO	MARKING SYMBOL	MARKING SYMBOL	MARKING SYMBOL	MARKING SYMBOL
SLEEPY HOLLOW ROAD	JAGER ROAD	TEMPORARY PEDESTRIAN BARRICADE	TEMPORARY PEDESTRIAN SURFACE MATTING	TEMPORARY PEDESTRIAN SURFACE MATTING	TEMPORARY PEDESTRIAN SURFACE MATTING
JAGER ROAD	FARWELL STREET	TEMPORARY PEDESTRIAN BARRICADE	TEMPORARY PEDESTRIAN SURFACE MATTING	TEMPORARY PEDESTRIAN SURFACE MATTING	TEMPORARY PEDESTRIAN SURFACE MATTING
TOTALS		24	440	1424	7700

Addendum No. 01
ID 5685-00-05
Revised Sheet 80
December 8, 2023

Addendum No. 01
ID 5685-00-06
Revised Sheet 82
December 8, 2023

WATER MAIN

STATION	SPV.0060.09 10" VALVES AND BOXES EACH	SPV.0060.10 8" VALVES AND BOXES EACH	SPV.0060.11 6" VALVES AND BOXES EACH	SPV.0060.12 1" CURB STOPS EACH	SPV.0060.13 1" CORPORATION STOPS EACH
31+10.63 - 56+39.52	17	2	6	49	49
TOTAL	17	2	6	49	49

WATER MAIN - CONTINUED

STATION	SPV.0060.14 WATER SERVICE LATERAL RECONNECTIONS	SPV.0060.15 EXISTING MAIN RECONNECTIONS	SPV.0090.05 12" WATER MAIN, DUCTILE IRON	SPV.0090.06 10" WATER MAIN, DUCTILE IRON	SPV.0090.07 8" WATER MAIN, DUCTILE IRON	SPV.0090.08 6" WATER MAIN, DUCTILE IRON	SPV.0090.09 1" COPPER WATER SERVICE LATERALS
LF	EACH	EACH	LF	LF	LF	LF	LF
31+10.63 - 56+39.52	49	13	22	2535	60	200	1372
TOTAL	49	13	22	2535	60	200	1372

HYDRANTS

STATION	SPV.0060.16 NEW HYDRANTS	SPV.0060.17 EXISTING HYDRANT REMOVALS
EACH	EACH	EACH
12+74.63	1	1
18+03.75	-	1
18+20.22	1	-
22+10.75	1	-
22+18.26	-	1
24+01.67	-	1
24+15.65	1	-
34+96.00	1	1
39+53.54	1	1
45+53.60	1	1
50+48.33	1	1
56+35.87	1	1
TOTAL	9	9

SANITARY SEWER SPOT REPAIR

STATION	SPV.0060.21 EACH
43+82	1
44+23	1
TOTAL	2

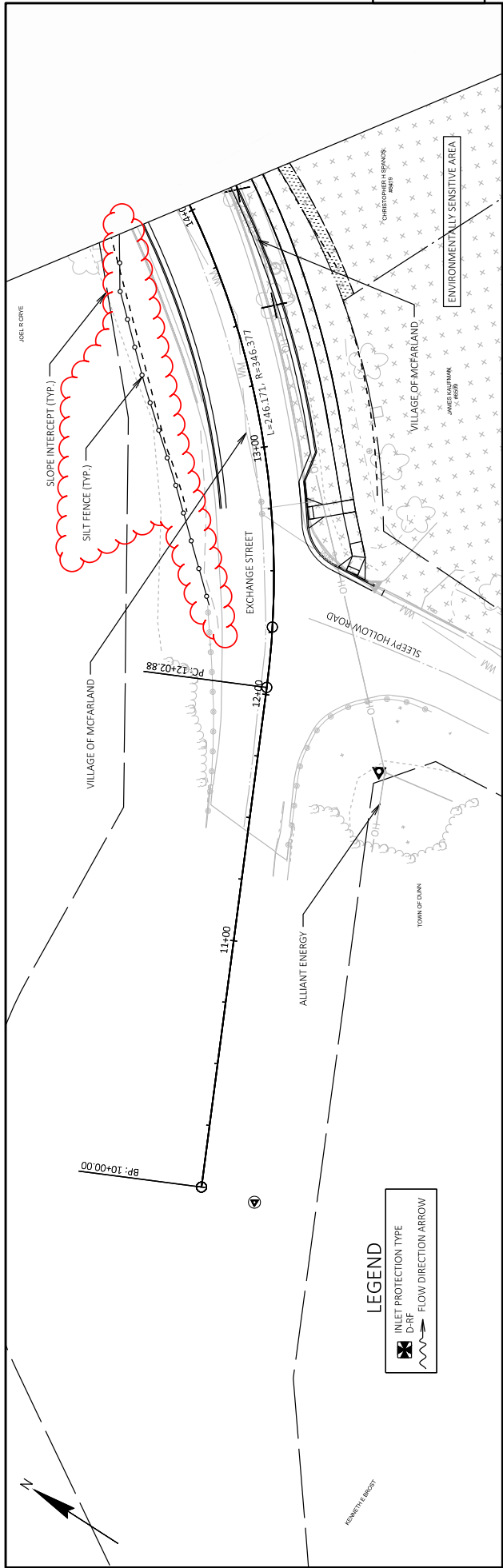
REMOVE AND REINSTALL RRFB CROSSING SYSTEM

STATION	SPV.0060.23 EACH
25+00	1
TOTAL	1

REMOVE AND REINSTALL FENCING

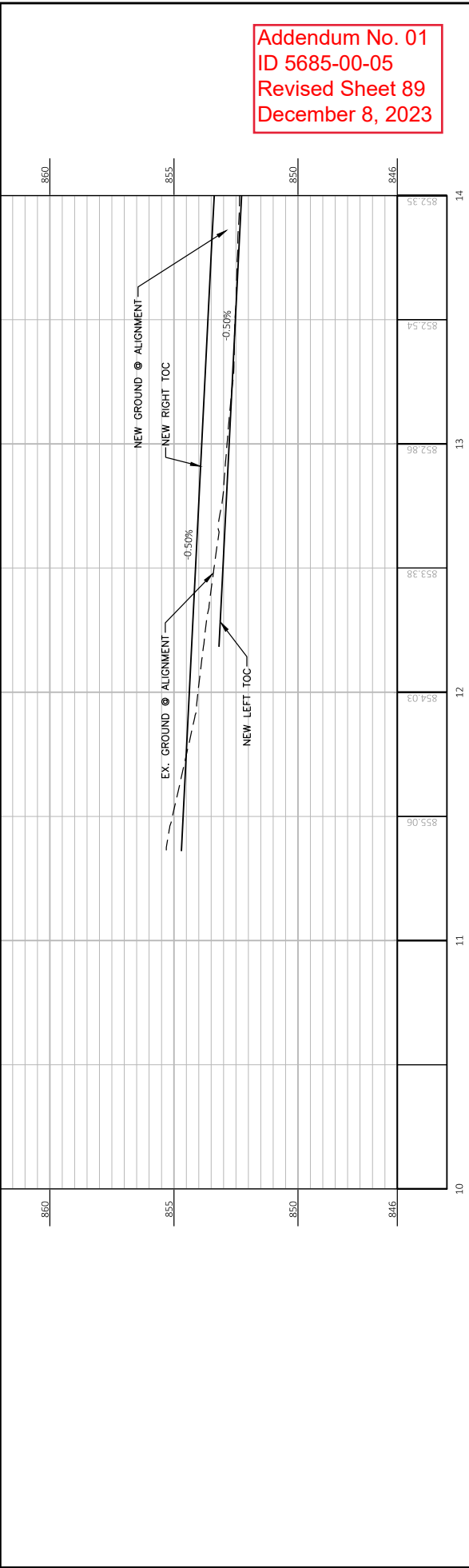
STATION	SPV.0060.22 LF
30+84	80
TOTAL	80

Addendum No. 01
 ID 5685-00-05
 Revised Sheet 89
 December 8, 2023

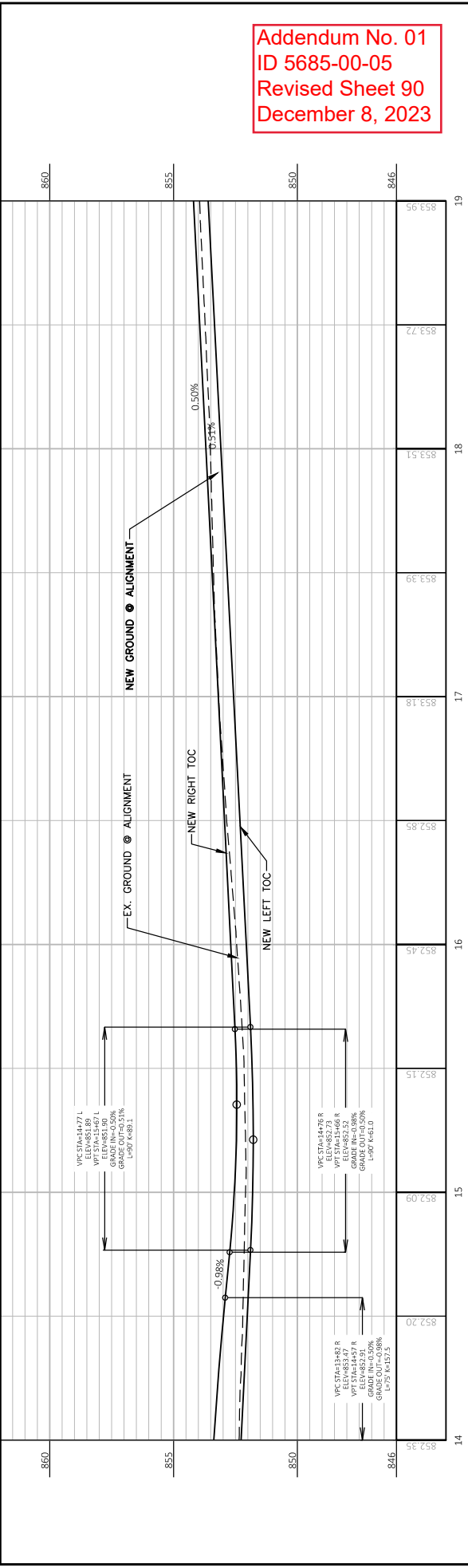
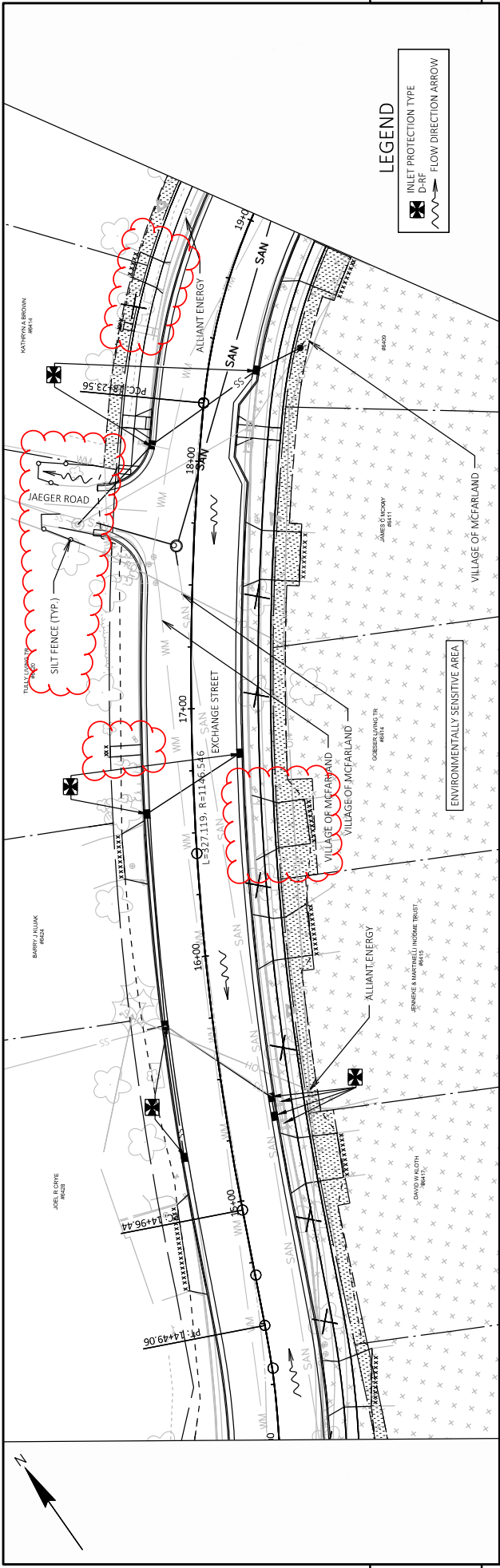


LEGEND

	INLET PROTECTION TYPE
	D-BF
	FLOW DIRECTION ARROW



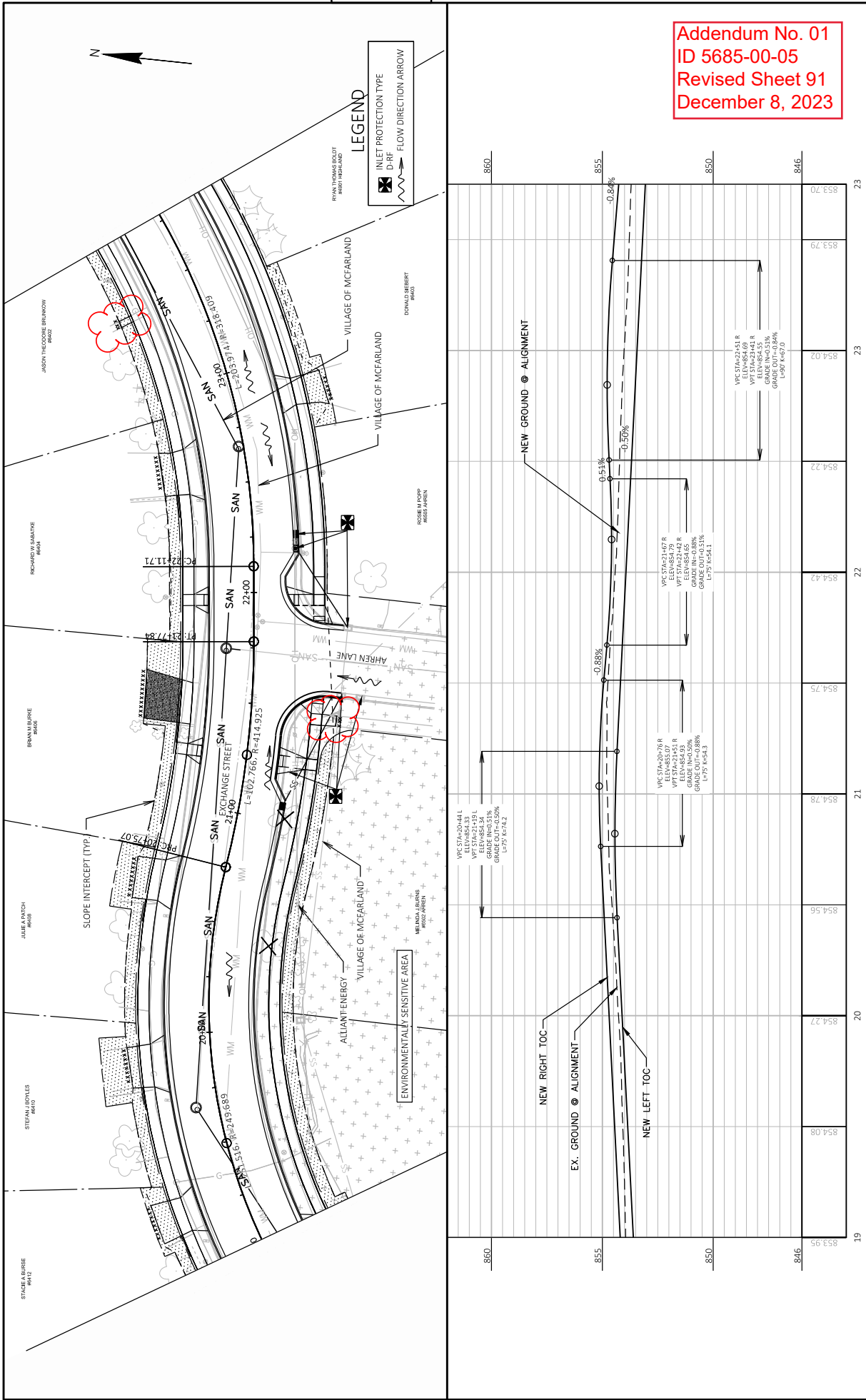
PROJECT NO: 5685-00-05	COUNTY: DANE	PLAN AND PROFILE: EXCHANGE STREET	SHEET 89
FILE NAME: J:\DORVA\MCFARLAND\MC-134-MA EXCHANGE STREET PRELIMINARY ENGINEERING (FILE)\DRAWING\MC-134 PLAN PROFILE.DWG	DATE: 12/05/2023 4:31 PM	PLOT NAME: NIKOLAS DORVA	PLOT SCALE: 1 IN=40 FT
LAYOUT NAME: -01			WISDOT/CADDIS SHEET 44



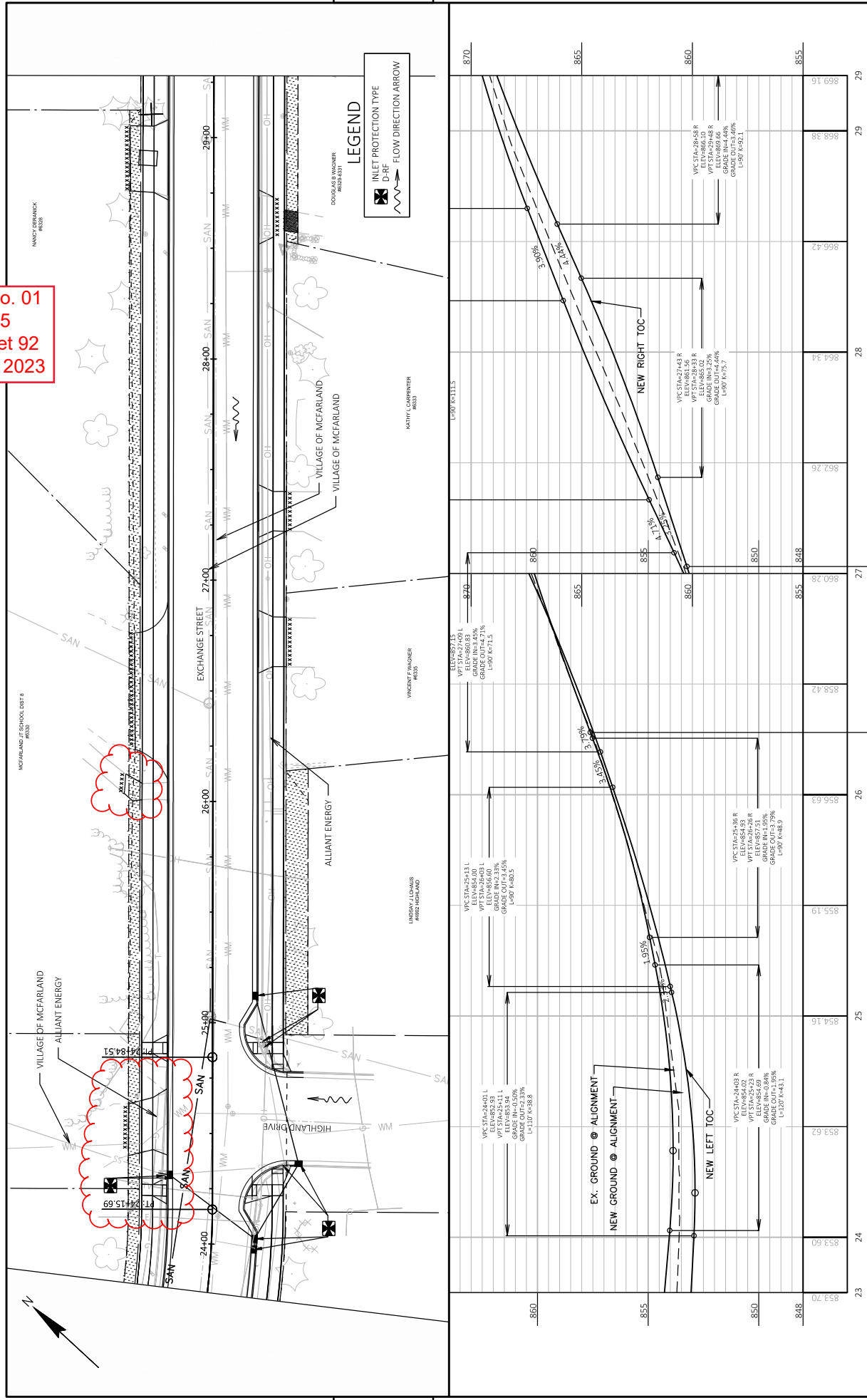
Addendum No. 01
 ID 5685-00-05
 Revised Sheet 90
 December 8, 2023

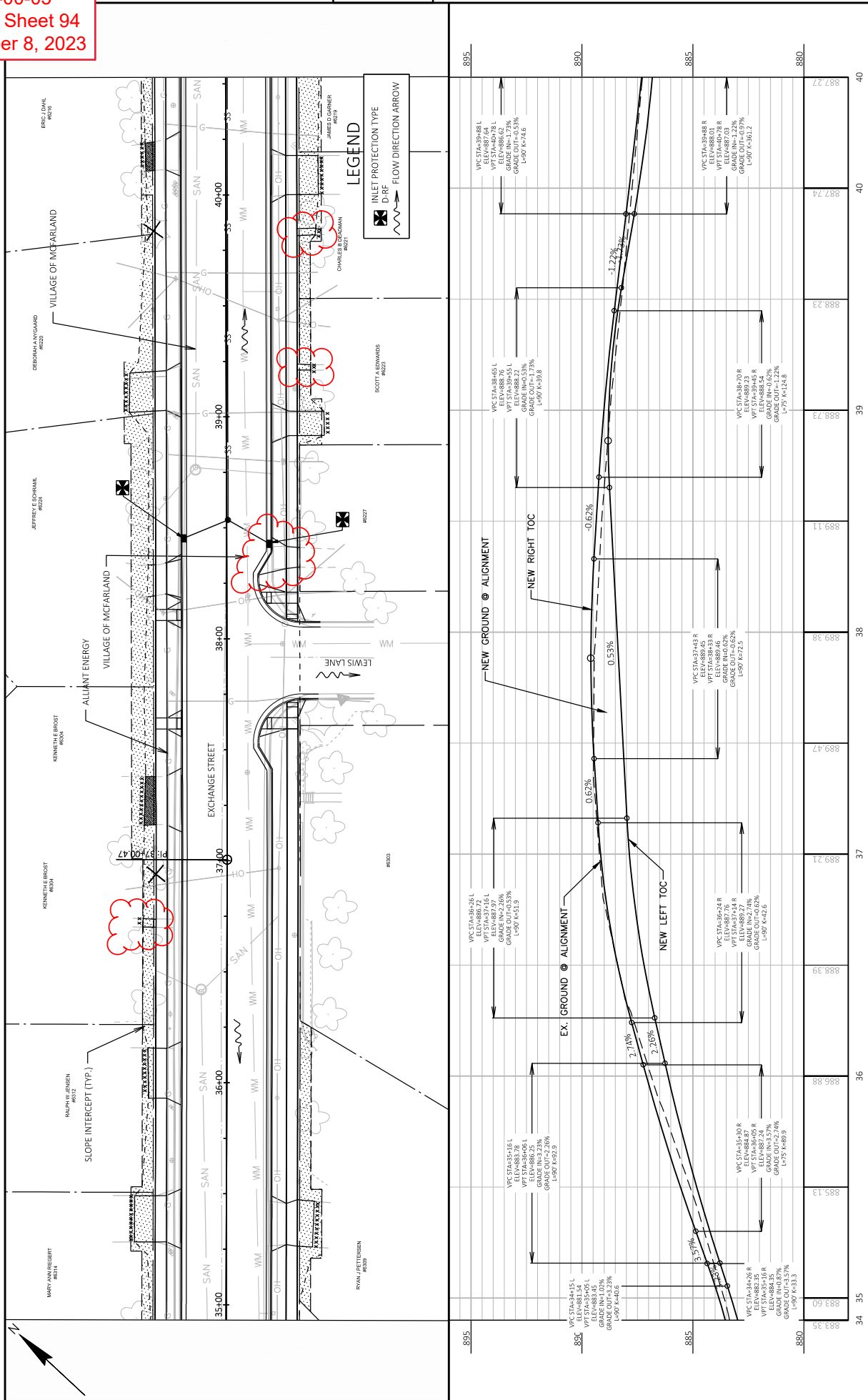
PROJECT NO: 5685-00-05	HWY: EXCHANGE STREET	COUNTY: DANE	PLAN AND PROFILE: EXCHANGE STREET	SHEET: 90	E
FILE NAME: J:\0685\MCFARLAND\MVC-134-MA EXCHANGE STREET PRELIMINARY ENGINEERING (FILE)\DRAWING\MVC-134 PLAN PROFILE.DWG	DATE: 12/05/2023 5:31 PM	BY: NIKOLAS DORAVA	SCALE: 1 IN=40 FT	NO. OF SHEETS: 44	WISDOT/CADD SHEET 44

Addendum No. 01
 ID 5685-00-05
 Revised Sheet 91
 December 8, 2023



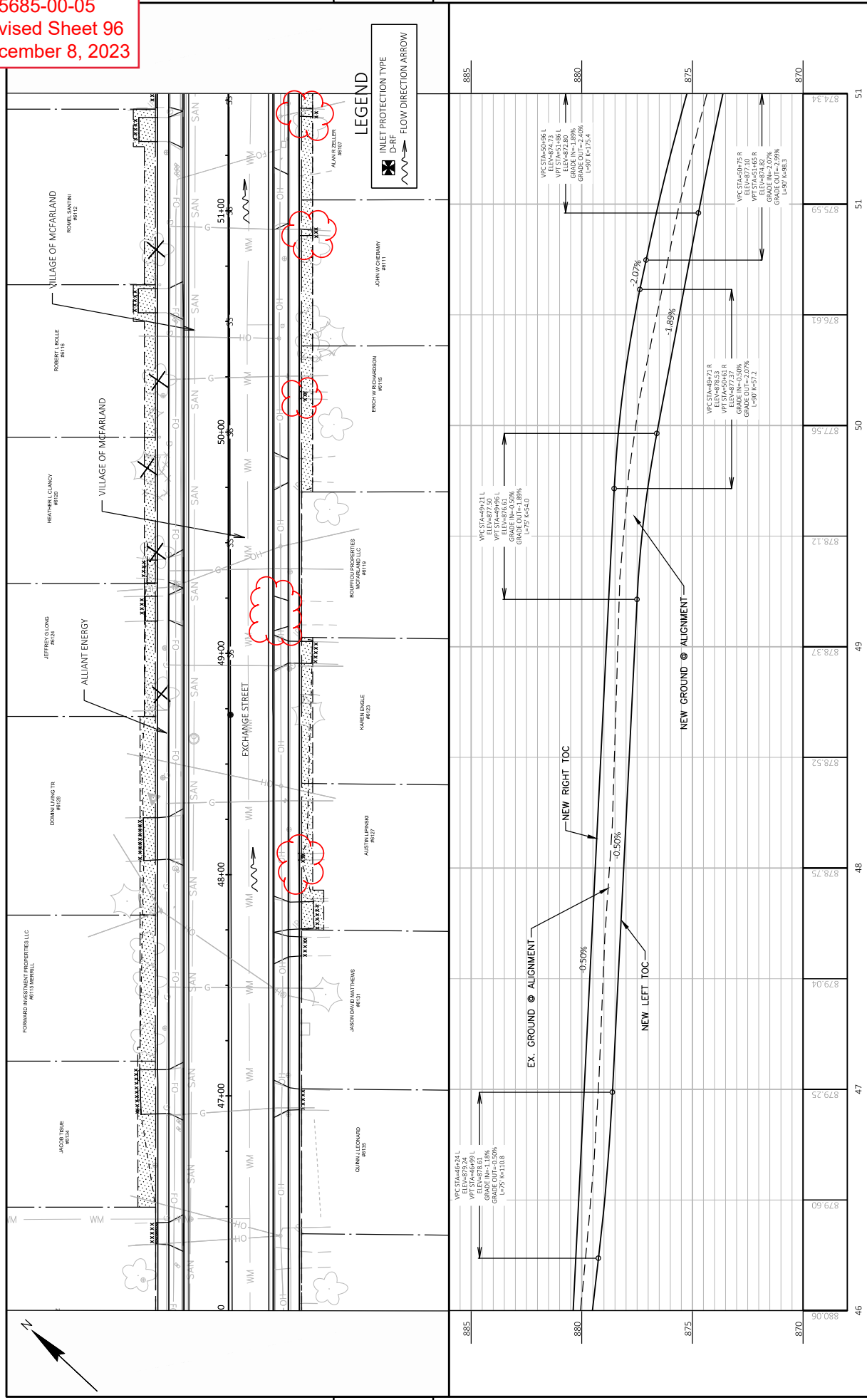
Addendum No. 01
 ID 5685-00-05
 Revised Sheet 92
 December 8, 2023





Addendum No. 01
 ID 5685-00-05
 Revised Sheet 96
 December 8, 2023

5



5

PROJECT NO:	5685-00-05	HWY:	EXCHANGE STREET	COUNTY:	DANE	PLAN AND PROFILE:	EXCHANGE STREET	SHEET	96
FILE NAME:	J:\0685\MCFARLAND\MVC-134-MA EXCHANGE STREET PRELIMINARY ENGINEERING (FILE)\DRAWING\MVC-134 PLAN PROFILE.DWG	DATE:	12/6/2023 2:28 PM	BY:	NIKOLAS DORVA	SCALE:	1 IN=40 FT	E	
LAYOUT NAME: -08									

WISDOT/CADDIS SHEET 44



Proposal Schedule of Items

Proposal ID: 20231212008 Project(s): 5685-00-05, 5685-00-06

Federal ID(s): WISC 2024059, N/A

SECTION: 0001 Contract Items

Alt Set ID: Alt Mbr ID:

Proposal Line Number	Item ID Description	Approximate Quantity and Units	Unit Price	Bid Amount
0002	201.0120 Clearing	555.000 ID	_____.	_____.
0004	201.0220 Grubbing	555.000 ID	_____.	_____.
0006	204.0110 Removing Asphaltic Surface	500.000 SY	_____.	_____.
0008	204.0150 Removing Curb & Gutter	8,560.000 LF	_____.	_____.
0010	204.0155 Removing Concrete Sidewalk	2,060.000 SY	_____.	_____.
0012	204.0220 Removing Inlets	9.000 EACH	_____.	_____.
0014	204.0245 Removing Storm Sewer (size) 01. 12-inch	200.000 LF	_____.	_____.
0016	204.0245 Removing Storm Sewer (size) 02. 15-inch	117.000 LF	_____.	_____.
0018	205.0100 Excavation Common	15,520.000 CY	_____.	_____.
0020	213.0100 Finishing Roadway (project) 01. 5685-00-05	1.000 EACH	_____.	_____.
0022	305.0120 Base Aggregate Dense 1 1/4-Inch	8,785.000 TON	_____.	_____.
0024	305.0130 Base Aggregate Dense 3-Inch	14,410.000 TON	_____.	_____.
0026	312.0110 Select Crushed Material	2,610.000 TON	_____.	_____.
0028	455.0605 Tack Coat	540.000 GAL	_____.	_____.
0030	460.2000 Incentive Density HMA Pavement	3,360.000 DOL	1.00000	3,360.00



Proposal Schedule of Items

Proposal ID: 20231212008 Project(s): 5685-00-05, 5685-00-06

Federal ID(s): WISC 2024059, N/A

SECTION: 0001 Contract Items

Alt Set ID: Alt Mbr ID:

Proposal Line Number	Item ID Description	Approximate Quantity and Units	Unit Price	Bid Amount
0032	460.5224 HMA Pavement 4 LT 58-28 S	3,500.000 TON	_____.	_____.
0034	460.5225 HMA Pavement 5 LT 58-28 S	1,750.000 TON	_____.	_____.
0036	465.0120 Asphaltic Surface Driveways and Field Entrances	60.000 TON	_____.	_____.
0038	601.0411 Concrete Curb & Gutter 30-Inch Type D	8,168.000 LF	_____.	_____.
0040	601.0600 Concrete Curb Pedestrian	110.000 LF	_____.	_____.
0042	602.0405 Concrete Sidewalk 4-Inch	33,665.000 SF	_____.	_____.
0044	602.0415 Concrete Sidewalk 6-Inch	6,765.000 SF	_____.	_____.
0046	602.0515 Curb Ramp Detectable Warning Field Natural Patina	350.000 SF	_____.	_____.
0048	602.0810 Concrete Driveway 6-Inch	1,473.000 SY	_____.	_____.
0050	608.0312 Storm Sewer Pipe Reinforced Concrete Class III 12-Inch	1,563.000 LF	_____.	_____.
0052	608.0318 Storm Sewer Pipe Reinforced Concrete Class III 18-Inch	782.000 LF	_____.	_____.
0054	611.0530 Manhole Covers Type J	6.000 EACH	_____.	_____.
0056	611.0624 Inlet Covers Type H	26.000 EACH	_____.	_____.
0058	611.2004 Manholes 4-FT Diameter	6.000 EACH	_____.	_____.
0060	611.3230 Inlets 2x3-FT	26.000 EACH	_____.	_____.



Proposal Schedule of Items

Proposal ID: 20231212008 Project(s): 5685-00-05, 5685-00-06

Federal ID(s): WISC 2024059, N/A

SECTION: 0001 Contract Items

Alt Set ID: Alt Mbr ID:

Proposal Line Number	Item ID Description	Approximate Quantity and Units	Unit Price	Bid Amount
0062	611.8110 Adjusting Manhole Covers	21.000 EACH	_____.	_____.
0064	619.1000 Mobilization	1.000 EACH	_____.	_____.
0066	624.0100 Water	200.000 MGAL	_____.	_____.
0068	625.0100 Topsoil	9,350.000 SY	_____.	_____.
0070	627.0200 Mulching	9,350.000 SY	_____.	_____.
0072	628.1905 Mobilizations Erosion Control	2.000 EACH	_____.	_____.
0074	628.1910 Mobilizations Emergency Erosion Control	2.000 EACH	_____.	_____.
0076	629.0210 Fertilizer Type B	6.000 CWT	_____.	_____.
0078	630.0140 Seeding Mixture No. 40	168.000 LB	_____.	_____.
0080	630.0500 Seed Water	168.000 MGAL	_____.	_____.
0082	634.0810 Posts Tubular Steel 2x2-Inch X 10-FT	18.000 EACH	_____.	_____.
0084	637.2210 Signs Type II Reflective H	24.250 SF	_____.	_____.
0086	637.2230 Signs Type II Reflective F	78.500 SF	_____.	_____.
0088	638.2102 Moving Signs Type II	2.000 EACH	_____.	_____.
0090	638.2602 Removing Signs Type II	16.000 EACH	_____.	_____.
0092	638.3000 Removing Small Sign Supports	16.000 EACH	_____.	_____.



Proposal Schedule of Items

Proposal ID: 20231212008 Project(s): 5685-00-05, 5685-00-06

Federal ID(s): WISC 2024059, N/A

SECTION: 0001 Contract Items

Alt Set ID: Alt Mbr ID:

Proposal Line Number	Item ID Description	Approximate Quantity and Units	Unit Price	Bid Amount
0094	638.4000 Moving Small Sign Supports	2.000 EACH	_____.	_____.
0096	642.5001 Field Office Type B	1.000 EACH	_____.	_____.
0098	643.0300 Traffic Control Drums	52,049.000 DAY	_____.	_____.
0100	643.0410 Traffic Control Barricades Type II	1,284.000 DAY	_____.	_____.
0102	643.0420 Traffic Control Barricades Type III	3,745.000 DAY	_____.	_____.
0104	643.0705 Traffic Control Warning Lights Type A	3,745.000 DAY	_____.	_____.
0106	643.0900 Traffic Control Signs	3,103.000 DAY	_____.	_____.
0108	643.0920 Traffic Control Covering Signs Type II	5.000 EACH	_____.	_____.
0110	643.3970 Temporary Marking Removable Mask Out Tape 10-Inch	40.000 LF	_____.	_____.
0112	643.5000 Traffic Control	1.000 EACH	_____.	_____.
0114	644.1440 Temporary Pedestrian Surface Matting	7,700.000 SF	_____.	_____.
0116	644.1601 Temporary Pedestrian Curb Ramp	24.000 DAY	_____.	_____.
0118	644.1605 Temporary Pedestrian Detectable Warning Field	440.000 SF	_____.	_____.
0120	644.1810 Temporary Pedestrian Barricade	1,424.000 LF	_____.	_____.
0122	646.1020 Marking Line Epoxy 4-Inch	20,323.000 LF	_____.	_____.
0124	646.5020 Marking Arrow Epoxy	4.000 EACH	_____.	_____.



Proposal Schedule of Items

Proposal ID: 20231212008 Project(s): 5685-00-05, 5685-00-06

Federal ID(s): WISC 2024059, N/A

SECTION: 0001 Contract Items

Alt Set ID: Alt Mbr ID:

Proposal Line Number	Item ID Description	Approximate Quantity and Units	Unit Price	Bid Amount
0126	646.5220 Marking Symbol Epoxy	33.000 EACH	_____.	_____.
0128	646.6120 Marking Stop Line Epoxy 18-Inch	135.000 LF	_____.	_____.
0130	646.7420 Marking Crosswalk Epoxy Transverse Line 6-Inch	325.000 LF	_____.	_____.
0132	646.7520 Marking Crosswalk Epoxy Block Style 24-Inch	462.000 LF	_____.	_____.
0134	650.4000 Construction Staking Storm Sewer	32.000 EACH	_____.	_____.
0136	650.4500 Construction Staking Subgrade	4,322.000 LF	_____.	_____.
0138	650.5000 Construction Staking Base	4,322.000 LF	_____.	_____.
0140	650.5500 Construction Staking Curb Gutter and Curb & Gutter	8,278.000 LF	_____.	_____.
0142	650.9000 Construction Staking Curb Ramps	35.000 EACH	_____.	_____.
0144	650.9500 Construction Staking Sidewalk (project) 01. 5685-00-05	1.000 EACH	_____.	_____.
0146	650.9911 Construction Staking Supplemental Control (project) 01. 5685-00-05	1.000 EACH	_____.	_____.
0148	650.9920 Construction Staking Slope Stakes	4,322.000 LF	_____.	_____.
0150	652.0225 Conduit Rigid Nonmetallic Schedule 40 2-Inch	2,360.000 LF	_____.	_____.
0152	653.0154 Pull Boxes Non-Conductive 24x36-Inch	4.000 EACH	_____.	_____.
0154	655.0625 Electrical Wire Lighting 6 AWG	7,620.000 LF	_____.	_____.



Proposal Schedule of Items

Proposal ID: 20231212008 Project(s): 5685-00-05, 5685-00-06

Federal ID(s): WISC 2024059, N/A

SECTION: 0001 Contract Items

Alt Set ID: Alt Mbr ID:

Proposal Line Number	Item ID Description	Approximate Quantity and Units	Unit Price	Bid Amount
0156	659.2124 Lighting Control Cabinets 120/240 24-Inch	1.000 EACH	_____.	_____.
0158	690.0150 Sawing Asphalt	215.000 LF	_____.	_____.
0160	740.0440 Incentive IRI Ride	3,292.000 DOL	1.00000	3,292.00
0162	ASP.1T0A On-the-Job Training Apprentice at \$5.00/HR	450.000 HRS	5.00000	2,250.00
0164	ASP.1T0G On-the-Job Training Graduate at \$5.00/HR	400.000 HRS	5.00000	2,000.00
0166	SPV.0060 Special 01. Inlet Protection Type D-RF	41.000 EACH	_____.	_____.
0168	SPV.0060 Special 02. Remove and Reinstall Mailbox	59.000 EACH	_____.	_____.
0170	SPV.0060 Special 03. Existing Sanitary Sewer Connection	8.000 EACH	_____.	_____.
0172	SPV.0060 Special 04. Sanitary Lateral Tracer Wire Box	15.000 EACH	_____.	_____.
0174	SPV.0060 Special 05. Sanitary Service Lateral Connection	16.000 EACH	_____.	_____.
0176	SPV.0060 Special 06. Sanitary Sewer 18"x4" Wye	14.000 EACH	_____.	_____.
0178	SPV.0060 Special 07. Sanitary Sewer 8"x4" Wye	2.000 EACH	_____.	_____.
0180	SPV.0060 Special 08. Sanitary Manhole Casting	15.000 EACH	_____.	_____.
0182	SPV.0060 Special 09. 10" Valves and Boxes	17.000 EACH	_____.	_____.



Proposal Schedule of Items

Proposal ID: 20231212008 Project(s): 5685-00-05, 5685-00-06

Federal ID(s): WISC 2024059, N/A

SECTION: 0001 Contract Items

Alt Set ID: Alt Mbr ID:

Proposal Line Number	Item ID Description	Approximate Quantity and Units	Unit Price	Bid Amount
0184	SPV.0060 Special 10. 8" Valves and Boxes	2.000 EACH	_____.	_____.
0186	SPV.0060 Special 11. 6" Valves and Boxes	6.000 EACH	_____.	_____.
0188	SPV.0060 Special 12. 1" Curb Stops	49.000 EACH	_____.	_____.
0190	SPV.0060 Special 13. 1" Corporation Stops	49.000 EACH	_____.	_____.
0192	SPV.0060 Special 14. Water Service Lateral Reconnections	49.000 EACH	_____.	_____.
0194	SPV.0060 Special 15. Existing Main Reconnections	13.000 EACH	_____.	_____.
0196	SPV.0060 Special 16. New Hydrants	9.000 EACH	_____.	_____.
0198	SPV.0060 Special 17. Existing Hydrant Removals	9.000 EACH	_____.	_____.
0200	SPV.0060 Special 18. Lighting Unit Type Special 1	11.000 EACH	_____.	_____.
0202	SPV.0060 Special 19. Lighting Unit Type Special 2	7.000 EACH	_____.	_____.
0204	SPV.0060 Special 20. Utility Line Opening	10.000 EACH	_____.	_____.
0206	SPV.0060 Special 21. Sanitary Sewer Spot Repair	2.000 EACH	_____.	_____.
0208	SPV.0090 Special 01. Sanitary Sewer, PVC 18-Inch	775.000 LF	_____.	_____.
0210	SPV.0090 Special 02. Sanitary Sewer, PVC 12-Inch	14.000 LF	_____.	_____.
0212	SPV.0090 Special 03. Sanitary Sewer, PVC 8-Inch	25.000 LF	_____.	_____.
0214	SPV.0090 Special 04. Sanitary Sewer, PVC 4-Inch	616.000 LF	_____.	_____.



Proposal Schedule of Items

Proposal ID: 20231212008 Project(s): 5685-00-05, 5685-00-06

Federal ID(s): WISC 2024059, N/A

SECTION: 0001 Contract Items

Alt Set ID: Alt Mbr ID:

Proposal Line Number	Item ID Description	Approximate Quantity and Units	Unit Price	Bid Amount
0216	SPV.0090 Special 05. 12" Water Main Ductile Iron	22.000 LF	_____.	_____.
0218	SPV.0090 Special 06. 10" Water Main, Ductile Iron	2,535.000 LF	_____.	_____.
0220	SPV.0090 Special 07. 8" Water Main, Ductile Iron	60.000 LF	_____.	_____.
0222	SPV.0090 Special 08. 6" Water Main, Ductile Iron	200.000 LF	_____.	_____.
0224	SPV.0090 Special 09. 1" Copper Water Service Laterals	1,372.000 LF	_____.	_____.
0226	SPV.0090 Special 10. Temporary Sewer Bypassing and Connections	729.000 LF	_____.	_____.
0228	SPV.0200 Special 01. Sanitary Manhole Masonry 48-Inch Diameter	40.200 VF	_____.	_____.
0230	520.8000 Concrete Collars for Pipe	6.000 EACH	_____.	_____.
0232	602.1500 Concrete Steps	15.000 SF	_____.	_____.
0234	628.1504 Silt Fence	230.000 LF	_____.	_____.
0236	611.0430 Reconstructing Inlets	2.000 EACH	_____.	_____.
0238	652.0325 Conduit Rigid Nonmetallic Schedule 80 2-Inch	80.000 LF	_____.	_____.
0240	654.0102 Concrete Bases Type 2	18.000 EACH	_____.	_____.
0242	654.0200 Concrete Control Cabinet Bases Type 6	1.000 EACH	_____.	_____.
0244	690.0250 Sawing Concrete	1,100.000 LF	_____.	_____.



Proposal Schedule of Items

Proposal ID: 20231212008 Project(s): 5685-00-05, 5685-00-06

Federal ID(s): WISC 2024059, N/A

SECTION: 0001 Contract Items

Alt Set ID: Alt Mbr ID:

Proposal Line Number	Item ID Description	Approximate Quantity and Units	Unit Price	Bid Amount
0246	SPV.0060 Special 22. Remove and Reinstall RRFB Crossing System	1.000 EACH	_____.	_____.
0248	SPV.0090 Special 11. Remove and Reinstall Fencing	80.000 LF	_____.	_____.
Section: 0001			Total:	_____.
			Total Bid:	_____.

