



Wisconsin Department of Transportation

Division of Transportation Systems Development

Bureau of Project Development
4822 Madison Yards Way, 4th Floor South
Madison, WI 53705

January 3, 2024

Telephone: (608) 266-1631
Facsimile (FAX): (608) 266-8459

NOTICE TO ALL CONTRACTORS:

Proposal #11: 2265-10-71, WISC 2024116
Oak Creek - Milwaukee
8 Mile Rd to Elm Rd
STH 241
Milwaukee County

Letting of January 9, 2024

This is Addendum No. 01, which provides for the following:

Special Provisions:

Added Special Provisions	
Article No.	Description
23	Inlets 5-FT Diameter, Item SPV.0060.01

Schedule of Items:

Revised Bid Item Quantities					
Bid Item	Item Description	Unit	Proposal Total Prior to Addendum	Proposal Quantity Change (-)	Proposal Total After Addendum
611.3225	Inlets 2x2.5-FT	Each	7	-1	6
611.9710	Salvaged Inlet Covers Type WM	Each	7	-1	6

Added Bid Item Quantities					
Bid Item	Item Description	Unit	Proposal Total Prior to Addendum	Quantity Added	Proposal Total After Addendum
611.0639	Inlet Covers Type H-S	Each	0	1	1
SPV.0060.01	Inlets 5-FT Diameter	Each	0	1	1

Plan Sheets:

Revised Plan Sheets	
Plan Sheet	Plan Sheet Title (brief description of changes to sheet)
26	Storm Sewer: Elm Rd (revised SS structure type and cover)
64	Miscellaneous Quantities (revised and added quantities for SS structure type and cover)

Added Plan Sheets	
Plan Sheet	Plan Sheet Title (brief description of why sheet was added)
64A	Added Miscellaneous Quantity
73A	SDD Manholes, 3-FT, 4-FT, 5-FT, 6-FT, 8-FT, 9-FT, and 10-FT Diameter

The responsibility for notifying potential subcontractors and suppliers of these changes remains with the prime contractor.

Sincerely,

Mike Coleman

Proposal Development Specialist
Proposal Management Section

ADDENDUM NO. 01

2265-10-71

January 3, 2024

Special Provisions

23. Inlets 5-FT Diameter, Item SPV.0060.01.

A Description

This special provision describes providing an inlet according to section 611 of the standard specs and as detailed in the plans.

B Materials

Furnish concrete inlets according to standard spec 611.2.

Concrete shall have a compressive strength (f'c) of 5,000 psi.

Reinforcing steel shall have a yield strength of 60 ksi.

Reinforcing steel shall be epoxy coated.

C Construction

Construct concrete inlets according to standard spec 611.3, as shown in the standard detail drawing "Manholes, 3-FT, 4-FT, 5-FT, 6-FT, 7-FT, 8-FT, 9-FT and 10-FT Diameter.

D Measurement

The department will measure Inlet 5-FT Diameter by the individual unit, acceptably completed.

E Payment

The department will pay for measured quantities at the contract unit price under the following bid item:

ITEM NUMBER	DESCRIPTION	UNIT
SPV.0060.01	Inlets 5-FT Diameter	EACH

Schedule of Items

Attached, dated January 3, 2024, are the revised Schedule of Items Pages 4 and 10.

Plan Sheets

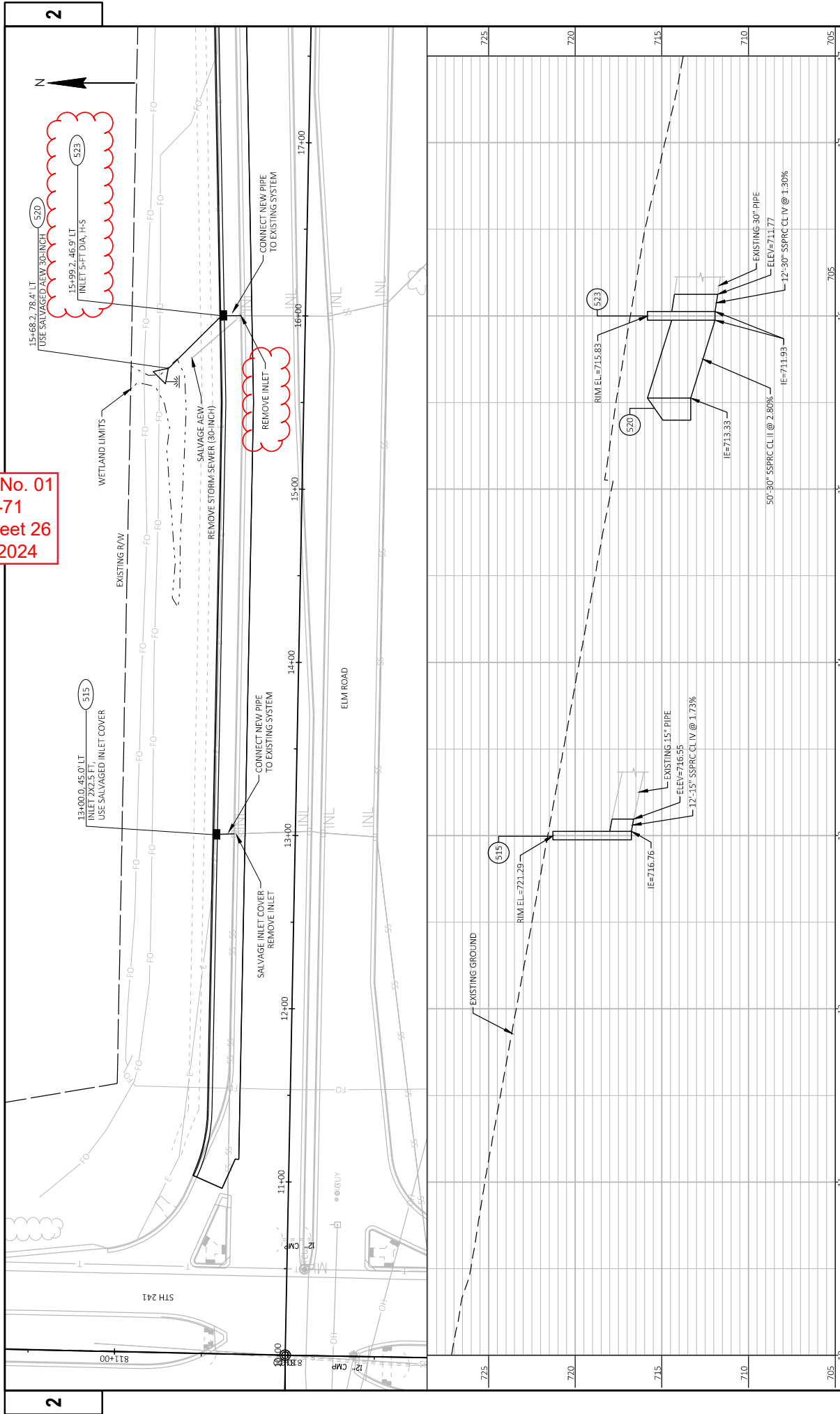
The following 8½ x 11-inch sheets are attached and made part of the plans for this proposal:

Revised: 26, and 64.

Added: 64A and 73A.

END OF ADDENDUM

Addendum No. 01
ID 2265-10-71
Revised Sheet 26
January 3, 2024



PROJECT NO: 2265-10-71	COUNTY: MILWAUKEE	STORM SEWER	SHEET 26	E
FILE NAME: C:\D:\CORE\INC\PROJECTS - WISE REGION\2265-10-02_5TH_241_MILWAUKEE CO\500_CADD\500_CADD_501_CADD_3018\22651002\26\26\PLAN\226510-SS.DWG	DATE: 12/22/2023 1:53 PM	DESIGNER: JESSICA LEWIS, PE	SCALE: 1"=50.00'	NO. 41
Hwy: 5TH 241				

Addendum No. 01
ID 2265-10-71
Revised Sheet 64
January 3, 2024

STORM SEWER

CATEGORY	ROADWAY	STRUCTURE NUMBER	STATION	O/S	COVER ELEV	CORRUGATED POLYETHYLENE 12-INCH		30-INCH		42-INCH		APRON ENDWALLS FOR CULVERT PIPE SALVAGED	
						LF	LF	LF	LF	EA	EA		524.0630
0010	STH 241	1	787+37	55.7 RT	674.69	16	--	--	--	--	1	--	
SUBTOTAL 0010						16	--	--	--	--	1	--	
0030	ELMRD	515	13E+00	45' LT	721.29	--	12	--	1.73	1	--	--	
		520	15E+68	78.4' LT	--	--	50	--	2.80	--	2	1	
		523	15E+99	46.9' LT	715.83	--	12	--	1.30	1	--	--	
		528	19E+00	57.1' LT	710.36	--	12	--	1.50	1	--	--	
		533	22E+00	55.6' LT	706.86	--	28	--	0.82	--	--	--	
		545	22E+30	55.6' LT	706.86	--	12	--	1.98	1	--	--	
		538	22E+45	124' LT	--	--	--	12	1.62	1	2	1	
		550	22E+50	55.6' LT	706.85	--	18	--	2.06	--	--	--	
		554	26E+00	57' LT	709.33	--	12	--	0.95	1	--	--	
UNDISTRIBUTED						--	--	--	--	--	--	--	
SUBTOTAL 0030						16	94	62	12	15	6	4	1
PROJECT TOTAL						16	94	62	12	15	6	4	1

*FOR INFORMATION ONLY

STORM SEWER

CATEGORY	ROADWAY	STRUCTURE NUMBER	STATION	O/S	COVER ELEV	INLETS 2X2-FT	INLETS 5-FT DIA	INLET COVERS	INLET TYPE-H-S	INLET TYPE-V	INLET TYPE-W/M	CULVERT END DEPTH	MARKERS	CONCRETE COLLAR FOR PIPE	PIPE TIES REQ'D	APRON ENDWALLS FOR CULVERT PIPE STEEL 12-INCH	APRON ENDWALLS FOR CULVERT PIPE SALVAGED	
																		EA
0010	STH 241	1	787+37	55.7 RT	674.69	1	--	--	--	1	--	3.75	--	--	--	1	--	670.19
SUBTOTAL 0010						1	--	--	--	1	--	3.75	--	--	--	1	--	670.19
0030	ELMRD	515	13E+00	45' LT	721.29	--	--	--	--	--	--	3.98	--	1	--	515	EXIST	716.56
		520	15E+68	78.4' LT	--	--	--	--	--	--	--	--	1	--	520	523	EXIST	713.33
		523	15E+99	46.9' LT	715.83	--	1	--	--	--	--	3.44	--	--	523	EXIST	711.64	711.93
		528	19E+00	57.1' LT	710.36	--	--	--	--	--	--	3.08	--	1	--	528	EXIST	706.53
		533	22E+00	55.6' LT	706.86	--	1	--	--	--	--	3.80	--	1	--	533	EXIST	702.31
		545	22E+30	55.6' LT	706.86	--	1	--	--	--	--	4.39	--	1	--	545	EXIST	701.72
		538	22E+45	124' LT	--	--	--	--	--	--	--	--	1	--	538	EXIST	701.92	
		550	22E+50	55.6' LT	706.85	--	1	--	--	--	--	3.73	--	1	--	550	EXIST	702.37
		554	26E+00	57' LT	709.33	--	1	--	--	--	--	4.30	--	1	--	554	EXIST	704.28
UNDISTRIBUTED						--	--	--	--	--	--	--	--	--	--	--	--	704.48
SUBTOTAL 0030						6	6	1	1	1	2	6	2	6	2	6	2	6
PROJECT TOTAL						6	6	1	1	1	2	6	2	6	2	6	2	6

**PIPES NOT INCLUDE 6" OF ADJUSTING RINGS



Proposal Schedule of Items

Proposal ID: 20240109011 Project(s): 2265-10-71

Federal ID(s): WISC 2024116

SECTION: 0001 Roadway Items

Alt Set ID: Alt Mbr ID:

Proposal Line Number	Item ID Description	Approximate Quantity and Units	Unit Price	Bid Amount
0092	601.0588 Concrete Curb & Gutter 4-Inch Sloped 36-Inch Type TBT	194.000 LF	_____.	_____.
0094	602.3010 Concrete Surface Drains	1.000 CY	_____.	_____.
0096	606.0200 Riprap Medium	10.000 CY	_____.	_____.
0098	608.0415 Storm Sewer Pipe Reinforced Concrete Class IV 15-Inch	94.000 LF	_____.	_____.
0100	608.0430 Storm Sewer Pipe Reinforced Concrete Class IV 30-Inch	62.000 LF	_____.	_____.
0102	608.0442 Storm Sewer Pipe Reinforced Concrete Class IV 42-Inch	12.000 LF	_____.	_____.
0104	611.0654 Inlet Covers Type V	1.000 EACH	_____.	_____.
0106	611.0660 Inlet Covers Type WM	2.000 EACH	_____.	_____.
0108	611.3220 Inlets 2x2-FT	1.000 EACH	_____.	_____.
0110	611.3225 Inlets 2x2.5-FT	6.000 EACH	_____.	_____.
0112	611.9710 Salvaged Inlet Covers	6.000 EACH	_____.	_____.
0114	612.0106 Pipe Underdrain 6-Inch	1,690.000 LF	_____.	_____.
0116	612.0406 Pipe Underdrain Wrapped 6-Inch	400.000 LF	_____.	_____.
0118	614.0010 Barrier System Grading Shaping Finishing	2.000 EACH	_____.	_____.
0120	614.0150 Anchor Assemblies for Steel Plate Beam Guard	2.000 EACH	_____.	_____.



Proposal Schedule of Items

Proposal ID: 20240109011 Project(s): 2265-10-71

Federal ID(s): WISC 2024116

SECTION: 0001 Roadway Items

Alt Set ID: Alt Mbr ID:

Proposal Line Number	Item ID Description	Approximate Quantity and Units	Unit Price	Bid Amount
0278	715.0502 Incentive Strength Concrete Structures	2,550.000 DOL	1.00000	2,550.00
0280	740.0440 Incentive IRI Ride	3,940.000 DOL	1.00000	3,940.00
0282	999.2000.S Installing and Maintaining Bird Deterrent System (station) 01. 786+20	1.000 EACH	_____.	_____.
0284	ASP.1T0A On-the-Job Training Apprentice at \$5.00/HR	1,200.000 HRS	5.00000	6,000.00
0286	ASP.1T0G On-the-Job Training Graduate at \$5.00/HR	2,280.000 HRS	5.00000	11,400.00
0288	SPV.0060 Special 04. Moving Overhead Sign Support S-40-942	1.000 EACH	_____.	_____.
0290	SPV.0195 Special 01. Asphaltic Repair	82.000 TON	_____.	_____.
0292	611.0639 Inlet Covers Type H-S	1.000 EACH	_____.	_____.
0294	SPV.0060 Special 01. Inlets 5-FT Diameter	1.000 EACH	_____.	_____.
Section: 0001			Total:	_____.
			Total Bid:	_____.

