



# Wisconsin Department of Transportation

February 7, 2024

**Division of Transportation Systems Development**  
Bureau of Project Development  
4822 Madison Yards Way, 4<sup>th</sup> Floor South  
Madison, WI 53705

Telephone: (608) 266-1631  
Facsimile (FAX): (608) 266-8459

## NOTICE TO ALL CONTRACTORS:

**Proposal #28: 6767-01-71**  
**V Plover, CTH B**  
**Wisconsin Ave to Hoover Ave**  
**CTH B**  
**Portage County**

**6767-02-71, WISC 2024247**  
**V Plover, CTH B**  
**Hoover Ave to IH 39 Interchange**  
**CTH B**  
**Portage County**

## Letting of February 13, 2024

This is Addendum No. 03, which provides for the following:

### Special Provisions:

Added Special Provisions	
Article No.	Description
52	Stamping Colored Concrete, Item 405.1000

### Plan Sheets:

Revised Plan Sheets	
Plan Sheet	Plan Sheet Title (brief description of changes to sheet)
131	Traffic Control (Updated keynote for storm sewer connection)
402	Cross Sections (Updated notes for storm sewer connections)
406	Cross Sections (Updated notes for storm sewer connections)

The responsibility for notifying potential subcontractors and suppliers of these changes remains with the prime contractor.

Sincerely,

*Mike Coleman*

Proposal Development Specialist  
Proposal Management Section

**ADDENDUM NO. 03**

**6767-01-71**

**February 7, 2024**

**Special Provisions**

**52. Stamping Colored Concrete, Item 405.1000.**

This special provision describes stamping and coloring concrete Federal Color 30051 "Leather Brown" for work constructed under other contract bid items. Conform to standard spec 405 as modified in this special provision.

*Replace standard spec 405.2.1.1(1) with the following:*

- (1) Integrally color concrete using non-fading pigments conforming to ASTM C979.
  - For Leather Brown: use synthetic pigment at a loading rate as recommended by the manufacture. Match the concrete color in reasonably close conformance with Leather Brown color, which is similar to Federal Standard 595 - FS 30051.

*Replace standard spec 405.2.1.1(3) with the following:*

- (3) The department will accept the color based on comparison to existing stamped and colored concrete located within the median area between back of curb and landscaping areas.

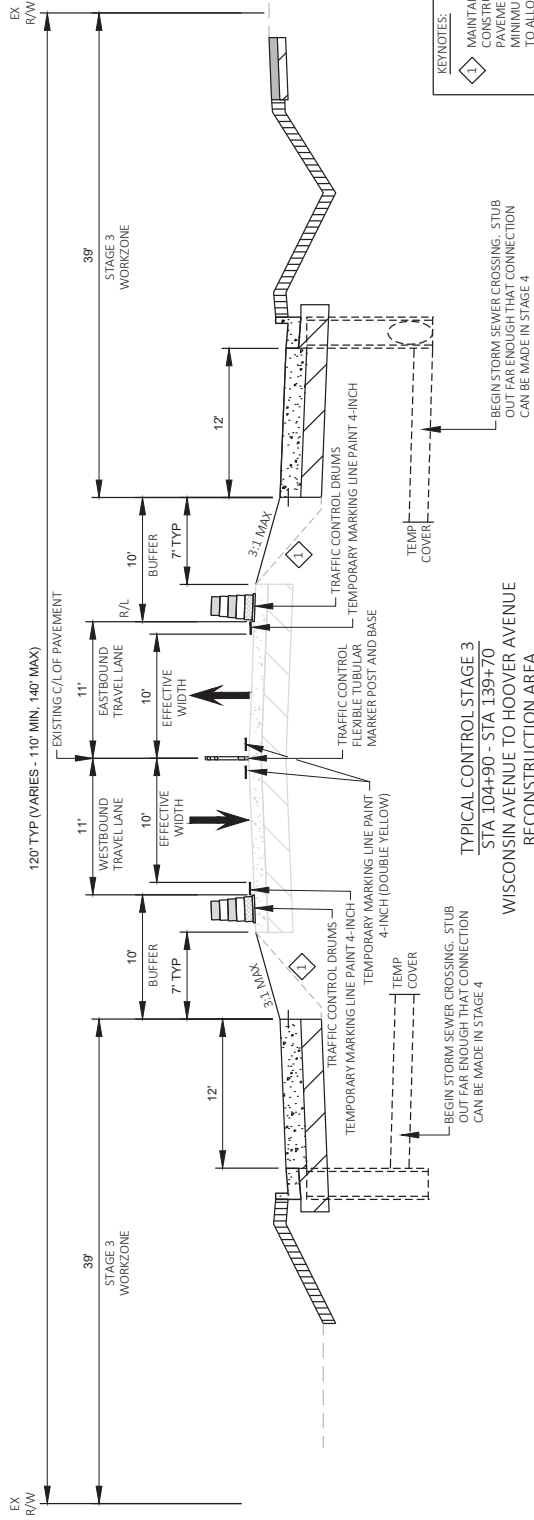
*Replace the entire contents of standard spec 405.2.2 with the following:*

- (1) Furnish Leather Brown full-depth colored concrete conforming to standard spec 405.2.1
- (2) Use a brick stamping patterns similar to the pattern used within the median area between back of curb and landscaping areas.

stp-405-100 (20190618)

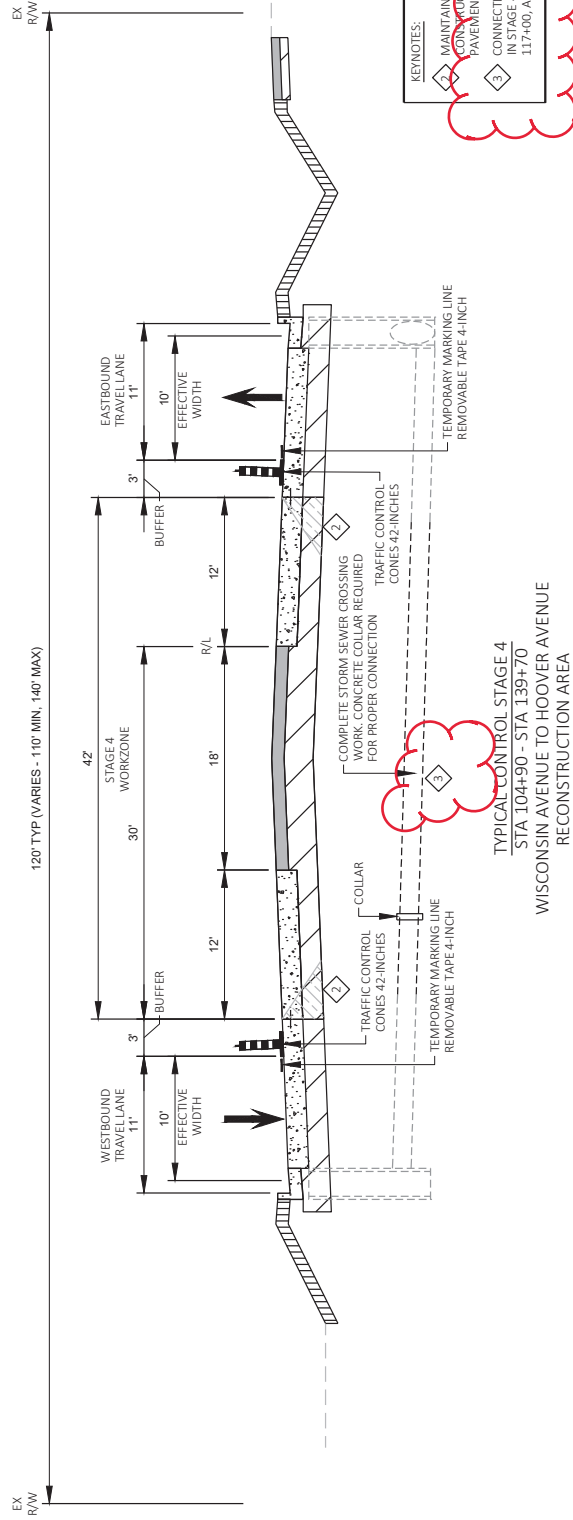
END OF ADDENDUM

Addendum No. 03  
 ID 6767-02-71  
 Revised Sheet 131  
 February 7, 2024



KEYNOTES:  
 1 MAINTAIN SAFE SLOPE (3:1) DURING CONSTRUCTION UNTIL CONCRETE PAVEMENT IS INSTALLED. GRADE A 1" MINIMUM SUBGRADE EXTENSION TO ALLOW FOR PAVING EQUIPMENT.

TYPICAL CONTROL STAGE 3  
 STA 104+90 - STA 139+70  
 WISCONSIN AVENUE TO HOOVER AVENUE  
 RECONSTRUCTION AREA

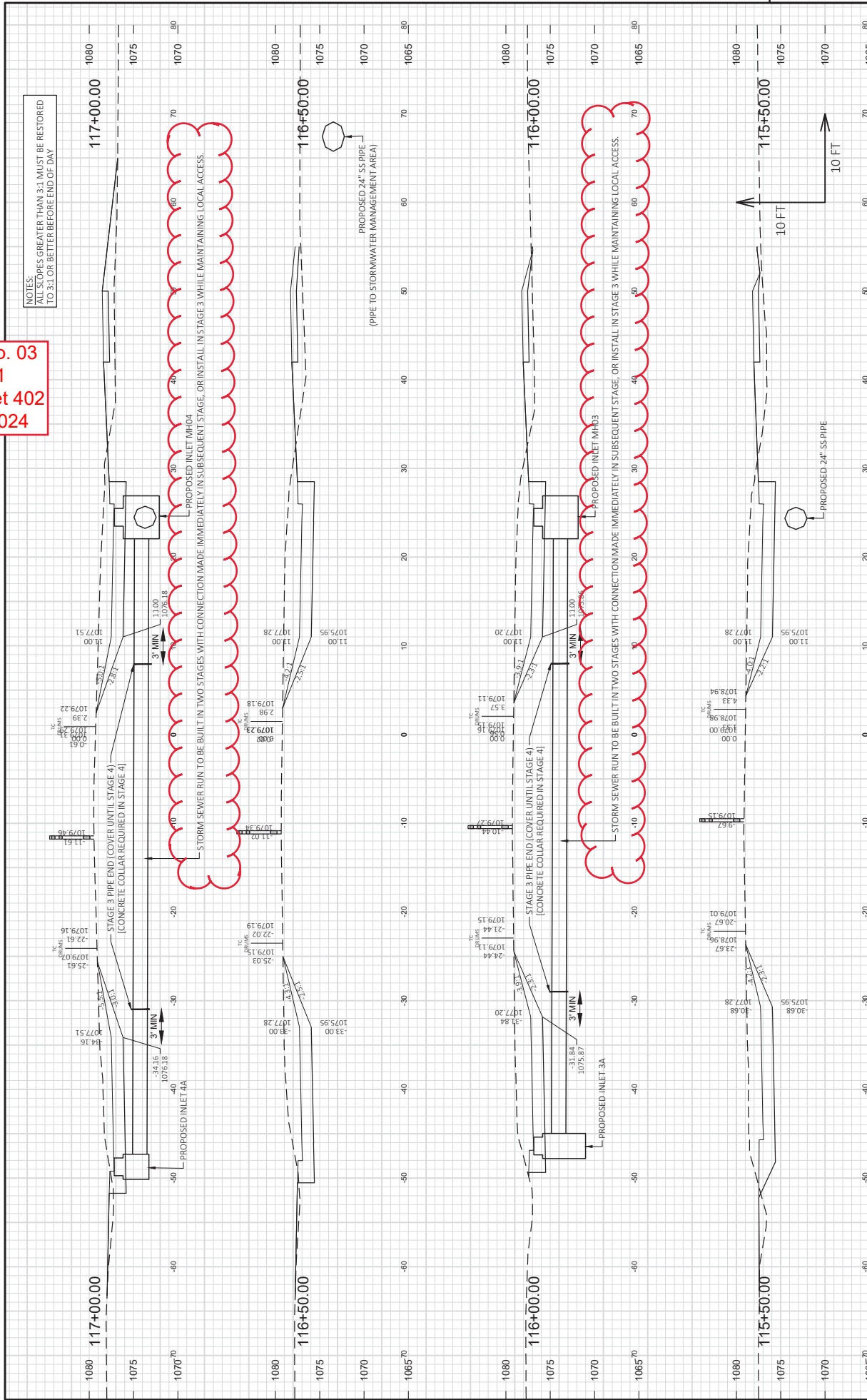


KEYNOTES:  
 2 MAINTAIN SAFE SLOPE (3:1) DURING CONSTRUCTION UNTIL CONCRETE PAVEMENT IS INSTALLED.  
 3 CONNECTION TO BE MADE IMMEDIATELY IN STAGE 4 AT STA. 116+00, STA 117+00, AND STA 124+00

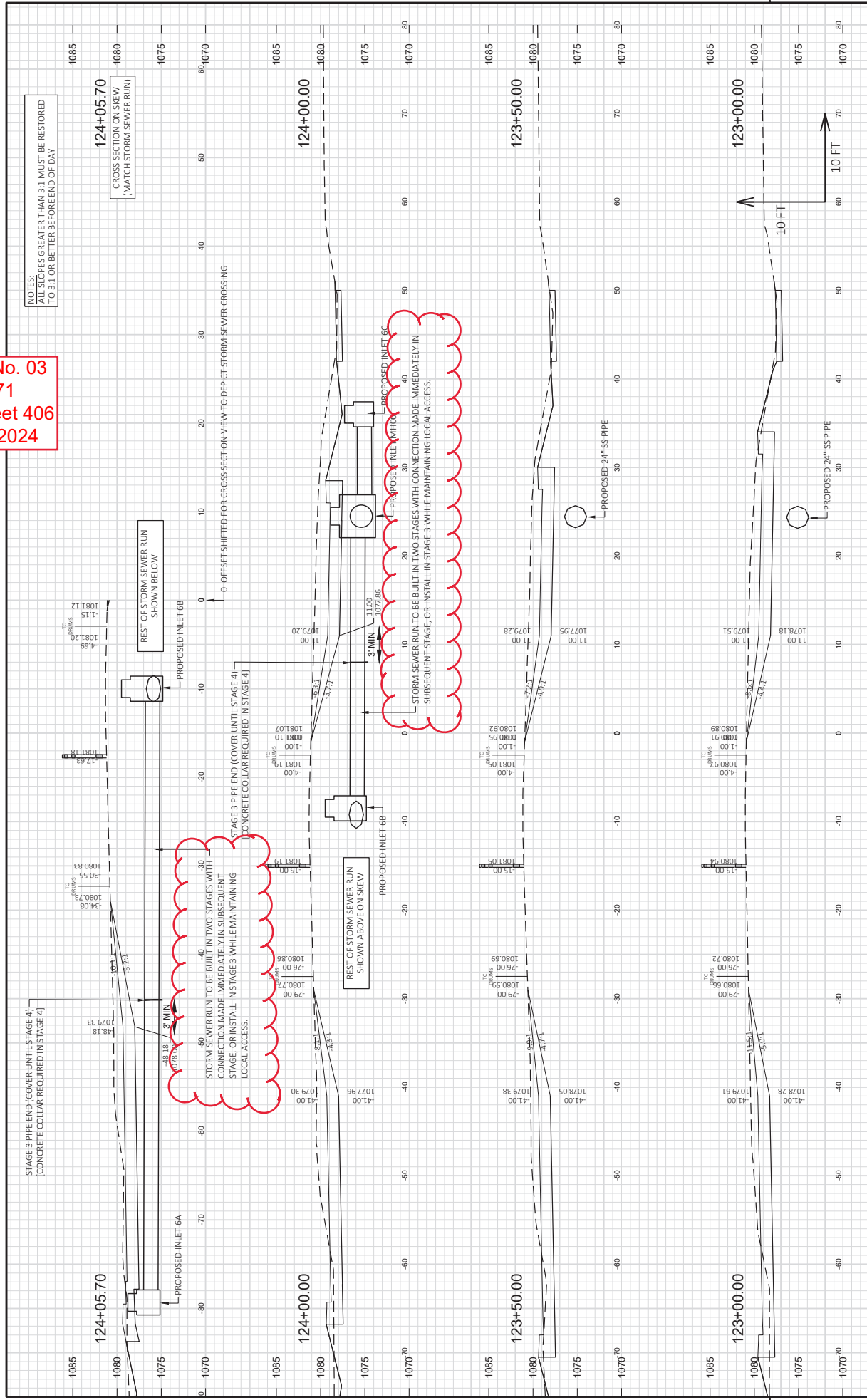
TYPICAL CONTROL STAGE 4  
 STA 104+90 - STA 139+70  
 WISCONSIN AVENUE TO HOOVER AVENUE  
 RECONSTRUCTION AREA

**Addendum No. 03**  
**ID 6767-02-71**  
**Revised Sheet 402**  
**February 7, 2024**

NOTES:  
 ALL SLOPES GREATER THAN 3:1 MUST BE RESTORED  
 TO 3:1 OR BETTER BEFORE END OF DAY



Addendum No. 03  
 ID 6767-02-71  
 Revised Sheet 406  
 February 7, 2024



NOTES:  
 ALL SLOPES GREATER THAN 3:1 MUST BE RESTORED  
 TO 3:1 OR BETTER BEFORE END OF DAY

124+05.70  
 CROSS SECTION ON SKEW  
 (MATCH STORM SEWER RUN)

0'-0" OFFSET SHIFTED FOR CROSS SECTION VIEW TO DEPICT STORM SEWER CROSSING

STORM SEWER RUN TO BE BUILT IN TWO STAGES WITH CONNECTION MADE IMMEDIATELY IN SUBSEQUENT STAGE, OR INSTALL IN STAGE 3 WHILE MAINTAINING LOCAL ACCESS.

STORM SEWER RUN TO BE BUILT IN TWO STAGES WITH CONNECTION MADE IMMEDIATELY IN SUBSEQUENT STAGE, OR INSTALL IN STAGE 3 WHILE MAINTAINING LOCAL ACCESS.

