



# Wisconsin Department of Transportation

## Division of Transportation Systems Development

Bureau of Project Development  
4822 Madison Yards Way, 4<sup>th</sup> Floor South  
Madison, WI 53705

March 20, 2024

Telephone: (608) 266-1631  
Facsimile (FAX): (608) 266-8459

### NOTICE TO ALL CONTRACTORS:

**Proposal #15: 6320-00-75**  
**Plainfield – Wisconsin Rapids**  
**STH 173 to STH 54**  
**STH 73**  
**Wood County**

### Letting of April 9, 2024

This is Addendum No. 01, which provides for the following:

#### Special Provisions:

Revised Special Provisions	
Article No.	Description
3	Prosecution and Progress

#### Schedule of Items:

Revised Bid Item Quantities					
Bid Item	Item Description	Unit	Proposal Total Prior to Addendum	Proposal Quantity Change (-)	Proposal Total After Addendum
204.0110	Removing Asphaltic Surface	SY	1,439	-248	1,191
204.0115	Removing Asphaltic Surface Butt Joints	SY	1,153	6	1,159
204.0120	Removing Asphaltic Surface Milling	SY	47,739	27	47,766
205.0100	Excavation Common	CY	347	-47	300
208.0100	Borrow	CY	62	-51	11
211.0400	Prepare Foundation for Asphaltic Shoulders	STA	64	-1	63
305.0110	Base Aggregate Dense 3/4-Inch	TON	249	-19	230
305.0120	Base Aggregate Dense 1 1/4-Inch	TON	1,346	-110	1,236
450.4000	HMA Cold Weather Paving	TON	1,260	2	1,262
455.0605	Tack Coat	GAL	5,716	4	5,720
460.6224	HMA Pavement 4 MT 58-28 S	TON	5,148	3	5,151
460.6424	HMA Pavement 4 MT 58-28 H	TON	4,970	3	4,973
465.0105	Asphaltic Surface	TON	204	-35	169

465.0120	Asphaltic Surface Driveways and Field Entrances	TON	81	-11	70
602.0405	Concrete Sidewalk 4-Inch	SF	5,592	-120	5,472
602.0505	Curb Ramp Detectable Warning Field Yellow	SF	494	-40	454
624.0100	Water	MGAL	27	-2	25
625.0500	Salvaged Topsoil	SY	2,378	-463	1,915
628.2008	Erosion Mat Urban Class I Type B	SY	2,378	-463	1,915
629.0210	Fertilizer Type B	CWT	6.9	-0.5	6.4
630.0140	Seeding Mixture No. 40	LB	35.9	-8.4	27.5
630.0200	Seeding Temporary	LB	34.5	-6.4	28.1
630.0500	Seed Water	MGAL	91	-11	80
650.9000	Construction Staking Curb Ramps	EACH	44	-2	42
690.0150	Sawing Asphalt	LF	3,079	730	3,809
SPV.0180.02	Preparing Topsoil for Lawn Type Turf	SY	2,324	-409	1,915

### **Plan Sheets:**

<b>Revised Plan Sheets</b>	
Plan Sheet	Plan Sheet Title (brief description of changes to sheet)
11	Typical Sections (Removed the multi-use path across the railroad from the project)
29	Curb Ramp Overview (Removed the multi-use path across the railroad from the project)
62	Erosion Control (Removed associated items from the multi-use path across the railroad from the project)
77	Pavement Marking (Removed the multi-use path across the railroad from the project)
127	Traffic Control – Stage 3 (Removed the multi-use path across the railroad from the project)
128	Traffic Control – Stage 3 (Removed the multi-use path across the railroad from the project)
135	Traffic Control – Stage 4 (Removed line across the top of the sheet)
142	Miscellaneous Quantities (Removed the multi-use path quantities)
144	Miscellaneous Quantities (Removed the multi-use path from the earthwork and updated the Prepare Foundation for Asphaltic Shoulders item for the multi-use path removal)
145	Miscellaneous Quantities (Removed the quantities for the multi-use path from the Base Aggregate items)
146	Miscellaneous Quantities (Removed the quantities associated with asphalt for the removal of the multi-use path)
147	Miscellaneous Quantities (Removed the quantities associated with asphalt for the removal of the multi-use path and the driveway quantities)
149	Miscellaneous Quantities (Removed the quantities associated with sidewalk and detectable warning fields for removal of the multi-use path)
151	Miscellaneous Quantities (Removed the quantities for restoration of the multi-use path for the removal of the multi-use path)
157	Miscellaneous Quantities (Removed the quantities for sawing at the multi-use path and added sawing for removal of the temporary pavement)
181	Plan (Removed the multi-use path across the railroad from the project)
287	Earthwork (Removed the earthwork for the multi-use path across the railroad from the project)

<b>Deleted Plan Sheets</b>	
<b>Plan Sheet</b>	<b>Plan Sheet Title (brief description of why sheet was deleted)</b>
23	Multi-Use Path Railroad Crossing (multi-use path removed from the project)
52	Curb Ramps – Wisconsin Central Limited Railroad Crossing, 37E (multi-use path removed from the project)
294	Cross Sections: Multi-Use Path Railroad Crossing (multi-use path removed from the project)

The responsibility for notifying potential subcontractors and suppliers of these changes remains with the prime contractor.

Sincerely,

*Mike Coleman*

Proposal Development Specialist  
Proposal Management Section

**ADDENDUM NO. 01**

**6320-00-75**

**March 20, 2024**

**Special Provisions**

**3. Prosecution and Progress.**

*Replace entire subsection titled **Stage 3:** under section titled **Construction Staging** with the following:*

**Stage 3:** Mill and pave the left northbound lane from the STH 73/STH 173 intersection to the Moccasin Creek Bridge. From the Moccasin Bridge to the end of the project, pave the northbound lane. Remove the widening on STH 73 from Station 100+50 to Station 113+00. Construct the curb ramp near Station 109+00 RT. No impacts shall occur within Riverside Park.

**Schedule of Items**

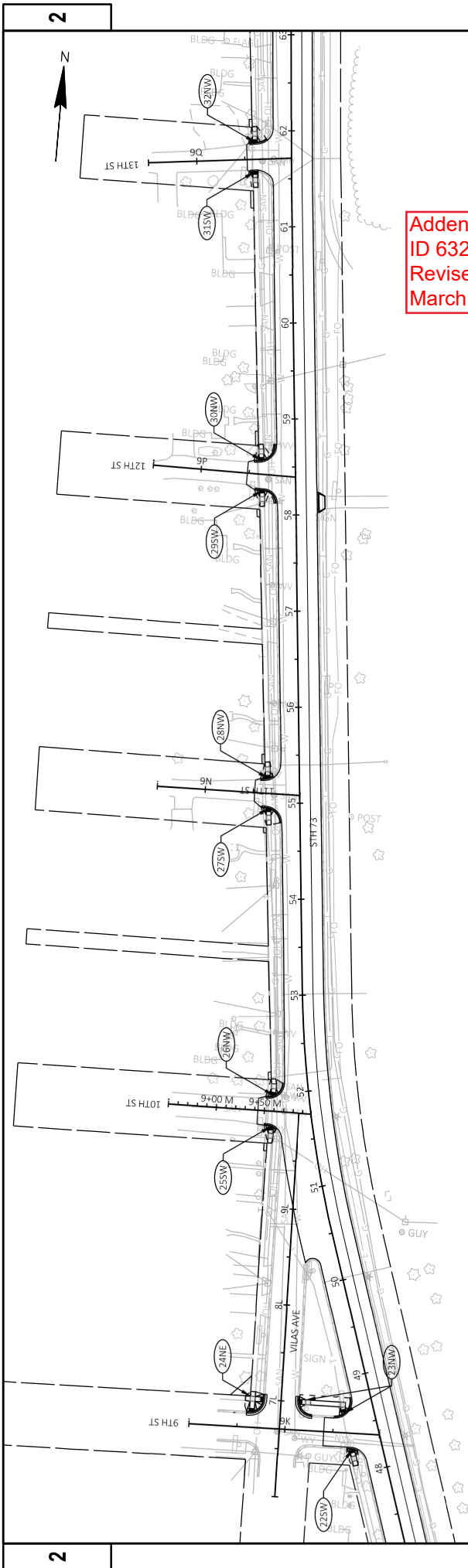
Attached, dated March 20, 2024, are the revised Schedule of Items Pages 1 – 10.

**Plan Sheets**

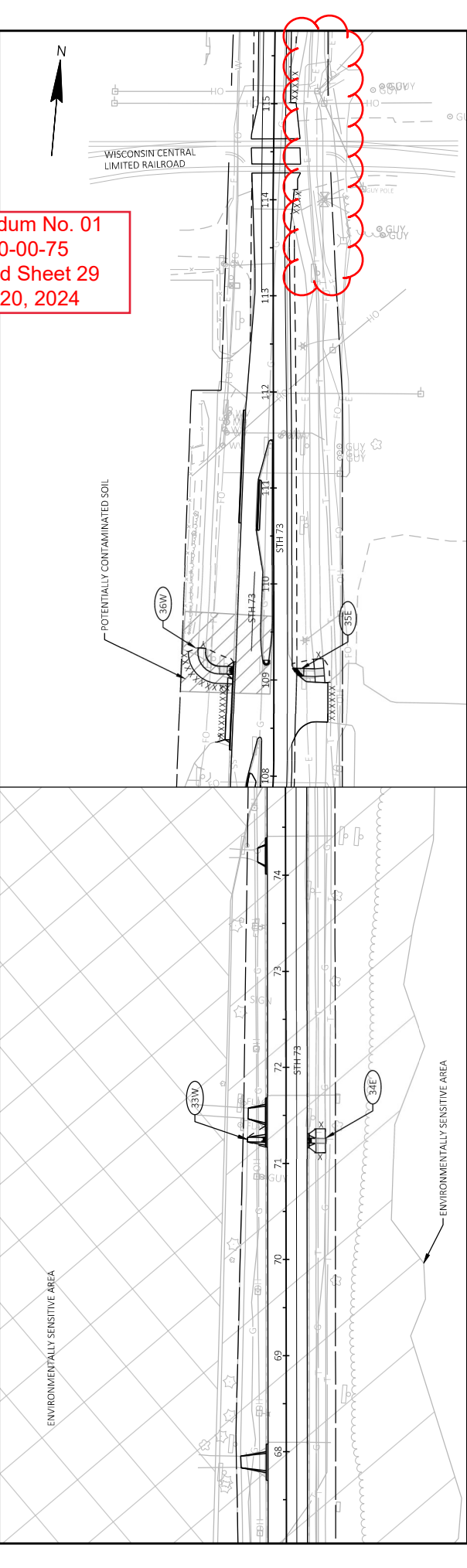
The following 8½ x 11-inch sheets are attached and made part of the plans for this proposal:  
Revised: 11, 29, 62, 77, 127, 128, 135, 142, 144, 145, 146, 147, 149, 151, 157, 181, and 287.

END OF ADDENDUM



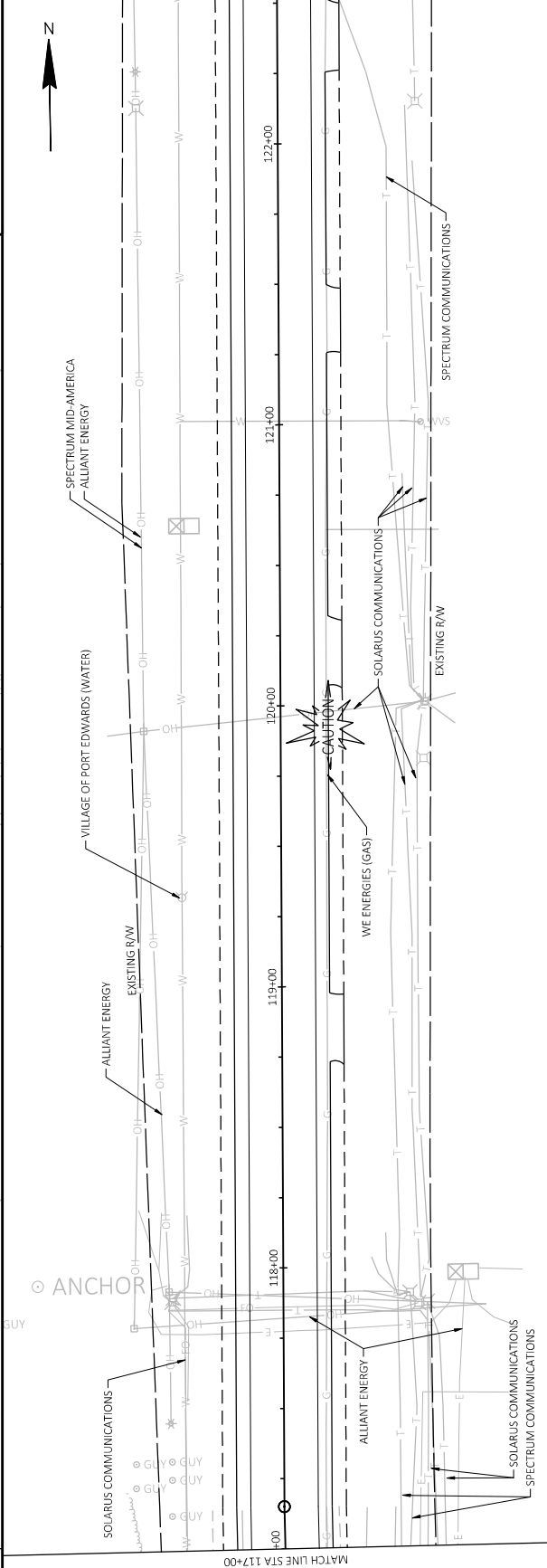
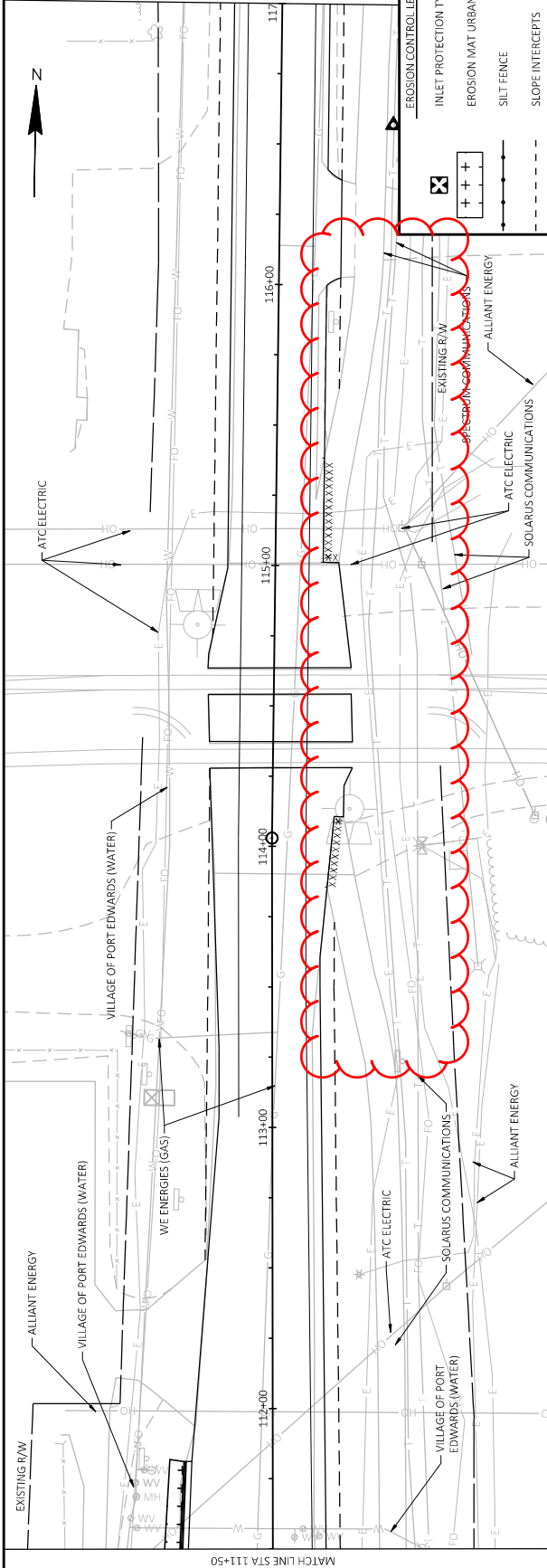


Addendum No. 01  
 ID 6320-00-75  
 Revised Sheet 29  
 March 20, 2024



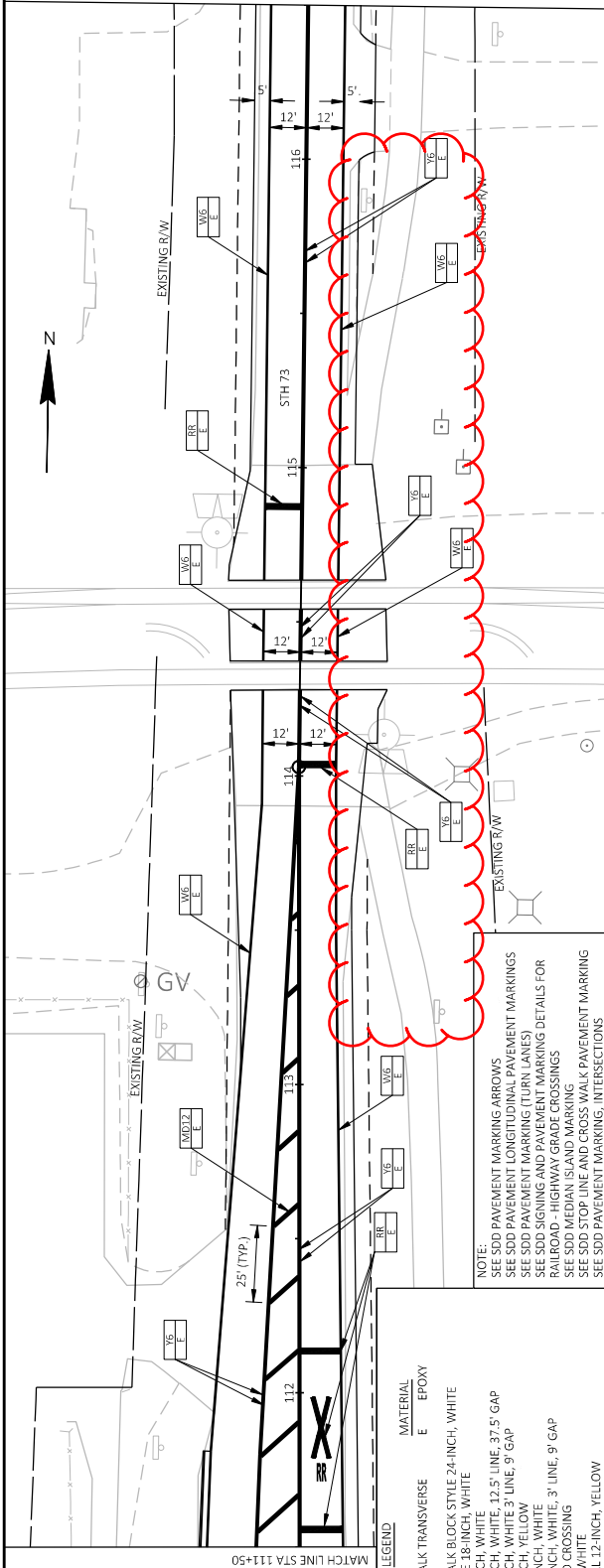
PROJECT NO: 6320-00-75	COUNTY: WOOD	SHEET 29	E
FILE NAME: G:\01\00093\00093715\CADD\00\SHEET\PLAN\021301-CK.DWG	HWY: STH 73	1 IN:100 FT	WISDOT\CADD\00-SHEET 44
LAYOUT NAME: 021301-ck	CONCORA GIRTEN	PLOT SCALE:	
	CONCORA GIRTEN	PLOT NAME:	
	2/19/2024 10:20 AM		

Addendum No. 01  
 ID 6320-00-75  
 Revised Sheet 62  
 March 20, 2024



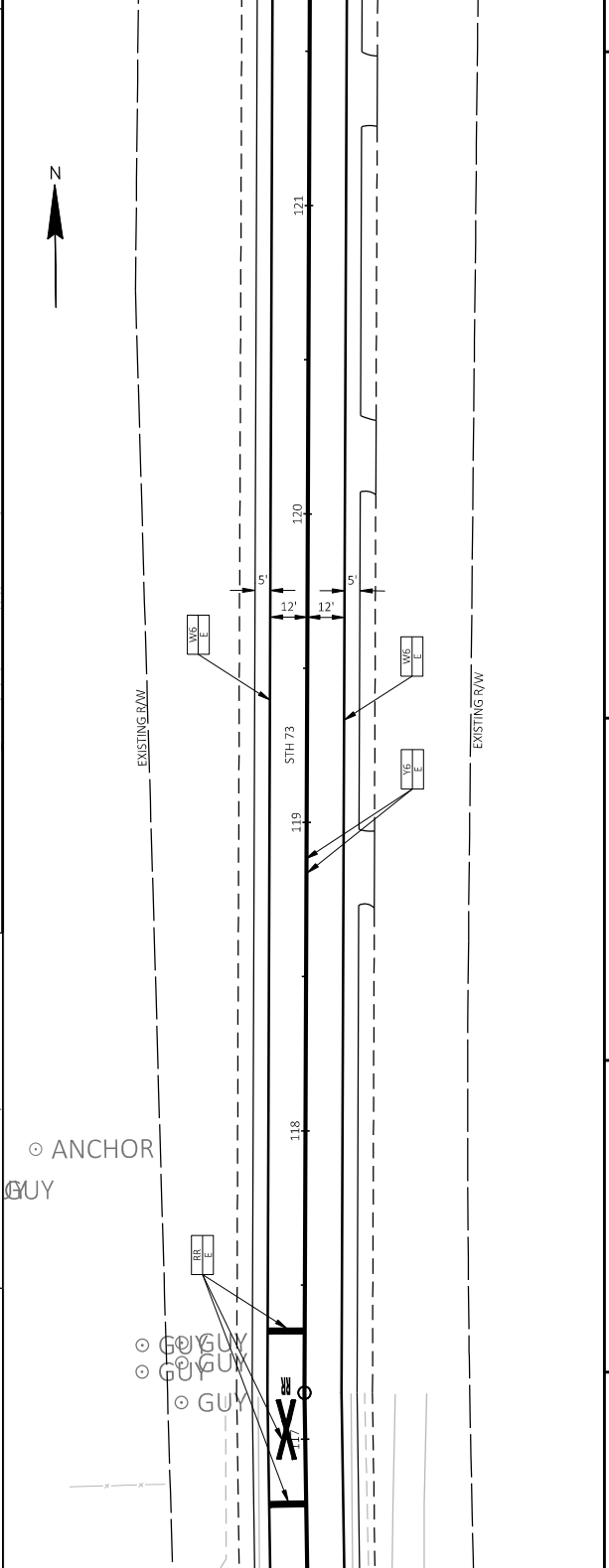
PROJECT NO: 6320-00-75	COUNTY: WOOD	EROSION CONTROL	SHEET 62	E
FILE NAME: G:\01\00093\0009375\CADD\SHETS\PLAN\022001-EC.DWG	HWY: STH 73	CONOR GIRTEN	1 IN=40 FT	WISDOT\CADD\SH-SHEET 44
LAYOUT NAME: 022001-EC	DATE: 2/19/2024 10:17 AM	EROSION CONTROL	EROSION CONTROL	

**Addendum No. 01**  
**ID 6320-00-75**  
**Revised Sheet 77**  
**March 20, 2024**



NOTE:  
 SEE SDD PAVEMENT MARKING ARROWS  
 SEE SDD PAVEMENT LOGIC/DIAGRAM PAVEMENT MARKINGS  
 SEE SDD PAVEMENT SIGNING AND PAVEMENT MARKING DETAILS FOR  
 RAILROAD - HIGHWAY GRADE CROSSINGS  
 SEE SDD STOP LINE AND CROSS WALK PAVEMENT MARKING  
 SEE SDD PAVEMENT MARKING, INTERSECTIONS

MARKING	MATERIAL
MARKING CROSSWALK TRANSVERSE	E EPOXY
LINE 6-INCH, WHITE	
MARKING CROSSWALK BLOCK STYLE 24-INCH, WHITE	
MARKING STOP LINE 18-INCH, WHITE	
MARKING LINE 6-INCH, WHITE	
MARKING LINE 12.5	
MARKING LINE 6-INCH, WHITE 31.5' GAP	
MARKING LINE 6-INCH, WHITE 3' LINE, 9' GAP	
MARKING LINE 6-INCH, YELLOW	
MARKING LINE 10-INCH, WHITE	
MARKING LINE 10-INCH, WHITE, 3' LINE, 9' GAP	
MARKING RAILROAD CROSSING	
MARKING ARROW, WHITE	
MARKING DIAGONAL 12-INCH, YELLOW	



PROJECT NO: 6320-00-75  
 COUNTY: WOOD  
 HWY: STH 73  
 PAVEMENT MARKING  
 SHEET 77  
 FILE NAME: G:\01\00093\00093715\CADD\01\00093715\02\6320-00-75-01-PV.DWG  
 LAYOUT NAME: 064520-00  
 PLOT DATE: 2/19/2024 10:14 AM  
 PLOT BY: CONNOR GIRTEN  
 PLOT SCALE: 1 IN=40 FT  
 WISDOT/CADD/SHEET 44



NOTE: SEE THE FOLLOWING SDDS FOR MORE INFORMATION

- TRAFFIC CONTROL: ONE-WAY SIGNING FOR LESS THAN TWO-WAY UNDIVIDED ROAD OPEN TO TRAFFIC
- TRAFFIC CONTROL: ONE-WAY SIGNING FOR LANE CLOSURE OR LANE SHIFTING OPERATION
- TRAFFIC CONTROL: TWO-LANE TWO-WAY OPERATION
- TRAFFIC CONTROL: WORK ON SHOULDER OR PARKING LANE, UNDIVIDED ROADWAY
- TRAFFIC CONTROL: PEDESTRIAN ACCOMMODATION
- TRAFFIC CONTROL: ONE-WAY SIGNING

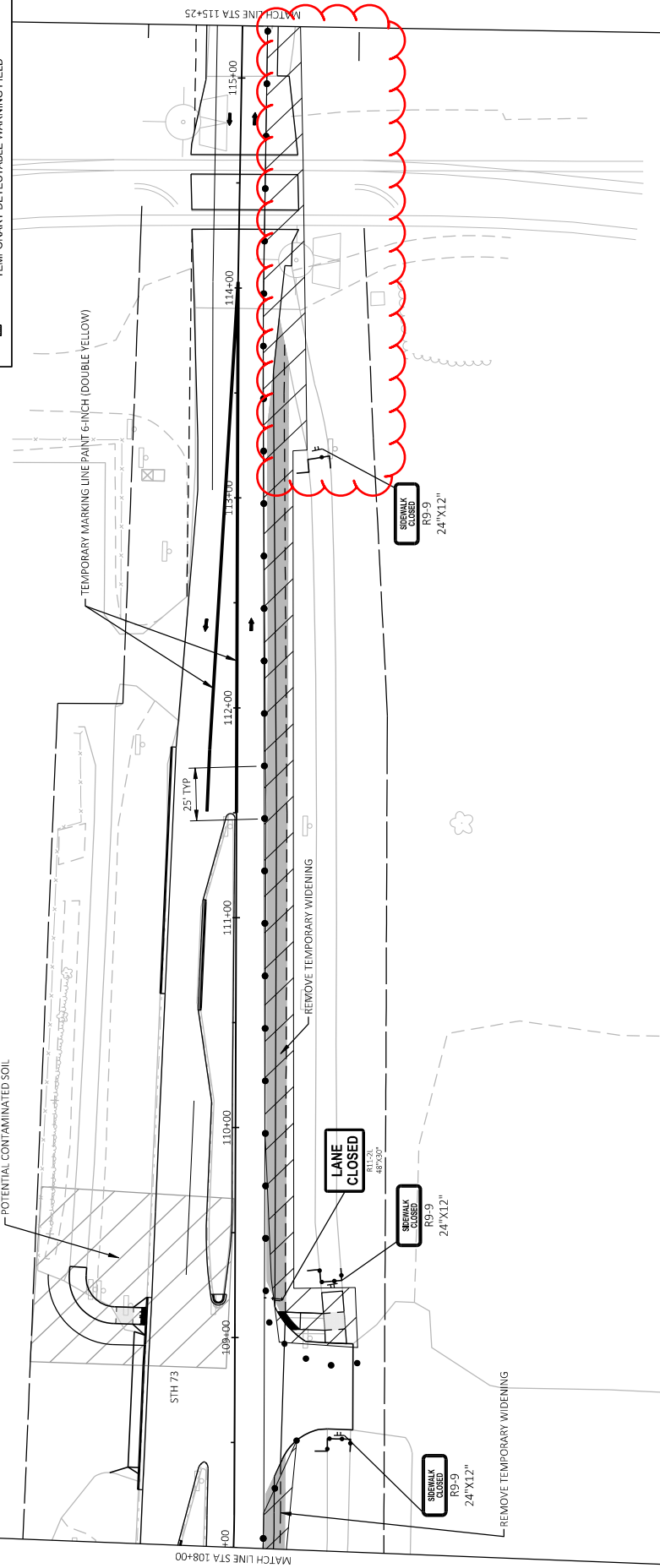
ALL SIGNS ARE 48"X48" UNLESS OTHERWISE NOTED  
 MAINTAIN ACCESS TO SIDE STREETS AND STH 73 NB THROUGH WORK ZONE DURING CONSTRUCTION.



Addendum No. 01  
 ID 6320-00-75  
 Revised Sheet 127  
 March 20, 2024

**LEGEND**

- TYPE III BARRICADE
- TYPE III BARRICADE WITH ATTACHED SIGN
- TRAFFIC CONTROL DRUM
- TRAFFIC CONTROL DRUM WITH TYPE C STEADY BURN LIGHT
- SIGN ON PERMANENT SUPPORT
- SIGN ON TEMPORARY SUPPORT
- DELINEATOR FLEXIBLE/TUBULAR MARKER
- WORK AREA
- DIRECTION OF TRAFFIC
- TEMPORARY PEDESTRIAN BARRICADE
- TEMPORARY PEDESTRIAN SURFACE ASPHALT
- TEMPORARY PEDESTRIAN SURFACE PLATE
- TEMPORARY PEDESTRIAN SURFACE MATTING
- TEMPORARY PEDESTRIAN CURB RAMP
- TEMPORARY DETECTABLE WARNING FIELD



PROJECT NO: 6320-00-75

HWY: STH 73

COUNTY: WOOD

TRAFFIC CONTROL - STAGE 3

SHEET 127

E

FILE NAME: G:\00\0009\00093715\CADD\SHEETPLAN\025106-TC.DWG

LAYOUT NAME: 05

PLOT DATE: 2/19/2024 10:12 AM

PLOT BY: CONNOR GIRTEN

PLOT SCALE: 1 IN=50 FT

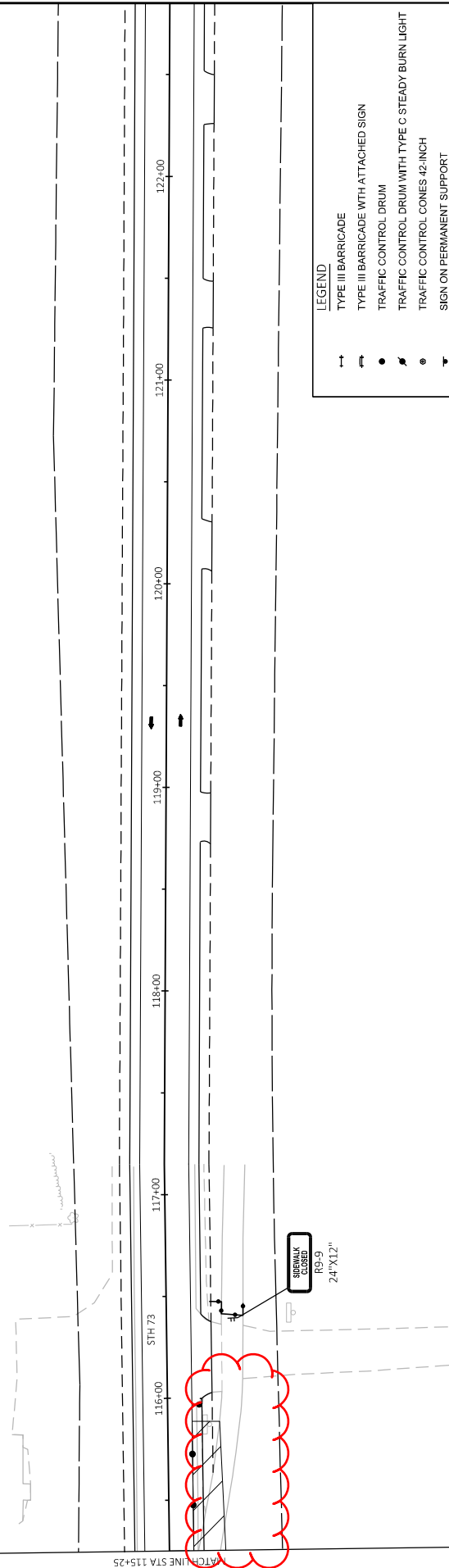
WSDOT/CADD/SHEET 42

Addendum No. 01  
ID 6320-00-75  
Revised Sheet 128  
March 20, 2024

NOTE: SEE THE FOLLOWING SDDS FOR MORE INFORMATION

- TRAFFIC CONTROL, ONE-WAY SIGNING OR LESS, TWO-WAY UNDIVIDED ROAD OPEN TO TRAFFIC
- TRAFFIC CONTROL, ONE-WAY SIGNING OR LESS, TWO-WAY UNDIVIDED ROAD CLOSED TO TRAFFIC
- TRAFFIC CONTROL, TWO-LANE TWO-WAY OPERATION
- TRAFFIC CONTROL, WORK ON SHOULDER OR PARKING LANE, UNDIVIDED ROADWAY
- TRAFFIC CONTROL, PEDESTRIAN ACCOMMODATION
- TRAFFIC CONTROL, ONE-WAY SIGNING

ALL SIGNS ARE 48"X48" UNLESS OTHERWISE NOTED  
MAINTAIN ACCESS TO SIDE STREETS AND STH 73 NB THROUGH WORK ZONE DURING CONSTRUCTION.



**LEGEND**

- TYPE III BARRICADE
- TYPE III BARRICADE WITH ATTACHED SIGN
- TRAFFIC CONTROL DRUM
- TRAFFIC CONTROL DRUM WITH TYPE C STEADY BURN LIGHT
- TRAFFIC CONTROL CONES 42-INCH
- SIGN ON PERMANENT SUPPORT
- SIGN ON TEMPORARY SUPPORT
- DELINEATOR FLEXIBLE/TUBULAR MARKER
- WORK AREA
- DIRECTION OF TRAFFIC
- TEMPORARY PEDESTRIAN BARRICADE
- TEMPORARY PEDESTRIAN SURFACE ASPHALT
- TEMPORARY PEDESTRIAN SURFACE PLATE
- TEMPORARY PEDESTRIAN SURFACE MATTING
- TEMPORARY PEDESTRIAN CURB RAMP
- TEMPORARY DETECTABLE WARNING FIELD



Addendum No. 01  
ID 6320-00-75  
Revised Sheet 135  
March 20, 2024

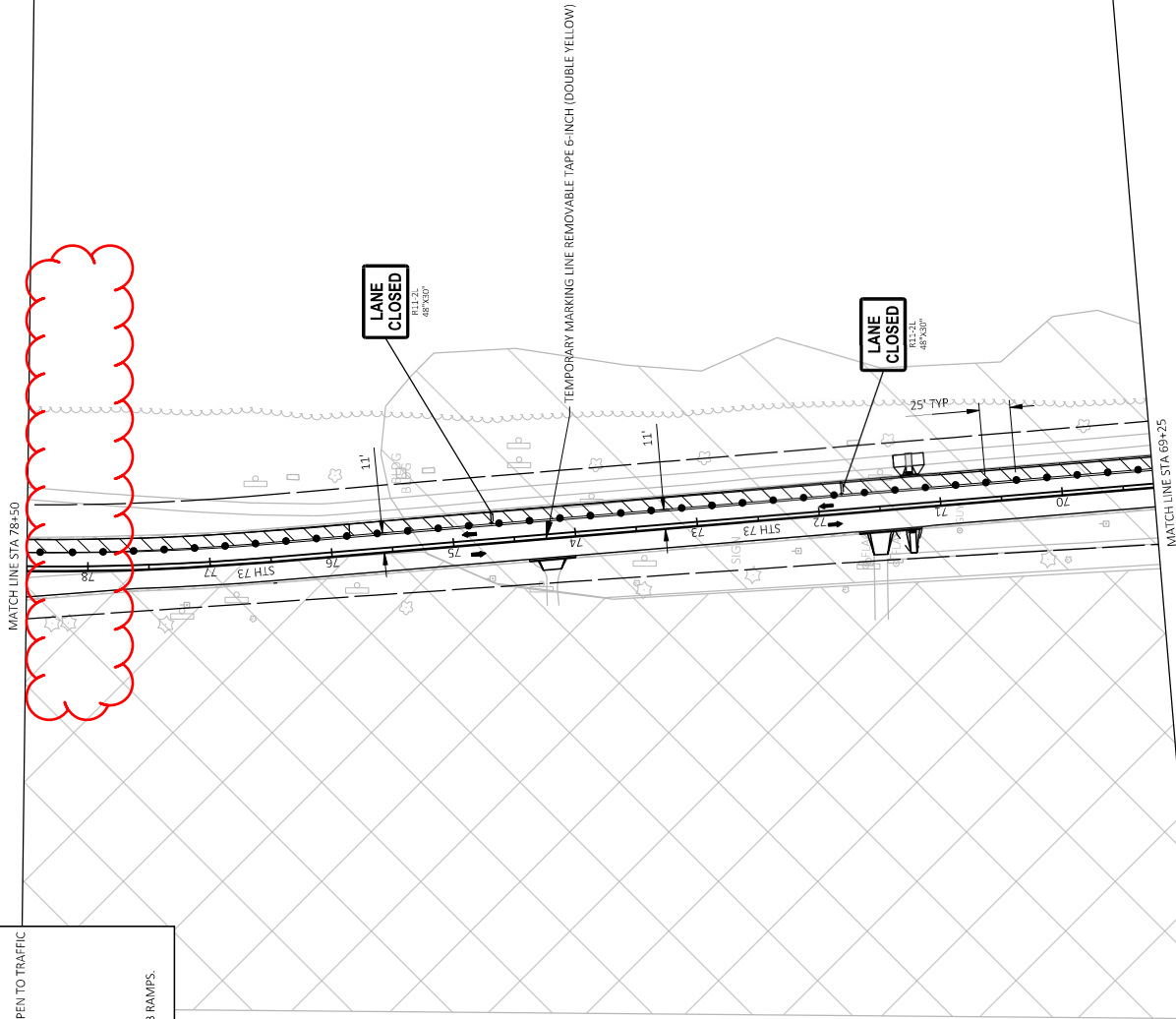
MATCH LINE STA 78+50

MATCH LINE STA 69+25

NOTE: SEE THE FOLLOWING SDDS FOR MORE INFORMATION

- TRAFFIC CONTROL - SINGLE BIGHT LANE CLOSURE, UNDIVIDED ROAD OPEN TO TRAFFIC
- TRAFFIC CONTROL - LANE CLOSURE WITH LANE SHIFTING OPERATION
- TRAFFIC CONTROL - TWO LANE TWO-WAY OPERATION
- TRAFFIC CONTROL - SINGLE BIGHT LANE CLOSURE, UNDIVIDED NON-FREEWAY/EXPRESSWAY
- TRAFFIC CONTROL - WORK ON SHOULDER OR PARKING LANE, UNDIVIDED ROADWAY
- TRAFFIC CONTROL - PEDESTRIAN ACCOMMODATION

ALL SIGNS ARE 48"x48" UNLESS OTHERWISE NOTED  
TRAFFIC DRUMS ON SIDE ROADS ARE TO BE IN SERVICE WHEN ACTIVITIES ARE OCCURRING AT THE CURB RAMPS.  
INSTALL GUARDRAIL ON NORTHBOUND LANE.



- LEGEND**
- ↑ TYPE III BARRICADE
  - ↓ TYPE III BARRICADE WITH ATTACHED SIGN
  - TRAFFIC CONTROL DRUM
  - ▬ TRAFFIC CONTROL DRUM WITH TYPE C STEADY BURN LIGHT
  - ⊞ SIGN ON PERMANENT SUPPORT
  - ⊞ SIGN ON TEMPORARY SUPPORT
  - DELINEATOR FLEXIBLE/TUBULAR MARKER
  - ▨ WORK AREA
  - DIRECTION OF TRAFFIC

PROJECT NO: 6320-00-75	COUNTY: WOOD	PLLOT BY: CONNOR GIRTEN	PLLOT NAME: 1 IN=100 FT	SHEET 135	E
FILE NAME: G:\0\0009\00093715\CADD\SHETS\PLAN\025109_TCLDWG	HWY: STH 73	PLLOT DATE: 2/27/2024 1:06 PM	PLLOT SCALE: 1 IN=100 FT		
LAYOUT NAME: .XDT					

CONTINUED FROM PREVIOUS COLUMN

REMOVING ASPHALTIC SURFACE

CATEGORY	STATION	TO	STATION	LOCATION	SY	SY	REMARKS
0010	17+53	-	17+82	RT	23	---	PAH
0010	17+85	-	17+95	MAINLINE, RT	34	---	
0010	17+85	-	17+95	MAINLINE, LT	---	3,440	FULL DEPTH MILL
0010	17+96	-	24+89	MAINLINE	---	---	
0010	17+98	-	17+83	RT	1	---	2' CURB OFFSET
0010	17+99	-	18+00	LT	1	---	2' CURB OFFSET
0010	18+97	-	19+06	LT	---	---	DWY
0010	19+42	-	19+49	RT	1	---	DWY
0010	20+49	-	20+88	RT	9	---	2' CURB OFFSET
0010	20+49	-	20+88	LT	19	---	PAH
0010	20+57	-	20+70	LT	16	---	TERRACE
0010	20+56	-	20+74	LT	11	---	2' CURB OFFSET
0010	20+57	-	21+24	LT	36	135	1ST ST
0010	21+07	-	21+27	LT	7	---	2' CURB OFFSET
0010	24+29	-	24+39	LT	6	---	2' CURB OFFSET
0010	24+24	-	24+89	LT	32	115	2ND ST
0010	24+67	-	24+89	LT	6	---	2' CURB OFFSET
0010	24+89	-	81+78	MAINLINE	---	26,421	
0010	27+82	-	27+87	LT	4	---	2' CURB OFFSET
0010	27+82	-	28+31	LT	34	67	3RD ST
0010	28+13	-	28+35	LT	7	---	2' CURB OFFSET
0010	31+09	-	31+20	LT	6	---	2' CURB OFFSET
0010	31+03	-	31+61	LT	33	78	4TH ST
0010	31+45	-	31+55	LT	4	---	2' CURB OFFSET
0010	34+45	-	34+57	LT	4	---	2' CURB OFFSET
0010	34+40	-	35+07	LT	4	97	5TH ST
0010	34+89	-	34+97	LT	4	---	2' CURB OFFSET
0010	37+79	-	38+23	RT	10	---	2' CURB OFFSET
0010	37+83	-	38+19	RT	22	---	DWY
0010	37+90	-	37+98	LT	4	---	2' CURB OFFSET
0010	37+79	-	38+48	LT	42	102	6TH ST
0010	38+32	-	38+64	LT	10	---	2' CURB OFFSET
0010	38+51	-	38+63	RT	3	---	2' CURB OFFSET
0010	41+15	-	41+53	RT	9	---	2' CURB OFFSET
0010	41+30	-	41+37	LT	4	---	2' CURB OFFSET
0010	41+18	-	41+92	LT	44	125	7TH ST
0010	41+74	-	41+81	LT	4	---	2' CURB OFFSET
0010	44+73	-	44+81	LT	4	---	2' CURB OFFSET
0010	44+61	-	45+32	LT	5	123	8TH ST
0010	45+12	-	45+20	LT	5	---	2' CURB OFFSET
0010	46+47	-	46+71	RT	6	---	2' CURB OFFSET
0010	46+48	-	46+69	RT	13	---	DWY
0010	48+24	-	48+31	LT	3	---	2' CURB OFFSET
0010	48+11	-	48+79	LT	33	111	9TH ST
0010	48+59	-	48+79	LT	8	---	2' CURB OFFSET
0010	8+59'K	-	8+79'K	LT	8	---	2' CURB OFFSET
0010	9+09'K	-	9+27'K	LT	7	---	2' CURB OFFSET
0010	50+28	-	51+53	LT	---	141	VILAS AVE
0010	51+65	-	51+74	LT	4	---	2' CURB OFFSET
0010	51+53	-	52+10	LT	31	61	10TH ST
0010	51+94	-	52+10	LT	7	---	2' CURB OFFSET
0010	54+79	-	55+00	LT	7	---	2' CURB OFFSET
0010	54+80	-	55+40	LT	---	67	11TH ST
0010	55+22	-	55+27	LT	4	---	2' CURB OFFSET
0010	58+02	-	58+23	RT	5	---	2' CURB OFFSET

CONTINUED IN NEXT COLUMN

REMOVING ASPHALTIC SURFACE

CATEGORY	STATION	TO	STATION	LOCATION	SY	SY	REMARKS
0010	58+02	-	58+22	RT	11	---	DWY
0010	58+12	-	58+30	LT	8	---	2' CURB OFFSET
0010	58+13	-	58+74	LT	28	78	12TH ST
0010	58+53	-	58+74	LT	2	---	2' CURB OFFSET
0010	61+59	-	61+61	LT	8	---	2' CURB OFFSET
0010	61+45	-	62+03	LT	31	66	13TH ST
0010	61+84	-	61+90	LT	5	---	2' CURB OFFSET
0010	67+70	-	68+08	LT	9	---	2' CURB OFFSET
0010	67+73	-	68+04	LT	53	---	DWY
0010	71+41	-	71+36	RT	28	---	MULTI-USE PATH
0010	71+16	-	71+31	RT	4	---	2' CURB OFFSET
0010	71+17	-	71+68	LT	12	---	2' CURB OFFSET
0010	71+36	-	71+65	LT	34	---	DWY
0010	74+01	-	74+39	LT	9	---	2' CURB OFFSET
0010	74+08	-	74+36	LT	19	---	DWY
0010	78+65	-	79+84	LT	38	288	WILHORN ST
0010	80+11	-	82+10	RT	44	---	2' CURB OFFSET
0010	80+16	-	82+10	LT	44	---	2' CURB OFFSET
0010	81+78	-	82+10	MAINLINE	79	---	B-71-28
0010	82+41	-	82+73	MAINLINE	87	---	B-71-28
0010	82+73	-	102+69	MAINLINE	---	7,598	
0010	102+69	-	111+50	MAINLINE, NB	55	2,664	
0010	103+09	-	104+35	LT	2	---	MEDIAN
0010	104+25	-	105+59	RT	64	206	OLD WISCONSIN 73
0010	106+56	-	108+02	LT	142	---	2' CURB OFFSET & MEDIAN
0010	105+23	-	111+50	MAINLINE, SB	---	1,499	
0010	108+25	-	109+27	RT	169	---	DWY
0010	108+27	-	109+19	LT	21	---	2' CURB OFFSET
0010	108+31	-	108+96	LT	38	---	DWY
0010	108+96	-	109+30	LT	79	---	MULTI-USE PATH
0010	108+97	-	109+22	RT	41	---	MULTI-USE PATH
0010	109+13	-	109+21	LT	4	---	2' CURB OFFSET/MEDIAN
0010	109+16	-	109+21	LT	2	---	MEDIAN
0010	110+55	-	111+30	LT	26	---	2' CURB OFFSET & MEDIAN
0010	110+46	-	111+64	LT	41	---	2' CURB OFFSET
0010	111+50	-	114+18	MAINLINE	---	1,171	
0010	114+18	-	114+28	MAINLINE	54	---	RAILROAD CROSSING
0010	114+37	-	114+54	MAINLINE	98	---	RAILROAD CROSSING
0010	114+64	-	114+74	MAINLINE	56	---	RAILROAD CROSSING
0010	114+74	-	123+93	MAINLINE	---	3,254	
0010	123+93	-	124+03	MAINLINE	34	---	FLUME
0010	11+29'K	-	---	RT	5	---	
TOTAL 0010					1,191	1,159	47,766

GRUBBING

CATEGORY	STATION	TO	STATION	LOCATION	SY	SY	REMARKS
0010	83+50	-	84+50	LT	25	---	
TOTAL 0010					25	---	

Addendum No. 01  
ID 6320-00-75  
Revised Sheet 144  
March 20, 2024

REMOVING INLETS & STORM SEWER

CATEGORY	STATION	LOCATION	204.0215		204.0220		204.0245.01		204.0270	
			REMOVING CATCH BASINS EACH	REMOVING INLETS EACH	REMOVING STORM SEWER (SIZE) (0.12- INCH) LF	REMOVING STORM SEWER (SIZE) (0.18- INCH) LF	REMOVING STORM SEWER (SIZE) (0.18- INCH) LF	ABANDONING CULVERT PIPES EACH		
0010	81+81	LT	---	1	---	---	---	---	---	
0010	81+81	RT	---	1	---	---	---	---	---	
0010	81+81	ROADWAY	---	---	---	---	---	---	1	
0010	81+81	RT	---	---	18	---	---	---	---	
0010	104+33	LT	1	---	---	---	---	---	---	
0010	108+35	LT	---	---	---	---	---	---	---	
TOTAL 0010			1	2	4	18	---	---	1	

DIVISION	FROM/TO STATION	LOCATION	205.0100 COMMON EXCAVATION (1)		SALVAGED/UNUSABLE PAVEMENT MATERIAL (4)	AVAILABLE MATERIAL (5)	UNEXPANDED FILL (13)	EXPANDED FILL (13)		WASTE	208.0100 BORROW
			CUT (2)	FILL (3)				FACTOR 1.25	MASS ORDINATE +/- (14)		
DIVISION 1	80+27.42+65.11	LT	39	0	8	30	49	60	15	6	11
CONCRETE RECONS SECTION	102+38.63+22.72	LT	26	0	4	27	18	23	195	195	0
DIVISION 1 SUBTOTAL			300	0	44	256	58	73	184	195	11
GRAND TOTAL			300	0	44	256	58	73	184	195	11

NOTES:  
 (1) COMMON EXCAVATION IS THE SUM OF THE CUT AND EBS EXCAVATION COLUMNS. ITEM NUMBER 205.0100  
 (2) SALVAGED/UNUSABLE PAVEMENT MATERIAL IS INCLUDED IN CUT.  
 (3) AVAILABLE MATERIAL = CUT - SALVAGED/UNUSABLE PAVEMENT MATERIAL  
 (4) SALVAGED/UNUSABLE PAVEMENT MATERIAL  
 (5) AVAILABLE MATERIAL = CUT - SALVAGED/UNUSABLE PAVEMENT MATERIAL  
 (13) EXPANDED FILL \* FILL FACTOR  
 (14) THE MASS ORDINATE +/- OR -QTY CALCULATED FOR THE DIVISION. PLUS QUANTITY INDICATES AN EXCESS OF MATERIAL WITHIN THE DIVISION. MINUS INDICATES A SHORTAGE OF MATERIAL WITHIN THE DIVISION.  
 (15) FACTORS USED TO COMPUTE ANTICIPATED WASTE AND THE COMPUTED WASTE VOLUME IDENTIFIED ARE FOR GENERAL INFORMATION ONLY.

PREPARE FOUNDATION FOR ASPHALTIC PAVING

CATEGORY	STATION	TO	STATION	211.0101.01	
				PREPARE FOUNDATION FOR ASPHALTIC PAVING (6320-00-75)	EACH
0010	PROJECT 6320-00-75			1	
0010	17+85		82+10	---	---
0010	82+41		124+03	---	---
TOTAL 0010				1	

PREPARE FOUNDATION FOR ASPHALTIC SHOULDERS

CATEGORY	STATION	TO	STATION	211.0400	
				PREPARE FOUNDATION FOR ASPHALTIC SHOULDERS	STA
0010	82+47		103+69	RT	22
0010	82+48		89+97	LT	8
0010	93+96		100+81	LT	7
0010	106+49		108+34	RT	2
0010	109+44		114+41	RT	10
0010	114+09		124+03	LT	10
0010	115+38		124+03	RT	9
TOTAL 0010					63

MISCELLANEOUS QUANTITIES

Addendum No. 01  
ID 6320-00-75  
Revised Sheet 145  
March 20, 2024

BASE AGGREGATE ITEMS

CATEGORY	STATION TO	STATION	LOCATION	305.0110		305.0120		624.0100		REMARKS
				BASE AGGREGATE DENSE 3/4-INCH	TON	BASE AGGREGATE DENSE 1 1/4-INCH	TON	WATER M/GAL		
0010	11+09'W	11+40'W	RT	--	--	9	0.2		SIDEWALK & C&G	
0010	17+46	17+83	RT	--	--	12	0.2		SIDEWALK C&G & PATH	
0010	17+86	18+13	LT	--	--	8	0.2		SIDEWALK & C&G	
0010	18+62	19+06	LT	--	--	5	0.1		RAMP	
0010	19+41	19+63	LT	--	--	5	0.1		RAMP	
0010	19+51	20+50	LT	--	--	11	0.2		C&G	
0010	20+48	20+71	LT	--	--	20	0.3		SIDEWALK & C&G	
0010	20+54	20+60	RT	--	--	12	0.2		SIDEWALK & C&G	
0010	21+13	21+36	LT	--	--	11	0.2		SIDEWALK & C&G	
0010	24+13	24+35	LT	--	--	10	0.2		SIDEWALK & C&G	
0010	24+72	25+13	LT	--	--	12	0.2		SIDEWALK & C&G	
0010	27+63	27+83	LT	--	--	7	0.2		SIDEWALK & C&G	
0010	28+17	28+43	LT	--	--	15	0.3		SIDEWALK & C&G	
0010	30+69	31+16	LT	--	--	11	0.2		SIDEWALK & C&G	
0010	31+49	31+74	LT	--	--	10	0.2		SIDEWALK & C&G	
0010	34+31	34+52	LT	--	--	8	0.2		SIDEWALK & C&G	
0010	34+93	35+18	LT	--	--	9	0.2		SIDEWALK & C&G	
0010	37+74	37+94	LT	--	--	6	0.1		SIDEWALK & C&G	
0010	38+36	38+65	LT	--	--	14	0.3		SIDEWALK & C&G	
0010	37+79	38+22	RT	--	--	8	0.2		C&G	
0010	38+54	38+60	RT	--	--	7	0.2		SIDEWALK & C&G	
0010	41+10	41+33	LT	--	--	6	0.2		SIDEWALK & C&G	
0010	41+78	41+97	LT	--	--	7	0.1		SIDEWALK & C&G	
0010	41+15	41+53	RT	--	--	8	0.2		C&G	
0010	44+52	44+76	LT	--	--	7	0.2		SIDEWALK & C&G	
0010	45+16	45+40	LT	--	--	8	0.2		SIDEWALK & C&G	
0010	46+47	46+71	RT	--	--	5	0.1		C&G	
0010	48+08	48+27	LT	--	--	6	0.1		SIDEWALK & C&G	
0010	8+57'K	8+75'K	LT	--	--	12	0.2		SIDEWALK & C&G	
0010	9+13'K	9+63'K	LT	--	--	15	0.3		SIDEWALK & C&G	
0010	51+51	51+70	LT	--	--	6	0.1		SIDEWALK & C&G	
0010	51+98	52+16	LT	--	--	8	0.2		SIDEWALK & C&G	
0010	54+77	54+95	LT	--	--	9	0.2		SIDEWALK & C&G	
0010	58+26	58+43	LT	--	--	6	0.1		SIDEWALK & C&G	
0010	58+09	58+26	LT	--	--	9	0.2		SIDEWALK & C&G	
0010	58+57	58+74	LT	--	--	9	0.2		SIDEWALK & C&G	
0010	58+02	58+23	RT	--	--	4	0.1		C&G	
0010	61+41	61+57	LT	--	--	5	0.1		SIDEWALK & C&G	
0010	61+87	62+05	LT	--	--	7	0.2		SIDEWALK & C&G	
0010	67+70	68+08	LT	--	--	8	0.2		C&G	
0010	71+21	71+26	RT	--	--	11	0.2		PATH & C&G	
0010	71+22	71+27	LT	--	--	14	0.3		SIDEWALK & C&G	
0010	74+01	74+39	LT	--	--	8	0.2		C&G	
0010	80+11	82+09	RT	--	--	37	0.6		C&G	
0010	80+16	82+09	LT	--	--	36	0.6		C&G	
0010	82+41	84+65	LT & RT	42	--	--	0.7		GUARDRAIL	
0010	102+69	105+24	LT	--	--	283	4.3		RECONSTRUCT	
0010	106+54	108+02	LT	--	--	52	0.8		C&G	
0010	108+27	109+19	LT	--	--	18	0.3		C&G	
0010	108+96	109+33	LT	--	--	23	0.4		SIDEWALK & ASP SURFACE	
0010	108+97	109+21	RT	--	--	7	0.2		PATH	
0010	109+15	109+16	LT	--	--	3	0.1		C&G	
0010	110+55	111+09	LT	--	--	20	0.3		C&G	
0010	110+63	111+81	LT	--	--	22	0.4		C&G	
0010	109+15	109+16	LT	--	--	3	0.1		C&G	
0010	109+15	111+09	LT	--	--	20	0.3		C&G	
0010	109+15	111+81	LT	--	--	22	0.4		C&G	
0010	109+15	111+09	LT	--	--	20	0.3		C&G	
0010	109+15	111+81	LT	--	--	22	0.4		C&G	
0010	109+15	111+09	LT	--	--	20	0.3		C&G	
0010	109+15	111+81	LT	--	--	22	0.4		C&G	
0010	109+15	111+09	LT	--	--	20	0.3		C&G	
0010	109+15	111+81	LT	--	--	22	0.4		C&G	
0010	109+15	111+09	LT	--	--	20	0.3		C&G	
0010	109+15	111+81	LT	--	--	22	0.4		C&G	
0010	109+15	111+09	LT	--	--	20	0.3		C&G	
0010	109+15	111+81	LT	--	--	22	0.4		C&G	
0010	109+15	111+09	LT	--	--	20	0.3		C&G	
0010	109+15	111+81	LT	--	--	22	0.4		C&G	
0010	109+15	111+09	LT	--	--	20	0.3		C&G	
0010	109+15	111+81	LT	--	--	22	0.4		C&G	
0010	109+15	111+09	LT	--	--	20	0.3		C&G	
0010	109+15	111+81	LT	--	--	22	0.4		C&G	
0010	109+15	111+09	LT	--	--	20	0.3		C&G	
0010	109+15	111+81	LT	--	--	22	0.4		C&G	
0010	109+15	111+09	LT	--	--	20	0.3		C&G	
0010	109+15	111+81	LT	--	--	22	0.4		C&G	
0010	109+15	111+09	LT	--	--	20	0.3		C&G	
0010	109+15	111+81	LT	--	--	22	0.4		C&G	
0010	109+15	111+09	LT	--	--	20	0.3		C&G	
0010	109+15	111+81	LT	--	--	22	0.4		C&G	
0010	109+15	111+09	LT	--	--	20	0.3		C&G	
0010	109+15	111+81	LT	--	--	22	0.4		C&G	
0010	109+15	111+09	LT	--	--	20	0.3		C&G	
0010	109+15	111+81	LT	--	--	22	0.4		C&G	
0010	109+15	111+09	LT	--	--	20	0.3		C&G	
0010	109+15	111+81	LT	--	--	22	0.4		C&G	
0010	109+15	111+09	LT	--	--	20	0.3		C&G	
0010	109+15	111+81	LT	--	--	22	0.4		C&G	
0010	109+15	111+09	LT	--	--	20	0.3		C&G	
0010	109+15	111+81	LT	--	--	22	0.4		C&G	
0010	109+15	111+09	LT	--	--	20	0.3		C&G	
0010	109+15	111+81	LT	--	--	22	0.4		C&G	
0010	109+15	111+09	LT	--	--	20	0.3		C&G	
0010	109+15	111+81	LT	--	--	22	0.4		C&G	
0010	109+15	111+09	LT	--	--	20	0.3		C&G	
0010	109+15	111+81	LT	--	--	22	0.4		C&G	
0010	109+15	111+09	LT	--	--	20	0.3		C&G	
0010	109+15	111+81	LT	--	--	22	0.4		C&G	
0010	109+15	111+09	LT	--	--	20	0.3		C&G	
0010	109+15	111+81	LT	--	--	22	0.4		C&G	
0010	109+15	111+09	LT	--	--	20	0.3		C&G	
0010	109+15	111+81	LT	--	--	22	0.4		C&G	
0010	109+15	111+09	LT	--	--	20	0.3		C&G	
0010	109+15	111+81	LT	--	--	22	0.4		C&G	
0010	109+15	111+09	LT	--	--	20	0.3		C&G	
0010	109+15	111+81	LT	--	--	22	0.4		C&G	
0010	109+15	111+09	LT	--	--	20	0.3		C&G	
0010	109+15	111+81	LT	--	--	22	0.4		C&G	
0010	109+15	111+09	LT	--	--	20	0.3		C&G	
0010	109+15	111+81	LT	--	--	22	0.4		C&G	
0010	109+15	111+09	LT	--	--	20	0.3		C&G	
0010	109+15	111+81	LT	--	--	22	0.4		C&G	
0010	109+15	111+09	LT	--	--	20	0.3		C&G	
0010	109+15	111+81	LT	--	--	22	0.4		C&G	
0010	109+15	111+09	LT	--	--	20	0.3		C&G	
0010	109+15	111+81	LT	--	--	22	0.4		C&G	
0010	109+15	111+09	LT	--	--	20	0.3		C&G	
0010	109+15	111+81	LT	--	--	22	0.4		C&G	
0010	109+15	111+09	LT	--	--	20	0.3		C&G	
0010	109+15	111+81	LT	--	--	22	0.4		C&G	
0010	109+15	111+09	LT	--	--	20	0.3		C&G	
0010	109+15	111+81	LT	--	--	22	0.4		C&G	
0010	109+15	111+09	LT	--	--	20	0.3		C&G	
0010	109+15	111+81	LT	--	--	22	0.4		C&G	
0010	109+15	111+09	LT	--	--	20	0.3		C&G	
0010	109+15	111+81	LT	--	--	22	0.4		C&G	
0010	109+15	111+09	LT	--	--	20	0.3		C&G	
0010	109+15	111+81	LT	--	--	22	0.4		C&G	
0010	109+15	111+09	LT	--	--	20	0.3		C&G	
0010	109+15	111+81	LT	--	--	22	0.4		C&G	
0010	109+15	111+09	LT	--	--	20	0.3		C&G	
0010	109+15	111+81	LT	--	--	22	0.4		C&G	
0010	109+15	111+09	LT	--	--	20	0.3		C&G	
0010	109+15	111+81	LT	--	--	22	0.4		C&G	
0010	109+15	111+09	LT	--	--	20	0.3		C&G	
0010	109+15	111+81	LT	--	--	22	0.4		C&G	
0010	109+15	111+09	LT	--	--	20	0.3		C&G	
0010	109+15	111+81	LT	--	--	22	0.4		C&G	
0010	109+15	111+09	LT	--	--	20	0.3		C&G	
0010	109+15	111+81	LT	--	--	22	0.4		C&G	
0010	109+15	111+09	LT	--	--	20	0.3		C&G	
0010	109+15	111+81	LT	--	--	22	0.4		C&G	
0010	109+15	111+09	LT	--	--	20	0.3		C&G	
0010	109+15	111+81	LT	--	--	22	0.4		C&G	
0010	109+15	111+09	LT	--	--	20	0.3		C&G	
0010	109+15	111+81	LT	--	--	22	0.4		C&G	
0010	109+15	111+09	LT	--	--	20	0.3		C&G	
0010	109+15	111+81	LT	--	--	22	0.4		C&G	
0010	109+15	111+09	LT	--	--	20	0.3		C&G	
0010	109+1									

Addendum No. 01  
ID 6320-00-75  
Revised Sheet 146  
March 20, 2024

HMA ITEMS

CATEGORY	STATION	TO	STATION	LOCATION	THICKNESS (IN)	450.4000 HMA COLD WEATHER PAVING	455.0605 TACK COAT	460.6224 HMA PAVEMENT 4 MT 58-28 S	460.6424 HMA PAVEMENT 4 MT 58-28 H	465.0105 ASPHALTIC SURFACE	465.0110 ASPHALTIC SURFACE PATCHING	465.0125 ASPHALTIC SURFACE TEMPORARY	REMARKS
0010	17+78	-	17+83	RT	5.50	---	---	---	---	1	---	---	C&G PRIOR TO MILL & OVERLAY
0010	17+99	-	18+00	LT	5.50	---	---	---	---	1	---	---	C&G PRIOR TO MILL & OVERLAY
0010	17+54	-	17+82	RT	2.00	---	---	---	---	3	---	---	PATH
0010	20+49	-	20+88	RT	5.50	---	---	---	---	3	---	---	C&G PRIOR TO MILL & OVERLAY
0010	20+49	-	20+65	RT	2.00	---	---	---	---	2	---	---	PATH
0010	20+50	-	20+74	LT	5.50	---	---	---	---	4	---	---	C&G PRIOR TO MILL & OVERLAY
0010	20+56	-	20+70	LT	2.00	---	---	---	---	2	---	---	TERRACE
0010	21+07	-	21+27	LT	5.50	---	---	---	---	2	---	---	C&G PRIOR TO MILL & OVERLAY
0010	24+29	-	24+39	LT	5.50	---	---	---	---	2	---	---	C&G PRIOR TO MILL & OVERLAY
0010	24+67	-	24+89	LT	5.50	---	---	---	---	2	---	---	C&G PRIOR TO MILL & OVERLAY
0010	27+82	-	27+87	LT	5.50	---	---	---	---	1	---	---	C&G PRIOR TO MILL & OVERLAY
0010	28+13	-	28+35	LT	5.50	---	---	---	---	3	---	---	C&G PRIOR TO MILL & OVERLAY
0010	31+09	-	31+20	LT	5.50	---	---	---	---	2	---	---	C&G PRIOR TO MILL & OVERLAY
0010	31+45	-	31+55	LT	5.50	---	---	---	---	2	---	---	C&G PRIOR TO MILL & OVERLAY
0010	34+45	-	34+57	LT	5.50	---	---	---	---	2	---	---	C&G PRIOR TO MILL & OVERLAY
0010	34+89	-	34+97	LT	5.50	---	---	---	---	2	---	---	C&G PRIOR TO MILL & OVERLAY
0010	37+90	-	37+98	LT	5.50	---	---	---	---	4	---	---	C&G PRIOR TO MILL & OVERLAY
0010	37+79	-	38+23	RT	5.50	---	---	---	---	1	---	---	C&G PRIOR TO MILL & OVERLAY
0010	38+32	-	38+64	LT	5.50	---	---	---	---	3	---	---	C&G PRIOR TO MILL & OVERLAY
0010	38+51	-	38+63	RT	5.50	---	---	---	---	1	---	---	C&G PRIOR TO MILL & OVERLAY
0010	41+30	-	41+37	LT	5.50	---	---	---	---	1	---	---	C&G PRIOR TO MILL & OVERLAY
0010	41+51	-	41+53	RT	5.50	---	---	---	---	3	---	---	C&G PRIOR TO MILL & OVERLAY
0010	41+74	-	41+81	LT	5.50	---	---	---	---	2	---	---	C&G PRIOR TO MILL & OVERLAY
0010	44+73	-	44+81	LT	5.50	---	---	---	---	1	---	---	C&G PRIOR TO MILL & OVERLAY
0010	45+12	-	45+20	LT	5.50	---	---	---	---	2	---	---	C&G PRIOR TO MILL & OVERLAY
0010	46+47	-	46+71	RT	5.50	---	---	---	---	2	---	---	C&G PRIOR TO MILL & OVERLAY
0010	48+24	-	48+31	LT	5.50	---	---	---	---	1	---	---	C&G PRIOR TO MILL & OVERLAY
0010	48+59	-	48+79	LT	5.50	---	---	---	---	3	---	---	C&G PRIOR TO MILL & OVERLAY
0010	9+09'K	-	9+27'K	LT	5.50	---	---	---	---	3	---	---	C&G PRIOR TO MILL & OVERLAY
0010	8+59'K	-	8+79'K	LT	5.50	---	---	---	---	3	---	---	C&G PRIOR TO MILL & OVERLAY
0010	51+65	-	51+74	LT	5.50	---	---	---	---	2	---	---	C&G PRIOR TO MILL & OVERLAY
0010	51+94	-	52+10	LT	5.50	---	---	---	---	3	---	---	C&G PRIOR TO MILL & OVERLAY
0010	54+79	-	55+00	LT	5.50	---	---	---	---	3	---	---	C&G PRIOR TO MILL & OVERLAY
0010	55+22	-	55+27	LT	5.50	---	---	---	---	2	---	---	C&G PRIOR TO MILL & OVERLAY
0010	58+12	-	58+30	LT	5.50	---	---	---	---	3	---	---	C&G PRIOR TO MILL & OVERLAY
0010	58+53	-	58+74	LT	5.50	---	---	---	---	3	---	---	C&G PRIOR TO MILL & OVERLAY
0010	58+02	-	58+23	RT	5.50	---	---	---	---	2	---	---	C&G PRIOR TO MILL & OVERLAY
0010	61+59	-	61+61	LT	5.50	---	---	---	---	1	---	---	C&G PRIOR TO MILL & OVERLAY
0010	61+84	-	61+90	LT	5.50	---	---	---	---	2	---	---	C&G PRIOR TO MILL & OVERLAY
0010	67+70	-	68+08	LT	5.50	---	---	---	---	3	---	---	C&G PRIOR TO MILL & OVERLAY
0010	71+11	-	71+36	RT	5.50	---	---	---	---	9	---	---	PATH
0010	71+16	-	71+31	RT	5.50	---	---	---	---	2	---	---	C&G PRIOR TO MILL & OVERLAY
0010	71+17	-	71+68	LT	5.50	---	---	---	---	4	---	---	C&G PRIOR TO MILL & OVERLAY
0010	74+01	-	74+39	LT	5.50	---	---	---	---	3	---	---	C&G PRIOR TO MILL & OVERLAY
0010	80+16	-	82+10	LT	5.50	---	---	---	---	14	---	---	C&G PRIOR TO MILL & OVERLAY
0010	80+11	-	82+10	RT	5.50	---	---	---	---	14	---	---	C&G PRIOR TO MILL & OVERLAY
0010	108+96	-	109+30	LT	2.00	---	---	---	---	7	---	---	4' OFFSET
0010	108+98	-	109+22	RT	2.00	---	---	---	---	4	---	---	PATH
0010	109+27	-	109+30	LT	2.00	---	---	---	---	3	---	---	PATH
0010	110+64	-	111+81	LT	2.00	---	---	---	---	3	---	---	C&G PRIOR TO MILL & OVERLAY
0010	101+47	-	113+86	RT	4.00	---	---	---	---	176	---	---	C&G PRIOR TO MILL & OVERLAY
0010	17+85	-	82+10	LOWER LAYER	1.75	387	2,249	3,149	---	---	---	---	TEMPORARY WIDENING
0010	82+10	-	82+10	UPPER LAYER	1.75	88	532	745	---	---	---	---	COLD PAVING STAGE 3 & 4
0010	82+41	-	101+03	LOWER LAYER	1.75	88	532	745	---	---	---	---	COLD PAVING STAGE 3 & 4
0010	82+41	-	101+03	UPPER LAYER	1.75	88	380	745	---	---	---	---	COLD PAVING STAGE 3 & 4

CONTINUED ON NEXT PAGE

PROJECT NO: 6320-00-75

HWY: STH 73

COUNTY: WOOD

MISCELLANEOUS QUANTITIES

SHEET: 146

E

CONTINUED FROM PREVIOUS PAGE

HMALITEMS

CATEGORY	STATION	TO	STATION	LOCATION	THICKNESS (IN)	TON	WEATHER PAVING	450.4000 HMA COLD WEATHER PAVING	TACK COAT GAL	455.0605	460.6224	460.6424	465.0105	465.0110	465.0125	REMARKS
0010	104+03	-	112+33	LOWER LAYER	2.25	309										SOUTHBOUND LANES STAGE 2
0010	104+03	-	112+33	UPPER LAYER	1.75	85			336							SOUTHBOUND LANES STAGE 2
0010	112+33	-	114+27	LOWER LAYER	1.75	10			61							COLD PAVING STAGE 3 & 4
0010	112+33	-	114+27	UPPER LAYER	1.75	10			43							COLD PAVING STAGE 3 & 4
0010	114+37	-	114+54	LOWER LAYER	1.75	2			5							COLD PAVING STAGE 3 & 4
0010	114+37	-	114+54	UPPER LAYER	1.75	5			10							COLD PAVING STAGE 3 & 4
0010	114+64	-	124+03	LOWER LAYER	1.75	47			259							COLD PAVING STAGE 3 & 4
0010	114+64	-	124+03	UPPER LAYER	1.75	47			185							COLD PAVING STAGE 3 & 4
0010	104+09	-	104+35	MEDIAN	2.00											MEDIAN ISLAND BEHIND C&G
0010	106+55	-	108+02	MEDIAN	2.00											MEDIAN ISLAND BEHIND C&G
0010	110+56	-	111+08	MEDIAN	2.00											MEDIAN ISLAND BEHIND C&G
0010	17+85	-	124+03	UNDISTRIBUTED	VARIES				74							DISTRESSED MILLING AREAS
						1,262			5,720		5,151	4,973	169	224		176
					TOTAL 0010											

DRIVENWAYS

CATEGORY	STATION	LOCATION	THICKNESS (IN)	ENTRANCES	TON	CONCRETE DRIVEWAY 6-INCH	SY	REMARKS
0010	19+01	LT	2	1	1	4	4	CE
0010	19+46	LT	2	1	1	10	10	CE
0010	38+05	RT	2	3	3			CE
0010	41+34	RT	2	3	3			CE
0010	46+55	RT	2	2	2			CE
0010	58+13	RT	2	2	2			CE
0010	67+89	LT	2	6	6			CE
0010	71+52	LT	2	4	4			CE
0010	74+21	LT	2	2	2			CE
0010	83+78	RT	2	10	10			PE
0010	108+68	LT	2	7	7			CE
0010	108+77	RT	2	29	29			CE
					70		14	
					TOTAL 0010			

APRON/ENDWALLS

CATEGORY	STATION	STRUCTURE	LOCATION	INCH	EACH
0010	81+66	2.2	39.6 RT		1
0010	81+68	1.1	40.5 LT		1
			TOTAL 0010		2

520.1012 APRON ENDWALLS FOR CULVERT PIPE 12

Addendum No. 01  
ID 6320-00-75  
Revised Sheet 147  
March 20, 2024

PROJECT NO: 6320-00-75

HWY: STH 73

COUNTY: WOOD

MISCELLANEOUS QUANTITIES

SHEET: 147

E



SIDEWALK ITEMS

FOR INFORMATION ONLY

650.9000

602.0605

602.0505

602.0405

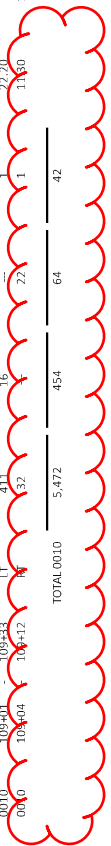
CONCRETE

602.0305

602.0205

602.0105

CATEGORY	STATION	TO	STATION	LOCATION	SF	CONCRETE SIDEWALK 4-INCH YELLOW	CONCRETE SIDEWALK 4-INCH YELLOW	CONCRETE SIDEWALK 4-INCH YELLOW	CONCRETE SIDEWALK 4-INCH YELLOW	CONCRETE SIDEWALK 4-INCH YELLOW	CONSTRUCTION STAKING CURB RAMPS	CUT	FILL
0010	11+09'A	-	11+40'A	RT	280	---	---	---	---	---	1	7.70	---
0010	17+46	-	17+83	RT	85	---	42	---	---	---	2	9.10	---
0010	17+86	-	18+13	LT	206	---	12	---	---	---	1	8.20	---
0010	18+82	-	19+01	LT	103	---	12	---	---	---	---	---	---
0010	19+47	-	19+62	LT	84	---	---	---	---	---	---	---	---
0010	20+48	-	20+71	LT	279	---	24	---	---	---	2	10.50	---
0010	20+54	-	20+60	RT	20	---	---	---	---	---	1	8.00	---
0010	21+13	-	21+36	LT	175	---	---	---	---	---	1	7.20	---
0010	24+13	-	24+35	LT	163	---	---	---	---	---	1	6.50	---
0010	24+72	-	25+13	LT	216	---	---	---	---	---	1	7.30	---
0010	27+63	-	27+83	LT	134	---	---	---	---	---	1	6.13	---
0010	28+17	-	28+43	LT	315	---	---	---	---	---	1	8.97	---
0010	30+89	-	31+16	LT	210	---	---	---	---	---	1	5.60	---
0010	31+49	-	31+74	LT	197	---	---	---	---	---	1	6.15	---
0010	34+31	-	34+52	LT	134	---	---	---	---	---	1	5.60	---
0010	34+93	-	35+18	LT	185	---	---	---	---	---	1	6.50	---
0010	37+74	-	37+94	LT	106	---	---	---	---	---	1	5.90	---
0010	38+36	-	38+65	LT	204	---	---	---	---	---	2	11.65	---
0010	38+54	-	38+60	RT	120	---	---	---	---	---	2	10.36	---
0010	41+10	-	41+33	LT	126	---	---	---	---	---	1	6.91	---
0010	41+78	-	41+97	LT	103	---	---	---	---	---	1	6.10	---
0010	44+52	-	44+76	LT	133	---	---	---	---	---	1	7.12	---
0010	45+16	-	45+40	LT	135	---	---	---	---	---	1	7.76	---
0010	48+08	-	48+27	LT	86	---	---	---	---	---	1	5.62	---
0010	84+7K	-	84+75K	LT	168	---	20	---	---	---	2	9.84	---
0010	9+13K	-	9+63K	LT	271	---	20	---	---	---	2	17.20	0.70
0010	51+51	-	51+70	LT	84	---	---	---	---	---	1	4.60	---
0010	51+98	-	52+16	LT	87	---	---	---	---	---	1	5.40	---
0010	54+77	-	54+95	LT	85	---	---	---	---	---	1	8.40	---
0010	55+26	-	55+43	LT	84	---	---	---	---	---	1	4.30	---
0010	58+09	-	58+26	LT	81	---	---	---	---	---	1	4.70	---
0010	58+57	-	58+74	LT	81	---	---	---	---	---	1	5.70	---
0010	61+41	-	61+57	LT	80	---	---	---	---	---	1	5.00	---
0010	61+87	-	62+05	LT	82	---	---	---	---	---	1	5.60	---
0010	71+21	-	71+26	RT	35	---	---	---	---	---	1	13.60	---
0010	71+22	-	71+27	LT	93	---	---	---	---	---	1	9.20	---
0010	109+01	-	109+43	LT	411	---	16	---	---	---	1	27.20	---
0010	109+04	-	109+12	LT	32	---	72	---	---	---	1	11.60	1.50
TOTAL 0010					5,472		454				42		



Addendum No. 01  
 ID 6320-00-75  
 Revised Sheet 149  
 March 20, 2024

Addendum No. 01  
ID 6320-00-75  
Revised Sheet 151  
March 20, 2024

RESTORATION

CATEGORY	STATION	TO	STATION	LOCATION	SALVAGED TOPSOIL SY	EROSION MAT TYPE B SY	FERTILIZER TYPE B CWT	SEEDING MIXTURE NO. 20 LB	SEEDING MIXTURE NO. 40 LB	SEEDING TEMPORARY LB	SEED WATER MEAL	REINSTALL ROCK LANDSCAPING SF	SPECIAL (01) REMOVE/ SALVAGE AND TOPSOIL FOR LAWN TYPE TURF) SY	SPV.0165.01 SPECIAL (02) PREPARING	SPV.0180.02	REMARKS
0010	11+08'A	-	11+30'A	RT	7	7	0.1	0.1	0.2	0.1	1	---	---	---	7	CURB RAMP
0010	17+42	-	17+42	RT	9	9	0.1	0.2	0.2	0.2	1	---	---	---	9	CURB RAMP
0010	17+86	-	18+13	LT	22	22	0.1	0.4	0.4	0.3	1	---	---	---	22	CURB RAMP
0010	18+81	-	18+98	LT	11	11	---	0.2	0.2	0.2	1	---	---	---	11	DWY
0010	19+49	-	20+55	LT	---	---	---	---	---	---	---	---	---	---	---	DWY, C&G, AND CURB RAMP
0010	20+49	-	20+68	RT	20	20	0.1	0.4	0.4	0.3	1	---	---	---	20	CURB RAMP
0010	21+09	-	21+36	LT	20	20	0.1	0.4	0.4	0.3	1	---	---	---	20	CURB RAMP
0010	24+13	-	24+35	LT	16	16	0.1	0.3	0.3	0.3	1	---	---	---	16	CURB RAMP
0010	24+70	-	25+13	LT	19	19	0.1	0.4	0.4	0.3	1	---	---	---	19	CURB RAMP
0010	27+63	-	27+85	LT	10	10	0.1	0.2	0.2	0.2	1	---	---	---	10	CURB RAMP
0010	28+17	-	28+43	LT	15	15	0.1	0.3	0.3	0.4	1	---	---	---	15	CURB RAMP
0010	30+89	-	31+16	LT	26	26	0.1	0.5	0.4	0.4	1	---	---	---	26	CURB RAMP
0010	31+49	-	31+74	LT	18	18	0.1	0.4	0.3	0.3	1	---	---	---	18	CURB RAMP
0010	34+31	-	34+53	LT	9	9	0.1	0.2	0.2	0.2	1	---	---	---	9	CURB RAMP
0010	34+93	-	35+18	LT	18	18	0.1	0.4	0.4	0.3	1	---	---	---	18	CURB RAMP
0010	37+25	-	37+96	LT	10	10	0.1	0.2	0.2	0.2	1	---	---	---	10	CURB RAMP
0010	37+77	-	38+24	RT	4	4	0.1	0.1	0.1	0.1	1	---	---	---	4	DWY
0010	38+35	-	38+65	LT	22	22	0.1	0.4	0.3	0.3	1	---	---	---	22	CURB RAMP
0010	38+48	-	38+66	RT	21	21	0.1	0.4	0.4	0.3	1	---	---	---	21	CURB RAMP
0010	41+11	-	41+34	LT	11	11	0.1	0.2	0.2	0.2	1	---	---	---	11	CURB RAMP
0010	41+12	-	41+56	RT	4	4	0.1	0.1	0.1	0.1	1	---	---	---	4	DWY
0010	41+77	-	41+97	LT	9	9	0.1	0.2	0.2	0.2	1	---	---	---	9	CURB RAMP
0010	44+52	-	44+78	LT	14	14	0.1	0.3	0.3	0.2	1	---	---	---	14	CURB RAMP
0010	45+15	-	45+40	LT	16	16	0.1	0.3	0.3	0.3	1	---	---	---	16	CURB RAMP
0010	46+45	-	46+74	RT	4	4	0.1	0.1	0.1	0.1	1	---	---	---	4	DWY
0010	48+09	-	48+28	LT	11	11	0.1	0.2	0.2	0.2	1	---	---	---	11	CURB RAMP
0010	8+38'K	-	8+77'K	LT	47	47	0.1	0.9	0.7	0.7	2	---	---	---	47	CURB RAMP & TEMP PED ACCESS
0010	8+38'K	-	8+43'K	RT	6	6	0.1	0.1	0.1	0.1	1	---	---	---	6	TEMP PED ACCESS
0010	9+11'K	-	9+68'K	LT	77	77	0.1	1.4	1.1	1.1	2	---	---	---	77	CURB RAMP
0010	51+38	-	51+73	LT	15	15	0.1	0.3	0.2	0.2	1	---	---	---	15	CURB RAMP & TEMP PED ACCESS
0010	51+97	-	52+30	LT	19	19	0.1	0.4	0.3	0.3	1	---	---	---	19	CURB RAMP & TEMP PED ACCESS
0010	54+64	-	54+97	LT	23	23	0.1	0.5	0.4	0.4	1	---	---	---	23	CURB RAMP & TEMP PED ACCESS
0010	55+25	-	55+63	LT	15	15	0.1	0.3	0.3	0.2	1	---	---	---	15	CURB RAMP & TEMP PED ACCESS
0010	57+93	-	58+28	LT	18	18	0.1	0.4	0.3	0.3	1	---	---	---	18	CURB RAMP & TEMP PED ACCESS
0010	58+00	-	58+26	RT	4	4	0.1	0.1	0.1	0.1	1	---	---	---	4	DWY
0010	58+56	-	58+94	LT	21	21	0.1	0.4	0.3	0.3	1	---	---	---	21	CURB RAMP & TEMP PED ACCESS
0010	61+13	-	61+59	LT	18	18	0.1	0.4	0.3	0.3	1	---	---	---	18	CURB RAMP & TEMP PED ACCESS
0010	61+86	-	62+27	LT	22	22	0.1	0.4	0.3	0.3	1	---	---	---	22	CURB RAMP & TEMP PED ACCESS
0010	67+70	-	68+08	LT	15	15	0.1	0.3	0.2	0.2	1	---	---	---	15	DWY
0010	71+10	-	71+36	RT	22	22	0.1	0.4	0.4	0.3	1	---	---	---	22	CURB RAMP
0010	71+17	-	71+69	LT	28	28	0.1	0.5	0.4	0.4	1	---	---	---	28	CURB RAMP & DWY
0010	74+01	-	74+39	LT	7	7	0.1	0.2	0.2	0.1	1	---	---	---	7	DWY
0010	80+11	-	82+09	LT	73	73	0.1	1.4	1.0	1.0	2	---	---	---	73	CURB RAMP & TEMP PED ACCESS
0010	80+11	-	82+10	RT	87	87	0.1	1.6	1.2	1.2	2	---	---	---	87	CURB RAMP & TEMP PED ACCESS
0010	82+41	-	84+65	LT	221	221	0.2	6.0	3.0	3.0	5	---	---	---	221	CURB RAMP & TEMP PED ACCESS
0010	82+43	-	84+65	RT	178	178	0.2	4.8	2.4	2.4	4	---	---	---	178	CURB RAMP & TEMP PED ACCESS
0010	102+69	-	104+64	LT	105	105	0.1	1.9	1.9	1.5	3	---	---	---	105	CURB & GUTTER
0010	108+27	-	109+33	LT	47	47	0.1	0.9	0.9	0.7	2	---	---	---	47	CURB RAMP
0010	108+39	-	109+22	RT	45	45	0.1	0.8	0.8	0.6	1	---	---	---	45	CURB RAMP & DWY
0010	11+68	-	11+82	RT	73	73	0.1	1.4	1.4	1.4	2	---	---	---	73	CURB & GUTTER
0010	UNDISTRIBUTED				383	383	1.3	2.7	5.5	5.6	16	---	---	---	383	
TOTAL 0010					1,915	1,915	6.4	13.5	27.5	28.1	80	298	1,915			

CONTINUED FROM PREVIOUS COLUMN

SAWING ITEMS

CATEGORY	STATION TO	STATION	LOCATION	REMARKS	690.0150 SAWING ASPHALT LF	690.0250 SAWING CONCRETE LF
0010	11+09'A	11+40'A	RT	SIDEWALK AND CURB & GUTTER	65	
0010	17+41	17+82	RT	ASP, PATH, & C&G	44	
0010	17+86	18+13	LT	C&G AND SIDEWALK	28	
0010	18+82	19+05	LT	DWY & SIDEWALK	26	
0010	19+41	19+62	LT	DWY & SIDEWALK	25	
0010	20+00'Z	20+100'Z	LT	CURB & GUTTER	102	
0010	20+48	20+75	LT	C&G AND SIDEWALK	29	
0010	20+49	20+88	RT	C&G AND PATH	5	
0010	21+07	21+36	LT	C&G & SIDEWALK	24	
0010	24+13	24+39	LT	C&G & SIDEWALK	16	
0010	24+67	25+13	LT	C&G & SIDEWALK	24	
0010	27+65	27+87	LT	C&G & SIDEWALK	16	
0010	28+13	28+43	LT	C&G & SIDEWALK	22	
0010	30+89	31+20	LT	C&G & SIDEWALK	16	
0010	31+45	31+74	LT	C&G & SIDEWALK	16	
0010	34+31	34+57	LT	C&G & SIDEWALK	14	
0010	34+89	35+18	LT	C&G & SIDEWALK	14	
0010	37+74	37+98	LT	C&G & SIDEWALK	10	
0010	37+86	38+19	RT	C&G	4	
0010	38+32	38+65	LT	C&G & SIDEWALK	15	
0010	38+51	38+63	RT	C&G & SIDEWALK	4	
0010	41+11	41+38	LT	C&G & SIDEWALK	10	
0010	41+38	41+46	RT	C&G	4	
0010	41+74	41+97	LT	C&G & SIDEWALK	9	
0010	44+52	44+81	LT	C&G & SIDEWALK	9	
0010	45+12	45+40	LT	C&G & SIDEWALK	10	
0010	46+47	46+71	RT	C&G & DWY	4	
0010	48+08	48+32	LT	C&G & SIDEWALK	9	
0010	8+59'K	8+79'K	LT	C&G & SIDEWALK	14	
0010	9+09'K	9+70'K	LT	C&G & SIDEWALK	8	
0010	51+51	51+74	LT	C&G & SIDEWALK	6	
0010	51+94	52+16	LT	C&G & SIDEWALK	36	
0010	54+77	55+00	LT	C&G & SIDEWALK	7	
0010	55+22	55+43	LT	C&G & SIDEWALK	20	
0010	58+02	58+23	RT	C&G & DWY	4	
0010	58+09	58+30	LT	C&G & SIDEWALK	37	
0010	58+53	58+74	LT	C&G & SIDEWALK	42	
0010	61+41	61+61	LT	C&G & SIDEWALK	13	
0010	61+83	62+05	LT	C&G & SIDEWALK	25	
0010	67+70	68+08	LT	C&G & DWY	54	
0010	71+11	71+36	RT	C&G & PATH	39	
0010	71+17	71+68	LT	C&G & SIDEWALK	66	
0010	74+01	74+39	LT	C&G & DWY	57	
0010	80+11	82+09	RT	C&G & SIDEWALK	199	
0010	80+16	82+09	LT	C&G & SIDEWALK	2	
0010	91+76	93+33	LT	DWY	160	
0010	102+69	105+24	LT	C&G & ROAD ASPH	157	
0010	103+04	104+35	LT, MEDIAN	CURB & GUTTER	126	
0010	106+54	108+02	LT, MEDIAN	CURB & GUTTER	148	
0010	108+27	109+33	LT	SIDEWALK, DWY, AND C&G	223	
0010	108+56	108+97	RT	DWY	41	
0010	108+97	109+22	RT	PATH	20	
0010	109+13	109+21	LT	MEDIAN NOSE	29	
0010	110+65	111+09	LT, MEDIAN	C&G & ASPH	56	
0010	110+63	111+81	LT	C&G & ASPH	122	

CONTINUED IN NEXT COLUMN

CONTINUED FROM PREVIOUS COLUMN

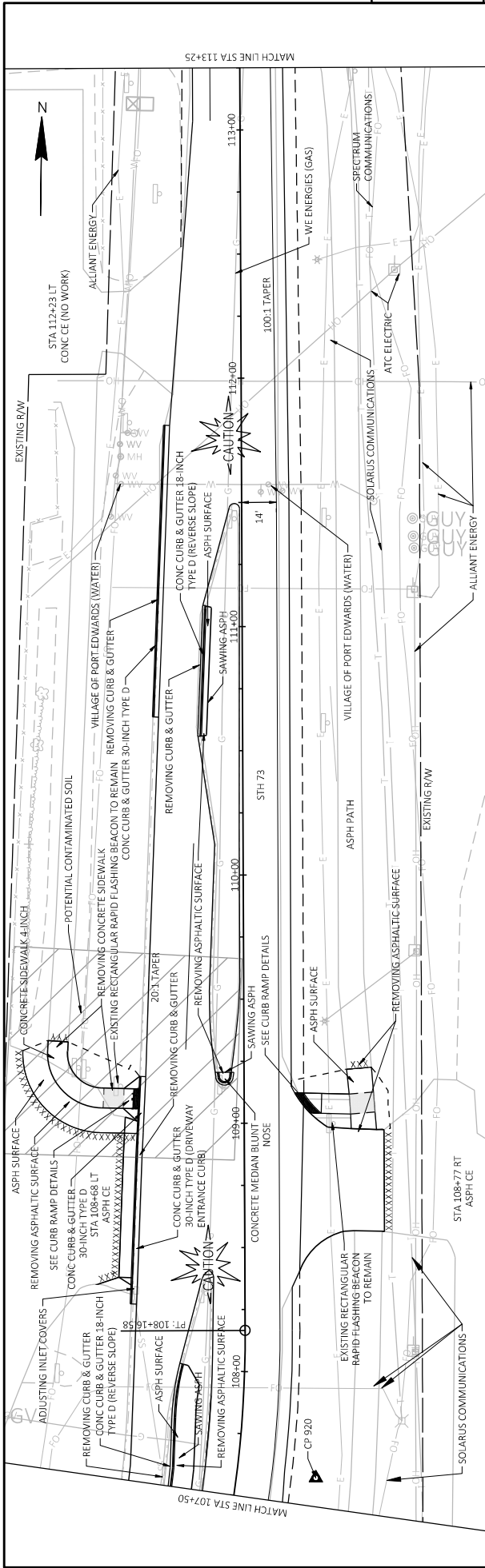
SAWING ITEMS

CATEGORY	STATION TO	STATION	LOCATION	REMARKS	690.0150 SAWING ASPHALT LF	690.0250 SAWING CONCRETE LF
0010	11+09'A	11+40'A	RT	ASP PATH	29	
0010	11+85	11+41	RT	ASP PATH	43	
0010	115+01	115+38	RT	DWY	35	
0010	116+02	116+37	RT	DWY	25	
0010	118+72	118+97	RT	DWY	24	
0010	120+06	120+30	RT	DWY	23	
0010	121+25	121+49	RT	DWY	24	
0010	122+26	122+50	RT	DWY	25	
0010	123+51	123+77	RT	TEMP WIDENING	150	
0010	101+47	102+95	RT	TEMP WIDENING	175	
0010	106+70	108+44	RT	TEMP WIDENING	475	
0010	109+10	113+85	RT	TEMP WIDENING	713	
TOTAL 0010					3,809	

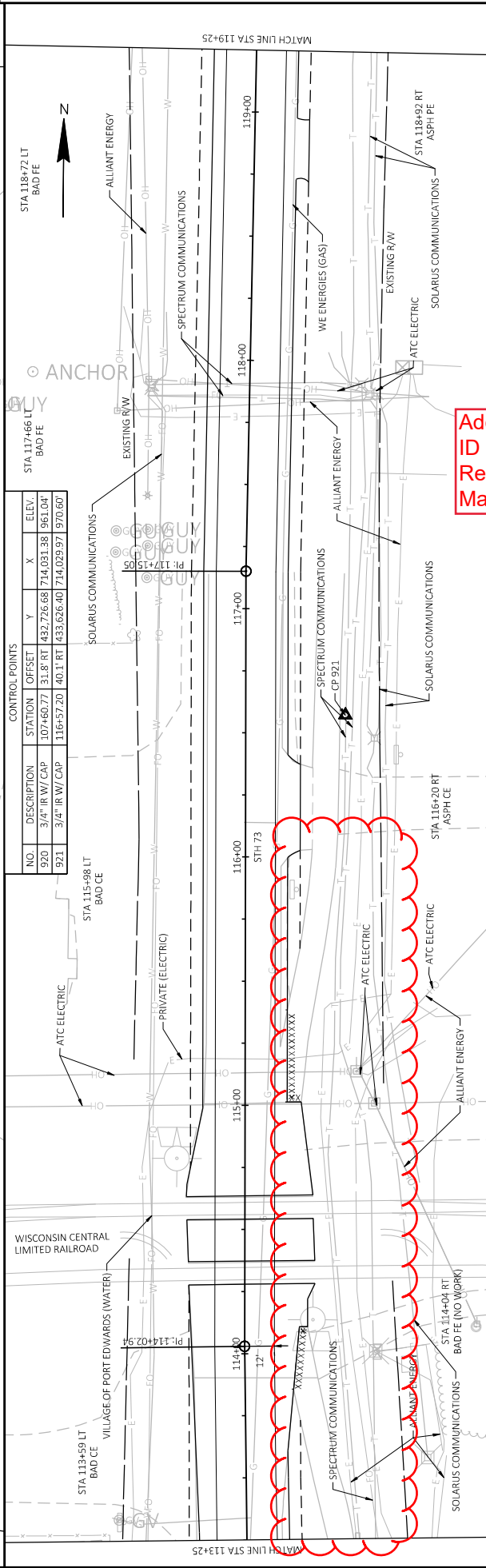
GRADING CURB RAMPS

CATEGORY	STATION TO	STATION	LOCATION	REMARKS	SPV.0060.01 SPECIAL (O.I. GRADING AND SHAPING FOR CURB RAMPS) EACH
0010	11+09'A	11+40'A	RT		1
0010	17+46	17+83	RT		1
0010	18+13	18+13	LT		1
0010	20+48	20+71	STH 73/31ST ST		1
0010	20+54	20+60	RT		1
0010	21+43	21+36	STH 73/31ST ST		1
0010	24+13	24+35	STH 73/2ND ST		1
0010	24+72	25+13	STH 73/2ND ST		1
0010	27+63	27+83	STH 73/3RD ST		1
0010	28+17	28+43	STH 73/3RD ST		1
0010	30+89	31+16	STH 73/4TH ST		1
0010	31+49	31+74	STH 73/4TH ST		1
0010	34+31	34+52	STH 73/5TH ST		1
0010	34+93	35+18	STH 73/5TH ST		1
0010	37+24	37+94	STH 73/6TH ST		1
0010	38+36	38+65	STH 73/6TH ST		1
0010	38+54	38+60	STH 73 RT		1
0010	41+10	41+33	STH 73/7TH ST		1
0010	41+78	41+97	STH 73/7TH ST		1
0010	44+52	44+76	STH 73/8TH ST		1
0010	45+16	45+40	STH 73/8TH ST		1
0010	48+08	48+27	STH 73/9TH ST		1
0010	8+57'K	8+75'K	9TH ST LT		1
0010	9+13'K	9+63'K	9TH ST LT		1
0010	51+51	51+70	STH 73/10TH ST		1
0010	51+98	52+16	STH 73/10TH ST		1
0010	54+77	54+95	STH 73/11TH ST		1
0010	55+26	55+43	STH 73/11TH ST		1
0010	58+09	58+26	STH 73/12TH ST		1
0010	58+57	58+74	STH 73/12TH ST		1
0010	61+41	61+57	STH 73/13TH ST		1
0010	61+87	62+05	STH 73/13TH ST		1
0010	71+21	71+26	LT		1
0010	71+22	71+27	RT		1
0010	109+01	109+33	LT		1
0010	109+04	109+12	RT		1
TOTAL 0010					36

Addendum No. 01  
ID 6320-00-75  
Revised Sheet 157  
March 20, 2024



5



5

CONTROL POINTS

NO.	DESCRIPTION	STATION	OFFSET	Y	X	ELEV.
920	3/4" IR/W/ CAP	107+60.77	31.8' RT	432.726.68	714.031.38	961.004
921	3/4" IR/W/ CAP	116+57.20	40.1' RT	433.626.40	714.029.97	970.60

Addendum No. 01  
ID 6320-00-75  
Revised Sheet 181  
March 20, 2024

PROJECT NO: 6320-00-75

COUNTY: WOOD

PLAN

FLY BY: CONNOR GRTEN

FLY DATE: 2/19/2024 9:49 AM

FLY SCALE: 1" IN=40' FT

SHEET 181

E

FILE NAME: G:\00\0009\00093715\CADD\SHETS\PLAN\052021.PWDWG  
LAYOUT NAME: 09  
MATCH LINE STA 107+50  
MATCH LINE STA 113+25  
MATCH LINE STA 113+25  
MATCH LINE STA 119+25  
MATCH LINE STA 119+25  
HWY: STH 73  
PROJECT NO: 6320-00-75  
COUNTY: WOOD  
PLAN  
FLY BY: CONNOR GRTEN  
FLY DATE: 2/19/2024 9:49 AM  
FLY SCALE: 1" IN=40' FT  
SHEET 181  
E

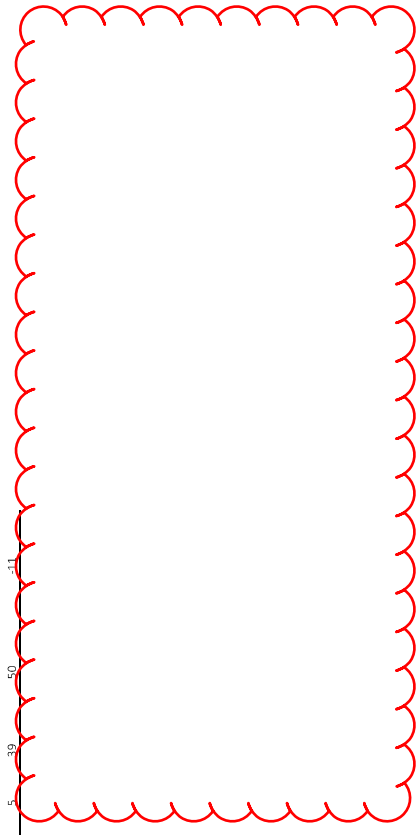
Addendum No. 01  
 ID 6320-00-75  
 Revised Sheet 287  
 March 20, 2024

DIVISION 1 - GUARDRAIL

STATION	DISTANCE	AREA (SF)		INCREMENTAL VOL (CY) (UNADJUSTED)			CUMULATIVE VOL (CY)		
		CUT	SALVAGED/UNUSABLE FILL	CUT	SALVAGED/UNUSABLE FILL	EXPANDED FILL	CUT	EXPANDED FILL	MASS ORDINATE
		NOTE 1	NOTE 2	NOTE 1	NOTE 2	NOTE 3	NOTE 1	NOTE 1	NOTE 8
80+11.42	0.00	3.26	0.00	0	0	0	0	0	0
80+25.00	13.58	5.05	0.00	0	0	0	2	0	2
80+75.00	50.00	4.12	0.00	0	0	0	10	0	10
81+18.65	43.65	6.32	0.00	0	0	0	18	0	18
81+21.03	2.38	6.34	0.00	0	0	0	19	0	19
81+43.93	22.90	6.18	0.00	0	0	0	24	0	24
81+45.67	1.74	6.18	0.00	0	0	0	24	0	24
81+69.22	23.55	6.19	0.00	0	0	0	29	0	29
81+70.33	1.11	6.20	0.00	0	0	0	29	0	29
81+87.50	17.17	5.50	0.00	0	0	0	33	0	33
82+62.50	75.00	2.40	0.00	0	0	0	33	0	33
82+81.01	18.51	0.00	0.00	0	0	0	34	0	30
83+06.00	24.99	0.63	0.00	0	0	0	34	0	25
83+31.00	25.00	0.36	0.00	0	0	0	34	0	19
83+77.73	46.73	0.60	0.00	0	0	0	35	0	3
84+12.50	34.77	0.50	0.00	0	0	0	36	0	-8
84+65.15	52.65	2.55	0.00	0	0	0	39	0	-11

DIVISION 1 - RECONSTRUCTION SECTION

STATION	DISTANCE	AREA (SF)		INCREMENTAL VOL (CY) (UNADJUSTED)			CUMULATIVE VOL (CY)		
		CUT	SALVAGED/UNUSABLE FILL	CUT	SALVAGED/UNUSABLE FILL	EXPANDED FILL	CUT	EXPANDED FILL	MASS ORDINATE
		NOTE 1	NOTE 2	NOTE 1	NOTE 2	NOTE 3	NOTE 1	NOTE 1	NOTE 8
102+68.63	0.00	27.65	4.67	0	0	0	0	0	0
103+50.00	81.37	27.65	4.67	2.00	0	0	14	0	8
104+50.00	100.00	27.65	4.67	2.00	102	17	7	185	16
105+24.22	74.22	27.65	4.67	2.00	76	13	5	261	23





Proposal Schedule of Items

Proposal ID: 20240409015 Project(s): 6320-00-75

Federal ID(s): N/A

SECTION: 0001 Contract Items

Alt Set ID: Alt Mbr ID:

Proposal Line Number	Item ID Description	Approximate Quantity and Units	Unit Price	Bid Amount
0002	201.0210 Grubbing	25.000 SY	_____.	_____.
0004	204.0100 Removing Concrete Pavement	12.000 SY	_____.	_____.
0006	204.0110 Removing Asphaltic Surface	1,191.000 SY	_____.	_____.
0008	204.0115 Removing Asphaltic Surface Butt Joints	1,159.000 SY	_____.	_____.
0010	204.0120 Removing Asphaltic Surface Milling	47,766.000 SY	_____.	_____.
0012	204.0150 Removing Curb & Gutter	2,155.000 LF	_____.	_____.
0014	204.0155 Removing Concrete Sidewalk	509.000 SY	_____.	_____.
0016	204.0165 Removing Guardrail	172.000 LF	_____.	_____.
0018	204.0195 Removing Concrete Bases	1.000 EACH	_____.	_____.
0020	204.0215 Removing Catch Basins	1.000 EACH	_____.	_____.
0022	204.0220 Removing Inlets	2.000 EACH	_____.	_____.
0024	204.0245 Removing Storm Sewer (size) 01. 12-Inch	4.000 LF	_____.	_____.
0026	204.0245 Removing Storm Sewer (size) 02. 18-Inch	18.000 LF	_____.	_____.
0028	204.0270 Abandoning Culvert Pipes	1.000 EACH	_____.	_____.
0030	205.0100 Excavation Common	300.000 CY	_____.	_____.
0032	208.0100 Borrow	11.000 CY	_____.	_____.



Proposal Schedule of Items

Proposal ID: 20240409015 Project(s): 6320-00-75

Federal ID(s): N/A

SECTION: 0001 Contract Items

Alt Set ID: Alt Mbr ID:

Proposal Line Number	Item ID Description	Approximate Quantity and Units	Unit Price	Bid Amount
0034	211.0101 Prepare Foundation for Asphaltic Paving (project) 01. 6320-00-75	1.000 EACH	_____.	_____.
0036	211.0400 Prepare Foundation for Asphaltic Shoulders	63.000 STA	_____.	_____.
0038	213.0100 Finishing Roadway (project) 01. 6320-00-75	1.000 EACH	_____.	_____.
0040	305.0110 Base Aggregate Dense 3/4-Inch	230.000 TON	_____.	_____.
0042	305.0120 Base Aggregate Dense 1 1/4-Inch	1,236.000 TON	_____.	_____.
0044	416.0610 Drilled Tie Bars	51.000 EACH	_____.	_____.
0046	450.4000 HMA Cold Weather Paving	1,262.000 TON	_____.	_____.
0048	455.0605 Tack Coat	5,720.000 GAL	_____.	_____.
0050	460.2000 Incentive Density HMA Pavement	6,480.000 DOL	1.00000	6,480.00
0052	460.6224 HMA Pavement 4 MT 58-28 S	5,151.000 TON	_____.	_____.
0054	460.6424 HMA Pavement 4 MT 58-28 H	4,973.000 TON	_____.	_____.
0056	465.0105 Asphaltic Surface	169.000 TON	_____.	_____.
0058	465.0110 Asphaltic Surface Patching	224.000 TON	_____.	_____.
0060	465.0120 Asphaltic Surface Driveways and Field Entrances	70.000 TON	_____.	_____.
0062	465.0125 Asphaltic Surface Temporary	176.000 TON	_____.	_____.



Proposal Schedule of Items

Proposal ID: 20240409015 Project(s): 6320-00-75

Federal ID(s): N/A

SECTION: 0001 Contract Items

Alt Set ID: Alt Mbr ID:

Proposal Line Number	Item ID Description	Approximate Quantity and Units	Unit Price	Bid Amount
0064	465.0315 Asphaltic Flumes	5.000 SY	_____.	_____.
0066	520.1012 Apron Endwalls for Culvert Pipe 12-Inch	2.000 EACH	_____.	_____.
0068	601.0407 Concrete Curb & Gutter 18-Inch Type D	314.000 LF	_____.	_____.
0070	601.0409 Concrete Curb & Gutter 30-Inch Type A	61.000 LF	_____.	_____.
0072	601.0411 Concrete Curb & Gutter 30-Inch Type D	685.000 LF	_____.	_____.
0074	601.0588 Concrete Curb & Gutter 4-Inch Sloped 36-Inch Type TBT	144.000 LF	_____.	_____.
0076	601.0600 Concrete Curb Pedestrian	30.000 LF	_____.	_____.
0078	602.0405 Concrete Sidewalk 4-Inch	5,472.000 SF	_____.	_____.
0080	602.0505 Curb Ramp Detectable Warning Field Yellow	454.000 SF	_____.	_____.
0082	602.0605 Curb Ramp Detectable Warning Field Radial Yellow	64.000 SF	_____.	_____.
0084	602.0810 Concrete Driveway 6-Inch	14.000 SY	_____.	_____.
0086	608.0312 Storm Sewer Pipe Reinforced Concrete Class III 12-Inch	4.000 LF	_____.	_____.
0088	608.3012 Storm Sewer Pipe Class III-A 12-Inch	34.000 LF	_____.	_____.
0090	611.0624 Inlet Covers Type H	1.000 EACH	_____.	_____.
0092	611.0654 Inlet Covers Type V	2.000 EACH	_____.	_____.





Proposal Schedule of Items

Proposal ID: 20240409015 Project(s): 6320-00-75

Federal ID(s): N/A

SECTION: 0001 Contract Items

Alt Set ID: Alt Mbr ID:

Proposal Line Number	Item ID Description	Approximate Quantity and Units	Unit Price	Bid Amount
0094	611.3004 Inlets 4-FT Diameter	1.000 EACH	_____.	_____.
0096	611.3220 Inlets 2x2-FT	2.000 EACH	_____.	_____.
0098	611.8110 Adjusting Manhole Covers	4.000 EACH	_____.	_____.
0100	611.8115 Adjusting Inlet Covers	6.000 EACH	_____.	_____.
0102	611.8120.S Cover Plates Temporary	3.000 EACH	_____.	_____.
0104	614.2500 MGS Thrie Beam Transition	157.600 LF	_____.	_____.
0106	614.2610 MGS Guardrail Terminal EAT	4.000 EACH	_____.	_____.
0108	618.0100 Maintenance and Repair of Haul Roads (project) 01. 6320-00-75	1.000 EACH	_____.	_____.
0110	619.1000 Mobilization	1.000 EACH	_____.	_____.
0112	620.0200 Concrete Median Blunt Nose	32.000 SF	_____.	_____.
0114	624.0100 Water	25.000 MGAL	_____.	_____.
0116	625.0500 Salvaged Topsoil	1,915.000 SY	_____.	_____.
0118	628.1504 Silt Fence	270.000 LF	_____.	_____.
0120	628.1520 Silt Fence Maintenance	270.000 LF	_____.	_____.
0122	628.1905 Mobilizations Erosion Control	9.000 EACH	_____.	_____.
0124	628.1910 Mobilizations Emergency Erosion Control	4.000 EACH	_____.	_____.



Proposal Schedule of Items

Proposal ID: 20240409015 Project(s): 6320-00-75

Federal ID(s): N/A

SECTION: 0001 Contract Items

Alt Set ID: Alt Mbr ID:

Proposal Line Number	Item ID Description	Approximate Quantity and Units	Unit Price	Bid Amount
0126	628.2008 Erosion Mat Urban Class I Type B	1,915.000 SY	_____.	_____.
0128	628.7015 Inlet Protection Type C	49.000 EACH	_____.	_____.
0130	629.0210 Fertilizer Type B	6.400 CWT	_____.	_____.
0132	630.0120 Seeding Mixture No. 20	13.500 LB	_____.	_____.
0134	630.0140 Seeding Mixture No. 40	27.500 LB	_____.	_____.
0136	630.0200 Seeding Temporary	28.100 LB	_____.	_____.
0138	630.0500 Seed Water	80.000 MGAL	_____.	_____.
0140	633.5200 Markers Culvert End	2.000 EACH	_____.	_____.
0142	634.0614 Posts Wood 4x6-Inch X 14-FT	13.000 EACH	_____.	_____.
0144	634.0616 Posts Wood 4x6-Inch X 16-FT	1.000 EACH	_____.	_____.
0146	634.0620 Posts Wood 4x6-Inch X 20-FT	1.000 EACH	_____.	_____.
0148	638.2102 Moving Signs Type II	22.000 EACH	_____.	_____.
0150	638.3000 Removing Small Sign Supports	15.000 EACH	_____.	_____.
0152	642.5001 Field Office Type B	1.000 EACH	_____.	_____.
0154	643.0300 Traffic Control Drums	47,224.000 DAY	_____.	_____.
0156	643.0420 Traffic Control Barricades Type III	3,459.000 DAY	_____.	_____.



Proposal Schedule of Items

Proposal ID: 20240409015 Project(s): 6320-00-75

Federal ID(s): N/A

SECTION: 0001 Contract Items

Alt Set ID: Alt Mbr ID:

Proposal Line Number	Item ID Description	Approximate Quantity and Units	Unit Price	Bid Amount
0158	643.0500 Traffic Control Flexible Tubular Marker Posts	51.000 EACH	_____.	_____.
0160	643.0600 Traffic Control Flexible Tubular Marker Bases	51.000 EACH	_____.	_____.
0162	643.0705 Traffic Control Warning Lights Type A	4,732.000 DAY	_____.	_____.
0164	643.0715 Traffic Control Warning Lights Type C	1,994.000 DAY	_____.	_____.
0166	643.0900 Traffic Control Signs	11,900.000 DAY	_____.	_____.
0168	643.1070 Traffic Control Cones 42-Inch	476.000 DAY	_____.	_____.
0170	643.3165 Temporary Marking Line Paint 6-Inch	31,548.000 LF	_____.	_____.
0172	643.3180 Temporary Marking Line Removable Tape 6-Inch	14,713.000 LF	_____.	_____.
0174	643.3350 Temporary Marking Crosswalk Removable Tape 6-inch	748.000 LF	_____.	_____.
0176	643.5000 Traffic Control	1.000 EACH	_____.	_____.
0178	644.1410 Temporary Pedestrian Surface Asphalt	1,187.000 SF	_____.	_____.
0180	644.1430 Temporary Pedestrian Surface Plate	500.000 SF	_____.	_____.
0182	644.1440 Temporary Pedestrian Surface Matting	1,187.000 SF	_____.	_____.
0184	644.1601 Temporary Pedestrian Curb Ramp	735.000 DAY	_____.	_____.
0186	644.1605 Temporary Pedestrian Detectable Warning Field	185.000 SF	_____.	_____.



Proposal Schedule of Items

Proposal ID: 20240409015 Project(s): 6320-00-75

Federal ID(s): N/A

SECTION: 0001 Contract Items

Alt Set ID: Alt Mbr ID:

Proposal Line Number	Item ID Description	Approximate Quantity and Units	Unit Price	Bid Amount
0188	644.1810 Temporary Pedestrian Barricade	2,398.000 LF	_____.	_____.
0190	646.2020 Marking Line Epoxy 6-Inch	23,687.000 LF	_____.	_____.
0192	646.4020 Marking Line Epoxy 10-Inch	466.000 LF	_____.	_____.
0194	646.4720 Marking Line Same Day Epoxy 6-Inch	6,157.000 LF	_____.	_____.
0196	646.4820 Marking Line Same Day Epoxy 10-Inch	338.000 LF	_____.	_____.
0198	646.5020 Marking Arrow Epoxy	13.000 EACH	_____.	_____.
0200	646.5320 Marking Railroad Crossing Epoxy	2.000 EACH	_____.	_____.
0202	646.6120 Marking Stop Line Epoxy 18-Inch	102.000 LF	_____.	_____.
0204	646.6466 Cold Weather Marking Epoxy 6-Inch	28,220.000 LF	_____.	_____.
0206	646.6470 Cold Weather Marking Epoxy 10-Inch	491.000 LF	_____.	_____.
0208	646.7120 Marking Diagonal Epoxy 12-Inch	205.000 LF	_____.	_____.
0210	646.7420 Marking Crosswalk Epoxy Transverse Line 6-Inch	1,678.000 LF	_____.	_____.
0212	646.7520 Marking Crosswalk Epoxy Block Style 24-Inch	60.000 LF	_____.	_____.
0214	646.8120 Marking Curb Epoxy	30.000 LF	_____.	_____.
0216	646.9000 Marking Removal Line 4-Inch	3,379.000 LF	_____.	_____.



Proposal Schedule of Items

Proposal ID: 20240409015 Project(s): 6320-00-75

Federal ID(s): N/A

SECTION: 0001 Contract Items

Alt Set ID: Alt Mbr ID:

Proposal Line Number	Item ID Description	Approximate Quantity and Units	Unit Price	Bid Amount
0218	646.9012 Marking Removal Line Water Blasting 6-Inch	278.000 LF	_____.	_____.
0220	646.9100 Marking Removal Line 8-Inch	165.000 LF	_____.	_____.
0222	646.9200 Marking Removal Line Wide	205.000 LF	_____.	_____.
0224	646.9210 Marking Removal Line Water Blasting Wide	26.000 LF	_____.	_____.
0226	650.4000 Construction Staking Storm Sewer	3.000 EACH	_____.	_____.
0228	650.4500 Construction Staking Subgrade	255.000 LF	_____.	_____.
0230	650.5000 Construction Staking Base	255.000 LF	_____.	_____.
0232	650.5500 Construction Staking Curb Gutter and Curb & Gutter	2,055.000 LF	_____.	_____.
0234	650.8000 Construction Staking Resurfacing Reference	10,618.000 LF	_____.	_____.
0236	650.9000 Construction Staking Curb Ramps	42.000 EACH	_____.	_____.
0238	650.9500 Construction Staking Sidewalk (project) 01. 6320-00-75	1.000 EACH	_____.	_____.
0240	650.9911 Construction Staking Supplemental Control (project) 01. 6320-00-75	1.000 EACH	_____.	_____.
0242	650.9920 Construction Staking Slope Stakes	422.000 LF	_____.	_____.
0244	652.0225 Conduit Rigid Nonmetallic Schedule 40 2-Inch	3.000 LF	_____.	_____.



Proposal Schedule of Items

Proposal ID: 20240409015 Project(s): 6320-00-75

Federal ID(s): N/A

SECTION: 0001 Contract Items

Alt Set ID: Alt Mbr ID:

Proposal Line Number	Item ID Description	Approximate Quantity and Units	Unit Price	Bid Amount
0246	655.0210 Cable Traffic Signal 3-14 AWG	24.000 LF	_____.	_____.
0248	655.0270 Cable Traffic Signal 15-14 AWG	218.000 LF	_____.	_____.
0250	658.0416 Pedestrian Signal Face 16-Inch	1.000 EACH	_____.	_____.
0252	658.0500 Pedestrian Push Buttons	1.000 EACH	_____.	_____.
0254	690.0150 Sawing Asphalt	3,809.000 LF	_____.	_____.
0256	690.0250 Sawing Concrete	713.000 LF	_____.	_____.
0258	740.0440 Incentive IRI Ride	10,416.000 DOL	1.00000	10,416.00
0260	SPV.0060 Special 01. Grading and Shaping for Curb Ramps	36.000 EACH	_____.	_____.
0262	SPV.0060 Special 02. Adjusting Water Valves	2.000 EACH	_____.	_____.
0264	SPV.0060 Special 03. Adjusting Sanitary Manhole Covers	8.000 EACH	_____.	_____.
0266	SPV.0060 Special 04. Connect to Existing Storm Sewer Pipe	1.000 EACH	_____.	_____.
0268	SPV.0060 Special 05. Remove, Salvage, and Reinstall Traffic Signal Equipment	1.000 EACH	_____.	_____.
0270	SPV.0060 Special 06. Research and Locate Existing Land Parcel Monuments	11.000 EACH	_____.	_____.
0272	SPV.0060 Special 07. Verify and Replace Existing Land Parcel Monuments	11.000 EACH	_____.	_____.



Proposal Schedule of Items

Proposal ID: 20240409015 Project(s): 6320-00-75

Federal ID(s): N/A

SECTION: 0001 Contract Items

Alt Set ID: Alt Mbr ID:

Proposal Line Number	Item ID Description	Approximate Quantity and Units	Unit Price	Bid Amount
0274	SPV.0060 Special 08. Modified Concrete Bases Type 1	1.000 EACH	_____.	_____.
0276	SPV.0090 Special 01. Concrete Curb & Gutter 21-Inch Type D	6.000 LF	_____.	_____.
0278	SPV.0090 Special 02. Concrete Curb & Gutter 24-Inch Type D	876.000 LF	_____.	_____.
0280	SPV.0090 Special 03. Concrete Curb & Gutter 24-Inch Type A Special	107.000 LF	_____.	_____.
0282	SPV.0165 Special 01. Remove, Salvage, and Reinstall Rock Landscaping	298.000 SF	_____.	_____.
0284	SPV.0170 Special 01. Concrete Joint and Crack Cleaning and Repair	32.000 STA	_____.	_____.
0286	SPV.0180 Special 01. Removing Distressed Asphaltic Surface Milling	1,000.000 SY	_____.	_____.
0288	SPV.0180 Special 02. Preparing Topsoil for Lawn Type Turf	1,915.000 SY	_____.	_____.
0290	SPV.0195 Special 01. Excavation, Hauling, and Disposal of Contaminated Soil	20.000 TON	_____.	_____.
<b>Section: 0001</b>			<b>Total:</b>	_____.
			<b>Total Bid:</b>	_____.

