



# Wisconsin Department of Transportation

## Division of Transportation Systems Development

Bureau of Project Development  
4822 Madison Yards Way, 4<sup>th</sup> Floor South  
Madison, WI 53705

May 7, 2024

Telephone: (608) 266-1631  
Facsimile (FAX): (608) 266-8459

### NOTICE TO ALL CONTRACTORS:

**Proposal #02: 1071-07-79, WISC2024351**  
**La Crosse – Sparta**  
**(Safety Rest Area 16 Sparta Building)**  
**IH 90**  
**Monroe County**

### Letting of May 14, 2024

This is Addendum No. 01, which provides for the following:

#### Special Provisions:

Revised Special Provisions	
Article No.	Description
28	Site Furnishings
39	General Requirements for Building Construction
42	Rest Area Building HVAC, Item SPV.0060.13; Maintenance Building HVAC, Item SPV.0060.17
43	Rest Area Building Electrical, Item SPV.0060.14; Maintenance Building Electrical, Item SPV.0060.18

#### Schedule of Items:

Added Bid Item Quantities					
Bid Item	Item Description	Unit	Proposal Total Prior to Addendum	Quantity Added	Proposal Total After Addendum
632.0101.01	Celtis Occidentalis 'Chicagoland' Chicagoland Hackberry, 2.5" Cal, B&B	EACH	0	9	9
632.0101.02	Gleditsia Triacanthos Inermis 'Skycole' Skyline Honey Locust, 2.5" Cal, B&B	EACH	0	6	6
632.0101.03	Quercus Alba White Oak, 2.5" Cal, B&B	EACH	0	6	6
632.0101.04	Quercus Bicolor Swamp White Oak, 2.5" Cal, B&B	EACH	0	4	4
632.0201.01	Aronia Melanocarpa Var. Elataglossy Black Chokeberry, 12" Height, Cont.	EACH	0	12	12
632.0201.02	Ceanothus Americanus New Jersey Tea, 12" Height, Cont. (Revise Name)	EACH	0	18	18

632.0201.03	Dasiphora Fruticosa Bush Cinquefoil, 12" Height, Cont.	EACH	0	3	3
632.0201.04	Diervilla Lonicera Dwarf Bush Honeysuckle, 12" Height, Cont.	EACH	0	9	9
632.0201.05	Ribes Americanum American Black Currant, 12" Height, Cont.	EACH	0	14	14
632.0201.06	Symphoricarpos Albus Common Snowberry, 12" Height, Cont.	EACH	0	24	24
632.0201.07	Anaphalis Margaritacea Pearly Everlasting, DP 50, Plug	EACH	0	28	28
632.0201.08	Asclepias Tuberosa Butterfly Milkweed, DP 50, Plug	EACH	0	74	74
632.0201.09	Asclepias Verticillata Whorled Milkweed, DP 50, Plug	EACH	0	72	72
632.0201.10	Bouteloua Curtipendula Side Oats Grama, DP 50, Plug	EACH	0	48	48
632.0201.11	Bouteloua Gracilis Blue Grama Grass, DP 50, Plug	EACH	0	31	31
632.0201.12	Dalea Purpurea Purple Prairie Clover, DP 50, Plug	EACH	0	48	48
632.0201.13	Echinacea Angustifolia Narrow Leaf Coneflower, DP 50, Plug	EACH	0	50	50
632.0201.14	Fragaria Vesca Woodland Strawberry, DP 50, Plug	EACH	0	86	86
632.0201.15	Heuchera Richardsonii Prairie Alum Root, DP 50, Plug	EACH	0	92	92
632.0201.16	Monarda Fistulosa Bergamot, DP 50, Plug	EACH	0	41	41
632.0201.17	Schizachyrium Scoparium Little Bluestem, DP 50, Plug	EACH	0	31	31
632.0201.18	Sporobolus Heterolepis Prairie Dropseed, DP 50, Plug	EACH	0	39	39
632.0201.19	Symphotrichum Sericeum Silky Aster, DP 50, Plug	EACH	0	38	38

Deleted Bid Item Quantities					
Bid Item	Item Description	Unit	Proposal Total Prior to Addendum	Proposal Quantity Change (-)	Proposal Total After Addendum
632.0101.01	Overstory Tree, 2.5" Cal, B&B	EACH	25	-25	0
632.0201.01	Shrub, 12" Height, B&B	EACH	80	-80	0
632.0201.03	Perennial, DP50, CG	EACH	678	-678	0
656.0201.01	Electrical Service Meter Breaker Pedestal (CB 100)	EACH	1	-1	0

**Plan Sheets:**

Revised Plan Sheets	
Plan Sheet	Plan Sheet Title (brief description of changes to sheet)
43	Revised Building Architectural Plan (G1-11) – Detail sheet added to sheet index
47	Revised Building Architectural Plan (G1-21) – Added door actuator button to code data plan and floor plan

71	Revised Building Architectural Plan (A1-31B) – Clean up tags
82-84	Revised Building Architectural Plan (A2-11 – A2-13) – Revised exterior finish schedule, revised exterior elevation tags, revised exterior elevation names
87-91	Revised Building Architectural Plan (A3-21 – A3-31) – Revised approx. grade, revised detail components, revised visible levels, added insulation, revised wall & base details
94	Revised Building Architectural Plan (A3-34) – Revised detail annotation
99	Revised Building Architectural Plan (A4-11) – Revised door schedule
102-103	Revised Building Architectural Plan (A4-21 – A4-22) – Revised detail annotation at window sills
107-109	Revised Building Architectural Plan (A5-11 – A5-13) – Revised spelling
195	Revised Building Architectural Plan (E2-00) – Update keynote #46. Add (2) well pump and (1) sewage ejector pump locations on plan.
201	Revised Building Architectural Plan (E4-11) – Update electrical riser to have contractor refer to SPV 0060.19 for electrical service requirements.
205	Revised Building Architectural Plan (E5-11) – Add (2) 40A 3-pole breakers to MDP for well pumps (by others)
208-209	Revised Building Architectural Plan (E5-14 – E5-15) – Add (1) 20A 2-pole breaker to P2 for sewage ejector pump (by others) and add well pumps (WP-1 and WP-2) and sewage ejector pump (SEP-1) to schedule.
300	Miscellaneous Quantities – Remove planting table and moved to sheet 300A
305	Miscellaneous Quantities – Removed item 656.0201.01 from Lighting Control table

<b>Added Plan Sheets</b>	
Plan Sheet	Plan Sheet Title (brief description of why sheet was added)
97A	Building Architectural Plan (A3-38) (additional details)
300A	Miscellaneous Quantities – Revised planting table

The responsibility for notifying potential subcontractors and suppliers of these changes remains with the prime contractor.

Sincerely,

*Mike Coleman*

Proposal Development Specialist  
Proposal Management Section

**ADDENDUM NO. 01**

**1071-07-79**

**May 7, 2024**

**Special Provisions**

**28. Site Furnishings.**

Replace section 2.1 (c) under subsection titled **Part 2 Products** under section titled **Section 32 33 00 – Site Furnishings** with the following:

- C. Cedar Forest Products; <https://cedarforestproducts.com/>
  - 1. Sales Contact: Ryan Candler, ABCreative, Phone: (515) 333-9800, Email: [Ryan@ABCCreative.net](mailto:Ryan@ABCCreative.net)

Replace section 2.2 (B) (C) and (D) under subsection titled **Part 2 Products** under section titled **Section 32 33 00 – Site Furnishings** with the following:

- B. Picnic Table.
  - 1. Manufacturer: Kay Park.
  - 2. Model: Single Post Picnic Table, Model No. 4SPTCVPN or Approved Equal.
    - a. 46" Square Top.
- C. ADA Picnic Table.
  - 1. Manufacturer: Kay Park.
  - 2. Model: Single Post Picnic Table, Model No. 4SPTCVPN-3S or Approved Equal.
    - a. 46" Square Top.
- D. Bench.
  - 1. Manufacturer: Kay Park.
  - 2. Model: 6' Stationary Bench with Back, Model No. 62SCVPN or Approved Equal.

**39. General Requirements for Building Construction.**

Replace section 1.1 (A) under subsection titled **Part 1 General** under section titled **Section 00 31 00 – Available Project Information** with the following:

- A. A copy of the geotechnical evaluation report with respect to the building site is available at the following location:  
<https://wisdot.box.com/s/dq18rd54chqojxffi1a635pps4cd70rg> or can be accessed on the HCCI May bid letting page under Supplemental Information.

**42. Rest Area Building HVAC, Item SPV.0060.13; Maintenance Building HVAC, Item SPV.0060.17.**

Replace section 2.5 (A) (C) and (D) under subsection titled **Part 2 Products** under section titled **Section 23 21 23 – Hydronic Pumps** with the following:

- A. Type: Horizontal shaft, single stage, radially or horizontally split casing, for 125 psi maximum working pressure.

Delete section titled **2.6 Base-Mounted Pumps** subsection titled **Part 2 Products** under section titled **Section 23 21 23 – Hydronic Pumps**.

Add the following to section titled **2.1 Manufacturers** under subsection titled **Part 2 Products** under section titled **Section 23 81 28 – Water to Air Heat Pumps**:

- U. Climatemaster: www.climatemaster.com.

Add the following to section titled **2.1 Manufacturers** under subsection titled **Part 2 Products** under section titled **Section 23 81 28 – Ground-Source Unitary Heat Pumps**:

- 5. Climatemaster: www.climatemaster.com.

#### **42. Rest Area Building Electrical, Item SPV.0060.14; Maintenance Building Electrical, Item SPV.0060.18**

Replace section 1.3 (E) under subsection titled **Part 1 General** under section titled **Section 26 00 10 – Basic Electrical Requirements** with the following:

- E. The Electrical Contractor is responsible for contacting the utility company and coordinating the power connection for the building service. The costs of the utility connection will be paid separately by the Department.

Add Section 28 00 00 – Video Surveillance:

#### **Section 28 20 00 - Video Surveillance**

##### **PART 1 GENERAL**

##### **1.1 SECTION INCLUDES**

- A. Video surveillance system requirements.
- B. Video recording and viewing equipment.
- C. Cameras.
- D. Accessories.

##### **1.2 RELATED REQUIREMENTS**

- A. Section 07 84 00 - Firestopping.
- B. Section 26 05 26 - Grounding and Bonding for Electrical Systems.
- C. Section 26 05 29 - Hangers and Supports for Electrical Systems.
- D. Section 26 05 33.13 - Conduit for Electrical Systems.
- E. Section 26 05 53 - Identification for Electrical Systems: Identification products and requirements.
- F. Section 27 10 00 - Structured Cabling: Data cables for IP video surveillance system network connections.
- G. Section 28 10 00 - Access Control: For interface with video surveillance system.

##### **1.3 REFERENCE STANDARDS**

- A. 47 CFR 15 - Radio Frequency Devices; current edition.
- B. IEEE 802.3 - IEEE Standard for Ethernet; 2022, with Amendments (2023).
- C. IEEE C2 - National Electrical Safety Code(R) (NESC(R)); 2023.
- D. NECA 1 - Standard for Good Workmanship in Electrical Construction; 2015.
- E. NECA 303 - Standard for Installing and Maintaining Closed-Circuit Television (CCTV) Systems; 2019.
- F. NFPA 70 - National Electrical Code; Most Recent Edition Adopted by Authority Having Jurisdiction, Including All Applicable Amendments and Supplements.

#### 1.4 ADMINISTRATIVE REQUIREMENTS

- A. Coordination:
  - 1. Coordinate the placement of cameras with structural members, ductwork, piping, equipment, luminaires, diffusers, fire suppression system components, and other potential conflicts installed under other sections or by others.
  - 2. Coordinate the work with other installers to provide power for equipment at required locations.
  - 3. Notify Architect of any conflicts with or deviations from Contract Documents. Obtain direction before proceeding with work.
- B. Preinstallation Meetings:
  - 1. Conduct meeting with facility representative to review camera and equipment locations and camera field of view objectives.
  - 2. Conduct meeting with facility representative and other related equipment manufacturers to discuss video surveillance system interface requirements.

#### 1.5 SUBMITTALS

- A. See Section 01 30 00 - Administrative Requirements, for submittal procedures.
- B. Shop Drawings: Include plan views indicating locations of system components and proposed size, type, and routing of conduits and/or cables. Include elevations and details of proposed equipment arrangements. Include system interconnection schematic diagrams. Include requirements for interface with other systems.
- C. Product Data: Provide manufacturer's standard catalog pages and data sheets for each system component. Include ratings, configurations, standard wiring diagrams, dimensions, finishes, service condition requirements, and installed features.
- D. Design Data:
  - 1. Standby battery/UPS calculations.
  - 2. Video storage capacity calculations.
- E. Certify that proposed system design and components meet or exceed specified requirements.
- F. Evidence of qualifications for installer.
- G. Evidence of qualifications for maintenance contractor (if different entity from installer).
- H. Manufacturer's Installation Instructions: Indicate application conditions and limitations of use stipulated by product testing agency. Include instructions for storage, handling, protection, examination, preparation, installation, and operation of product.
- I. Manufacturer's detailed field testing procedures.
- J. Field quality control test reports.
- K. Project Record Documents: Record actual locations of system components and installed wiring arrangements and routing.
- L. Operation and Maintenance Data: Include detailed information on system operation, equipment programming and setup, replacement parts, and recommended maintenance procedures and intervals.

- 1. Include contact information for entity that will be providing contract maintenance and trouble call-back service.
  - M. Warranty: Submit sample of manufacturer's warranty and documentation of final executed warranty completed in Owner's name and registered with manufacturer.
  - N. Maintenance contracts.
  - O. Software: One copy of software not resident in read-only memory.
- 1.6 QUALITY ASSURANCE
- A. Comply with the following:
    - 1. NFPA 70.
    - 2. Applicable TIA/EIA standards.
  - B. Maintain at the project site a copy of each referenced document that prescribes execution requirements.
  - C. Manufacturer Qualifications: Company specializing in manufacturing the products specified in this section with minimum three years documented experience.
  - D. Installer Qualifications: Company specializing in performing the work of this section with minimum three years documented experience with video surveillance systems of similar size, type, and complexity and providing contract maintenance service as a regular part of their business; authorized manufacturer's representative.
    - 1. Contract maintenance office located within 100 miles of project site.
  - E. Maintenance Contractor Qualifications: Same entity as installer.
- 1.7 DELIVERY, STORAGE, AND HANDLING
- A. Receive, inspect, handle, and store products in accordance with manufacturer's instructions and NECA 303.
  - B. Store products in manufacturer's unopened packaging, keep dry and protect from damage until ready for installation.
  - C. Maintain environmental conditions (temperature, humidity, and ventilation) within limits recommended by manufacturer's recommended limits.
- 1.8 FIELD CONDITIONS
- A. Maintain field conditions within manufacturer's required service conditions during and after installation.
- 1.9 WARRANTY
- A. See Section 01 78 00 - Closeout Submittals, for additional warranty requirements.
  - B. Provide minimum five year manufacturer warranty covering repair or replacement due to defective materials or workmanship.

## **PART 2 PRODUCTS**

### 2.1 MANUFACTURERS

- A. Video Recording and Viewing Equipment:
  - 1. Axis Communications: [www.axis.com](http://www.axis.com)
  - 2. Substitutions: See Section 01 60 00 - Product Requirements.
- B. Cameras:
  - 1. Axis Communications: [www.axis.com](http://www.axis.com)
  - 2. Substitutions: See Section 01 60 00 - Product Requirements.
- C. Source Limitations: Where possible, furnish system components and accessories produced by single manufacturer and obtained from single supplier.

### 2.2 VIDEO SURVEILLANCE SYSTEM

- A. Provide new video surveillance system consisting of all required equipment, conduit, boxes, wiring, connectors, hardware, supports, accessories, software, system programming, etc. as necessary for a complete operating system that provides the functional intent indicated.

- B. System Description: IP system with connection to network (IP) cameras.
  - 1. Video Storage Capacity: Suitable for storing video from all cameras for 30 days.
  - 2. System Battery Backup: Provide batteries/uninterruptible power supplies (UPS) as required for 20 minutes full operation.
- C. Cameras Required: Axis
  - 1. See article "CAMERAS" below for product descriptions.
  - 2. Camera 1
  - 3. Camera 2
    - a. Camera Type: Interior Fixed Dome
    - b. Camera Type: Exterior Fixed Dome
    - c. Lens Type: Furnished with camera.
    - d. Interior Mounting: Surface, CeilingTile, Or Gypsum Mounted
    - e. Mounting: Corner Mounted Bracket
    - f. Mounting: Wall Mount
    - g. Mounting: Pendant Kit
- D. Video Recording and Viewing Equipment Required:
  - 1. See article "VIDEO RECORDING AND VIEWING EQUIPMENT" below for product descriptions.
  - 2. Equipment located in ELECT/IT 115
    - a. NVR server.
    - b. NVR storage unit(s).
    - c. Equipment rack.
    - d. Uninterruptible power supply (UPS).
- E. Interface with Other Systems:
  - 1. Provide products compatible with other systems requiring interface with video surveillance system.
  - 2. Interface with future access control system
- F. Provide products listed, classified, and labeled as suitable for the purpose intended.
- G. Electromagnetic Interference/Radio Frequency Interference (EMI/RFI) Limits: Comply with FCC requirements of 47 CFR 15, for Class B, consumer application.

### 2.3 VIDEO RECORDING AND VIEWING EQUIPMENT

- A. Provide video recording and viewing equipment compatible with cameras to be connected.
- B. Network Video Recorders (NVRs):
  - 1. Supports connection of network (IP) cameras.
  - 2. Supports continuous and event-based recording.
  - 3. Network Video Recorder Type AXIS S3016:
    - a. Capacity: 16 channels.
    - b. Recording and Viewing Performance: 30 fps at 1080 resolution.
    - c. Storage Capacity: 30 TB.
    - d. Removable Media: DVD-RW, USB.
    - e. Network: Single 1 Gigabit Ethernet.
    - f. Features:
      - (1) Supports remote access via axis camera station
      - (2) Desktop
      - (3) Mobile



- C. Computers:
  - 1. Workstation Computers: Unless otherwise indicated, workstation computer to be furnished by owner. Video surveillance system to be provided by Contractor as part of work of this section, meeting video surveillance system equipment manufacturer's minimum requirements.
  - 2. Servers: Unless otherwise indicated, server hardware not furnished by video surveillance system manufacturer to be provided by Contractor as part of work of this section, video surveillance system equipment meeting manufacturer's minimum requirements.
- D. Software:
  - 1. Unless otherwise indicated, provide all software and licenses required for fully operational system.
  - 2. Video Management System:
    - a. Axis Camera Station

## 2.4 CAMERAS

- A. Provide cameras and associated accessories suitable for operation under the service conditions at the installed location. Provide additional components (e.g. enclosures, Seal Tight, Fittings, heaters, blowers, etc.) as required.
- B. Where not factory-installed, provide additional components (e.g. lenses, mounting accessories, etc.) as necessary for complete installation.
- C. Network (IP) Cameras:
  - 1. Signal-to-Noise Ratio: Not less than 50 dB.
  - 2. Provide the following standard features:
    - a. Automatic electronic shutter.
    - b. Automatic gain control.
    - c. Automatic white balance.
    - d. Web-based interface for remote viewing and setup.
    - e. Password protected security access.
  - 3. Network (IP) Fixed Dome Panoramic Camera - P-3727-PLE 4X2 MP MULTIDIRECTIONAL CAMERA WITH IR FOR 360 COVERAGE; [www.axis.com/#sle](http://www.axis.com/#sle).
    - a. Maximum Video Resolution: 1920X1080.
    - b. Maximum Frame Rate: 25/30 FPS AT 50/60HZ
    - c. Image Sensor Size: 4X1/2.8
    - d. Minimum Illumination/Light Sensitivity (Color): 17 lux.
    - e. Lens: F1.8-2.6 VARIFOCAL
    - f. Features: Zipstream, forensic capture wide dynamic range, local storage, Power over Ethernet (PoE), day and night functionality, built-in IR illumination.
  - 4. Network (IP) Fixed Dome 180 Degree - Basis of Design: Axis Communications M3066-V [www.axis.com/#sle](http://www.axis.com/#sle).
    - a. Maximum Video Resolution: 2304 x 1728.
    - b. Maximum Frame Rate: 25/30 fps at 50/60 Hz.
    - c. Image Sensor Size: 1 x 1.25 inch.
    - d. Minimum Illumination/Light Sensitivity (Color): 0.23 lux.
    - e. Lens: 2.4 MM F2.1 Horizontal Field Of View 131Degrees.
    - f. Features: Forensic capture wide dynamic range, Zipstream, Power over Ethernet (PoE), day and night functionalit

## 2.5 ACCESSORIES

- A. Camera Enclosures: Where not factory-installed, provide camera enclosures suitable for operation under service conditions at installed location.
- B. Camera Mounting Supports: Where not factory installed, provide mounting supports necessary for installation.
  - 1. Products: AXIS T91A64 CORNER BRACKET
  - 2. AXIS T91D61 WALL MOUNT
  - 3. AXIS T94N01D PENDENT KIT
    - a. Substitutions: See Section 01 60 00 - Product Requirements.
- C. Provide components as indicated or as required for connection of video surveillance system to devices and other systems indicated.
- D. Provide components as indicated or as required for system power and network connections.
- E. Provide cables as indicated or as required for connections between system components.
  - 1. Data Cables for IP Network Connections: Unshielded twisted pair (UTP), minimum Category 5e, complying with Section 27 10 00.
- F. Provide accessory racks/cabinets as indicated or as required for equipment mounting.

## **PART 3 EXECUTION**

### 3.1 EXAMINATION

- A. Verify that field measurements are as indicated.
- B. Verify that ratings and configurations of system components are consistent with the indicated requirements.
- C. Verify that mounting surfaces are ready to receive system components.
- D. Verify that branch circuit wiring installation is completed, tested, and ready for connection to system where applicable.
- E. Verify that conditions are satisfactory for installation prior to starting work.

### 3.2 INSTALLATION

- A. Install video surveillance system in accordance with NECA 1 (general workmanship) and NECA 303.
- B. Install products in accordance with manufacturer's instructions.
- C. Provide required support and attachment in accordance with Section 26 05 29.
- D. Wiring Method: Unless otherwise indicated, use cables (not in conduit).
  - 1. Use suitable listed cables in wet locations, including underground raceways.
  - 2. Use suitable listed cables for vertical riser applications.
  - 3. Use listed plenum rated cables in spaces used for environmental air.
  - 4. Install wiring in conduit for the following:
    - a. Where required for rough-in.
    - b. Where required by authorities having jurisdiction.
    - c. Where exposed to damage.
    - d. Where installed outside the building.
    - e. For exposed connections from outlet boxes to cameras.
  - 5. Conduit: Comply with Section 26 05 33.13.
  - 6. Conceal all cables unless specifically indicated to be exposed.
  - 7. Cables in the following areas may be exposed, unless otherwise indicated:
    - a. Equipment closets.
    - b. Within joists in areas with no ceiling.
  - 8. Route exposed cables parallel or perpendicular to building structural members and

surfaces.

9. Include service loop cable lengths to allow relocation of cameras within 30 ft of installed location.

E. Provide grounding and bonding in accordance with Section 26 05 26.

F. Install firestopping to preserve fire resistance rating of partitions and other elements, using materials and methods specified in Section 07 84 00.

G. Identify system wiring and components in accordance with Section 26 05 53.

### 3.3 FIELD QUALITY CONTROL

A. See Section 01 40 00 - Quality Requirements, for additional requirements.

B. Provide services of a manufacturer's authorized representative to observe installation and assist in inspection and testing. Include manufacturer's detailed testing procedures and field reports with submittals.

C. Prepare and start system in accordance with manufacturer's instructions.

D. Adjust cameras to provide desired field of view and produce suitable images under all service lighting conditions.

E. Program system parameters according to requirements of Owner.

F. Test for proper interface with other systems.

G. Correct defective work, adjust for proper operation, and retest until entire system complies with Contract Documents.

H. Submit detailed reports indicating inspection and testing results and corrective actions taken.

### 3.4 COMPONENT RIGGING

A. At all time shall the contractor engage in safe rigging practices to mount, fasten, and attach specific electronic components and associated hardware.

B. All hardware should be hardend steel forged designed for and implemented utilizing manufactures recomended specific work load limits. Fasteners shall be grad 5 or better in all cases except where detailed.

### 3.5 CLEANING

A. Contractor is responsible for keeping the job site clean and remove all trash at the end of each day. The contractor must cooperate with building officials to keep disruption to the jobsite to a minimum, and shall be responsible for all damages caused by installation.

### 3.6 LABELING

A. All cables, patch panels, biscuits shall be permanently labeled in a neat fashion specific to location. Acceptable methods include:

1. Brother P-touch {Laminate Type}

2. Dymo Laminate Type

3. Lamacoid Engraved Labels

### 3.7 OWNER INSTRUCTION

A. Schedule at least 14 days in advance of owner's intended first use of the system, a training session with the owner and operating personnel. Operating training should include the following.

1. Overview of operation including power up and power down procedures.

2. Demonstration on software {Recording and playback}

3. Question and answer session.

B. Training shall be documented and completion shall be reported to the architect.

C. The owner may request as many as two additional training sessions at no additional expense to the owner.

### 3.8 CLOSEOUT ACTIVITIES

A. See Section 01 78 00 - Closeout Submittals, for closeout submittals.

- B. See Section 01 79 00 - Demonstration and Training, for additional requirements.
- C. Demonstration: Demonstrate proper operation of system to Owner, and correct deficiencies or make adjustments as directed.
- D. Verification that all cameras have the most recent firmware version installed.
- E. Training: Train Owner's personnel on operation, adjustment, and maintenance of system.
  - 1. Use operation and maintenance manual as training reference, supplemented with additional training materials as required.
  - 2. Provide minimum of four hours of training.
  - 3. Instructor: Manufacturer's authorized representative.
  - 4. Location: At project site.
- F. Owner shall have total turn-key system complete and functional, consistent with the manufacturer's specifications.

### 3.9 PROTECTION

- A. Protect installed system components from subsequent construction operations.

### 3.10 MAINTENANCE

- A. See Section 01 70 00 - Execution and Closeout Requirements, for additional requirements relating to maintenance service.
- B. Provide to Owner, a proposal as an alternate to the base bid, a separate maintenance contract for the service and maintenance of video surveillance system for five years from date of Substantial Completion; Include a complete description of preventive maintenance, systematic examination, adjustment, cleaning, inspection, and testing, with a detailed schedule.
- C. Provide trouble call-back service upon notification by Owner:
  - 1. Include allowance for call-back service during normal working hours at no extra cost to Owner.
  - 2. Owner will pay for call-back service outside of normal working hours on an hourly basis, based on actual time spent at site and not including travel time; include hourly rate and definition of normal working hours in maintenance contract.

### END OF SECTION

#### **Schedule of Items**

Attached, dated May 7, 2024, are the revised Schedule of Items Pages 1 – 12.

#### **Plan Sheets**

The following 8½ x 11-inch sheets are attached and made part of the plans for this proposal:

Revised: 43, 47, 71, 82-84, 87-91, 94, 99, 102-103, 107-109, 195, 201, 205, 208-209, 300 and 305.

Added: 97A and 300A.

END OF ADDENDUM



Addendum No. 01  
 ID 1071-07-79  
 Revised Sheet 47  
 May 7, 2024



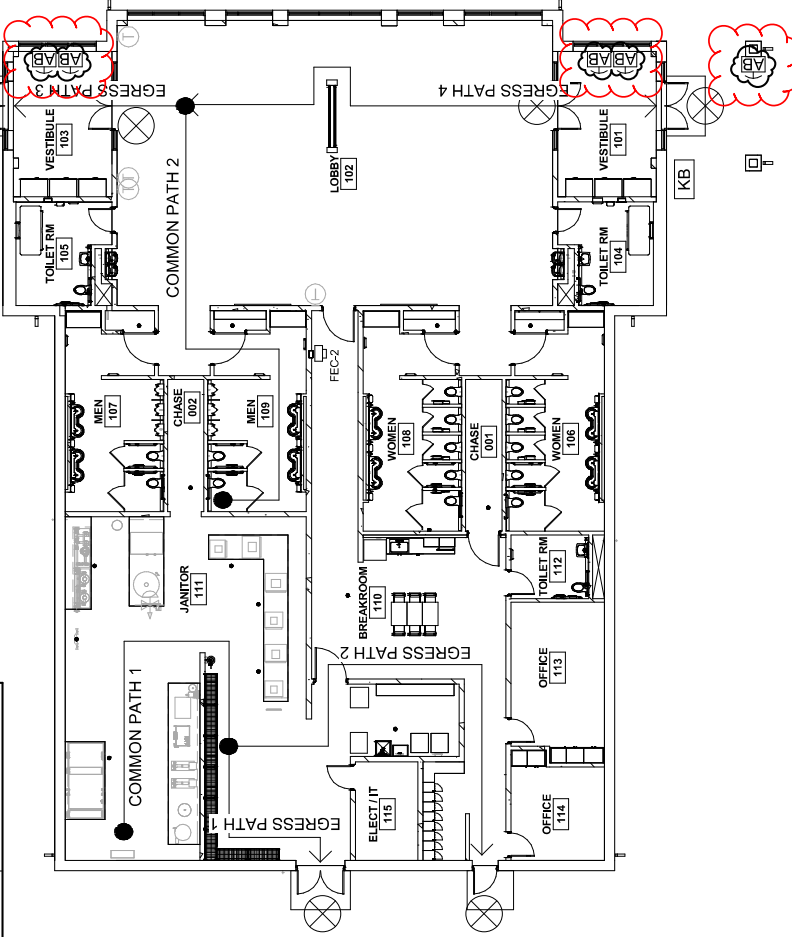
EGRESS PATH SCHEDULE			
MARK	TRAVEL DISTANCE	CLEAR WIDTH	COMMENTS
COMMON PATH 1	51'-6"	3'-0"	
COMMON PATH 2	66'-10"	3'-0"	
EGRESS PATH 1	26'-8"	3'-0"	
EGRESS PATH 2	67'-6"	3'-0"	
EGRESS PATH 3	22'-0"	3'-0"	
EGRESS PATH 4	70'-2"	3'-0"	

**CODE DATA PLAN KEY**

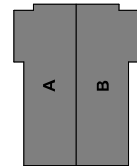
EXIT  
 FIRE EXTINGUISHER  
 FIRE EXTINGUISHER CABINET  
 DOOR ACTUATOR BUTTON  
 KNOX BOX  
 KB

**FIRE WALLS, FIRE BARRIERS, FIRE PARTITIONS, SMOKE BARRIERS AND SMOKE PARTITIONS OR ANY OTHER WALL REQUIRED TO HAVE PROTECTED OPENINGS OR PENETRATIONS SHALL BE EFFECTIVELY AND PERMANENTLY IDENTIFIED WITH SIGNS OR STENCILING. SUCH IDENTIFICATION SHALL BE LOCATED IN ACCESSIBLE CONCEALED FLOOR, FLOOR-CEILING JUNCTIONS, OR ATTIC SPACES.**

1. BE LOCATED IN ACCESSIBLE CONCEALED FLOOR, FLOOR-CEILING JUNCTIONS, OR ATTIC SPACES.
2. BE LOCATED WITHIN 15 FEET OF THE END OF EACH WALL AND AT INTERVALS NOT EXCEEDING 30 FEET MEASURED HORIZONTALLY.
3. THE LETTERING SHALL BE AT LEAST 3/8" IN HEIGHT WITH A MINIMUM 3/8" STROKE IN A CONTRASTING COLOR INCORPORATING THE SUGGESTED WORDING "FIRE AND/OR SMOKE BARRIER. PROTECT ALL OPENINGS" OR OTHER SIMILAR WORDING.

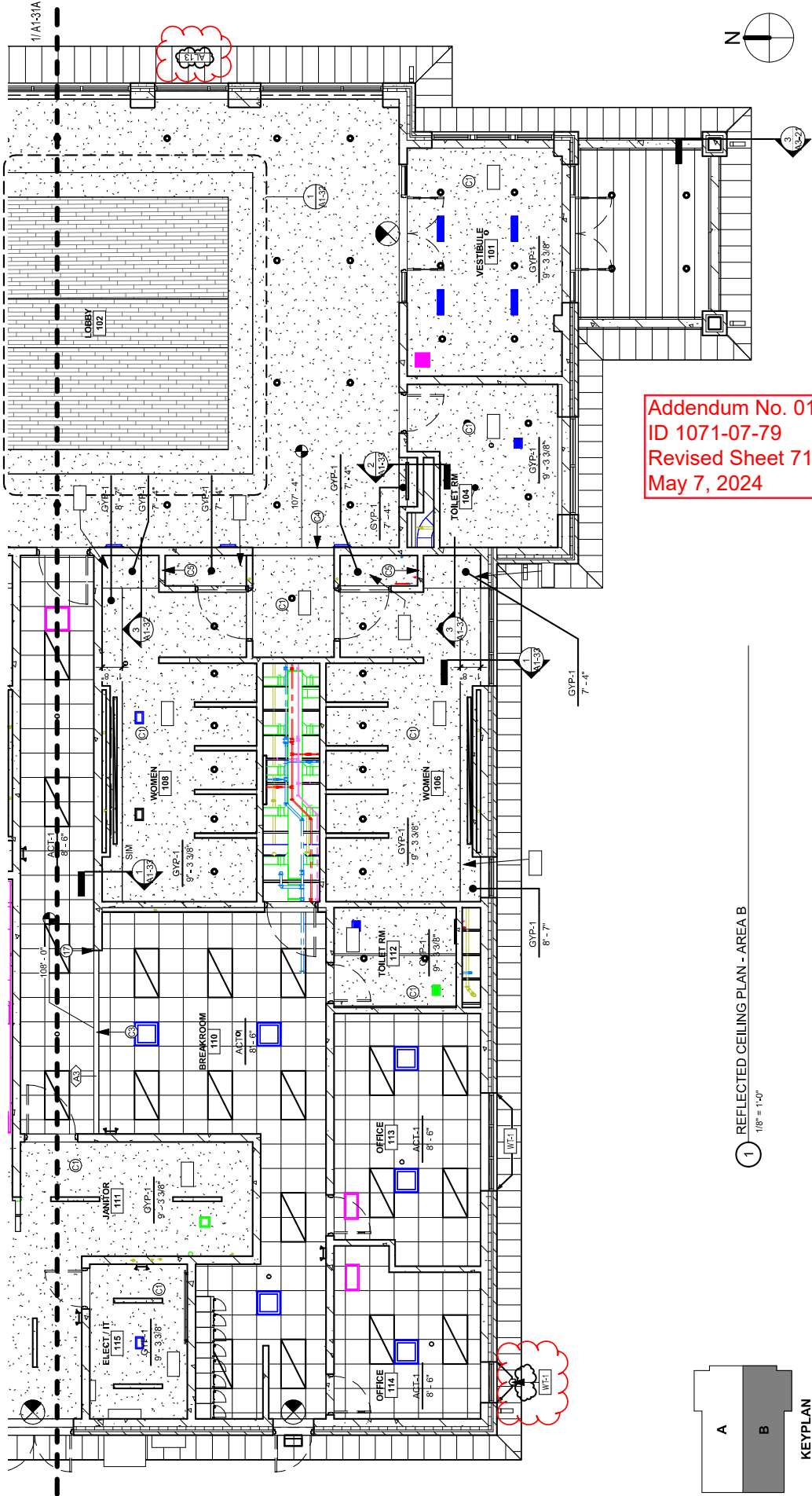


2 CODE DATA PLAN - MAIN LEVEL  
 1/16" = 1'-0"

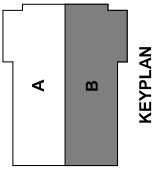


KEYPLAN

REFER TO SHEET A1-31 - REFLECTED CEILING PLAN FOR SHEET NOTES AND KEYNOTE LEGEND.



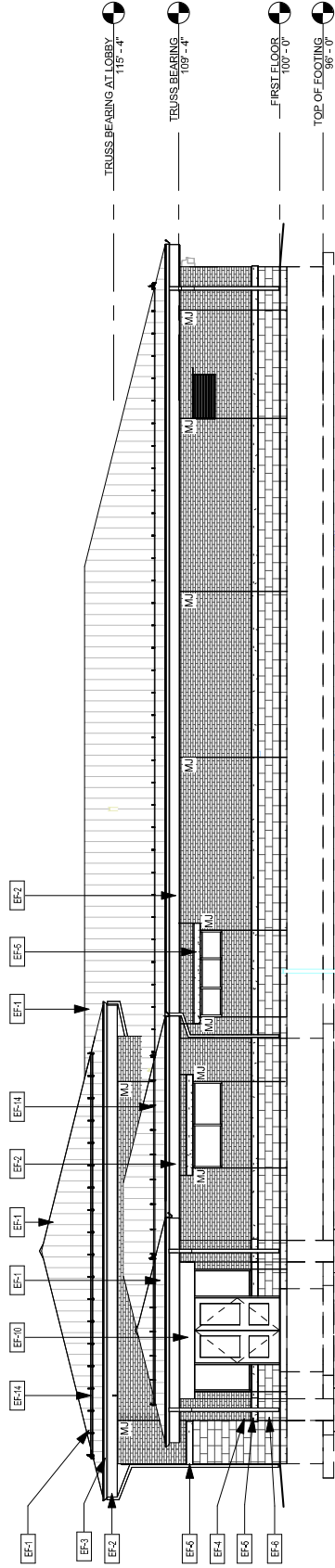
Addendum No. 01  
 ID 1071-07-79  
 Revised Sheet 71  
 May 7, 2024



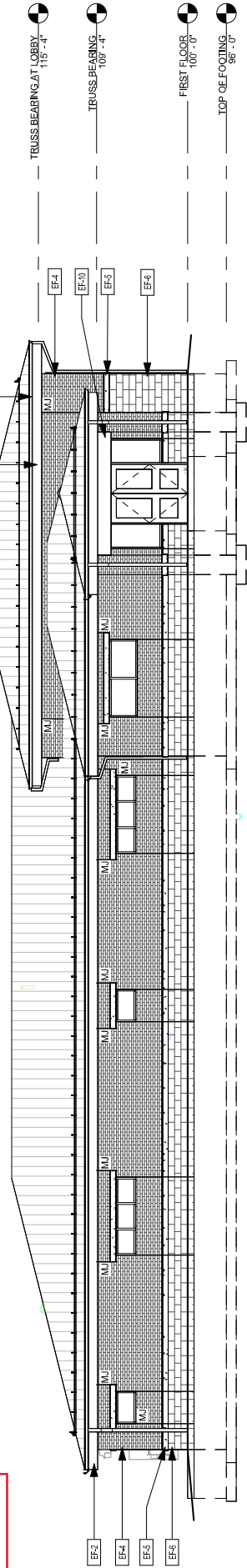
1 REFLECTED CEILING PLAN - AREA B  
 1/8" = 1'-0"

EXTERIOR FINISH SCHEDULE

MARK	MATERIAL TYPE	MANUFACTURER	MODEL / SIZE	COLOR	ADDITIONAL INFORMATION	COMMENTS
EF-1	STANDING SEAM ROOFING	UNACIAD	PENCIL RIBBED / UC 6	EXTRA DARK BRONZE		
EF-2	PRE-FIN W/ FASCIA TRIM	UNACIAD		EXTRA DARK BRONZE		
EF-3	ROOF GUTTER	UNACIAD		DARK BRONZE		
EF-4	BACK	UNACIAD		MONTE CARLO SHADOW VELOUR		
EF-5	CLADDING	UNACIAD		CREME		
EF-6	CLADDING	UNACIAD		DARK BRONZE		
EF-7	CLADDING	UNACIAD		EXTRA DARK BRONZE		
EF-8	CLADDING	UNACIAD		EXTRA DARK BRONZE		
EF-9	CLADDING	UNACIAD		EXTRA DARK BRONZE		
EF-10	CLADDING	UNACIAD		EXTRA DARK BRONZE		
EF-11	CLADDING	UNACIAD		EXTRA DARK BRONZE		
EF-12	CLADDING	UNACIAD		EXTRA DARK BRONZE		
EF-13	CLADDING	UNACIAD		EXTRA DARK BRONZE		
EF-14	CLADDING	UNACIAD		EXTRA DARK BRONZE		
EF-15	CLADDING	UNACIAD		EXTRA DARK BRONZE		



1 NORTH ELEVATION  
3/32" = 1'-0"



2 SOUTH ELEVATION  
3/32" = 1'-0"

Addendum No. 01  
ID 1071-07-79  
Revised Sheet 82  
May 7, 2024



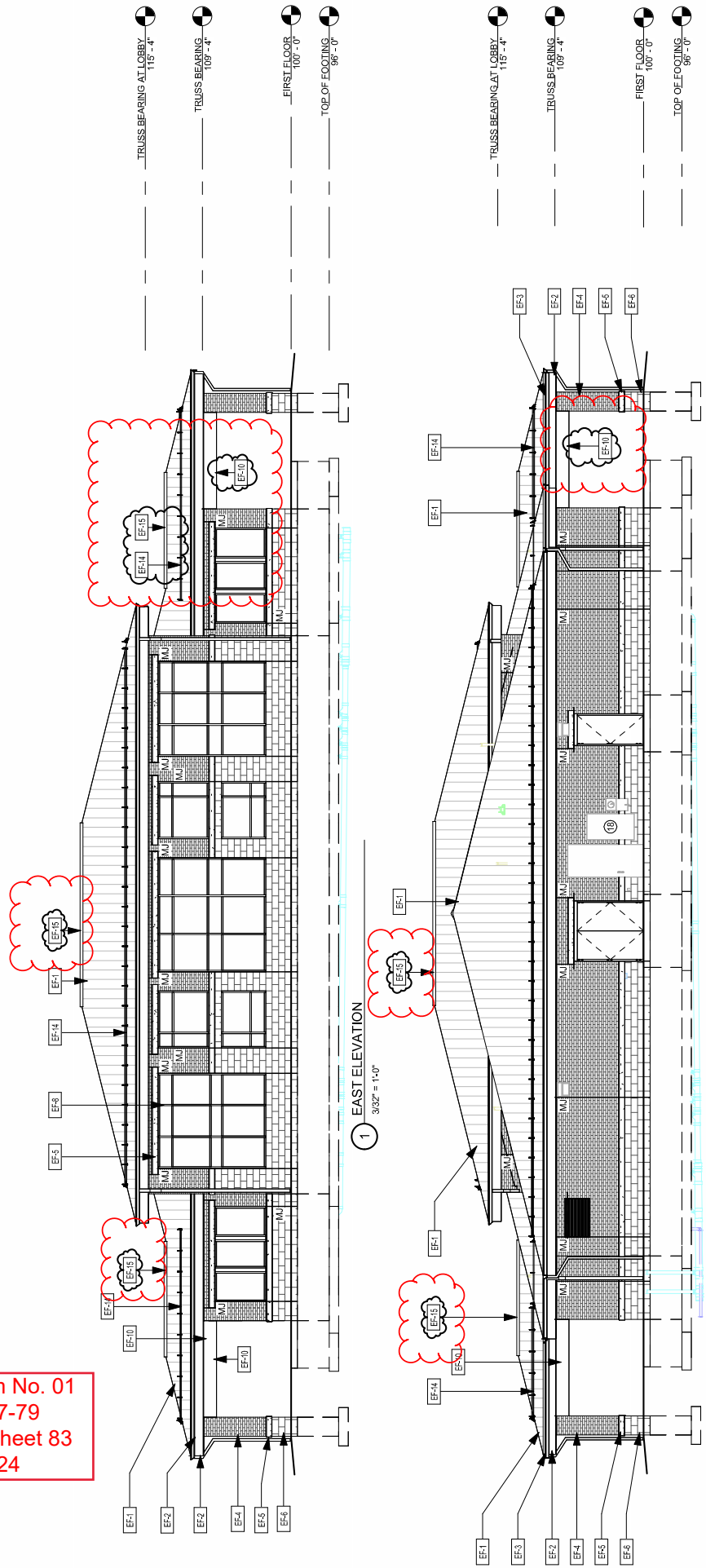
**KEYNOTE LEGEND**

WATERABLE BAND TO RECESS AT CT CABINET TO PROVIDE FLUSH SURFACE FOR MOUNTING. REFER TO ELECTRICAL DOCUMENTS.

**Addendum No. 01**  
**ID 1071-07-79**  
**Revised Sheet 83**  
**May 7, 2024**

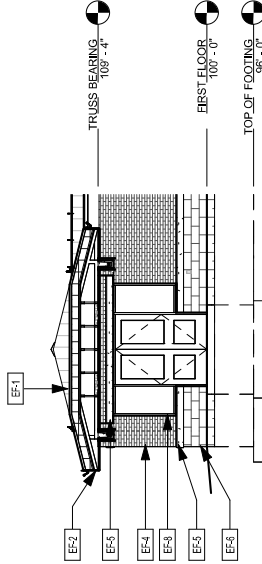
**EXTERIOR FINISH SCHEDULE**

MARK	MATERIAL TYPE	MANUFACTURER	MODEL / SIZE	COLOR	ADDITIONAL INFORMATION	COMMENTS
EF-1	STANDING SEAM ROOFING	UNACIAD	PENCIL RIBBED / UC 6	EXTRA DARK BRONZE		
EF-2	PRE-FIN MIT. FASMA TRIM	UNACIAD		EXTRA DARK BRONZE		
EF-3	PRE-FIN GULLER	UNACIAD		EXTRA DARK BRONZE		
EF-4	BACK	UNACIAD		EXTRA DARK BRONZE		
EF-5	ROOFING	UNACIAD		EXTRA DARK BRONZE		
EF-6	ROOFING	UNACIAD		EXTRA DARK BRONZE		
EF-7	ROOFING	UNACIAD		EXTRA DARK BRONZE		
EF-8	ROOFING	UNACIAD		EXTRA DARK BRONZE		
EF-9	ROOFING	UNACIAD		EXTRA DARK BRONZE		
EF-10	ROOFING	UNACIAD		EXTRA DARK BRONZE		
EF-11	ROOFING	UNACIAD		EXTRA DARK BRONZE		
EF-12	ROOFING	UNACIAD		EXTRA DARK BRONZE		
EF-13	ROOFING	UNACIAD		EXTRA DARK BRONZE		
EF-14	ROOFING	UNACIAD		EXTRA DARK BRONZE		
EF-15	ROOFING	UNACIAD		EXTRA DARK BRONZE		

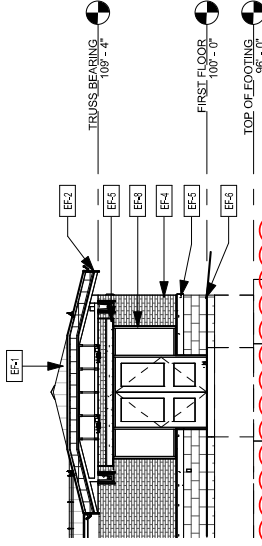


EXTERIOR FINISH SCHEDULE

MARK	MATERIAL TYPE	MANUFACTURER	MODEL / SIZE	COLOR	ADDITIONAL INFORMATION	COMMENTS
EF-1	STANDING SEAM ROOFING	UNACLAD	PENCIL RIBBED / UC 6	EXTRA DARK BRONZE		
EF-2	PRE-FIN MIT. FASMA TRIM	UNACLAD		EXTRA DARK BRONZE		
EF-3	PRE-FIN GULLIES	UNACLAD		DARK BRONZE		
EF-4	BACK	UNACLAD		EXTRA DARK BRONZE		
EF-5	ROOFING	UNACLAD		EXTRA DARK BRONZE		
EF-6	ROOFING	UNACLAD		EXTRA DARK BRONZE		
EF-7	ROOFING	UNACLAD		EXTRA DARK BRONZE		
EF-8	ROOFING	UNACLAD		EXTRA DARK BRONZE		
EF-9	ROOFING	UNACLAD		EXTRA DARK BRONZE		
EF-10	ROOFING	UNACLAD		EXTRA DARK BRONZE		
EF-11	ROOFING	UNACLAD		EXTRA DARK BRONZE		
EF-12	ROOFING	UNACLAD		EXTRA DARK BRONZE		
EF-13	ROOFING	UNACLAD		EXTRA DARK BRONZE		
EF-14	SNOW GUARD	SNG-AX		EXTRA DARK BRONZE		REFER TO ROOF PLAN
EF-15	BRIDGE CAP	SNG-AX		EXTRA DARK BRONZE		

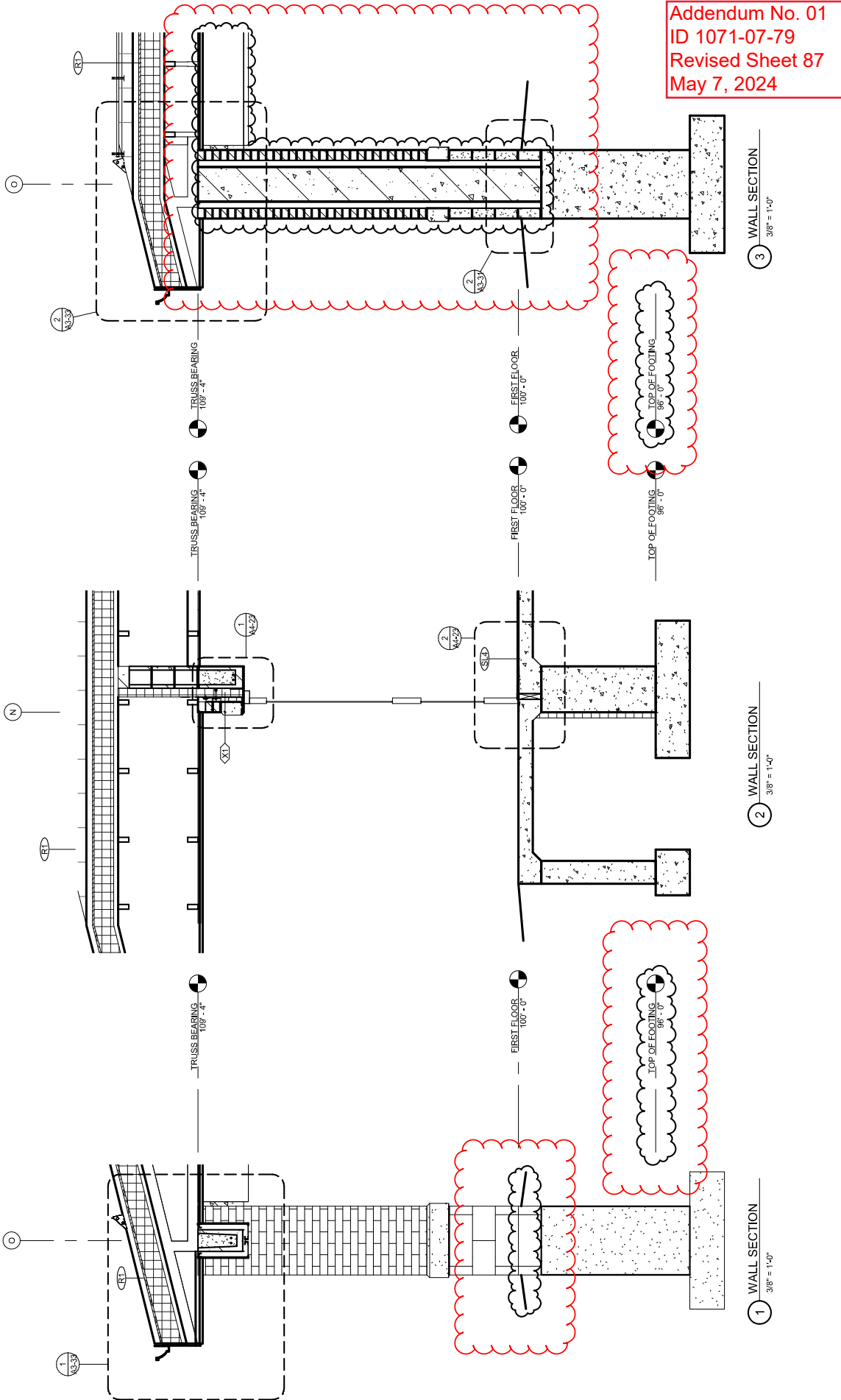


1 NORTH ENTRY ELEVATION  
3/32" = 1'-0"

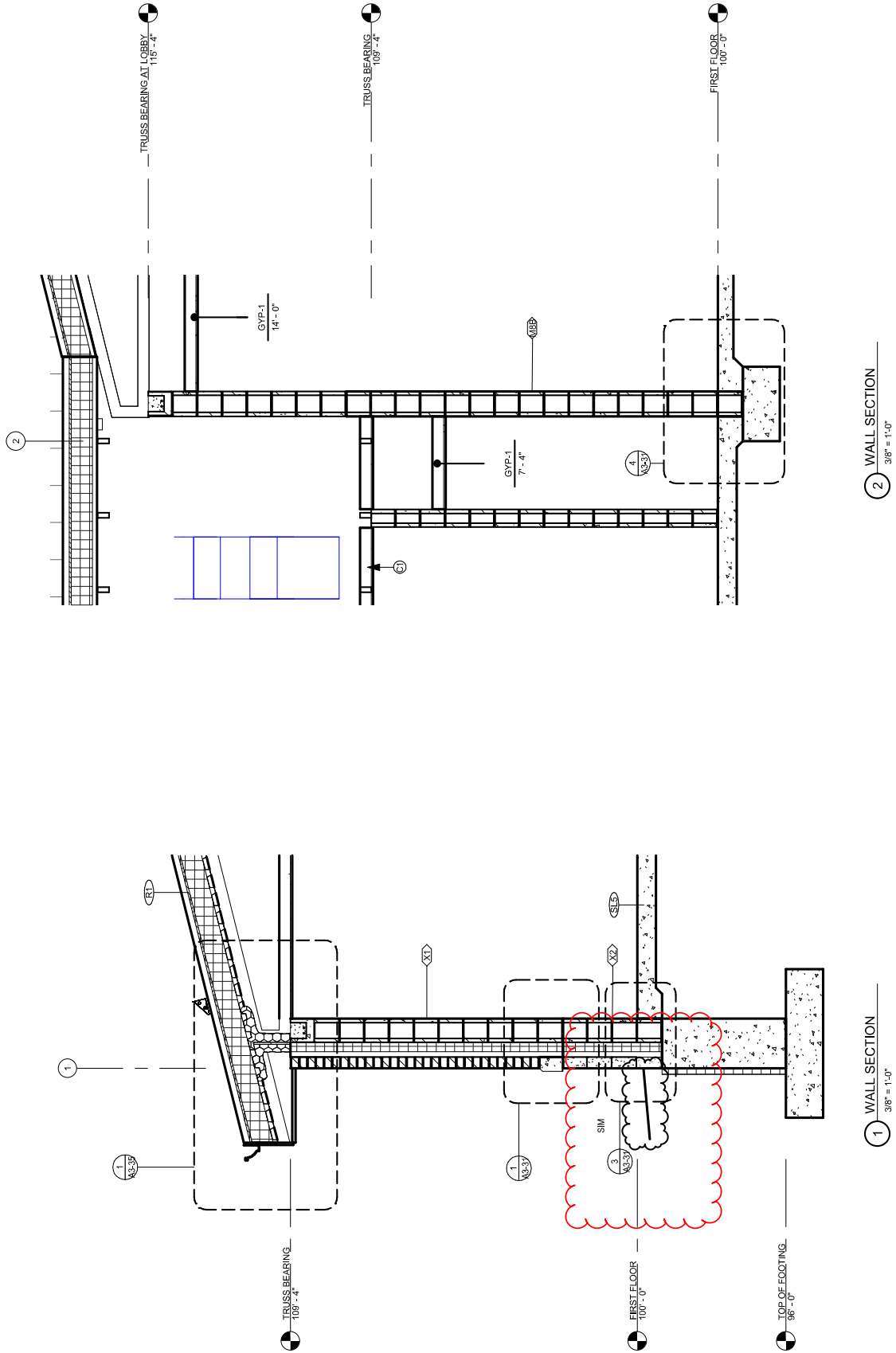


2 SOUTH ENTRY ELEVATION  
3/32" = 1'-0"

Addendum No. 01  
ID 1071-07-79  
Revised Sheet 84  
May 7, 2024



Addendum No. 01  
 ID 1071-07-79  
 Revised Sheet 88  
 May 7, 2024



1 WALL SECTION  
 3/8" = 1'-0"

2 WALL SECTION  
 3/8" = 1'-0"

STATE PROJECT NUMBER: 1071-07-79

HWY: IH 90

COUNTY: MONROE

WALL SECTIONS

SHEET NO: A3-22

88

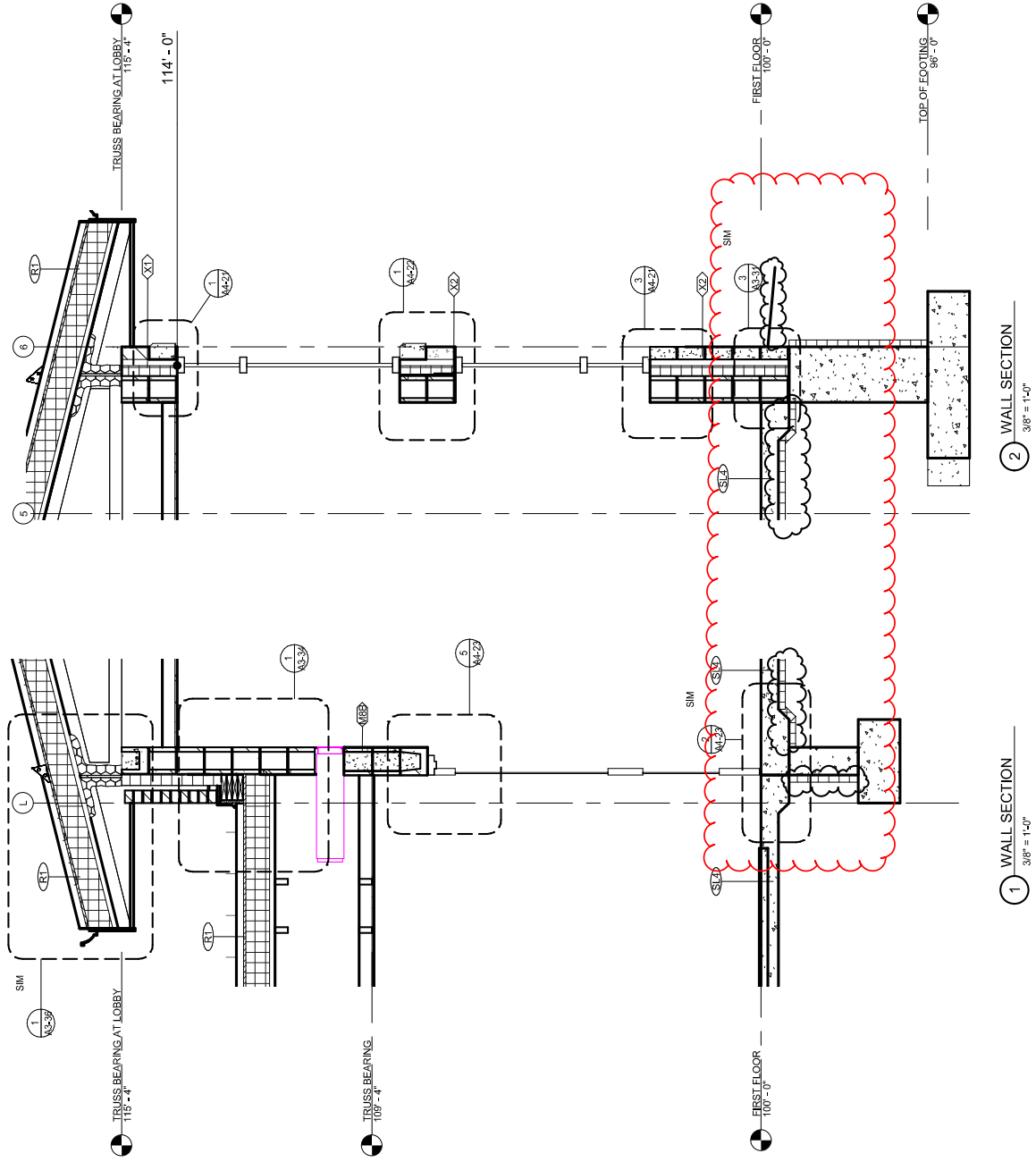
PLOT SCALE: AS INDICATED

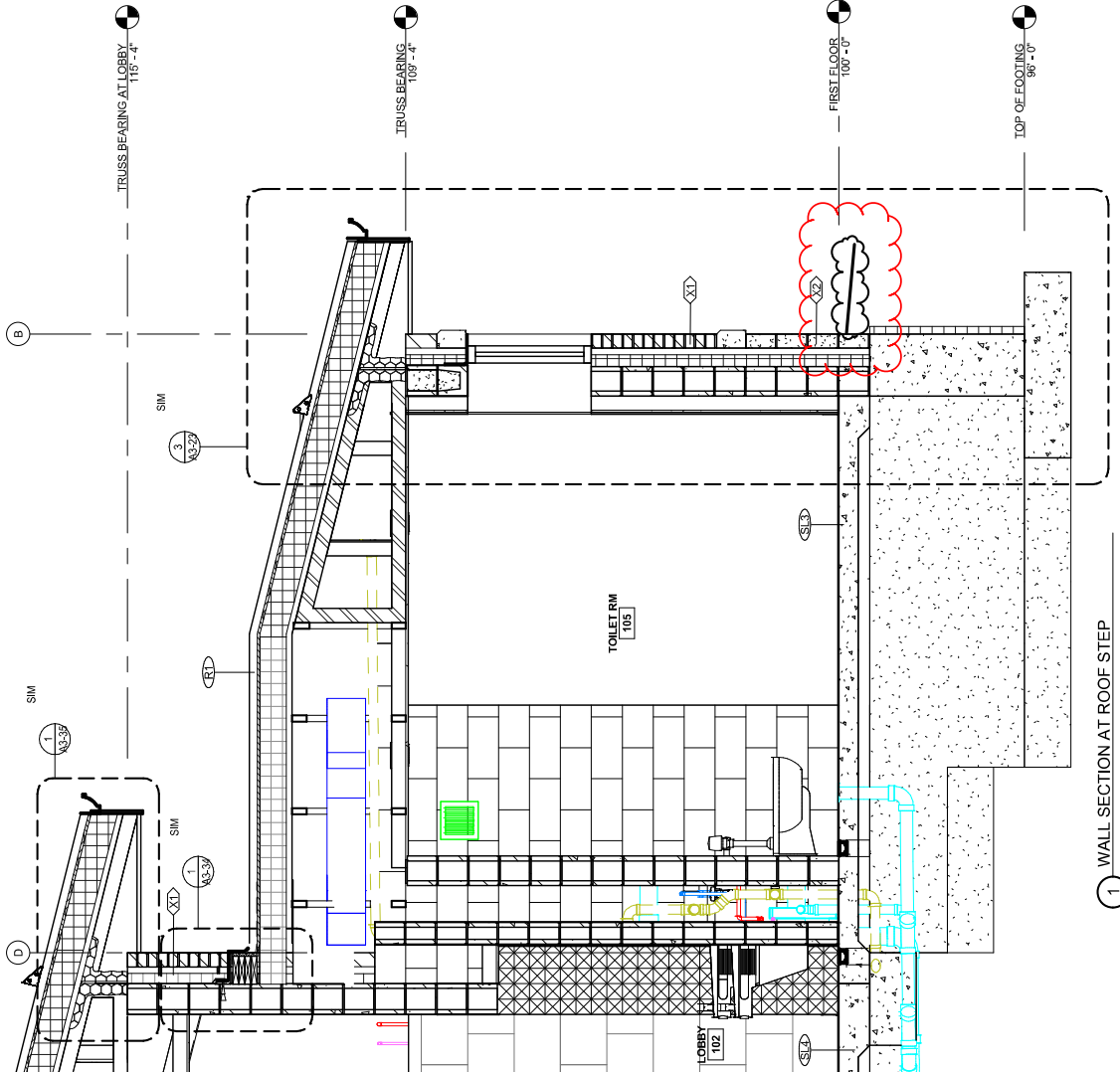
PLOT NAME: NSS

PLOT BY: ISG ILC

PLOT DATE: 4/29/2024 9:15:34 AM

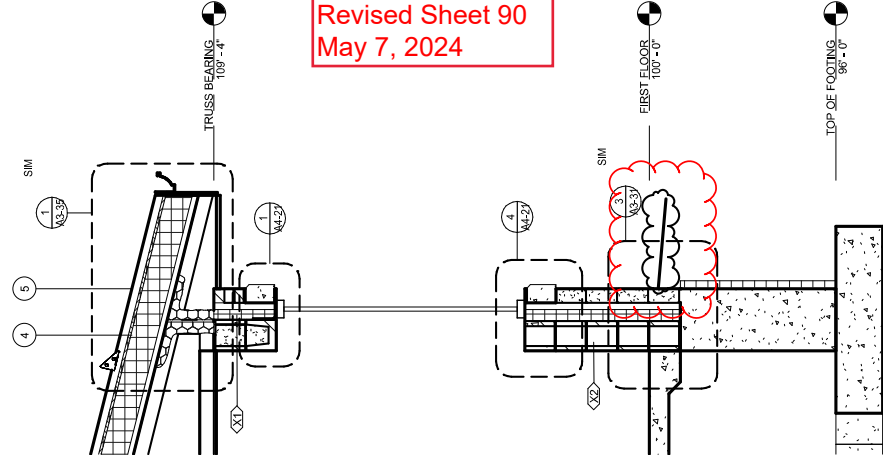
Addendum No. 01  
 ID 1071-07-79  
 Revised Sheet 89  
 May 7, 2024



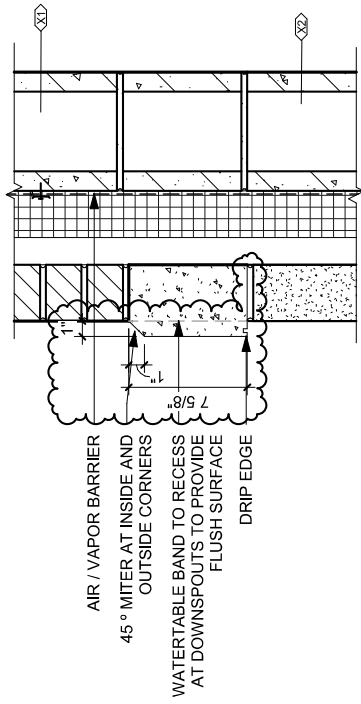


1 WALL SECTION AT ROOF STEP  
3/8" = 1'-0"

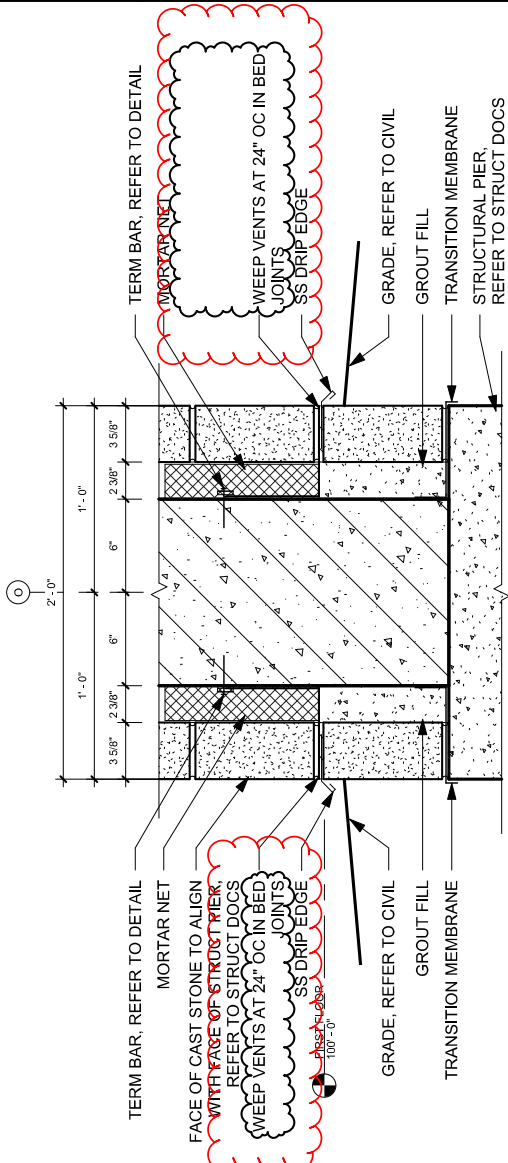
Addendum No. 01  
ID 1071-07-79  
Revised Sheet 90  
May 7, 2024



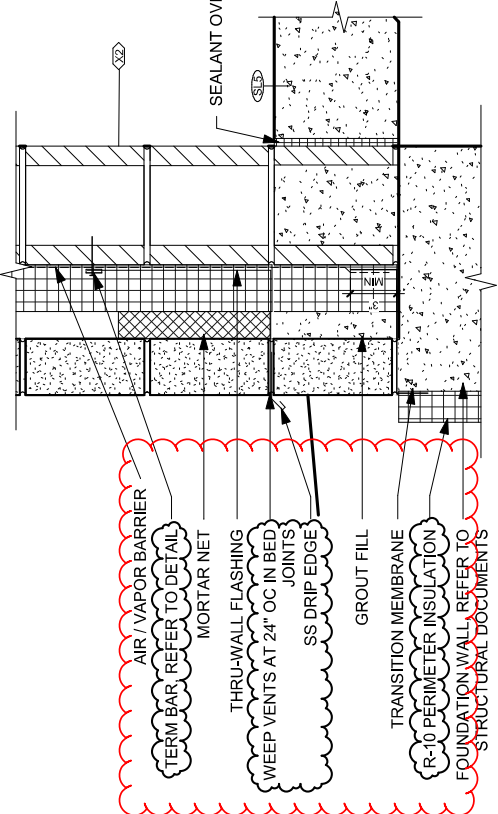
2 WALL SECTION  
3/8" = 1'-0"



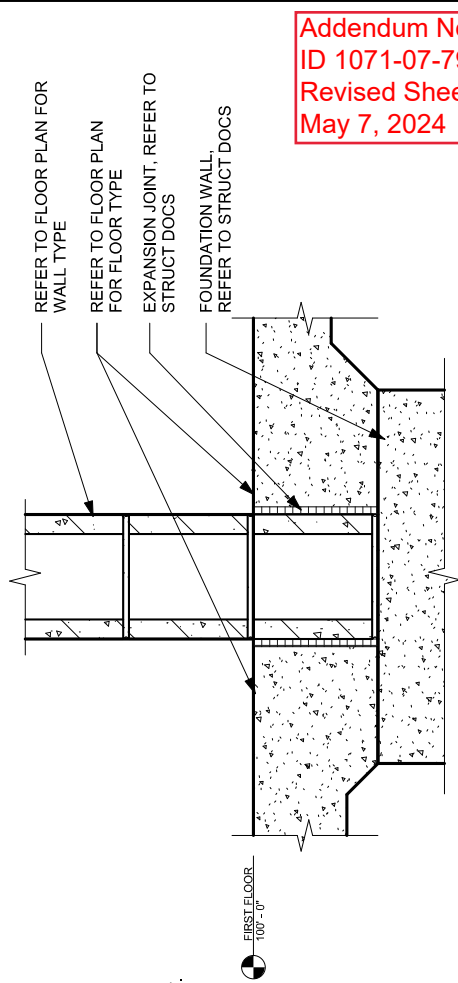
1 X1 AND X2 TRANSITION DETAIL  
1 1/2" = 1'-0"



2 WALL BASE AT COLUMN DETAIL  
1 1/2" = 1'-0"



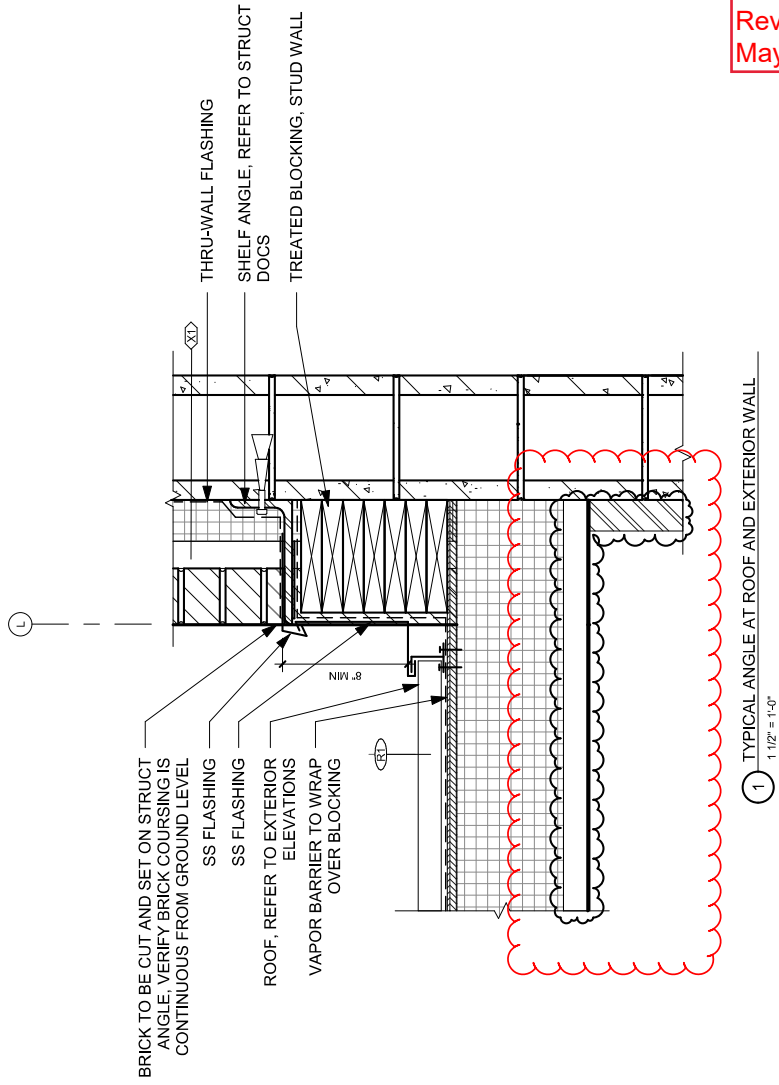
3 WALL BASE AT X2 DETAIL  
1 1/2" = 1'-0"



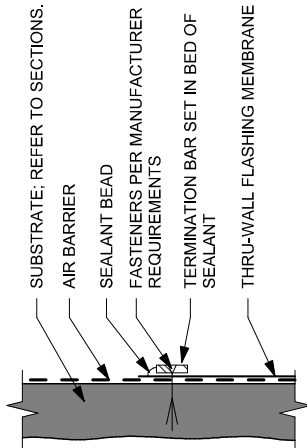
4 INTERIOR WALL AT FOUNDATION DETAIL  
1 1/2" = 1'-0"

Addendum No. 01  
ID 1071-07-79  
Revised Sheet 91  
May 7, 2024

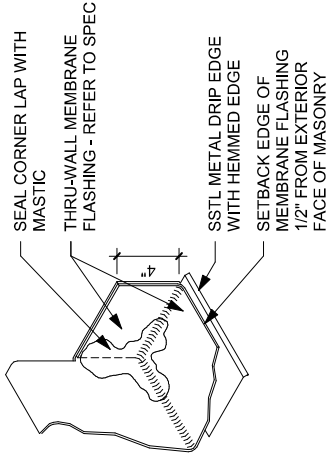
Addendum No. 01  
 ID 1071-07-79  
 Revised Sheet 94  
 May 7, 2024



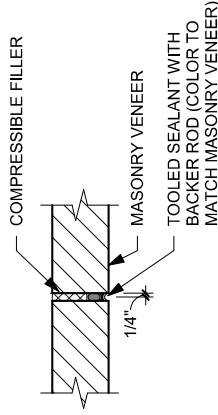




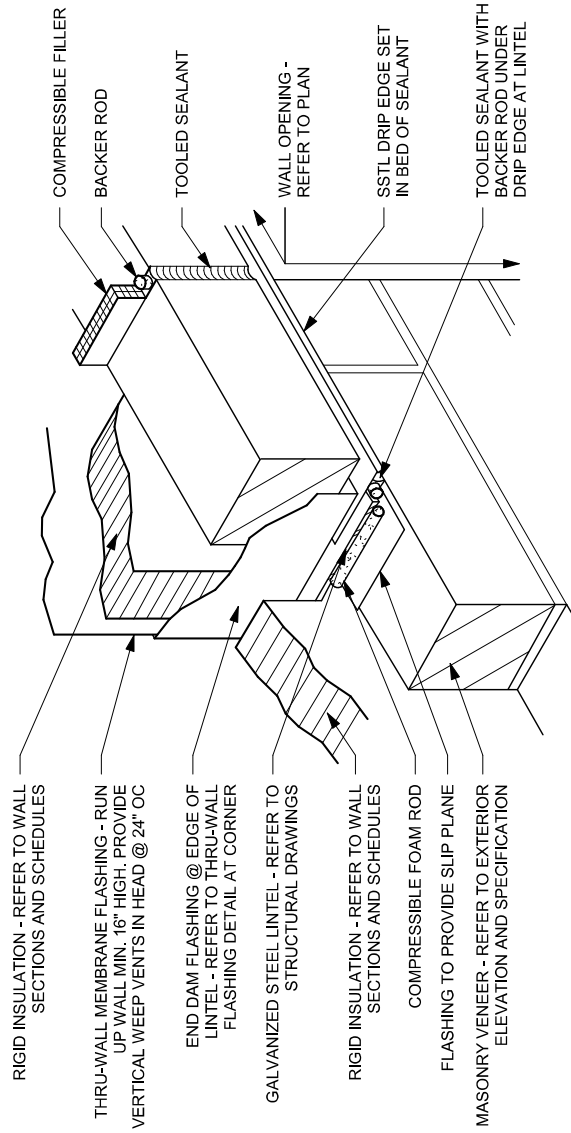
1 TERMINATION BAR DETAIL  
3" = 1'-0"



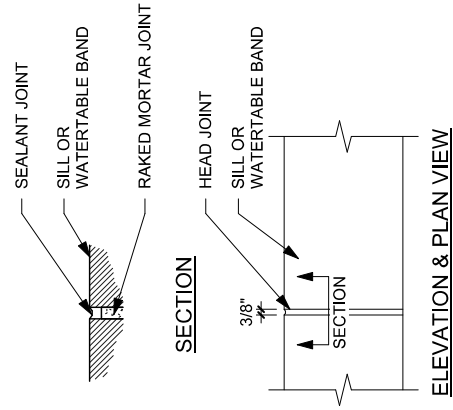
2 VENEER THRU WALL FLASHING END DAM  
1 1/2" = 1'-0"



3 MASONRY VENEER CONTROL JOINT DETAIL  
1 1/2" = 1'-0"



4 MASONRY VENEER CONTROL JOINT AT OPENING  
1" = 1'-0"



5 WALL CAP JOINT DETAIL  
1 1/2" = 1'-0"

Addendum No. 01  
ID 1071-07-79  
Added Sheet 97A  
May 7, 2024

DOOR SCHEDULE

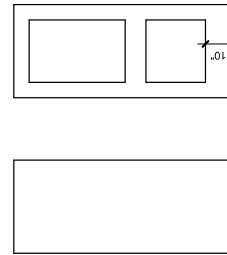
MARK	ROOM NAME	WIDTH	HEIGHT	DOOR TYPE	DOOR MATERIAL	FRAME TYPE	AAOS Project HW Set	COMMENTS
001	CHASE	4'-0"	7'-0"	FL	HOLLOW METAL	2		
107A	VESTIBULE	6'-0"	7'-10"	FGT	ALUMINUM	AL1		
107B	LOBBY	6'-0"	7'-10"	FGT	ALUMINUM	AL2		
103A	VESTIBULE	6'-0"	7'-10"	FGT	ALUMINUM	AL1		
103B	LOBBY	6'-0"	7'-10"	FGT	ALUMINUM	AL2		
105	TOILET RM	3'-0"	7'-0"	FL	HOLLOW METAL	2		
106A	TOILET RM	3'-0"	7'-0"	FL	HOLLOW METAL	2		
106B	WOMEN	4'-0"	7'-0"	FL	HOLLOW METAL	3		DOOR CAN BE LOCKED INTO ALTERNATE JAMB WHEN OPENED 90°
107A	MEN	4'-0"	7'-0"	FL	HOLLOW METAL	3		DOOR CAN BE LOCKED INTO ALTERNATE JAMB WHEN OPENED 90°
107B	MEN	4'-0"	7'-0"	FL	HOLLOW METAL	3		DOOR CAN BE LOCKED INTO ALTERNATE JAMB WHEN OPENED 90°
108A	WOMEN	4'-0"	7'-0"	FL	HOLLOW METAL	3		DOOR CAN BE LOCKED INTO ALTERNATE JAMB WHEN OPENED 90°
108B	WOMEN	4'-0"	7'-0"	FL	HOLLOW METAL	3		DOOR CAN BE LOCKED INTO ALTERNATE JAMB WHEN OPENED 90°
108A	MEN	4'-0"	7'-0"	FL	HOLLOW METAL	2		DOOR CAN BE LOCKED INTO ALTERNATE JAMB WHEN OPENED 90°
108B	MEN	4'-0"	7'-0"	FL	HOLLOW METAL	3		DOOR CAN BE LOCKED INTO ALTERNATE JAMB WHEN OPENED 90°
110A	BREAKROOM	3'-0"	7'-0"	FL	HOLLOW METAL	2		
110B	BREAKROOM	4'-0"	7'-0"	FL	HOLLOW METAL	2		
111A	JANITOR	6'-0"	7'-0"	FL	HOLLOW METAL	2		
111B	JANITOR	4'-0"	7'-0"	FL	HOLLOW METAL	2		
112A	OFFICE	3'-0"	7'-0"	FL	HOLLOW METAL	2		
112B	OFFICE	3'-0"	7'-0"	FL	HOLLOW METAL	2		
113A	OFFICE	3'-0"	7'-0"	FL	HOLLOW METAL	2		
113B	OFFICE	3'-0"	7'-0"	FL	HOLLOW METAL	2		
114	OFFICE	3'-0"	7'-0"	FL	HOLLOW METAL	2		
115	JANITOR	3'-0"	7'-0"	FL	HOLLOW METAL	2		

Addendum No. 01  
ID 1071-07-79  
Revised Sheet 99  
May 7, 2024

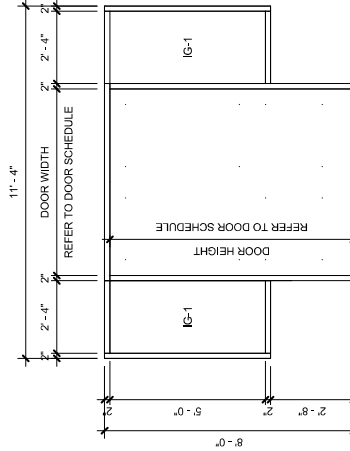
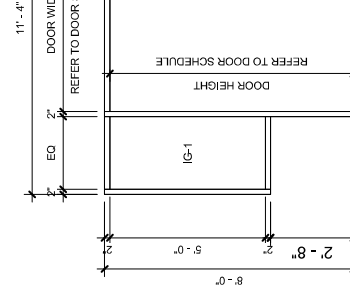
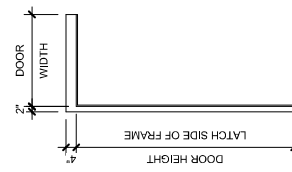
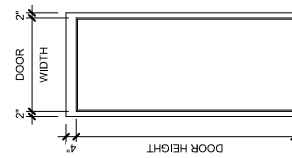
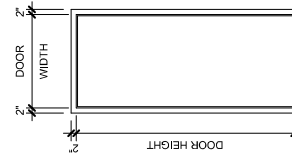
GLAZING SCHEDULE

MARK	MATERIAL	THICKNESS	COMMENTS
G-1	TEMPERED	1/4"	INTERIOR WINDOWS, UNO
IG-1	INSULATED, TEMPERED	1"	EXTERIOR WINDOWS, UNO
IG-2	INSULATED, TEMPERED, BIRD SAFE FILM	1"	VIRACON, 1% COVERAGE 51777 BIRD FRIENDLY
IG-3	INSULATED, TEMPERED, PRIVACY FILM	1"	VIRACON, VEI-2M

DOOR TYPE



FRAME TYPES



FL FLUSH

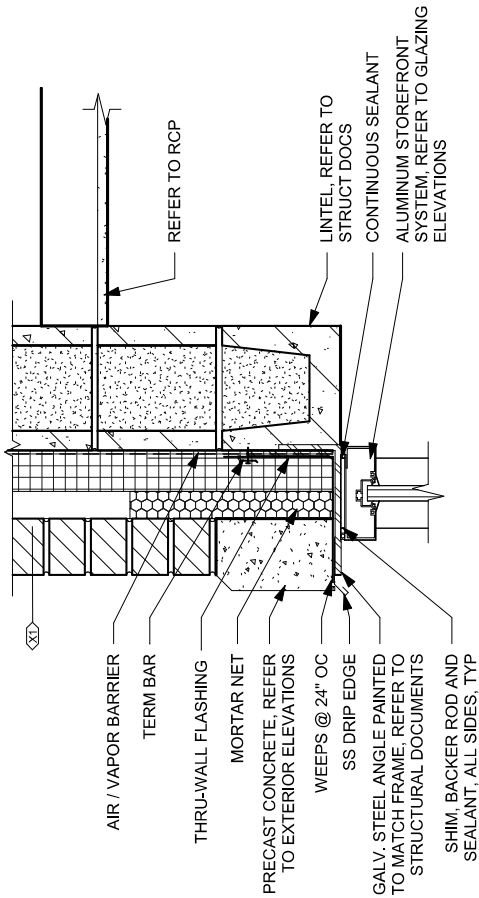
1 METAL FRAME

2 METAL FRAME W/ MASONRY HEAD

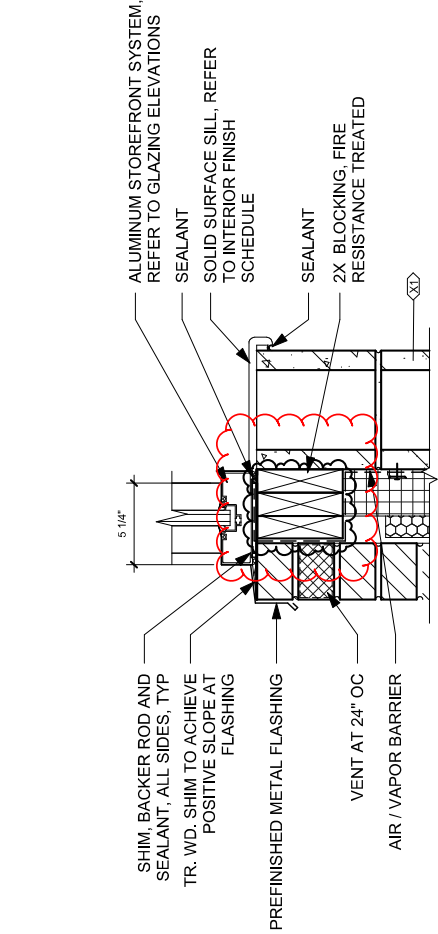
3 METAL FRAME W/ MASONRY HEAD

AL1

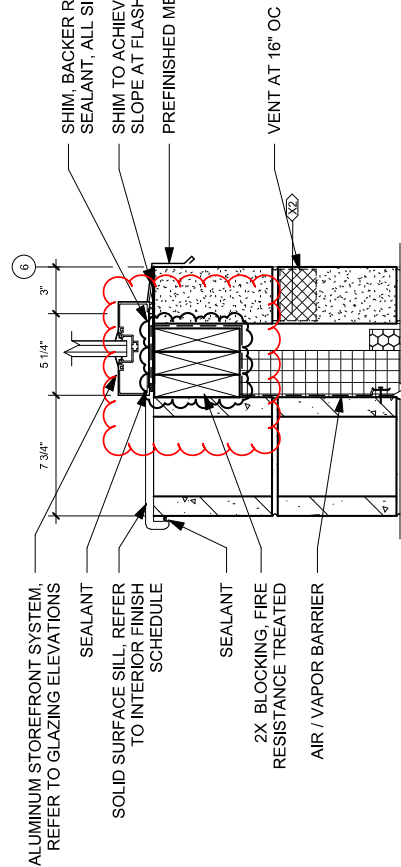
AL2



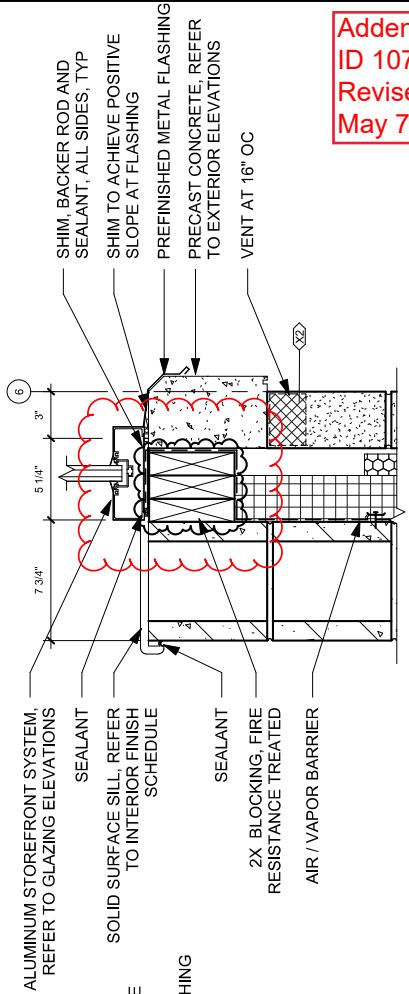
1 WINDOW HEAD AT X1 DETAIL  
1 1/2" = 1'-0"



2 WINDOW SILL AT X1 DETAIL  
1 1/2" = 1'-0"

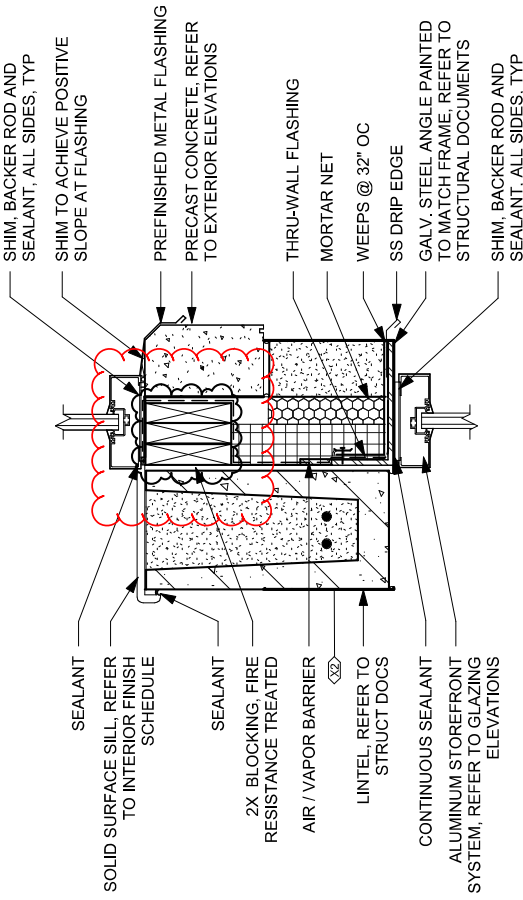


3 WINDOW SILL AT X2 DETAIL  
1 1/2" = 1'-0"

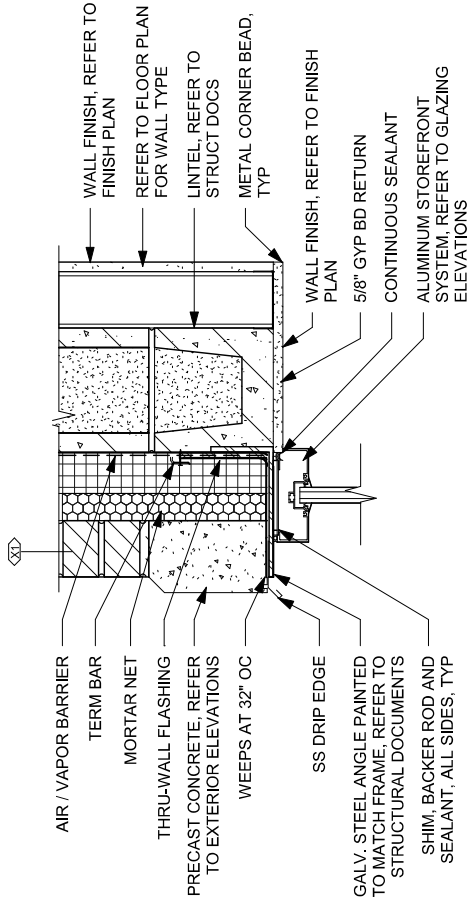


4 WINDOW SILL AT X2 TRANSITION DETAIL  
1 1/2" = 1'-0"

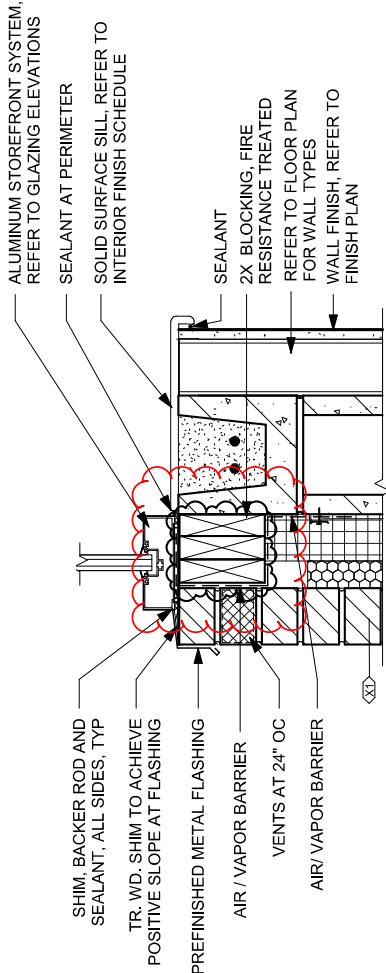
Addendum No. 01  
ID 1071-07-79  
Revised Sheet 102  
May 7, 2024



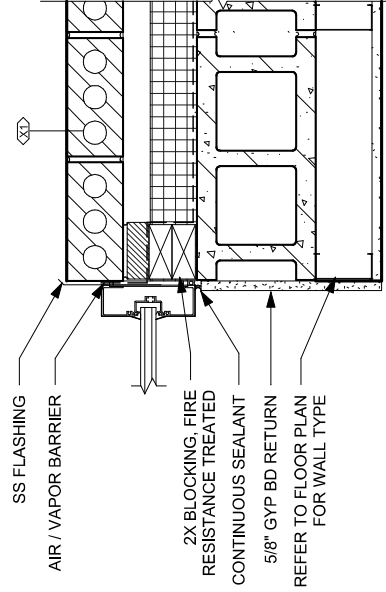
1 WINDOW HEAD AND WINDOW SILL AT X2 DETAIL  
1 1/2" = 1'-0"



2 WINDOW HEAD AT X1 AND FURRED WALL DETAIL  
1 1/2" = 1'-0"



3 WINDOW SILL AT X1 AND FURRED WALL DETAIL  
1 1/2" = 1'-0"



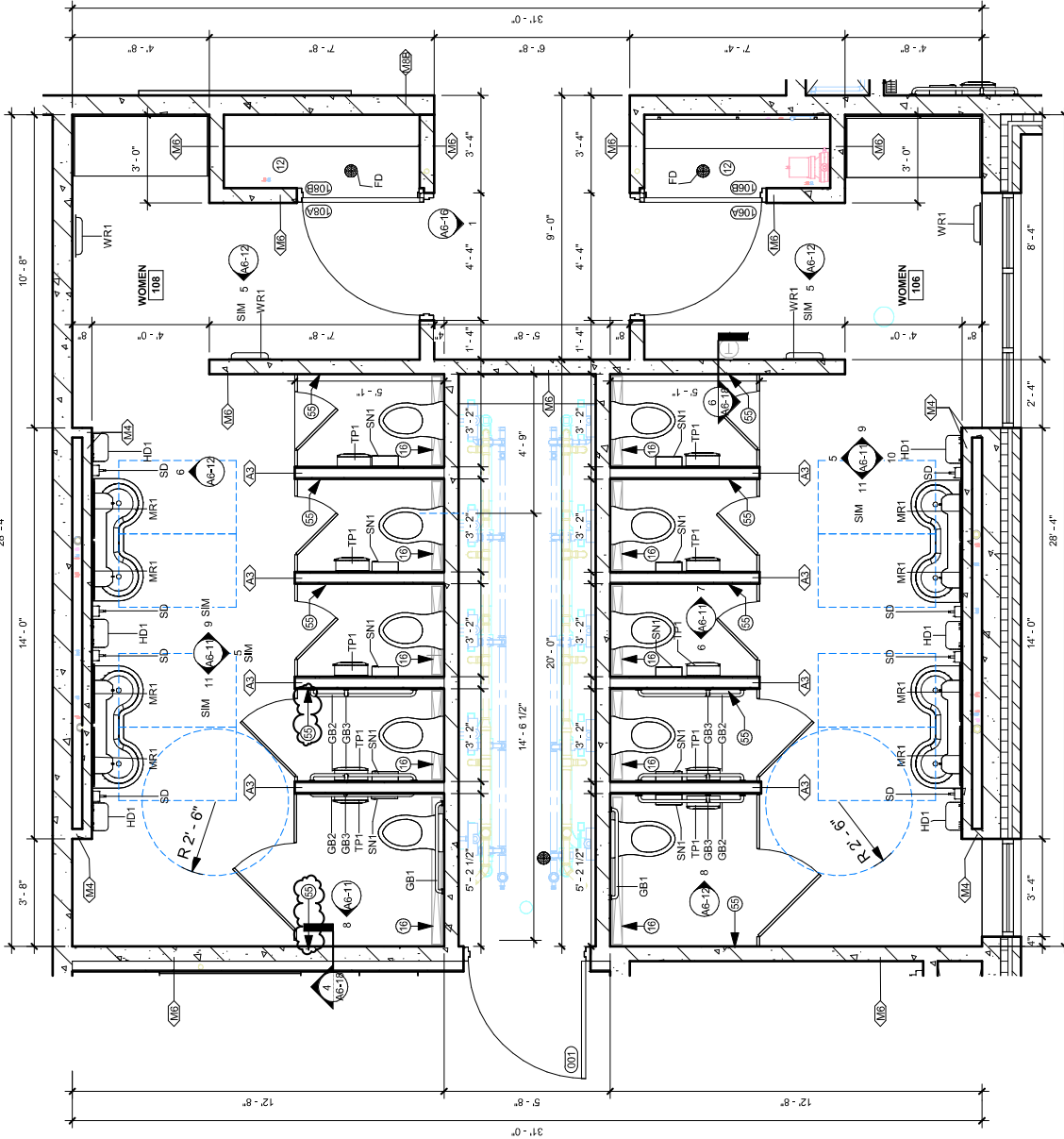
4 WINDOW JAMB AT Z1 AND FURRED WALL DETAIL  
1 1/2" = 1'-0"

Addendum No. 01  
ID 1071-07-79  
Revised Sheet 103  
May 7, 2024

MARK	DESCRIPTION	COMMENTS	PROVIDED BY	INSTALLED BY
CT	ADJUSTABLE HEIGHT CHANGING STATION	KB3000	CONTRACTOR	CONTRACTOR
GB1	GRAB BAR 36"		CONTRACTOR	CONTRACTOR
GB2	GRAB BAR 42"		CONTRACTOR	CONTRACTOR
GB3	GRAB BAR 18"		CONTRACTOR	CONTRACTOR
GB4	GRAB BAR 24"		CONTRACTOR	CONTRACTOR
MR1	MIRROR SURFACE MOUNTED	STAINLESS STEEL SAFETY MIRROR	OWNER	CONTRACTOR
SD	SOAP DISPENSER		OWNER	CONTRACTOR
SH	SOBRICK RECESSED SHARP DISPOSAL		CONTRACTOR	CONTRACTOR
SN1	SANITARY NAPKIN DISPOSAL - SURFACE MOUNTED		OWNER	CONTRACTOR
TP1	TOILET TISSUE DISPENSER		OWNER	CONTRACTOR
WR1	WASTE - RECESS MOUNTED		CONTRACTOR	CONTRACTOR

KEYNOTE LEGEND	
12	HOUSE BIBB (HOT AND COLD) IN CLOSET.
16	TOILET PAPER DISPENSER. REFER TO PLUMBING DOCS FOR ADDITIONAL INFORMATION.
55	COAT HOOK LOCATED IN NOOK. REFER TO ELEVATIONS AND INTERIOR DETAILS FOR ADDITIONAL INFORMATION.

Addendum No. 01  
 ID 1071-07-79  
 Revised Sheet 107  
 May 7, 2024



1 ENLARGED FLOOR PLAN - WOMENS RESTROOMS  
 1/4" = 1'-0"

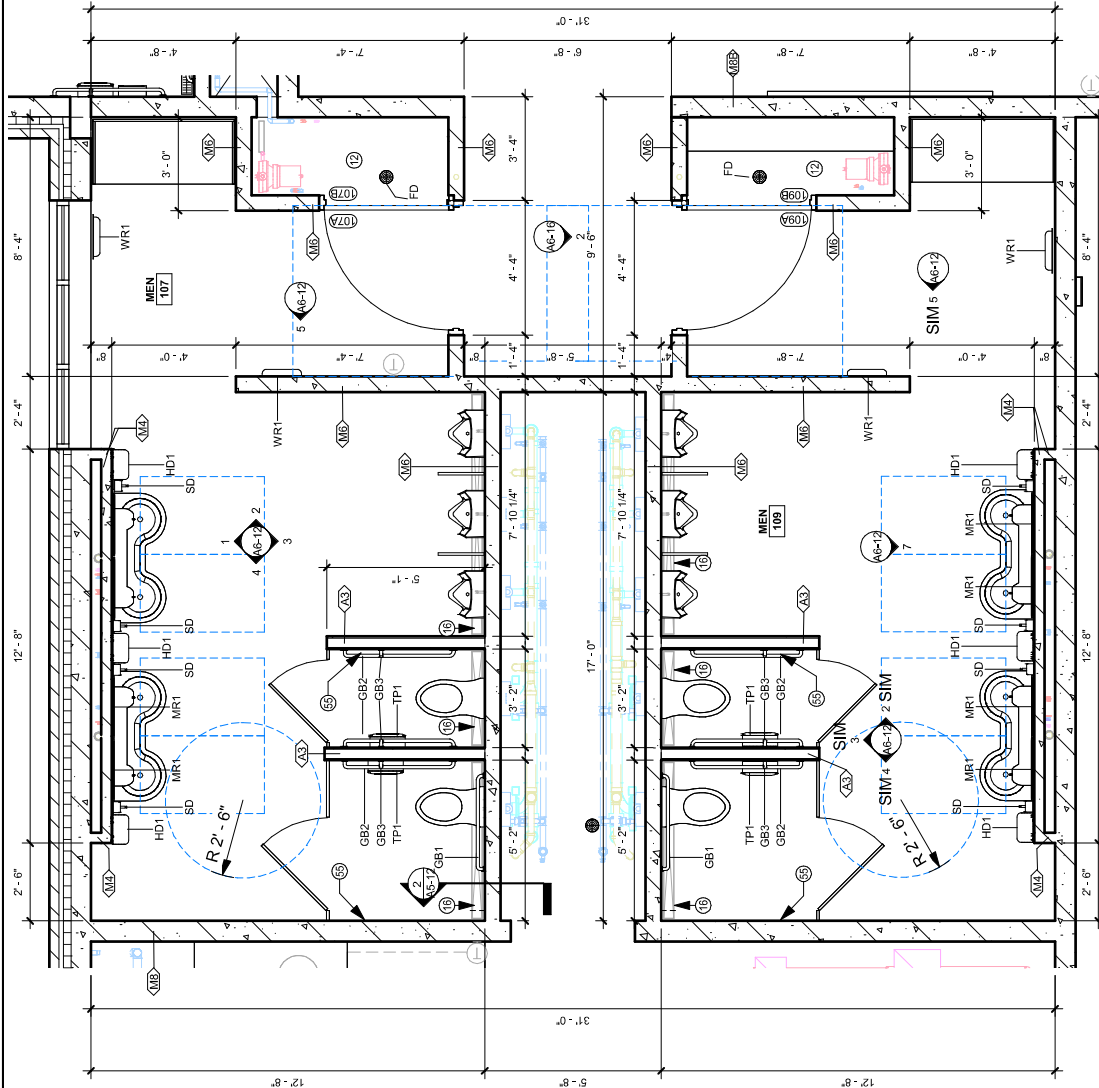
EQUIPMENT SCHEDULE

MARK	DESCRIPTION	COMMENTS	PROVIDED BY	INSTALLED BY
CT	ADJUSTABLE HEIGHT CHANGING STATION		CONTRACTOR	CONTRACTOR
GB1	GRAB BAR 36"		CONTRACTOR	CONTRACTOR
GB2	GRAB BAR 42"		CONTRACTOR	CONTRACTOR
GB3	GRAB BAR 18"		CONTRACTOR	CONTRACTOR
HD1	HAND DRYER - SURFACE MOUNTED		CONTRACTOR	CONTRACTOR
MR1	MIRROR 24" X 31"		CONTRACTOR	CONTRACTOR
SD	SOAP DISPENSER		OWNER	CONTRACTOR
SH	SOBRICK RECESSED SHARP DISPOSAL		CONTRACTOR	CONTRACTOR
SN1	SANITARY NAPKIN DISPOSAL - SURFACE MOUNTED		OWNER	CONTRACTOR
TP1	TOILET TISSUE DISPENSER		OWNER	CONTRACTOR
WR1	WASTE - RECESS MOUNTED		CONTRACTOR	CONTRACTOR

KEYNOTE LEGEND

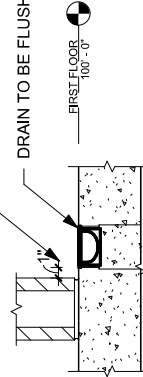
12	HOSE BIBB (HOT AND COLD) IN CLOSET.
16	TRENCH DRAIN, SEE DETAIL 2/A5-12. REFER TO PLUMBING CONTRACTOR FOR DETAILS AND ELEVATIONS.
55	COAT HOOK LOCATED IN LOCK, REFER TO ELEVATIONS AND INTERIOR DETAILS FOR ADDITIONAL INFORMATION.

Addendum No. 01  
 ID 1071-07-79  
 Revised Sheet 108  
 May 7, 2024



1 ENLARGED FLOOR PLAN - MENS RESTROOMS  
1/4" = 1'-0"

1" CLEARANCE FROM EDGE OF DRAIN TO FACE OF CMU / GYP BD. REFER TO FLOOR PLAN FOR WALL TYPE  
 DRAIN TO BE FLUSH W/ FLOOR



2 TRENCH DRAIN DETAIL  
1" = 1'-0"



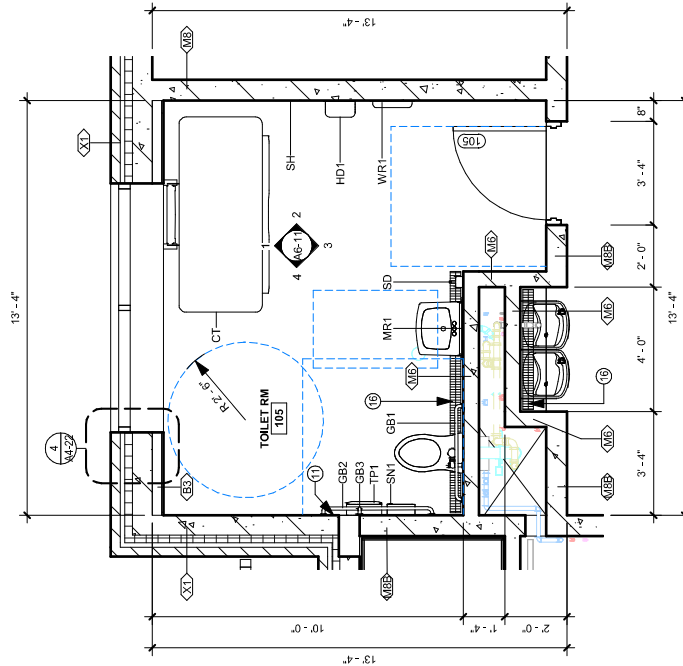
**KEYNOTE LEGEND**

11	ALIGN EXTERIOR WALL FACE CMU WITH INTERIOR WALL FACE (DRAIN, SEE REF. 2 / AS-10, REFER TO PLUMBING DECS FOR ADDITIONAL INFORMATION)
16	

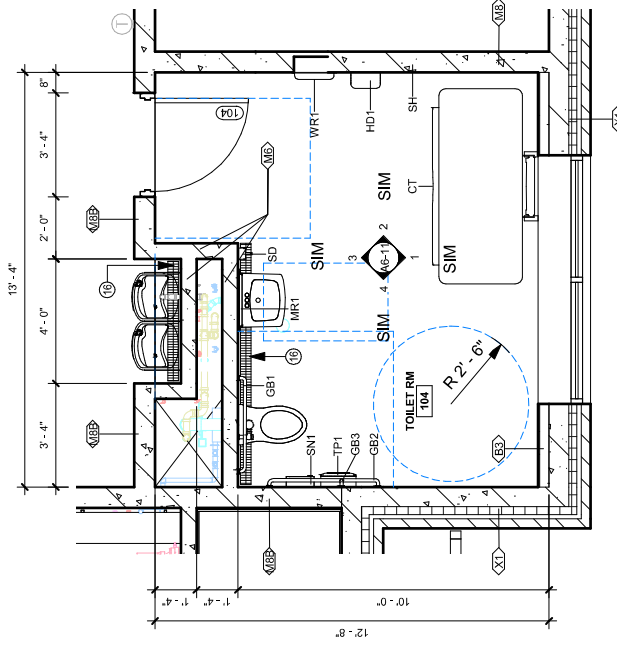
**EQUIPMENT SCHEDULE**

MARK	DESCRIPTION	COMMENTS	PROVIDED BY	INSTALLED BY
CT	ADJUSTABLE HEIGHT CHANGING STATION	KB3000	CONTRACTOR	CONTRACTOR
GB1	GRAB BAR 36"		CONTRACTOR	CONTRACTOR
GB2	GRAB BAR 42"		CONTRACTOR	CONTRACTOR
GB3	GRAB BAR 18"		CONTRACTOR	CONTRACTOR
MR1	MIRROR - SURFACE MOUNTED		OWNER	CONTRACTOR
MR2	MIRROR 24" X 31"		OWNER	CONTRACTOR
SD	SOAP DISPENSER		OWNER	CONTRACTOR
SH	BOBBICK RECESSED SHARP DISPOSAL		CONTRACTOR	CONTRACTOR
SN1	SANITARY NAPKIN DISPOSAL - SURFACE MOUNTED		OWNER	CONTRACTOR
TP1	TOILET TISSUE DISPENSER		OWNER	CONTRACTOR
WR1	WASTE - RECESS MOUNTED		CONTRACTOR	CONTRACTOR

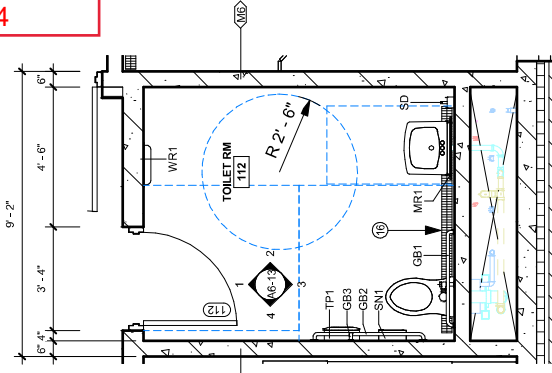
Addendum No. 01  
ID 1071-07-79  
Revised Sheet 109  
May 7, 2024



1 ENLARGED FLOOR PLAN -  
TOILET RM 105  
1/4" = 1'-0"



2 ENLARGED FLOOR PLAN -  
TOILET RM 104  
1/4" = 1'-0"



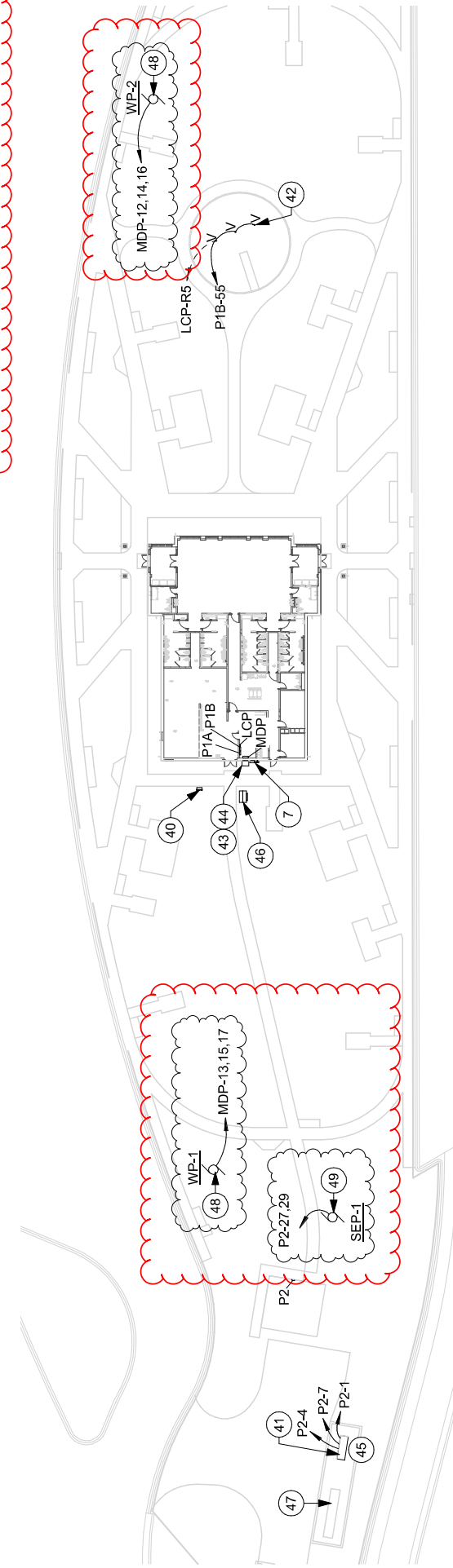
3 ENLARGED FLOOR PLAN -  
TOILET RM 112  
1/4" = 1'-0"



# ELECTRICAL KEYNOTE LEGEND

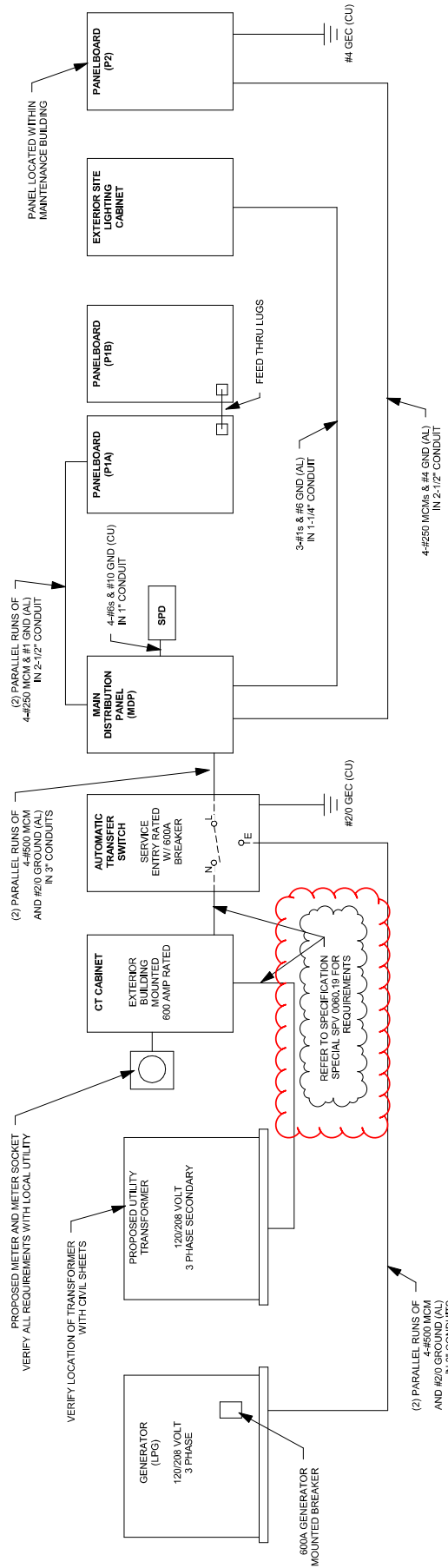
7	PROPOSED CT CABINET AND METER LOCATION. REFER TO ELECTRICAL RISER FOR DETAILS.
40	PROPOSED LOCATION FOR SITE LIGHTING CONTROL CABINET. REFER TO RISER DIAGRAM FOR DETAILS. SEE CIVIL EXTERIOR LIGHTING DRAWINGS FOR CABINET REQUIREMENTS AND DETAILS.
41	F&I LPG GENERATOR. COORDINATE FINAL SITE LOCATION WITH CIVIL DRAWINGS AS LOCATION SHOWN IS DIAGRAMMATIC TO SHOW CONNECTIONS ONLY. REFER TO RISER AND SPECIFICATIONS FOR REQUIREMENTS.
42	F&I FLOODLIGHTS FOR FLAG POLE LOCATIONS. MOUNTING BASE SHALL BE OFFSET 5' FROM POLE. REFER TO RISER AND SPECIFICATIONS THROUGH LIGHTING CONTACTOR. SEE DETAILS FOR MOUNTING BASE REQUIREMENTS.
43	EXTERIOR BUILDING MOUNTED AUTOMATIC TRANSFER SWITCH. REFER TO ELECTRICAL RISER AND SPECIFICATIONS FOR REQUIREMENTS.
44	PROVIDE 1" CONDUIT WITH GENERATOR SUPPLIER RECOMMENDED WIRING FOR START/STOP SIGNAL FROM ATS TO GENERATOR CONTROLS.
45	PROVIDE CIRCUITS FOR GENERATOR CIRCUIT BREAKER, BATTERY CHARGER, AND ENGINE START/STOP SIGNALS.
46	PROPOSED UTILITY TRANSFORMER LOCATION. CONFIRM LOCATION WITH CIVIL DRAWINGS.
47	PROVIDE 1" CONDUIT WITH (2) #18 AWG SHIELDED TWISTED PAIR, BELDEN 8770 OR EQUAL AND (4) #14 AWG CONDUCTORS FROM LP TANK SENSOR TO REMOTE MOUNTED AND CONTROL SUPPLIER. LOCATION OF REMOTE MOUNTED CONTROL SUPPLIER SHALL BE APPROXIMATELY 10' FROM TANK WITHIN BEST AVAILABLE BUILDING WITH SYSTEM ACCESSIBLE TO SERVICE PERSONNEL.
48	APPROXIMATE LOCATION FOR WELL PUMP. REFER TO SITE PLANS FOR ACTUAL LOCATIONS OF WELLS.
49	APPROXIMATE LOCATION FOR SEWAGE EJECTOR PUMP.

Addendum No. 01  
 ID 1071-07-79  
 Revised Sheet 195  
 May 7, 2024



1 ELECTRICAL SITE PLAN  
 1" = 50'-0"





Addendum No. 01  
 ID 1071-07-79  
 Revised Sheet 201  
 May 7, 2024

**1** ELECTRICAL RISER DIAGRAM  
 NOT TO SCALE

STATE PROJECT NUMBER: 1071-07-79	HWY: IH 90	COUNTY: MONROE	ELECTRICAL RISER DIAGRAM	SHEET NO: E4-11	201	E
			PLOT NAME: RDS		PLOT SCALE: AS INDICATED	
			PLOT DATE: 4/29/2024 3:00:42 PM			

### Distrib. Panel: MDP

Location: ELECT / IT 115  
 Supply From:  
 Mounting: Surface  
 Enclosure: Type 1

Volts: 120/208 Wye  
 Phases: 3  
 Wires: 4

A.I.C. Rating: 35 kAIC  
 Mains Type: MLO  
 Mains Rating: 600 A  
 MCB Rating: 600 A

Notes:

CKT	Circuit Description	Trip	Pole	A	B	C	Pole	Trip	Circuit Description	CKT
1				50103	13920					2
3	PANELS P1A & P1B	400 A	3		50152	14488	3	200 A	PANEL P2	4
5						49826				6
7				0	5000					8
9	SURGE PROTECTIVE DEVICE	60 A	3		0	5000				10
11	(SPD)								EXTERIOR LIGHTING CABINET	10
13				3699	3699	0	3	40 A	WELL PUMP #2	12
15	WELL PUMP #1	40 A	3		3699	3699				14
17									BLANK	16
				<b>Total Load:</b>	76420 VA	77037 VA				18
				<b>Total Amps:</b>	643 A	648 A				19

Legend:

Load Classification	Connected Load	Demand Factor	Estimated...	Panel Totals
HVAC	101151 VA	100.00%	101151 VA	
Heating	34500 VA	100.00%	34500 VA	<b>Total Conn. Load:</b> 225246 VA
Lighting	4785 VA	100.00%	4785 VA	<b>Total Est. Demand:</b> 220806 VA
Lighting - Exterior	76 VA	100.00%	76 VA	<b>Total Conn.:</b> 625 A
Motor	26772 VA	100.00%	26772 VA	<b>Total Est. Demand:</b> 613 A
Other	2706 VA	100.00%	2706 VA	
Power	26550 VA	100.00%	26550 VA	
Receptacle	18880 VA	76.48%	14440 VA	
Spare	10000 VA	100.00%	10000 VA	

Addendum No. 01  
 ID 1071-07-79  
 Revised Sheet 205  
 May 7, 2024

### Branch Panel: P2

Location: Space 11  
 Supply From: MDP  
 Mounting: Surface  
 Enclosure: Type 1

Volts: 120/208 Wye  
 Phases: 3  
 Wires: 4

A.I.C. Rating: 10 KAIC  
 Mains Type: MCB  
 Mains Rating: 200 A  
 MCB Rating: 200 A

Notes:

CKT	Circuit Description	Trip	Pole	A	B	C	Pole	Trip	Circuit Description	CKT
1	RCPT - GENERATOR	20 A	1	180	500		1	20 A	MECH/BLDG CONTROL PANEL	2
3	LIGHTING	20 A	1		270	1200	1	20 A	GEN ENGINE HEATER	4
5	RCPTS - EAST WALL/EXT.	20 A	1			540	1	20 A	GARAGE DOOR	6
7	GENERATOR BATTERY...	20 A	1	1200	540		1	20 A	RCPTS - NORTH WALL	8
9	EXHAUST FAN	15 A	2		250	540	1	20 A	RCPTS - SOUTH WALL	10
11						250	1	20 A	RCPTS - SW WALL/EXTERIOR	12
13	ELECTRIC WATER HEATER	20 A	3	1500	5000		3	60 A	ELECTRIC UNIT HEATER (EUH-1)	14
15	(EWH-1)				1500	5000				16
17						1500				18
19	ELECTRIC UNIT HEATER	60 A	3	5000	0		1	20 A	SPARE	20
21	(EUH-2)				5000	0	1	20 A	SPARE	22
23						5000	0	20 A	SPARE	24
25	BLANK			--			1	--	BLANK	26
27	SEWAGE EJECTOR PUMP	20 A	2		790	--	1	--	BLANK	28
29						790	1	--	BLANK	30
				<b>Total Load:</b>	13920 VA	14488 VA			14571 VA	
				<b>Total Amps:</b>	116 A	121 A			122 A	

Legend:

Addendum No. 01  
 ID 1071-07-79  
 Revised Sheet 208  
 May 7, 2024

## ELECTRICAL EQUIPMENT SCHEDULE

ITEM#	DESCRIPTION	POWER REQUIREMENTS			WIRE #SIZE, GND, MINIMUM CONDUIT	STARTER		DISCONNECT		NOTES	
		HP	VOLTS	POLES		FLA	VA	TYPE	BY		TYPE
CU-1	CONDENSING UNIT		208 V	3	16.0 A	5764 VA	(none)	(none)	NF	EC	
DR-1	ELECTRIC DRYER		208 V	2	0.0 A	5000 VA	(none)	(none)	(none)	(none)	
EF-1	EXHAUST FAN	1/6	208 V	2	0.0 A	500 VA	COMB	EC	NF	EC	INTERLOCK WITH COINO CONTROLS AND LOUVER
ERV-1R	ENERGY RECOVERY UNIT RETURN FAN		208 V	3	6.6 A	2378 VA	(none)	(none)	NF	EC	
ERV-1S	ENERGY RECOVERY UNIT SUPPLY FAN		208 V	3	6.6 A	2378 VA	(none)	(none)	NF	EC	
ERV-1W	ENERGY RECOVERY UNIT ENERGY WHEEL		208 V	3	0.7 A	252 VA	(none)	(none)	NF	EC	
EUH-1	ELECTRIC UNIT HEATER		208 V	3	0.0 A	15000 VA	(none)	(none)	NF	ES	
EUH-2	ELECTRIC UNIT HEATER		208 V	3	0.0 A	15000 VA	(none)	(none)	NF	ES	
EWH-1	ELECTRIC WATER HEATER		208 V	3	0.0 A	4500 VA	(none)	(none)	NF	EC	
HPWH-1	WATER HEAT PUMP		208 V	3	53.0 A	19094 VA	(none)	(none)	NF	EC	
PGW-1	GEO PUMP	7-1/2	208 V	3	0.0 A	8646 VA	VFD	ES	NF	ES	INSTALL SUPPLIER PROVIDED VFD AND DISCONNECT. PROVIDE ALL TERMINATIONS/CONNECTIONS.
PGW-2	GEO PUMP	7-1/2	208 V	3	0.0 A	8646 VA	VFD	ES	NF	ES	INSTALL SUPPLIER PROVIDED VFD AND DISCONNECT. PROVIDE ALL TERMINATIONS/CONNECTIONS.
PHW-1	HOT WATER PUMP	1/2	208 V	2	0.0 A	1125 VA	(none)	(none)	NF	EC	
PHW-2	HOT WATER PUMP	1/2	208 V	2	0.0 A	1125 VA	(none)	(none)	NF	EC	
PHW-3	HOT WATER PUMP	1/6	120 V	1	0.0 A	528 VA	(none)	(none)	NF	EC	
PHW-4	HOT WATER PUMP	1/2	208 V	2	0.0 A	1125 VA	(none)	(none)	NF	EC	
PHW-5	HOT WATER PUMP	1/2	208 V	2	0.0 A	1125 VA	(none)	(none)	NF	EC	
SEP-1	SEWAGE EJECTOR PUMP	3/4	208 V	2	5.5 A	1580 VA	(none)	(none)	NF	EC	
WP-1	WELL PUMP	10	208 V	3	30.0 A	11096 VA	VFD	ES	NF	EC	
WP-2	WELL PUMP	10	208 V	3	30.0 A	11096 VA	VFD	ES	NF	EC	
WSP-1	WATER SOURCE HEAT PUMP	3	208 V	3	11.0 A	3962 VA	(none)	(none)	NF	WU	
WSP-2	WATER SOURCE HEAT PUMP	3	208 V	3	30.0 A	10807 VA	(none)	(none)	NF	WU	
WSP-3	WATER SOURCE HEAT PUMP	3	208 V	3	30.0 A	10807 VA	(none)	(none)	NF	WU	
WSP-4	WATER SOURCE HEAT PUMP	3	208 V	3	11.0 A	3962 VA	(none)	(none)	NF	WU	
WSP-5	WATER SOURCE HEAT PUMP	3	208 V	3	21.0 A	7565 VA	(none)	(none)	NF	WU	
WSP-6	WATER SOURCE HEAT PUMP	3	208 V	3	11.0 A	3962 VA	(none)	(none)	NF	WU	
WWHP-1	WATER TO WATER HEAT PUMP	3	208 V	3	21.0 A	7565 VA	(none)	(none)	NF	EC	

STARTER TYPE		STARTER BY		DISCONNECT TYPE		DISCONNECT BY	
COMB	COMBINATION STARTER	EC	ELECTRICAL CONTRACTOR	BO	BY OTHERS	EC	ELECTRICAL CONTRACTOR
ECM	ELECTRONICALLY CONTROLLED MOTOR	ES	EQUIPMENT SUPPLIER	F	FUSED DISCONNECT	ES	EQUIPMENT SUPPLIER
MAG	MAGNETIC STARTER	MC	MECHANICAL CONTRACTOR	NF	NON-FUSED DISCONNECT	MC	MECHANICAL CONTRACTOR
MAN	MANUAL STARTER	WU	WITH UNIT			WU	WITH UNIT
SS	SOFT STARTER						
VFD	VARIABLE FREQUENCY DRIVE						

Addendum No. 01  
ID 1071-07-79  
Revised Sheet 209  
May 7, 2024

**MOBILIZATIONS EROSION CONTROL**

628.1905	628.1910				
MOBILIZATIONS EROSION CONTROL (EACH)	MOBILIZATIONS EROSION CONTROL (EACH)				
PROJECT CATEGORY	LOCATION				
0010	PROJECT 1071-07-79	22		16	
<b>PROJECT 1071-07-79 TOTAL</b>		<b>22</b>		<b>16</b>	

**TREES**

632.0101.01	632.0101.02	632.0101.03	632.0101.04		
OCCIDENTALIS TRIACANTHOS	CHICAGOLAND SKYCOLE SKYLINE	QUERCUS ALBA	QUERCUS BICOLOR		
FRACKBERRY, HONEYLOCUST, 2.5" CAL, B&B (EACH)	WHITE OAK, 2.5" CAL, B&B (EACH)				
PROJECT CATEGORY	LOCATION	STATION	STATION		
1071-07-79	REST AREA PLAZA	1183+10 RB - 1192+70 RB		9	6
<b>PROJECT 1071-07-79 TOTAL</b>		<b>9</b>		<b>6</b>	<b>4</b>

Addendum No. 01  
ID 1071-07-79  
Revised Sheet 300  
May 7, 2024

**TEMPORARY PAVEMENT MARKING**

643.3170					
TEMPORARY MARKING LINE EPOXY 6-INCH (WHITE) (LF)					
PROJECT CATEGORY	LOCATION	STATION	STATION		
0010	IH 90	1209+51 WB - 1215+53 WB		610	
<b>PROJECT 1071-07-79 TOTAL</b>				<b>610</b>	

**PERMANENT SIGNING TYPE II**

SIGN #	SIGN CODE	SIGN SIZE	SIGN IN	SIGN W/WH REFLECTIVE	SIGN TYPE II SF	POSTS 12 FT EACH	WOOD 4X6-INCH 14 FT ON/SAME EACH	MOUNTED POSTS 14 FT EACH	SIGN POSTS	REMARKS
6-01	R55-64B	25	24X24	4.00	---	---	---	1	6-02	PET WALKING AREA LEFT ARROW END OF PARKING AREA
6-02	R55-51	25	18X18	2.25	---	---	---	---	6-01	NO OVERNIGHT CAMPING
6-03	R55-64BR	25	24X24	4.00	---	---	---	1	6-04	PET WALKING AREA RIGHT ARROW END OF PARKING AREA
6-04	R55-51	25	18X18	2.25	---	---	---	---	6-03	NO OVERNIGHT CAMPING
6-05	R55-64BR	25	24X24	4.00	---	---	---	1	---	PET WALKING AREA RIGHT ARROW END OF PARKING AREA
6-06	R55-64B	25	24X24	4.00	---	---	---	1	---	PET WALKING AREA LEFT ARROW END OF PARKING AREA
6-07	R55-64BR	25	24X24	4.00	---	---	---	1	---	PET WALKING AREA RIGHT ARROW END OF PARKING AREA
6-08	R55-64B	25	24X24	4.00	---	---	---	1	---	PET WALKING AREA LEFT ARROW END OF PARKING AREA
6-09	R7-8A	25	12X18	1.50	---	---	---	1	---	RESERVED PARKING HANDICAPPED, THIS SPACE
6-10	R7-8A	25	12X18	1.50	---	---	---	1	---	RESERVED PARKING HANDICAPPED, THIS SPACE
6-11	R7-8A	25	12X18	1.50	---	---	---	1	---	RESERVED PARKING HANDICAPPED, THIS SPACE
6-12	R55-64B	25	24X24	4.00	---	---	---	1	---	PET WALKING AREA LEFT ARROW END OF PARKING AREA
6-13	R7-8A	25	12X18	1.50	---	---	---	1	---	RESERVED PARKING HANDICAPPED, THIS SPACE
6-14	R55-64BR	25	24X24	4.00	---	---	---	1	---	PET WALKING AREA RIGHT ARROW END OF PARKING AREA
6-15	R55-64B	25	24X24	4.00	---	---	---	1	---	PET WALKING AREA LEFT ARROW END OF PARKING AREA
6-16	R55-64BR	25	24X24	4.00	---	---	---	1	---	PET WALKING AREA RIGHT ARROW END OF PARKING AREA
6-17	R55-64B	25	24X24	4.00	---	---	---	1	---	PET WALKING AREA LEFT ARROW END OF PARKING AREA
6-18	R55-65	25	24X24	4.00	---	---	---	1	6-19	PET WALKING AREA
6-19	R55-51	25	18X18	2.25	---	---	---	---	6-18	NO OVERNIGHT CAMPING
6-20	R55-65	25	24X24	4.00	---	---	---	1	6-21	PET WALKING AREA
6-21	R55-51	25	18X18	2.25	---	---	---	---	6-20	NO OVERNIGHT CAMPING
6-22	R55-65	25	24X24	4.00	---	---	---	1	6-23	PET WALKING AREA
6-23	R55-51	25	18X18	2.25	---	---	---	---	6-22	NO OVERNIGHT CAMPING
<b>PROJECT TOTALS:</b>					<b>73.25</b>	<b>4</b>	<b>4</b>	<b>14</b>		

SHRUBS

PROJECT	CATEGORY	LOCATION	STATION-STATION	632.0201.01	632.0201.02	632.0201.03	632.0201.04	632.0201.05	632.0201.06	632.0201.07	632.0201.08
MELANOCARPA VAR. ELATAGLOSSY BLACK CHOKEBERRY, 12" HT, CONT (EACH)											
DIERVILLA LONICERA DWARF BUSH HONESUCKLE, 12" HT, CONT (EACH)											
DASIPHORA FRUTICOSA BUSH CINQUEFOIL, 12" HT, CONT (EACH)											
CEANOTHUS AMERICANUS NEW JERSEY TEA, 12" HT, CONT (EACH)											
RIBES AMERICANUM AMERICAN BLACK CURRANT, 12" HT, CONT (EACH)											
SYMPHORICARPOS ALBUS COMMON SNOWBERRY, 12" HT, CONT (EACH)											
ANAPHALIS MARGARITACEA PEARLY EVERLASTING, DP 50, PLUG (EACH)											
ASCLEPIAS TUBEROSA BUTTERFLY MILKWEED, DP 50, PLUG (EACH)											
0010	REST AREA PLAZA	1183+10 RB - 1192+70 RB		12	18	3	9	14	24	28	74
<b>PROJECT 1071-07-79 TOTAL</b>				12	18	3	9	14	24	28	74

1071-07-79

SHRUBS (CONT'D.)

PROJECT	CATEGORY	LOCATION	STATION-STATION	632.0201.09	632.0201.10	632.0201.11	632.0201.12	632.0201.13	632.0201.14	632.0201.15	632.0201.16	632.0201.17	632.0201.18	632.0201.19
ASCLEPIAS VERTICILLATA WHORLED MILKWEED, DP 50, PLUG (EACH)														
BOUTELOUA CURTIPENDULA SIDE OATS GRAMA GRASS, DP 50, PLUG (EACH)														
DALEA PURPUREA PURPLE PRAIRIE CLOVER, DP 50, PLUG (EACH)														
ECHINACEA ANGUSTIFOLIA WOODLAND CONEFLOWER, DP 50, PLUG (EACH)														
FRAGARIA VESCA WOODLAND STRAWBERRY, DP 50, PLUG (EACH)														
HEUCHERA RICHARDSONII PRAIRIE ALUM ROOT, DP 50, PLUG (EACH)														
MONARDA FISTULOSA BERGAMOT, DP 50, PLUG (EACH)														
SCHIZACHYRIUM SPOROBIOLUS SCOPARIUM LITTLE BLUESTEM, DP 50, PLUG (EACH)														
HETEROLEPIS PRAIRIE DROPSSEED ASTER, DP 50, PLUG (EACH)														
0010	REST AREA PLAZA	1183+10 RB - 1192+70 RB		72	48	31	48	50	86	92	41	31	39	38
<b>PROJECT 1071-07-79 TOTAL</b>				72	48	31	48	50	86	92	41	31	39	38

1071-07-79

PLANTING ITEMS

PROJECT	CATEGORY	LOCATION	STATION-STATION	UNIT
1071-07-79				
				SPV.0060.07SPV.0165.01
	PLANTING			
	CONTAINER			
	PAVING			
				(SF)
0010	REST AREA PLAZA	1183+10 RB - 1192+70 RB	4	773
<b>PROJECT 1071-07-79 TOTAL</b>				4
				773

PROJECT NO: 1071-07-79

HWY: IH 90

COUNTY: MONROE

MISCELLANEOUS QUANTITIES

SHEET

300A

E

FILE NAME:

PLOT DATE: 5/4/2024 2:01 PM

PLOT BY: KL ENGINEERING

PLOT NAME:

PLOT SCALE: 1"=1'

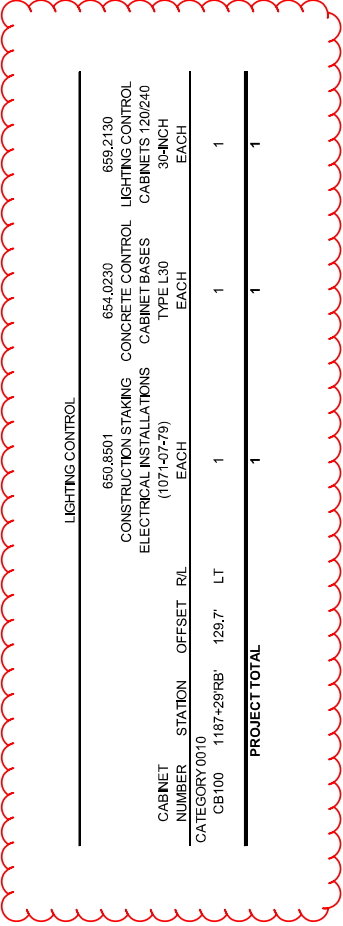
WISDOT/CADDSS SHEET 42

Addendum No. 01  
 ID 1071-07-79  
 Added Sheet 300A  
 May 7, 2024

Addendum No. 01  
ID 1071-07-79  
Revised Sheet 305  
May 7, 2024

LIGHTING CONTROL

CATEGORY 0010	NUMBER	STATION	OFFSET	R/L	CONCRETE BASKETS (1071-07-79)	CONCRETE BASKETS TYPE L30	CONCRETE BASKETS 30-INCH EACH	CONCRETE CONTROL CABINETS 120/240	CONCRETE CONTROL CABINETS 120/240
CB100	1187+29'RB'	129.7'	LT	1	1	1	1	1	1
<b>PROJECT TOTAL</b>					<b>1</b>	<b>1</b>	<b>1</b>	<b>1</b>	<b>1</b>



STREET LIGHTS

CATEGORY 0010	LIGHT NUMBER	STATION	OFFSET	R/L	CONCRETE BASES TYPE S
SL	105	1184+34'RB'	11.8'	LT	1
SL	106	1186+47'RB'	29.1'	LT	1
SL	107	1188+59'RB'	31.1'	LT	1
SL	108	1180+7'6'RA	30.5'	LT	1
<b>PROJECT TOTAL</b>					<b>4</b>

WALKWAY LIGHTING ITEMS

CATEGORY 0010	LIGHT UNIT	STATION	OFFSET	R/L	CONCRETE BASES TYPE 11	LIGHTING UNITS WALKWAY EACH	ELECTRICAL WIRE LIGHTING 12 AWG LF
WL 100	1186+91'RB'	163.3'	LT	1	1	1	72
WL 101	1187+65'RB'	171.5'	LT	1	1	1	72
WL 102	1188+37'RB'	182.0'	LT	1	1	1	72
WL 103	1189+02'RB'	173.1'	LT	1	1	1	72
WL 104	1189+48'RB'	153.2'	LT	1	1	1	72
WL 105	1190+12'RB'	151.2'	LT	1	1	1	72
WL 106	1190+34'RB'	105.8'	LT	1	1	1	72
WL 107	1191+17'RB'	96.3'	LT	1	1	1	72
WL 108	1188+79'RB'	132.3'	LT	1	1	1	72
WL 109	1189+55'RB'	115.6'	LT	1	1	1	72
WL 110	1188+79'RB'	87.8'	LT	1	1	1	72
WL 111	1190+15'RB'	55.7'	LT	1	1	1	72
WL 112	1189+59'RB'	54.0'	LT	1	1	1	72
WL 113	1189+02'RB'	42.6'	LT	1	1	1	72
WL 114	1188+37'RB'	34.6'	LT	1	1	1	72
WL 115	1187+86'RB'	42.9'	LT	1	1	1	72
WL 116	1187+30'RB'	54.3'	LT	1	1	1	72
WL 117	1186+78'RB'	112.1'	LT	1	1	1	72
WL 118	1185+69'RB'	92.0'	LT	1	1	1	72
WL 119	1184+65'RB'	72.3'	LT	1	1	1	72
<b>PROJECT TOTAL</b>					<b>20</b>	<b>20</b>	<b>1,440</b>



Proposal Schedule of Items

Proposal ID: 20240514002 Project(s): 1071-07-79

Federal ID(s): WISC 2024351

SECTION: 0001 Contract Items

Alt Set ID: Alt Mbr ID:

Proposal Line Number	Item ID Description	Approximate Quantity and Units	Unit Price	Bid Amount
0002	201.0205 Grubbing	10.000 STA	_____	_____
0004	203.0100 Removing Small Pipe Culverts	1.000 EACH	_____	_____
0006	204.0100 Removing Concrete Pavement	726.000 SY	_____	_____
0008	204.0170 Removing Fence	76.000 LF	_____	_____
0010	204.0265 Abandoning Wells	1.000 EACH	_____	_____
0012	205.0100 Excavation Common	2,961.000 CY	_____	_____
0014	208.0100 Borrow	10,324.000 CY	_____	_____
0016	213.0100 Finishing Roadway (project) 01. 1071-07-79	1.000 EACH	_____	_____
0018	305.0110 Base Aggregate Dense 3/4-Inch	1,080.000 TON	_____	_____
0020	305.0120 Base Aggregate Dense 1 1/4-Inch	290.000 TON	_____	_____
0022	312.0110 Select Crushed Material	182.000 TON	_____	_____
0024	522.1015 Apron Endwalls for Culvert Pipe Reinforced Concrete 15-Inch	1.000 EACH	_____	_____
0026	531.2036 Drilling Shaft 36-Inch	10.000 LF	_____	_____
0028	531.4050 Foundation Camera Pole 50-FT	1.000 EACH	_____	_____
0030	601.0115 Concrete Curb Type G	160.000 LF	_____	_____





Proposal Schedule of Items

Proposal ID: 20240514002 Project(s): 1071-07-79

Federal ID(s): WISC 2024351

SECTION: 0001 Contract Items

Alt Set ID: Alt Mbr ID:

Proposal Line Number	Item ID Description	Approximate Quantity and Units	Unit Price	Bid Amount
0032	602.0415 Concrete Sidewalk 6-Inch	31,000.000 SF	_____.	_____.
0034	602.0505 Curb Ramp Detectable Warning Field Yellow	52.000 SF	_____.	_____.
0036	602.0815 Concrete Driveway 7-Inch	770.000 SY	_____.	_____.
0038	606.0200 Riprap Medium	7.000 CY	_____.	_____.
0040	608.0315 Storm Sewer Pipe Reinforced Concrete Class III 15-Inch	162.000 LF	_____.	_____.
0042	611.0645 Inlet Covers Type MS-A	2.000 EACH	_____.	_____.
0044	611.3901 Inlets Median 1 Gate	2.000 EACH	_____.	_____.
0046	615.1000 Wisconsin Historical Marker	1.000 EACH	_____.	_____.
0048	616.0206 Fence Chain Link 6-FT	220.000 LF	_____.	_____.
0050	616.0329 Gates Chain Link (width) 01. 6-FT	2.000 EACH	_____.	_____.
0052	616.0329 Gates Chain Link (width) 02. 4-FT	2.000 EACH	_____.	_____.
0054	616.0700.S Fence Safety	1,000.000 LF	_____.	_____.
0056	618.0100 Maintenance and Repair of Haul Roads (project) 01. 1071-07-79	1.000 EACH	_____.	_____.
0058	619.1000 Mobilization	1.000 EACH	_____.	_____.
0060	623.0200 Dust Control Surface Treatment	5,300.000 SY	_____.	_____.



Proposal Schedule of Items

Proposal ID: 20240514002 Project(s): 1071-07-79

Federal ID(s): WISC 2024351

SECTION: 0001 Contract Items

Alt Set ID: Alt Mbr ID:

Proposal Line Number	Item ID Description	Approximate Quantity and Units	Unit Price	Bid Amount
0062	624.0100 Water	24.000 MGAL	_____	_____
0064	625.0100 Topsoil	500.000 SY	_____	_____
0066	625.0500 Salvaged Topsoil	10,200.000 SY	_____	_____
0068	627.0200 Mulching	8,100.000 SY	_____	_____
0070	628.1104 Erosion Bales	60.000 EACH	_____	_____
0072	628.1530.S Silt Fence Heavy Duty	3,000.000 LF	_____	_____
0074	628.1535.S Silt Fence Heavy Duty Maintenance	9,000.000 LF	_____	_____
0076	628.1905 Mobilizations Erosion Control	22.000 EACH	_____	_____
0078	628.1910 Mobilizations Emergency Erosion Control	16.000 EACH	_____	_____
0080	628.7005 Inlet Protection Type A	3.000 EACH	_____	_____
0082	628.7020 Inlet Protection Type D	3.000 EACH	_____	_____
0084	628.7560 Tracking Pads	2.000 EACH	_____	_____
0086	629.0210 Fertilizer Type B	7.000 CWT	_____	_____
0088	630.0140 Seeding Mixture No. 40	150.000 LB	_____	_____
0090	630.0200 Seeding Temporary	220.000 LB	_____	_____
0092	630.0500 Seed Water	190.000 MGAL	_____	_____



Proposal Schedule of Items

Proposal ID: 20240514002 Project(s): 1071-07-79

Federal ID(s): WISC 2024351

SECTION: 0001 Contract Items

Alt Set ID: Alt Mbr ID:

Proposal Line Number	Item ID Description	Approximate Quantity and Units	Unit Price	Bid Amount
0094	631.0300 Sod Water	80.000 MGAL	_____.	_____.
0096	631.1000 Sod Lawn	3,450.000 SY	_____.	_____.
0104	632.9101 Landscape Planting Surveillance and Care Cycles	24.000 EACH	_____.	_____.
0106	633.5200 Markers Culvert End	1.000 EACH	_____.	_____.
0108	634.0612 Posts Wood 4x6-Inch X 12-FT	4.000 EACH	_____.	_____.
0110	634.0614 Posts Wood 4x6-Inch X 14-FT	14.000 EACH	_____.	_____.
0112	637.2210 Signs Type II Reflective H	73.250 SF	_____.	_____.
0114	639.0108 Drill Hole in Earth 8-Inch	100.000 LF	_____.	_____.
0116	639.0112 Drill Hole in Earth 12-Inch	170.000 LF	_____.	_____.
0118	639.1008 Well Casing Pipe 8-Inch	182.000 LF	_____.	_____.
0120	639.1700 Well Screen	20.000 LF	_____.	_____.
0122	639.2100 Grout for Sealing Well Casing	54.000 CF	_____.	_____.
0124	639.4000 Test Pumping	2.000 EACH	_____.	_____.
0126	642.5401 Field Office Type D	1.000 EACH	_____.	_____.
0128	643.0300 Traffic Control Drums	18,500.000 DAY	_____.	_____.
0130	643.0420 Traffic Control Barricades Type III	1,450.000 DAY	_____.	_____.



Proposal Schedule of Items

Proposal ID: 20240514002 Project(s): 1071-07-79

Federal ID(s): WISC 2024351

SECTION: 0001 Contract Items

Alt Set ID: Alt Mbr ID:

Proposal Line Number	Item ID Description	Approximate Quantity and Units	Unit Price	Bid Amount
0132	643.0705 Traffic Control Warning Lights Type A	2,850.000 DAY	_____.	_____.
0134	643.0900 Traffic Control Signs	3,540.000 DAY	_____.	_____.
0136	643.0910 Traffic Control Covering Signs Type I	2.000 EACH	_____.	_____.
0138	643.0920 Traffic Control Covering Signs Type II	2.000 EACH	_____.	_____.
0140	643.1050 Traffic Control Signs PCMS	7.000 DAY	_____.	_____.
0142	643.3170 Temporary Marking Line Epoxy 6-Inch	610.000 LF	_____.	_____.
0144	643.5000 Traffic Control	1.000 EACH	_____.	_____.
0146	645.0120 Geotextile Type HR	13.000 SY	_____.	_____.
0148	650.4000 Construction Staking Storm Sewer	3.000 EACH	_____.	_____.
0150	650.4500 Construction Staking Subgrade	1,110.000 LF	_____.	_____.
0152	650.5000 Construction Staking Base	300.000 LF	_____.	_____.
0154	650.5500 Construction Staking Curb Gutter and Curb & Gutter	160.000 LF	_____.	_____.
0156	650.7000 Construction Staking Concrete Pavement	820.000 LF	_____.	_____.
0158	650.8501 Construction Staking Electrical Installations (project) 01. 1071-07-79	1.000 EACH	_____.	_____.
0160	650.9000 Construction Staking Curb Ramps	4.000 EACH	_____.	_____.



Proposal Schedule of Items

Proposal ID: 20240514002 Project(s): 1071-07-79

Federal ID(s): WISC 2024351

SECTION: 0001 Contract Items

Alt Set ID: Alt Mbr ID:

Proposal Line Number	Item ID Description	Approximate Quantity and Units	Unit Price	Bid Amount
0162	650.9500 Construction Staking Sidewalk (project) 01. 1071-07-79	1.000 EACH	_____.	_____.
0164	650.9911 Construction Staking Supplemental Control (project) 01. 1071-07-79	1.000 EACH	_____.	_____.
0166	650.9920 Construction Staking Slope Stakes	1,110.000 LF	_____.	_____.
0168	652.0125 Conduit Rigid Metallic 2-Inch	30.000 LF	_____.	_____.
0170	652.0225 Conduit Rigid Nonmetallic Schedule 40 2-Inch	3,160.000 LF	_____.	_____.
0172	652.0235 Conduit Rigid Nonmetallic Schedule 40 3-Inch	215.000 LF	_____.	_____.
0174	653.0140 Pull Boxes Steel 24x42-Inch	6.000 EACH	_____.	_____.
0176	653.0164 Pull Boxes Non-Conductive 24x42-Inch	16.000 EACH	_____.	_____.
0178	654.0105 Concrete Bases Type 5	4.000 EACH	_____.	_____.
0180	654.0111 Concrete Bases Type 11	20.000 EACH	_____.	_____.
0182	654.0230 Concrete Control Cabinet Bases Type L30	1.000 EACH	_____.	_____.
0184	655.0610 Electrical Wire Lighting 12 AWG	1,440.000 LF	_____.	_____.
0186	655.0615 Electrical Wire Lighting 10 AWG	5,799.000 LF	_____.	_____.
0188	655.0625 Electrical Wire Lighting 6 AWG	450.000 LF	_____.	_____.



Proposal Schedule of Items

Proposal ID: 20240514002 Project(s): 1071-07-79

Federal ID(s): WISC 2024351

SECTION: 0001 Contract Items

Alt Set ID: Alt Mbr ID:

Proposal Line Number	Item ID Description	Approximate Quantity and Units	Unit Price	Bid Amount
0192	656.0501 Electrical Service Breaker Disconnect Box (location) 01. CCTV410190	1.000 EACH	_____	_____
0194	659.0700 Lighting Units Walkway	20.000 EACH	_____	_____
0196	659.2130 Lighting Control Cabinets 120/240 30-Inch	1.000 EACH	_____	_____
0198	670.0101 Field System Integrator	1.000 EACH	_____	_____
0200	670.0201 ITS Documentation	1.000 EACH	_____	_____
0202	671.0112 Conduit HDPE 1-Duct 2-Inch	585.000 LF	_____	_____
0204	671.0122 Conduit HDPE 2-Duct 2-Inch	480.000 LF	_____	_____
0206	673.1225.S Install Pole Mounted Cabinet	1.000 EACH	_____	_____
0208	677.0150 Install Camera Pole 50-FT	1.000 EACH	_____	_____
0210	677.0200 Install Camera Assembly	1.000 EACH	_____	_____
0212	678.0600 Install Ethernet Switches	1.000 EACH	_____	_____
0214	690.0250 Sawing Concrete	140.000 LF	_____	_____
0216	715.0720 Incentive Compressive Strength Concrete Pavement	500.000 DOL	1.00000	500.00
0218	ASP.1T0A On-the-Job Training Apprentice at \$5.00/HR	2,500.000 HRS	5.00000	12,500.00
0220	ASP.1T0G On-the-Job Training Graduate at \$5.00/HR	3,520.000 HRS	5.00000	17,600.00



Proposal Schedule of Items

Proposal ID: 20240514002 Project(s): 1071-07-79

Federal ID(s): WISC 2024351

SECTION: 0001 Contract Items

Alt Set ID: Alt Mbr ID:

Proposal Line Number	Item ID Description	Approximate Quantity and Units	Unit Price	Bid Amount
0222	SPV.0060 Special 01. Bench	13.000 EACH	_____.	_____.
0224	SPV.0060 Special 02. Litter Receptacle	33.000 EACH	_____.	_____.
0226	SPV.0060 Special 03. Recycling Receptacle	33.000 EACH	_____.	_____.
0228	SPV.0060 Special 04. Picnic Table	12.000 EACH	_____.	_____.
0230	SPV.0060 Special 05. ADA Picnic Table	4.000 EACH	_____.	_____.
0232	SPV.0060 Special 06. Flag Pole	3.000 EACH	_____.	_____.
0234	SPV.0060 Special 07. Planting Container	4.000 EACH	_____.	_____.
0236	SPV.0060 Special 08. Picnic Shelter	4.000 EACH	_____.	_____.
0238	SPV.0060 Special 09. Install Cellular Modem	1.000 EACH	_____.	_____.
0240	SPV.0060 Special 10. Ground Rod	1.000 EACH	_____.	_____.
0242	SPV.0060 Special 11. Rest Area Building General	1.000 EACH	_____.	_____.
0244	SPV.0060 Special 12. Rest Area Building Plumbing	1.000 EACH	_____.	_____.
0246	SPV.0060 Special 13. Rest Area Building HVAC	1.000 EACH	_____.	_____.
0248	SPV.0060 Special 14. Rest Area Building Electrical	1.000 EACH	_____.	_____.
0250	SPV.0060 Special 15. Maintenance Building General	1.000 EACH	_____.	_____.



Proposal Schedule of Items

Proposal ID: 20240514002 Project(s): 1071-07-79

Federal ID(s): WISC 2024351

SECTION: 0001 Contract Items

Alt Set ID: Alt Mbr ID:

Proposal Line Number	Item ID Description	Approximate Quantity and Units	Unit Price	Bid Amount
0252	SPV.0060 Special 16. Maintenance Building Plumbing	1.000 EACH	_____.	_____.
0254	SPV.0060 Special 17. Maintenance Building HVAC	1.000 EACH	_____.	_____.
0256	SPV.0060 Special 18. Maintenance Building Electrical	1.000 EACH	_____.	_____.
0258	SPV.0060 Special 19. Electrical Service, Sparta Rest Area	1.000 EACH	_____.	_____.
0260	SPV.0060 Special 20. Sewage Ejector Pump and Controls	1.000 EACH	_____.	_____.
0262	SPV.0060 Special 21. Pitless Adapter	2.000 EACH	_____.	_____.
0264	SPV.0060 Special 22. Well Pump	2.000 EACH	_____.	_____.
0266	SPV.0060 Special 23. Sanitary Sewer Manhole 4-ft	3.000 EACH	_____.	_____.
0268	SPV.0060 Special 24. Coring Manhole	1.000 EACH	_____.	_____.
0270	SPV.0060 Special 25. Well System Controls	1.000 EACH	_____.	_____.
0272	SPV.0060 Special 26. Adjusting Manhole Covers with Rubber Rings	1.000 EACH	_____.	_____.
0274	SPV.0060 Special 27. Bollard	7.000 EACH	_____.	_____.
0276	SPV.0090 Special 01. Split Rail Fence	260.000 LF	_____.	_____.
0278	SPV.0090 Special 02. Pipe Underdrain (8-Inch) with Geotextile Fabric and Aggregate	440.000 LF	_____.	_____.





Proposal Schedule of Items

Proposal ID: 20240514002 Project(s): 1071-07-79

Federal ID(s): WISC 2024351

SECTION: 0001 Contract Items

Alt Set ID: Alt Mbr ID:

Proposal Line Number	Item ID Description	Approximate Quantity and Units	Unit Price	Bid Amount
0280	SPV.0090 Special 03. Forcemain PVC, 2-Inch	334.000 LF	_____.	_____.
0282	SPV.0090 Special 04. Sanitary Sewer PVC 4-Inch	42.000 LF	_____.	_____.
0284	SPV.0090 Special 05. Sanitary Sewer PVC 8-Inch	539.000 LF	_____.	_____.
0286	SPV.0090 Special 06. Underground Copper Water Line 1-Inch	390.000 LF	_____.	_____.
0288	SPV.0090 Special 07. Underground Copper Water Line 3-Inch	595.000 LF	_____.	_____.
0290	SPV.0090 Special 08. Construction Staking Sanitary Sewer System	915.000 LF	_____.	_____.
0292	SPV.0165 Special 01. Unit Paving	773.000 SF	_____.	_____.
0294	632.0101 Trees (species, root, size) 01. Celtis Occidentalis 'Chicagoland' Chicagoland Hackberry, 2.5" Cal, B&B	9.000 EACH	_____.	_____.
0296	632.0101 Trees (species, root, size) 02. Gleditsia Triacanthos Inermis 'Skycole' Skyline Honey Locust, 2.5" Cal, B&B	6.000 EACH	_____.	_____.
0298	632.0101 Trees (species, root, size) 03. Quercus Alba White Oak, 2.5" Cal, B&B	6.000 EACH	_____.	_____.
0300	632.0101 Trees (species, root, size) 04. Quercus Bicolor Swamp White Oak, 2.5" Cal, B&B	4.000 EACH	_____.	_____.
0302	632.0201 Shrubs (species, root, size) 01. Aronia Melanocarpa Var. Elataglossy Black Chokeberry, 12" Height, Cont.	12.000 EACH	_____.	_____.



Proposal Schedule of Items

Proposal ID: 20240514002 Project(s): 1071-07-79

Federal ID(s): WISC 2024351

SECTION: 0001 Contract Items

Alt Set ID: Alt Mbr ID:

Proposal Line Number	Item ID Description	Approximate Quantity and Units	Unit Price	Bid Amount
0304	632.0201 Shrubs (species, root, size) 02. Ceanothus Americanus New Jersey Tea, 12" Height, Cont.	18.000 EACH	_____.	_____.
0306	632.0201 Shrubs (species, root, size) 03. Dasiphora Fruticosa Bush Cinquefoil, 12" Height, Cont.	3.000 EACH	_____.	_____.
0308	632.0201 Shrubs (species, root, size) 04. Diervilla Lonicera Dwarf Bush Honeysuckle, 12" Height, Cont.	9.000 EACH	_____.	_____.
0310	632.0201 Shrubs (species, root, size) 05. Ribes Americanum American Black Currant, 12" Height, Cont.	14.000 EACH	_____.	_____.
0312	632.0201 Shrubs (species, root, size) 06. Symphoricarpos Albus Common Snowberry, 12" Height, Cont.	24.000 EACH	_____.	_____.
0314	632.0201 Shrubs (species, root, size) 07. Anaphalis Margaritacea Pearly Everlasting, DP 50, Plug	28.000 EACH	_____.	_____.
0316	632.0201 Shrubs (species, root, size) 08. Asclepias Tuberosa Butterfly Milkweed, DP 50, Plug	74.000 EACH	_____.	_____.
0318	632.0201 Shrubs (species, root, size) 09. Asclepias Verticillata Whorled Milkweed, DP 50, Plug	72.000 EACH	_____.	_____.
0320	632.0201 Shrubs (species, root, size) 10. Bouteloua Curtipendula Side Oats Grama, DP 50, Plug	48.000 EACH	_____.	_____.
0322	632.0201 Shrubs (species, root, size) 11. Bouteloua Gracilis Blue Grama Grass, DP 50, Plug	31.000 EACH	_____.	_____.



Proposal Schedule of Items

Proposal ID: 20240514002 Project(s): 1071-07-79

Federal ID(s): WISC 2024351

SECTION: 0001 Contract Items

Alt Set ID: Alt Mbr ID:

Proposal Line Number	Item ID Description	Approximate Quantity and Units	Unit Price	Bid Amount
0324	632.0201 Shrubs (species, root, size) 12. Dalea Purpurea Purple Prairie Clover, DP 50, Plug	48.000 EACH	_____.	_____.
0326	632.0201 Shrubs (species, root, size) 13. Echinacea Angustifolia Narrow Leaf Coneflower, DP 50, Plug	50.000 EACH	_____.	_____.
0328	632.0201 Shrubs (species, root, size) 14. Fragaria Vesca Woodland Strawberry, DP 50, Plug	86.000 EACH	_____.	_____.
0330	632.0201 Shrubs (species, root, size) 15. Heuchera Richardsonii Prairie Alum Root, DP 50, Plug	92.000 EACH	_____.	_____.
0332	632.0201 Shrubs (species, root, size) 16. Monarda Fistulosa Bergamot, DP 50, Plug	41.000 EACH	_____.	_____.
0334	632.0201 Shrubs (species, root, size) 17. Schizachyrium Scoparium Little Bluestem, DP 50, Plug	31.000 EACH	_____.	_____.
0336	632.0201 Shrubs (species, root, size) 18. Sporobolus Heterolepis Prairie Dropseed, DP 50, Plug	39.000 EACH	_____.	_____.
0338	632.0201 Shrubs (species, root, size) 19. Symphyotrichum Sericeum Silky Aster, DP 50, Plug	38.000 EACH	_____.	_____.
<b>Section: 0001</b>			<b>Total:</b>	_____.
			<b>Total Bid:</b>	_____.

